

Frank & Orchestra Sinatra - Yes Sir That`s My Baby

♩ = 176,004700

DRUMS

MELODY

ACOU BASS

CELESTA

♩ = 176,004700

STRINGS

A.PIANO

Detailed description: This system contains the first four measures of the piece. The tempo is marked as 176,004700. The drums play a steady eighth-note pattern starting in the third measure. The melody is in 4/4 time, starting with a whole rest in the first two measures, followed by quarter notes in the third and fourth measures. The acoustic bass line follows the melody. The celesta plays a simple eighth-note accompaniment. The strings are silent. The piano accompaniment consists of chords in the right hand.

5

DRUMS

MELODY

ACOU BASS

CELESTA

A.PIANO

Detailed description: This system contains measures 5 through 8. The drums continue their eighth-note pattern. The melody has a whole rest in measure 5, followed by quarter notes in measures 6 and 7, and a half note in measure 8. The acoustic bass line continues. The celesta plays eighth notes in measures 5 and 6, then rests. The piano accompaniment continues with chords.

8

DRUMS

MELODY

ACOU BASS

A.PIANO

11

DRUMS

MELODY

ACOU BASS

A.PIANO

14

DRUMS

MELODY

ACOU BASS

A.PIANO

17

DRUMS

MELODY

ACOU BASS

A.PIANO

20

DRUMS

MELODY

ACOU BASS

CELESTA

A.PIANO

23

DRUMS

MELODY

ACOU BASS

CELESTA

STRINGS

A.PIANO

Detailed description: This system of musical notation covers measures 23, 24, and 25. The DRUMS part features a consistent pattern of eighth notes with 'x' marks above them, indicating cymbal or snare hits. The MELODY part is written in treble clef with a key signature of two flats (B-flat and E-flat). It begins with a half note G3, followed by a half note A3, and then a half note B-flat3. In measure 24, it moves to a half note C4, then a half note D4, and a half note E4. In measure 25, it plays a half note F4, then a half note G4, and a half note A4. The ACOU BASS part is in bass clef, starting with a half note G2, then a half note A2, and a half note B2. In measure 24, it plays a half note C3, then a half note D3, and a half note E3. In measure 25, it plays a half note F3, then a half note G3, and a half note A3. The CELESTA part is in treble clef, starting with a half note G3, then a half note A3, and a half note B-flat3. In measure 24, it plays a half note C4, then a half note D4, and a half note E4. In measure 25, it plays a half note F4, then a half note G4, and a half note A4. The STRINGS part is in bass clef, starting with a half note G2, then a half note A2, and a half note B2. In measure 24, it plays a half note C3, then a half note D3, and a half note E3. In measure 25, it plays a half note F3, then a half note G3, and a half note A3. The A.PIANO part is in treble clef, starting with a half note G3, then a half note A3, and a half note B-flat3. In measure 24, it plays a half note C4, then a half note D4, and a half note E4. In measure 25, it plays a half note F4, then a half note G4, and a half note A4.

26

DRUMS

MELODY

ACOU BASS

CELESTA

STRINGS

A.PIANO

Detailed description: This system of musical notation covers measures 26, 27, and 28. The DRUMS part continues with eighth notes and 'x' marks. The MELODY part is in treble clef, starting with a half note B-flat3, then a half note C4, and a half note D4. In measure 27, it plays a half note E4, then a half note F4, and a half note G4. In measure 28, it plays a half note A4, then a half note B4, and a half note C5. The ACOU BASS part is in bass clef, starting with a half note G2, then a half note A2, and a half note B2. In measure 27, it plays a half note C3, then a half note D3, and a half note E3. In measure 28, it plays a half note F3, then a half note G3, and a half note A3. The CELESTA part is in treble clef, starting with a half note B-flat3, then a half note C4, and a half note D4. In measure 27, it plays a half note E4, then a half note F4, and a half note G4. In measure 28, it plays a half note A4, then a half note B4, and a half note C5. The STRINGS part is in bass clef, starting with a half note G2, then a half note A2, and a half note B2. In measure 27, it plays a half note C3, then a half note D3, and a half note E3. In measure 28, it plays a half note F3, then a half note G3, and a half note A3. The A.PIANO part is in treble clef, starting with a half note G3, then a half note A3, and a half note B-flat3. In measure 27, it plays a half note C4, then a half note D4, and a half note E4. In measure 28, it plays a half note F4, then a half note G4, and a half note A4.

29

DRUMS

MELODY

ACOU BASS

CELESTA

STRINGS

A.PIANO

32

DRUMS

MELODY

ACOU BASS

CELESTA

A.PIANO

35

DRUMS

MELODY

ACOU BASS

CELESTA

A.PIANO

38

DRUMS

MELODY

ACOU BASS

CELESTA

A.PIANO

41

DRUMS

MELODY

ACOU BASS

CELESTA

A.PIANO

44

DRUMS

MELODY

ACOU BASS

CELESTA

A.PIANO

47

DRUMS

MELODY

ACOU BASS

CELESTA

A.PIANO

50

DRUMS

MELODY

ACOU BASS

CELESTA

A.PIANO



53

DRUMS

MELODY

ACOU BASS

CELESTA

A.PIANO

56

DRUMS

MELODY

ACOU BASS

CELESTA

A.PIANO

59

DRUMS

MELODY

ACOUBASS

CELESTA

A.PIANO

62

DRUMS

MELODY

ACOUBASS

CELESTA

A.PIANO

65

DRUMS

MELODY

ACOU BASS

CELESTA

A.PIANO

68

DRUMS

MELODY

ACOU BASS

CELESTA

A.PIANO

70

DRUMS

MELODY

ACOU BASS

CELESTA

A.PIANO

The image displays a musical score for measures 70, 71, and 72. The score is organized into five staves, each with a label on the left: DRUMS, MELODY, ACOU BASS, CELESTA, and A.PIANO. Measure 70 begins with a drum pattern consisting of four eighth notes with 'x' marks above them, followed by a quarter note. The MELODY staff features a sequence of four quarter notes, followed by a half note and a whole note. The ACOU BASS staff has a quarter note, a half note, and a whole note. The CELESTA staff contains a sequence of quarter notes, followed by a half note and a whole note. The A.PIANO staff shows four chords, each represented by a vertical line with a dot, followed by a whole note chord. Measures 71 and 72 show rests for all parts.

DRUMS

Frank & Orchestra Sinatra - Yes Sir That`s My Baby

♩ = 176,004700

4/4

Drum notation for measures 1-4. The first two measures are rests. The third measure contains a bass drum (D) and snare drum (S) pattern. The fourth measure contains a snare drum (S) and bass drum (D) pattern.

6

Drum notation for measures 5-8. Each measure contains a bass drum (D) and snare drum (S) pattern.

10

Drum notation for measures 9-12. Each measure contains a bass drum (D) and snare drum (S) pattern.

14

Drum notation for measures 13-16. Each measure contains a bass drum (D) and snare drum (S) pattern.

18

Drum notation for measures 17-20. Each measure contains a bass drum (D) and snare drum (S) pattern.

22

Drum notation for measures 21-24. Each measure contains a bass drum (D) and snare drum (S) pattern.

25

Drum notation for measures 25-27. Each measure contains a bass drum (D) and snare drum (S) pattern.

28

Drum notation for measures 28-30. Each measure contains a bass drum (D) and snare drum (S) pattern.

31

Drum notation for measures 31-34. Each measure contains a bass drum (D) and snare drum (S) pattern.

35

Drum notation for measures 35-38. Each measure contains a bass drum (D) and snare drum (S) pattern.

V.S.

## DRUMS

39

39

43

43

47

47

51

51

55

55

59

59

63

63

67

67

69

69

MELODY

Frank & Orchestra Sinatra - Yes Sir That`s My Baby

♩ = 176,004700

1

8

14

20

27

34

40

46

52

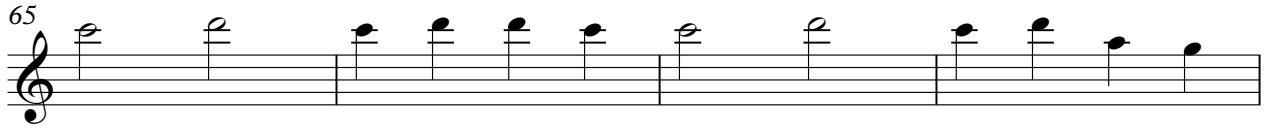
59

V.S.

2

# MELODY

65



A musical staff in treble clef containing eight measures of music. The notes are: G4 (quarter), A4 (quarter), B4 (quarter), C5 (quarter), B4 (quarter), A4 (quarter), G4 (quarter), F4 (quarter), E4 (quarter), D4 (quarter), C4 (quarter), B3 (quarter).

69



A musical staff in treble clef containing four measures of music. The notes are: G4 (quarter), A4 (quarter), B4 (quarter), C5 (quarter), B4 (quarter), A4 (quarter), G4 (quarter), F4 (quarter), E4 (quarter), D4 (quarter), C4 (quarter), B3 (quarter).



ACOU BASS

Frank & Orchestra Sinatra - Yes Sir That`s My Baby

♩ = 176,004700



V.S.

2

ACOU BASS

61



67



CELESTA

Frank & Orchestra Sinatra - Yes Sir That`s My Baby

♩ = 176,004700

16

22

29

36

41

46

52

59

64

V.S.

2

# CELESTA

68



STRINGS

Frank & Orchestra Sinatra - Yes Sir That`s My Baby

♩ = 176,004700

**21**

Musical notation for strings, measures 21-26. Measure 21 is a whole rest. Measures 22-26 contain a melodic line with eighth notes and slurs.

**27**

Musical notation for strings, measures 27-42. Measures 27-31 contain a melodic line with eighth notes and slurs. Measure 42 is a whole rest.

A.PIANO

Frank & Orchestra Sinatra - Yes Sir That`s My Baby

♩ = 176,004700

7

12

17

22

27

33

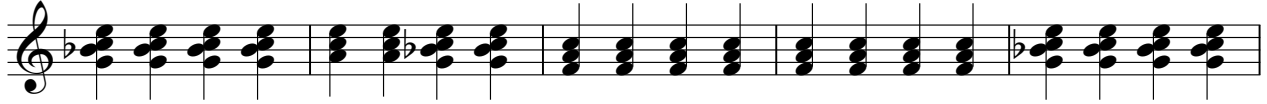
38

43

48

V.S.

53



58



63



68

