



18

Harm.

Cab.

J. Gtr.

22

Harm.

Cab.

J. Gtr.

26

Harm.

Cab.

J. Gtr.

E. Bass

30

Harm.

Cab.

J. Gtr.

E. Bass

35

Harm. 

Cab. 

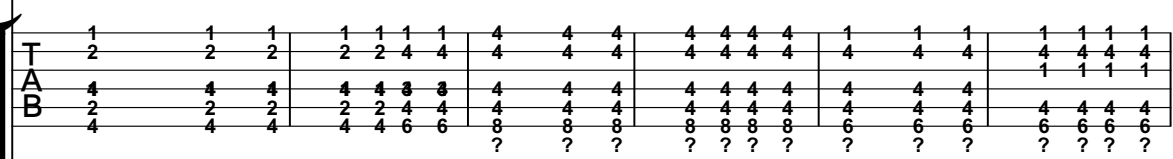
J. Gtr. 


E. Bass 

40

Harm. 

Cab. 

J. Gtr. 

E. Bass 

46

Harm. 

Cab. 

J. Gtr. 

E. Bass 

51

Harm.

Cab.

J. Gtr.

E. Bass

56

Harm.

Cab.

J. Gtr.

E. Bass

61

Harm.

Cab.

J. Gtr.

E. Bass

65

Harm.

Cab.

J. Gtr.

E. Bass

71

Harm.

Cab.

J. Gtr.

E. Bass

77

Harm.

Cab.

J. Gtr.

E. Bass

81

Harm.

J. Gtr.

87

Harm.

J. Gtr.

T	4 4 4 1	1 1 1	1 1 1	4	4	4	4	4	1 1 4	6	6	6
A	4 4 4 4	1 1 1	1 1	4	4	4	4	4	4 1 1	4	4	4
B	4 4 4 4	4 4 4	4 4 4	4	6	6	6	4	4 4 4	6	6	6

93

Harm.

Cab.

J. Gtr.

T	1 1 1	1	4	4	4	4	4	4	4	4	4	1 1 1	1	1	1
A	4 4 3	3	4	4	4	4	4	4	4	4	4	1 1 1	1	1	1
B	2 2 4	4	4	4	4	4	4	4	4	4	4	4 4 4	4	4	4
	4 4 6	6	8	8	8	8	8	8	6	6	6	6 6 6	8	8	8
			?	?	?	?	?	?	?	?	?	?	?	?	?

E. Bass

99

Harm.

Cab.

J. Gtr.

T	1 1 1 1	1	1	1	1 1 1 1	4	4	4	4	4	4	4	4	4	1	1	1
A	4 4 4 4	2	2	2	2 2 4 4	4	4	4	4	4	4	4	4	4	4	4	4
B	4 4 4 4	4	4	4	4 4 3 3	4	4	4	4	4	4	4	4	4	4	4	4
	8 8 8 8	4	4	4	4 4 6 6	8	8	8	8	8	8	8	8	8	6	6	6
	?	?	?	?	?	?	?	?	?	?	?	?	?	?	?	?	?

E. Bass

105

Harm.

Cab.

J. Gtr.

T	1 1 1 1	1	1	1	1 1 1 1	1	1	1	1	1 1 1 1	1	1	1	1	1	1	1
A	1 1 1 1	1	4	4	4	4	4	4	4	4 4 4 4	4	4	4	4	4 4 3 3	3	3
B	4 4 4 4	4	4	4	4	4	4	4	4	2	2	2	2	2 2 4 4	4	4	4
	6 6 6 6	6	8	8	8	8	8	8	8	4	4	4	4	4 4 6 6	6	6	6
	?	?	?	?	?	?	?	?	?	?	?	?	?	?	?	?	?

E. Bass

110

Harm.

Cab.

J. Gtr.

E. Bass

114

Harm.

Cab.

J. Gtr.

E. Bass

119

Harm.

Cab.

J. Gtr.





# Harmonica

♩ = 93,999985

8

12

17

22

28

33

40

48

53

58

3

6

Detailed description: This musical score is for a harmonica piece in 4/4 time. It begins with a tempo marking of ♩ = 93,999985. The score is divided into ten systems of music, each starting with a measure number. The first system (measures 1-8) starts with a whole rest, followed by a half rest, and then a series of eighth notes. The second system (measures 9-16) features a triplet of eighth notes. The third system (measures 17-21) includes two triplet markings. The fourth system (measures 22-27) continues with eighth notes and rests. The fifth system (measures 28-32) has a triplet marking. The sixth system (measures 33-39) includes a triplet marking. The seventh system (measures 40-47) continues with eighth notes. The eighth system (measures 48-52) features eighth notes and rests. The ninth system (measures 53-57) continues with eighth notes. The tenth system (measures 58-61) includes a triplet and a sextuplet marking.

64

72

79

83

91

101

109

114

120

125

The image displays a musical score for a harmonica, consisting of ten staves of music. The score is written in a single treble clef with a key signature of one flat (B-flat). The measures are numbered from 64 to 125. The notation includes various rhythmic values such as eighth, sixteenth, and quarter notes, as well as rests. Several measures contain triplet markings (indicated by a '3' above a bracket) and a quadruplet marking (indicated by a '4' above a bracket). The music concludes with a double bar line at measure 125.

# Cabasa

♩ = 93,999985

10

20

30

40

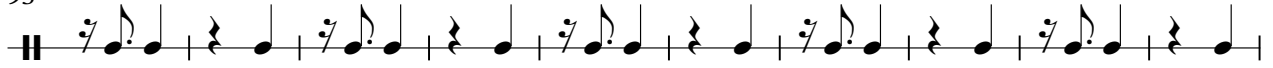
50

60

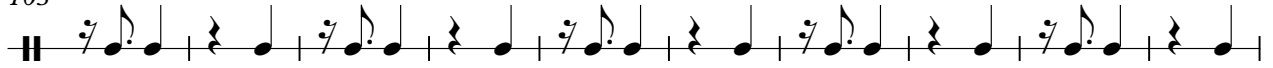
70

**15**

93



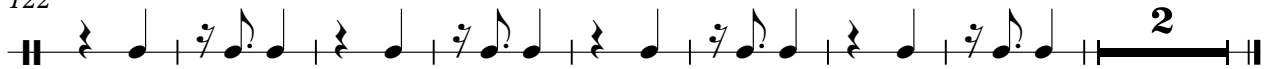
103



113



122







# Electric Bass

♩ = 93,999985

24



30



37



45



53



60



66



73

15



93



100



108



116



127

