

U2 - Sweetest Thing

♩ = 72,000031

Staff-4

Staff-1

Staff-3

Right Hand

Left Hand

Staff-2

3

Staff-4

Staff-1

Staff-3

Right Hand

Left Hand

Staff-2

All Rights Reserved

Staff-4

Staff-1

Staff-3

Right Hand

Left Hand

Staff-2

Detailed description of measure 5: This system contains six staves. Staff-4 (bass clef) has a whole rest followed by a half note chord. Staff-1 (bass clef) has a half note chord, followed by quarter notes, and a half note chord. Staff-3 (bass clef) has a whole rest followed by quarter notes. Right Hand (treble clef) has a whole rest followed by quarter notes. Left Hand (treble clef) has quarter notes. Staff-2 (bass clef) has quarter notes, a half note chord, and quarter notes.

Staff-4

Staff-1

Staff-3

Right Hand

Left Hand

Staff-2

Detailed description of measure 6: This system contains six staves. Staff-4 (bass clef) has a whole rest followed by a half note chord. Staff-1 (bass clef) has a half note chord, followed by quarter notes, and a half note chord. Staff-3 (bass clef) has a whole rest followed by quarter notes. Right Hand (treble clef) has a whole rest followed by quarter notes. Left Hand (treble clef) has quarter notes. Staff-2 (bass clef) has quarter notes, a half note chord, and quarter notes.

7

Staff-4

Staff-1

Staff-3

Right Hand

Left Hand

Staff-2

8

Staff-4

Staff-1

Staff-3

Right Hand

Left Hand

Staff-2

Staff-4

Staff-1

Staff-3

Right Hand

Left Hand

Staff-2

Staff-4

Staff-1

Staff-3

Right Hand

Left Hand

Staff-2

11

Staff-4

Staff-1

Staff-3

Right Hand

Left Hand

Staff-2

Detailed description of measure 11: This system contains six staves. Staff-4 (bass clef) has a whole rest followed by a half note chord. Staff-1 (bass clef) has a half note chord, followed by a quarter note, an eighth note, and a quarter note. Staff-3 (bass clef) has a half note chord, followed by a quarter note, an eighth note, and a quarter note. The Right Hand (treble clef) has a half note chord, followed by a quarter note, an eighth note, and a quarter note. The Left Hand (treble clef) has a half note chord, followed by a quarter note, an eighth note, and a quarter note. Staff-2 (bass clef) has a half note chord, followed by a quarter note, an eighth note, and a quarter note. The bottom part of Staff-2 shows a guitar fretboard diagram with a barre on the first fret and various notes.

12

Staff-4

Staff-1

Staff-3

Right Hand

Left Hand

Staff-2

Detailed description of measure 12: This system contains six staves. Staff-4 (bass clef) has a whole rest followed by a half note chord. Staff-1 (bass clef) has a half note chord, followed by a quarter note, an eighth note, and a quarter note. Staff-3 (bass clef) has a half note chord, followed by a quarter note, an eighth note, and a quarter note. The Right Hand (treble clef) has a half note chord, followed by a quarter note, an eighth note, and a quarter note. The Left Hand (treble clef) has a half note chord, followed by a quarter note, an eighth note, and a quarter note. Staff-2 (bass clef) has a half note chord, followed by a quarter note, an eighth note, and a quarter note. The bottom part of Staff-2 shows a guitar fretboard diagram with a barre on the first fret and various notes.

13

Staff-4

Staff-1

Staff-3

Right Hand

Left Hand

Staff-2

14

Staff-4

Staff-1

Staff-3

Right Hand

Left Hand

Staff-2

15

Staff-4

Staff-1

Staff-3

Right Hand

Left Hand

Staff-2

16

Staff-4

Staff-1

Staff-3

Right Hand

Left Hand

Staff-2

17

Staff-4

Staff-1

Staff-3

Right Hand

Left Hand

Staff-2

Detailed description of measure 17: This system contains six staves. Staff-4 (bass clef) has a whole rest followed by a half note chord. Staff-1 (bass clef) has a half note chord, followed by quarter notes, and a half note chord. Staff-3 (bass clef) has a whole rest followed by quarter notes. Right Hand (treble clef) has a whole rest followed by a half note chord. Left Hand (treble clef) has a half note chord, followed by quarter notes, and a half note chord. Staff-2 (bass clef) has a whole rest followed by quarter notes, a half note chord, and quarter notes.

18

Staff-4

Staff-1

Staff-3

Right Hand

Left Hand

Staff-2

Detailed description of measure 18: This system contains six staves. Staff-4 (bass clef) has a whole rest followed by a half note chord. Staff-1 (bass clef) has a half note chord, followed by quarter notes, and a half note chord. Staff-3 (bass clef) has a whole rest followed by quarter notes. Right Hand (treble clef) has a whole rest followed by a half note chord. Left Hand (treble clef) has a half note chord, followed by quarter notes, and a half note chord. Staff-2 (bass clef) has a whole rest followed by quarter notes, a half note chord, and quarter notes.

19

Staff-4

Staff-1

Staff-3

Right Hand

Left Hand

Staff-2

Detailed description: This block contains the musical notation for measure 19. It consists of six staves. Staff-4 (bass clef) has a whole rest followed by a half note G2, a half note F2, and a whole note E2. Staff-1 (bass clef) has a whole rest followed by a half note G2, a half note F2, and a whole note E2. Staff-3 (bass clef) has a whole rest followed by a half note G2, a half note F2, and a whole note E2. The Right Hand (treble clef) has a whole rest followed by a half note G4, a half note F4, and a whole note E4. The Left Hand (treble clef) has a whole rest followed by a half note G4, a half note F4, and a whole note E4. Staff-2 (bass clef) has a whole rest followed by a half note G2, a half note F2, and a whole note E2.

20

Staff-4

Staff-1

Staff-3

Right Hand

Left Hand

Staff-2

Detailed description: This block contains the musical notation for measure 20. It consists of six staves. Staff-4 (bass clef) has a whole rest followed by a half note G2, a half note F2, and a whole note E2. Staff-1 (bass clef) has a whole rest followed by a half note G2, a half note F2, and a whole note E2. Staff-3 (bass clef) has a whole rest followed by a half note G2, a half note F2, and a whole note E2. The Right Hand (treble clef) has a whole rest followed by a half note G4, a half note F4, and a whole note E4. The Left Hand (treble clef) has a whole rest followed by a half note G4, a half note F4, and a whole note E4. Staff-2 (bass clef) has a whole rest followed by a half note G2, a half note F2, and a whole note E2.

21

Staff-4

Staff-1

Staff-3

Right Hand

Left Hand

Staff-2

Detailed description of measure 21: This measure is divided into six staves. Staff-4 (bass clef) contains a series of chords. Staff-1 (bass clef) features a melodic line with eighth notes and a fermata. Staff-3 (bass clef) shows a melodic line with eighth notes. The Right Hand (treble clef) has a series of chords, with a long note held over. The Left Hand (treble clef) has a melodic line with eighth notes and a fermata. Staff-2 (bass clef) contains a complex arrangement of notes, including chords and single notes, with a fermata.

22

Staff-4

Staff-1

Staff-3

Right Hand

Left Hand

Staff-2

Detailed description of measure 22: This measure is divided into six staves. Staff-4 (bass clef) contains a series of chords. Staff-1 (bass clef) features a melodic line with eighth notes and a fermata. Staff-3 (bass clef) shows a melodic line with eighth notes. The Right Hand (treble clef) has a series of chords, with a long note held over. The Left Hand (treble clef) has a melodic line with eighth notes and a fermata. Staff-2 (bass clef) contains a complex arrangement of notes, including chords and single notes, with a fermata.

23

Staff-4

Staff-1

Staff-3

Right Hand

Left Hand

Staff-2

24

Staff-4

Staff-1

Staff-3

Right Hand

Left Hand

Staff-2

Staff-4

Staff-1

Staff-3

Right Hand

Left Hand

Staff-2

Staff-4

Staff-1

Staff-3

Right Hand

Left Hand

Staff-2

27

Staff-4

Staff-1

Staff-3

Right Hand

Left Hand

Staff-2

Detailed description of measure 27: This measure is divided into six staves. Staff-4 (bass clef) contains a whole note chord. Staff-1 (bass clef) contains a whole note chord. Staff-3 (bass clef) contains a whole note chord. The Right Hand (treble clef) contains a whole note chord. The Left Hand (treble clef) contains a whole note chord. Staff-2 (percussion clef) contains a series of rhythmic patterns, including eighth notes and rests, with some notes marked with a '7'.

28

Staff-4

Staff-1

Staff-3

Right Hand

Left Hand

Staff-2

Detailed description of measure 28: This measure is divided into six staves. Staff-4 (bass clef) contains a whole note chord. Staff-1 (bass clef) contains a whole note chord. Staff-3 (bass clef) contains a whole note chord. The Right Hand (treble clef) contains a whole note chord. The Left Hand (treble clef) contains a whole note chord. Staff-2 (percussion clef) contains a series of rhythmic patterns, including eighth notes and rests, with some notes marked with a '7'.

Staff-4

Staff-1

Staff-3

Right Hand

Left Hand

Staff-2

Staff-4

Staff-1

Staff-3

Right Hand

Left Hand

Staff-2

31

Staff-4

Staff-1

Staff-3

Right Hand

Left Hand

Staff-2

32

Staff-4

Staff-1

Staff-3

Right Hand

Left Hand

Staff-2

33

Staff-4

Staff-1

Staff-3

Right Hand

Left Hand

Staff-2

34

Staff-4

Staff-1

Staff-3

Right Hand

Left Hand

Staff-2

35

Staff-4

Staff-1

Staff-3

Right Hand

Left Hand

Staff-2

36

Staff-4

Staff-1

Staff-3

Right Hand

Left Hand

Staff-2

U2 - Sweetest Thing

Staff-4

♩ = 72,000031

The image displays a musical score for guitar, specifically for the song "Sweetest Thing" by U2. It features a bass line at the top and 12 fretted guitar staves below. The bass line is in 4/4 time and starts with a whole rest, followed by a series of eighth notes. The guitar staves are numbered 5, 8, 11, 14, 17, 20, 23, 26, and 29, indicating the fret position for each staff. Each staff contains a series of eighth notes, with some staves having a bar line in the middle. The notation is in bass clef. At the bottom of the page, there is a copyright notice and a website reference.

All Rights Reserved

V.S.

2

Staff-4

32

Musical staff 4, measures 32-37. The staff is in bass clef and contains six measures of music. Each measure consists of a rhythmic pattern of eighth notes on the staff, with a corresponding guitar fretboard diagram below it. The fretboard diagrams show the fingerings for the notes. The pattern repeats every two measures.

35

Musical staff 4, measures 38-41. The staff is in bass clef and contains four measures of music. The first three measures follow the same rhythmic pattern as the previous section, with corresponding guitar fretboard diagrams. The fourth measure is a whole rest, indicated by a vertical line with a horizontal bar across the staff.

2

Staff-1

32



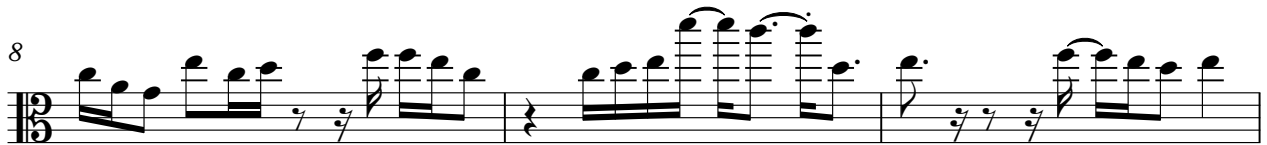
35



U2 - Sweetest Thing

Staff-3

♩ = 72,000031



All Rights Reserved

V.S.

2

Staff-3

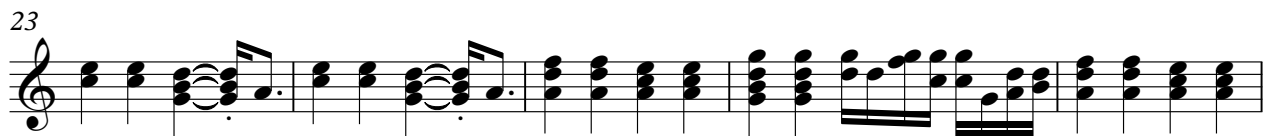
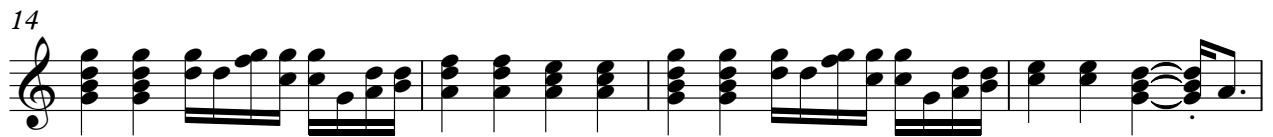
35



U2 - Sweetest Thing

Right Hand

♩ = 72,000031



All Rights Reserved

U2 - Sweetest Thing

Left Hand

♩ = 72,000031

5
9
13
17
21
25
29
33
35

All Rights Reserved

♩ = 72,000031

4

6

8

10

12

14

16

18

20

All Rights Reserved

V.S.

22

24

26

28

30

32

34

36