

Fugain Michel - Je N`Aurai Pas Letemps

♩ = 81,000084

Kora

Acoustic Bass

Alto

♩ = 81,000084

Viola

Viola

Violoncello



4

Kora

A. Bass

A.

Vla.

Vla.

Vc.

7

Cl.
Kora
A. Bass
Vla.
Vla.
Vc.

Detailed description: This system contains measures 7, 8, and 9. The Clarinet (Cl.) part starts with a whole rest in measure 7, followed by eighth notes in measure 8, and a half note in measure 9. The Kora part features a rhythmic pattern of eighth notes with grace notes throughout. The Acoustic Bass (A. Bass) part has a simple bass line with quarter and half notes. The Violins (Vla.) and Violas (Vc.) parts play sustained chords and melodic fragments.



10

Cl.
Kora
A. Bass
Tape Smp. Str.
Vla.

Detailed description: This system contains measures 10, 11, and 12. The Clarinet (Cl.) part has a half note in measure 10, followed by eighth notes in measure 11, and a half note in measure 12. The Kora part continues with its rhythmic eighth-note pattern. The Acoustic Bass (A. Bass) part has a steady bass line. The Tape Smp. Str. part consists of a series of eighth-note chords. The Viola (Vla.) part plays a rhythmic pattern of eighth-note chords.

12

Cl.

Kora

A. Bass

Tape Smp. Str

Vla.

Vla.

Vc.



15

Cl.

Kora

A. Bass

Vla.

Vla.

Vc.

18

Cl. Perc. Kora A. Bass Vla. Vla. Vc.

This musical system covers measures 18 and 19. It features six staves: Clarinet (Cl.), Percussion (Perc.), Kora, Acoustic Bass (A. Bass), Violin (Vla.), and Viola (Vla.). The Clarinet part has a melodic line with a triplet in measure 19. The Percussion part has a steady rhythmic pattern. The Kora part has a complex rhythmic pattern with many sixteenth notes. The Acoustic Bass part has a simple bass line. The Violin and Viola parts have a melodic line with a triplet in measure 19. The Viola part also has a triplet in measure 19.



20

Cl. Perc. Kora A. Bass Vla. Vla. Vc. Cb.

This musical system covers measures 20 and 21. It features seven staves: Clarinet (Cl.), Percussion (Perc.), Kora, Acoustic Bass (A. Bass), Violin (Vla.), Viola (Vla.), and Cello (Cb.). The Clarinet part has a melodic line with a triplet in measure 20. The Percussion part has a steady rhythmic pattern. The Kora part has a complex rhythmic pattern with many sixteenth notes. The Acoustic Bass part has a simple bass line. The Violin and Viola parts have a melodic line with a triplet in measure 20. The Cello part has a simple bass line.

22

Cl.

Perc.

Kora

A. Bass

Vla.

Vla.

Vc.

Cb.

3

Detailed description: This is a page of a musical score, page 5, starting at measure 22. The score is arranged in a system with seven staves. The instruments are: Clarinet (Cl.), Percussion (Perc.), Kora, Acoustic Bass (A. Bass), Violin (Vla.), Viola (Vla.), and Cello (Cb.). The Clarinet part (top staff) begins with a quarter rest, followed by a half note B-flat, a quarter note G, and a quarter note F. The Percussion part (second staff) features a rhythmic pattern of eighth notes with 'x' marks above them, indicating a specific sound effect. The Kora part (third staff) consists of a series of eighth notes with a 'z' mark above each, suggesting a tremolo or a specific playing technique. The Acoustic Bass part (fourth staff) starts with a quarter note G, followed by quarter notes F, E, D, C, and B. The Violin and Viola parts (fifth and sixth staves) play a melodic line with eighth notes and slurs. The Cello part (seventh staff) has a quarter note G, followed by a quarter rest. A triplet of eighth notes (G, F, E) is marked with a '3' above it in the Clarinet part at the end of measure 23.

24

Fl.
Cl.
Perc.
Kora
A. Bass
Vla.
Vla.
Vc.



27

Fl.
Cl.
Perc.
Kora
A. Bass
Vla.
Vla.
Vc.

29

Fl.

Cl.

Perc.

Kora

A. Bass

Vla.

Vla.

Vc.

31

Fl.

Cl.

Perc.

Kora

A. Bass

Vla.

Vla.

Vc.

Detailed description: This page of a musical score covers measures 31 and 32. The score is arranged in two systems. The first system includes parts for Flute (Fl.), Clarinet (Cl.), Percussion (Perc.), Kora, and Acoustic Bass (A. Bass). The second system includes parts for Violin I (Vla.), Violin II (Vla.), and Violoncello (Vc.). The Flute part in measure 31 has a dotted quarter note followed by a quarter note with a flat. The Clarinet part features a melodic line with slurs and ties. The Percussion part consists of a rhythmic pattern of eighth notes marked with 'x'. The Kora part has a complex rhythmic pattern with many sixteenth notes. The Acoustic Bass part has a simple line of quarter notes. The Violin and Cello parts feature intricate patterns with triplets and slurs. The page number '31' is written at the top left of the first staff.

33

Fl.

Cl.

Perc.

Kora

A. Bass

Vla.

Vla.

Vc.

Detailed description: This page of a musical score covers measures 33 and 34. The score is for a multi-instrument ensemble. The Flute (Fl.) and Clarinet (Cl.) parts are in the upper staves, both playing a simple melodic line. The Percussion (Perc.) part features a rhythmic pattern of eighth notes with 'x' marks above them, indicating a specific sound effect. The Kora part consists of a complex, repetitive rhythmic pattern of eighth notes. The Acoustic Bass (A. Bass) part provides a steady bass line. The Violin (Vla.), Viola (Vla.), and Violoncello (Vc.) parts are in the lower staves, with the Violin and Viola playing a melodic line and the Violoncello providing a bass line. A triplet of eighth notes is marked in both the Viola and Violoncello parts in measure 34.

35

Fl.

Cl.

Perc.

Kora

A. Bass

Vla.

Vla.

Vc.

Detailed description: This page of a musical score covers measures 35 and 36. The score is arranged in a system with six staves. The Flute (Fl.) part in measure 35 has a dotted quarter note followed by a quarter note with a flat. The Clarinet (Cl.) part in measure 35 features a triplet of eighth notes. The Percussion (Perc.) part consists of a rhythmic pattern of eighth notes with 'x' marks above them. The Kora part in measure 35 has a series of chords with eighth notes. The Acoustic Bass (A. Bass) part in measure 35 has a dotted quarter note followed by a quarter note with a flat. The Violin (Vla.) and Viola (Vla.) parts in measure 35 feature triplet eighth notes. The Violoncello (Vc.) part in measure 35 has a triplet of eighth notes. The score continues into measure 36 with similar rhythmic and melodic patterns across all parts.

37

Fl.

Cl.

Perc.

Kora

A. Bass

Vla.

Vla.

Vc.

Detailed description: This page of a musical score covers measures 37, 38, and 39. The Flute (Fl.) part is mostly silent, with a whole rest in measure 37 and whole rests in measures 38 and 39. The Clarinet (Cl.) part begins in measure 37 with a whole rest, then plays a melodic line in measures 38 and 39. The Percussion (Perc.) part features a consistent rhythmic pattern of eighth notes with 'x' marks above them, over a bass line of quarter notes. The Kora part plays a complex, rhythmic melody with many sixteenth notes and rests. The Acoustic Bass (A. Bass) part provides a simple bass line with quarter notes. The Violin I (Vla.) part has a whole rest in measure 37 and rests in measures 38 and 39. The Violin II (Vla.) part has a half note in measure 37 and rests in measures 38 and 39. The Violoncello (Vc.) part has a half note in measure 37 and rests in measures 38 and 39.

40

Cl.
Perc.
Kora
A. Bass
Vla.
Vla.
Vc.
Cb.

Detailed description: This system contains measures 40, 41, and 42. The Clarinet (Cl.) part starts with a half note G4, followed by a quarter note A4, and a quarter note Bb4. The Percussion (Perc.) part features a steady eighth-note pattern of 'x' marks. The Kora part has a melodic line with eighth notes and rests. The Acoustic Bass (A. Bass) part has a simple bass line with quarter notes. The Violins (Vla.) and Violas (Vla.) parts are mostly silent, with some notes appearing in measure 42. The Viola (Vc.) part has a few notes in measure 42. The Contrabass (Cb.) part has a few notes in measure 42.



43

Cl.
Perc.
Kora
A. Bass
Vla.
Vla.
Vc.

Detailed description: This system contains measures 43, 44, and 45. The Clarinet (Cl.) part continues with a half note G4, followed by a quarter note A4, and a quarter note Bb4. The Percussion (Perc.) part continues with the eighth-note 'x' pattern. The Kora part has a more complex melodic line with eighth notes and rests. The Acoustic Bass (A. Bass) part has a simple bass line with quarter notes. The Violins (Vla.) and Violas (Vla.) parts have a simple harmonic accompaniment with quarter notes. The Viola (Vc.) part has a simple bass line with quarter notes.

46

Cl.
Kora
A. Bass
Vla.
Vla.
Vc.



50

♩ = 74,000076 ♩ = 69,000015

Cl.
Kora
A. Bass
Vla.
Vla.
Vc.

53 ♩ = 64,000000 ♩ = 59,000008 ♩ = 54,000004 ♩ = 49,000031

Cl.

Kora

A. Bass

Vla.

Vla.

Vc.

Flute

Fugain Michel - Je N`Aurai Pas Letemps

♩ = 81,000084

25

25 26 27 28

29

29 30 31 32 33 34

♩ = 74,000061500000480000004 = 49,00002

14

2

35 36 37 38

Fugain Michel - Je N`Aurai Pas Letemps

Clarinet in B \flat

$\text{♩} = 81,000084$

6

11

16

21

26

31

36

41

47

52 $\text{♩} = 74,069,000015$ $\text{♩} = 64,000000$ $\text{♩} = 59,000008$ $\text{♩} = 54,0000031$

Fugain Michel - Je N`Aurai Pas Letemps

Percussion

♩ = 81,000084

17

21

25

29

33

37

41

45

♩ = 74,000081 61,500081 61,000031

6 2

Fugain Michel - Je N`Aurai Pas Letemps

Kora

♩ = 81,000084

5

9

12

16

19

21

23

26

28

V.S.

Detailed description: The image shows a musical score for a Kora instrument. It consists of ten staves of music, each starting with a measure number (5, 9, 12, 16, 19, 21, 23, 26, 28). The music is written in a single melodic line on a five-line staff. The time signature is 4/4, and the tempo is marked as ♩ = 81,000084. The key signature has one flat (B-flat). The notation includes various rhythmic values such as eighth and sixteenth notes, rests, and accidentals (sharps and flats). The piece concludes with a double bar line and the instruction 'V.S.' (Vivace).

2

30 Kora

32

34

36

39

43

46

50 ♩ = 74,000076 ♩ = 69,000015

53 ♩ = 64,000000 ♩ = 59,000008 ♩ = 54,000004 ♩ = 49,000031

Fugain Michel - Je N`Aurai Pas Letemps

Acoustic Bass

♩ = 81,000084



8



15



22



28



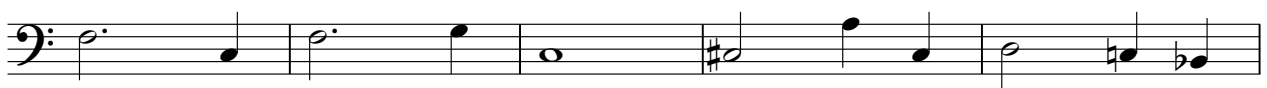
33



40



47



52 ♩ = 74,000076 ♩ = 64,000069 ♩ = 54,000043



Alto

Fugain Michel - Je N`Aurai Pas Letemps

♩ = 81,000084

4/4

6


♩ = 74,000016 61,500009 58,000003 1

45 **2**

Fugain Michel - Je N`Aurai Pas Letemps
Tape Sampler Keyboard [Strings]

♩ = 81,000084

9



12



14

♩ = 74,000076 15 ♩ = 54,000008 ♩ = 44,000064

38

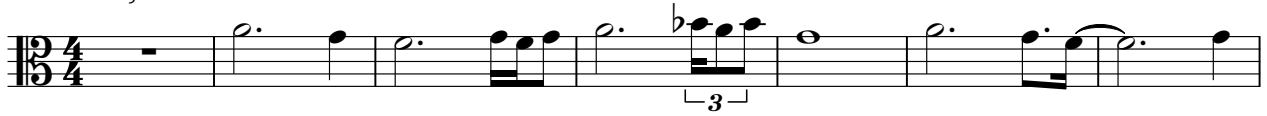
2



Viola

Fugain Michel - Je N`Aurai Pas Letemps

♩ = 81,000084



8



12



17



23



31



35



42

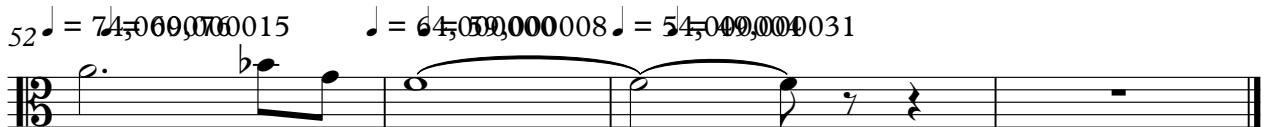


48



52

♩ = 74,06900015 ♩ = 64,059,000008 ♩ = 54,049,000031



Fugain Michel - Je N`Aurai Pas Letemps

Viola

♩ = 81,000084

7

15

21

26

33

37

45

♩ = 74,000076 ♩ = 79,000015 ♩ = 64,000065 ♩ = 49,000431

51

Violoncello

Fugain Michel - Je N`Aurai Pas Letemps

♩ = 81,000084

First staff of music in bass clef, 4/4 time signature. It begins with a whole rest, followed by a half note G2, a half note A2, and a triplet of eighth notes G2, A2, B2. This is followed by another triplet of eighth notes A2, B2, C3, and then a half note G2.

7

Second staff of music in bass clef, 4/4 time signature. It starts with a half note G2, a half note A2, and a quarter note B2 with a flat. This is followed by a quarter rest, a quarter note G2, and a quarter note F2. The staff then contains a whole rest, a quarter rest, a quarter note G2, a quarter note F2, and a whole note G2.

15

Third staff of music in bass clef, 4/4 time signature. It begins with a whole note G2, a whole note A2, and a whole note B2. This is followed by a quarter note G2, a quarter note A2, a quarter note B2, and a quarter note C3. The next measure contains a triplet of eighth notes G2, A2, B2, followed by a quarter note G2. The final measure contains a quarter note G2, a quarter note A2, and a quarter note B2.

21

Fourth staff of music in bass clef, 4/4 time signature. It starts with a whole note G2, a quarter note A2, a quarter note B2, a quarter note C3, a quarter note B2, a quarter note A2, a quarter note G2, and a quarter note F2. This is followed by a quarter note G2, a quarter note A2, and a quarter note B2.

26

Fifth staff of music in bass clef, 4/4 time signature. It begins with a whole rest, followed by a quarter note G2, a quarter note A2, a quarter note B2, and a quarter note C3. This is followed by a quarter note B2, a quarter note A2, a quarter note G2, and a quarter note F2. The next measure contains a quarter note G2, a quarter note A2, and a quarter note B2. This is followed by a triplet of eighth notes G2, A2, B2, a quarter note G2, a quarter note A2, and a quarter note B2. The final measure contains a quarter note G2, a quarter note A2, and a quarter note B2.

33

Sixth staff of music in bass clef, 4/4 time signature. It starts with a quarter note G2, a quarter note A2, a quarter note B2, and a quarter note C3. This is followed by a quarter note B2, a quarter note A2, a quarter note G2, and a quarter note F2. The next measure contains a quarter note G2, a quarter note A2, and a quarter note B2. This is followed by a quarter note G2, a quarter note A2, and a quarter note B2. The final measure contains a quarter note G2, a quarter note A2, and a quarter note B2.

37

Seventh staff of music in bass clef, 4/4 time signature. It begins with a quarter note G2, a quarter note A2, and a quarter note B2. This is followed by a quarter rest, a quarter note G2, a quarter note A2, a quarter note B2, and a quarter note C3. The next measure contains a quarter note B2, a quarter note A2, a quarter note G2, and a quarter note F2. This is followed by a quarter note G2, a quarter note A2, and a quarter note B2. The final measure contains a quarter note G2, a quarter note A2, and a quarter note B2.

46

Eighth staff of music in bass clef, 4/4 time signature. It starts with a half note G2, a half note A2, and a half note B2. This is followed by a half note G2, a half note A2, and a half note B2. The next measure contains a half note G2, a half note A2, and a half note B2. This is followed by a quarter note G2, a quarter note A2, and a quarter note B2. The final measure contains a half note G2.

51

♩ = 74,000079 ♩ = 69,000015 ♩ = 64,000008 ♩ = 59,000064

Ninth staff of music in bass clef, 4/4 time signature. It begins with a quarter note G2, a quarter note A2, a quarter note B2, and a quarter note C3. This is followed by a quarter note B2, a quarter note A2, a quarter note G2, and a quarter note F2. The next measure contains a quarter note G2, a quarter note A2, and a quarter note B2. This is followed by a quarter note G2, a quarter note A2, and a quarter note B2. The final measure contains a quarter note G2, a quarter note A2, and a quarter note B2.

Contrabass

Fugain Michel - Je N`Aurai Pas Letemps

♩ = 81,000084

20

18

41

♩ = 74,000076 159,000048 300,000004 = 49,00002

9

2