

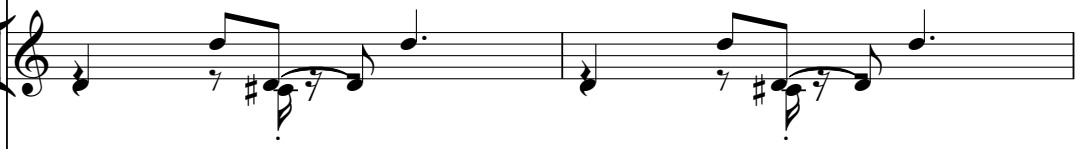
# G G Anderson - Jamaica Girl

♩ = 112,000893

DRUMS 



5

DRUMS   
MUTED GTR   
SYN STRING 



7

MELODY   
DRUMS   
BASS   
STEEL GTR   
MUTED GTR   
PIZZICATO   
SYN STRING 

9

MELODY

DRUMS

BASS

STEEL GTR

MUTED GTR

PIZZICATO

SYN STRING

FANTASIA



11

MELODY

DRUMS

BASS

STEEL GTR

MUTED GTR

PIZZICATO

SYN STRING

13

MELODY

DRUMS

BASS

STEEL GTR

MUTED GTR

PIZZICATO

SYN STRING

FANTASIA



15

MELODY

DRUMS

BASS

MUTED GTR

PIZZICATO

SYN STRING

17

MELODY  
DRUMS  
BASS  
STEEL GTR  
MUTED GTR  
PIZZICATO  
SYN STRING

Detailed description: This system of musical notation covers measures 17 and 18. It features seven staves: MELODY (treble clef), DRUMS (drum clef), BASS (treble clef), STEEL GTR (treble clef), MUTED GTR (treble clef), PIZZICATO (treble clef), and SYN STRING (treble clef). The MELODY staff shows a sequence of notes including a quarter rest, followed by quarter notes, a half note, and a quarter note with a sharp sign. The DRUMS staff uses 'x' marks for cymbals and stems for drums. The BASS staff contains a series of chords. The STEEL GTR staff has chords with a sharp sign. The MUTED GTR staff features notes with a slash through the stem. The PIZZICATO staff shows chords with a slash through the stem. The SYN STRING staff has a whole note chord with a sharp sign.



19

MELODY  
DRUMS  
BASS  
STEEL GTR  
MUTED GTR  
PIZZICATO  
SYN STRING

Detailed description: This system of musical notation covers measures 19 and 20. It features seven staves: MELODY (treble clef), DRUMS (drum clef), BASS (treble clef), STEEL GTR (treble clef), MUTED GTR (treble clef), PIZZICATO (treble clef), and SYN STRING (treble clef). The MELODY staff shows a sequence of notes including a quarter note with a sharp sign, quarter notes, a half note, and a quarter note with a sharp sign. The DRUMS staff uses 'x' marks for cymbals and stems for drums. The BASS staff contains a series of chords. The STEEL GTR staff has chords with a sharp sign. The MUTED GTR staff features notes with a slash through the stem. The PIZZICATO staff shows chords with a slash through the stem. The SYN STRING staff has a whole note chord with a sharp sign.

21

MELODY

DRUMS

BASS

MUTED GTR

PIZZICATO



23

MELODY

DRUMS

BASS

MUTED GTR

PIZZICATO

FANTASIA

25

MELODY

DRUMS

BASS

MUTED GTR

PIZZICATO

SYN STRING

FANTASIA



27

MELODY

DRUMS

BASS

MUTED GTR

PIZZICATO

SYN STRING

FANTASIA

29

MELODY

DRUMS

BASS

MUTED GTR

PIZZICATO

SYN STRING

FANTASIA



31

MELODY

DRUMS

BASS

MUTED GTR

PIZZICATO

SYN STRING

FANTASIA

33

MELODY

DRUMS

BASS

MUTED GTR

PIZZICATO

SYN STRING

FANTASIA



35

MELODY

DRUMS

BASS

MUTED GTR

PIZZICATO

SYN STRING



37

MELODY

DRUMS

BASS

MUTED GTR

PIZZICATO

SYN STRING

FANTASIA



39

MELODY

DRUMS

BASS

MUTED GTR

PIZZICATO

SYN STRING

FANTASIA

41

MELODY

DRUMS

BASS

MUTED GTR

PIZZICATO

SYN STRING

FANTASIA



43

MELODY

DRUMS

BASS

MUTED GTR

PIZZICATO

SYN STRING

45

MELODY

DRUMS

BASS

MUTED GTR

PIZZICATO

SYN STRING

FANTASIA



47

MELODY

DRUMS

BASS

STEEL GTR

MUTED GTR

PIZZICATO

SYN STRING

49

MELODY

DRUMS

BASS

STEEL GTR

MUTED GTR

PIZZICATO

SYN STRING

FANTASIA

51

MELODY

DRUMS

BASS

STEEL GTR

MUTED GTR

PIZZICATO

SYN STRING

53

MELODY

DRUMS

BASS

STEEL GTR

MUTED GTR

PIZZICATO

SYN STRING

FANTASIA



55

MELODY

DRUMS

BASS

MUTED GTR

PIZZICATO

SYN STRING

57

MELODY  
DRUMS  
BASS  
STEEL GTR  
MUTED GTR  
PIZZICATO  
SYN STRING

Detailed description: This system of music covers measures 57 and 58. The MELODY staff features a treble clef and a key signature of one sharp (F#). The melody begins with a quarter note G4, followed by quarter notes A4, B4, and C5, then a dotted quarter note D5. A slur covers the next two measures, containing a half note E5 and a quarter note F#5. The DRUMS staff uses a standard drum notation with 'x' for cymbals and solid circles for other drums. The BASS staff is in a bass clef, showing a simple bass line. The STEEL GTR staff has a treble clef and contains a melodic line with slurs and ties. The MUTED GTR staff has a treble clef and shows muted notes with 'x' marks. The PIZZICATO staff has a treble clef and contains a rhythmic pattern of eighth notes with slurs. The SYN STRING staff has a bass clef and shows sustained chords with a slur.



59

MELODY  
DRUMS  
BASS  
STEEL GTR  
MUTED GTR  
PIZZICATO  
SYN STRING

Detailed description: This system of music covers measures 59 and 60. The MELODY staff continues the melody from the previous system, starting with a quarter note G4, followed by quarter notes A4, B4, and C5, then a dotted quarter note D5. A slur covers the next two measures, containing a half note E5 and a quarter note F#5. The DRUMS staff continues with the same drum pattern. The BASS staff continues with the same bass line. The STEEL GTR staff continues with the same melodic line. The MUTED GTR staff continues with the same muted notes. The PIZZICATO staff continues with the same rhythmic pattern. The SYN STRING staff continues with the same sustained chords.

61

MELODY

DRUMS

BASS

MUTED GTR

PIZZICATO

SYN STRING

FANTASIA



63

MELODY

DRUMS

BASS

MUTED GTR

PIZZICATO

SYN STRING

65

MELODY

DRUMS

BASS

MUTED GTR

PIZZICATO

SYN STRING

FANTASIA



67

MELODY

DRUMS

BASS

MUTED GTR

PIZZICATO

SYN STRING

FANTASIA



69

MELODY

DRUMS

BASS

MUTED GTR

PIZZICATO

SYN STRING

FANTASIA



71

MELODY

DRUMS

BASS

MUTED GTR

PIZZICATO

SYN STRING

FANTASIA

73

MELODY  
DRUMS  
BASS  
MUTED GTR  
PIZZICATO  
SYN STRING  
FANTASIA

Detailed description: This block contains the musical notation for measures 73 and 74. The score is arranged in a vertical stack of seven staves. The MELODY staff (treble clef) features a melodic line with eighth and quarter notes, including a half-note chord in measure 74. The DRUMS staff (drum clef) shows a consistent rhythmic pattern of eighth notes. The BASS staff (treble clef) provides a bass line with eighth and quarter notes. The MUTED GTR staff (treble clef) contains a series of muted notes, primarily eighth notes. The PIZZICATO staff (treble clef) shows a rhythmic pattern of eighth notes with a 'pizzicato' marking. The SYN STRING staff (treble clef) features a sustained chord with a 'syn string' marking. The FANTASIA staff (treble clef) is mostly empty, with a few notes appearing in measure 74.



75

MELODY  
DRUMS  
BASS  
MUTED GTR  
PIZZICATO  
SYN STRING

Detailed description: This block contains the musical notation for measures 75 and 76. The score is arranged in a vertical stack of six staves. The MELODY staff (treble clef) continues the melodic line with eighth and quarter notes. The DRUMS staff (drum clef) maintains the eighth-note rhythmic pattern. The BASS staff (treble clef) continues the bass line. The MUTED GTR staff (treble clef) continues the muted eighth-note pattern. The PIZZICATO staff (treble clef) continues the eighth-note rhythmic pattern. The SYN STRING staff (treble clef) continues the sustained chord with a 'syn string' marking.

77

MELODY

DRUMS

BASS

MUTED GTR

PIZZICATO

SYN STRING

FANTASIA



79

MELODY

DRUMS

BASS

MUTED GTR

PIZZICATO

SYN STRING

81

MELODY

DRUMS

BASS

MUTED GTR

PIZZICATO

SYN STRING

FANTASIA



83

MELODY

DRUMS

BASS

MUTED GTR

PIZZICATO

SYN STRING

85

MELODY

DRUMS

BASS

MUTED GTR

PIZZICATO

SYN STRING

FANTASIA



87

MELODY

DRUMS

BASS

MUTED GTR

PIZZICATO

SYN STRING

89

MELODY

DRUMS

BASS

MUTED GTR

PIZZICATO

SYN STRING

FANTASIA



91

MELODY

DRUMS

BASS

MUTED GTR

PIZZICATO

SYN STRING

93

MELODY

DRUMS

BASS

MUTED GTR

PIZZICATO

SYN STRING

FANTASIA



95

MELODY

DRUMS

BASS

MUTED GTR

PIZZICATO

SYN STRING

97

MELODY  
DRUMS  
BASS  
MUTED GTR  
PIZZICATO  
SYN STRING  
FANTASIA

Detailed description: This system of musical notation covers measures 97 and 98. It features seven staves: MELODY (treble clef), DRUMS (drum clef), BASS (treble clef), MUTED GTR (treble clef), PIZZICATO (treble clef), SYN STRING (treble clef), and FANTASIA (treble clef). The MELODY staff shows a sequence of notes with various accidentals. The DRUMS staff includes a pattern of 'x' marks for cymbals and note heads for other drums. The BASS staff contains a complex line with many accidentals. The MUTED GTR staff has a line with a '7' indicating a fret. The PIZZICATO staff shows a rhythmic pattern of chords and rests. The SYN STRING staff has a long, continuous line with a double bar line. The FANTASIA staff is mostly empty with a few notes and rests.



99

MELODY  
DRUMS  
BASS  
MUTED GTR  
PIZZICATO  
SYN STRING

Detailed description: This system of musical notation covers measures 99 and 100. It features six staves: MELODY (treble clef), DRUMS (drum clef), BASS (treble clef), MUTED GTR (treble clef), PIZZICATO (treble clef), and SYN STRING (treble clef). The MELODY staff continues the melodic line. The DRUMS staff shows a consistent rhythmic pattern. The BASS staff has a complex line with many accidentals. The MUTED GTR staff has a line with a '7' indicating a fret. The PIZZICATO staff shows a rhythmic pattern of chords and rests. The SYN STRING staff has a long, continuous line with a double bar line.



101

MELODY

DRUMS

BASS

MUTED GTR

PIZZICATO

SYN STRING

FANTASIA



103

MELODY

DRUMS

BASS

MUTED GTR

PIZZICATO

SYN STRING

105

MELODY

DRUMS

BASS

MUTED GTR

PIZZICATO

SYN STRING

FANTASIA



107

MELODY

DRUMS

BASS

MUTED GTR

PIZZICATO

SYN STRING

109

MELODY

DRUMS

BASS

MUTED GTR

PIZZICATO

SYN STRING

FANTASIA



111

MELODY

DRUMS

BASS

MUTED GTR

PIZZICATO

SYN STRING

113

MELODY

DRUMS

BASS

MUTED GTR

PIZZICATO

SYN STRING

FANTASIA



115

MELODY

DRUMS

BASS

MUTED GTR

PIZZICATO

SYN STRING

117

MELODY

DRUMS

BASS

MUTED GTR

PIZZICATO

SYN STRING

118

MELODY

DRUMS

BASS

MUTED GTR

PIZZICATO

SYN STRING


FANTASIA

122

DRUMS

131

DRUMS

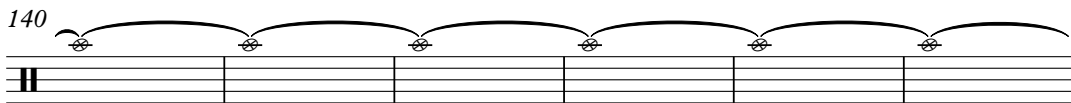


A drum staff with a double bar line at the beginning. Above the staff, there are six measures, each containing a single note on the top line. Each note is connected to the next by a slur. Above each note is a small circular symbol with a cross inside. The staff ends with a double bar line.



140

DRUMS




A drum staff with a double bar line at the beginning. Above the staff, there are five measures, each containing a single note on the top line. Each note is connected to the next by a slur. Above each note is a small circular symbol with a cross inside. The staff ends with a double bar line.



146

DRUMS



A drum staff with a double bar line at the beginning. Above the staff, there are five measures, each containing a single note on the top line. Each note is connected to the next by a slur. Above each note is a small circular symbol with a cross inside. The staff ends with a double bar line.

G G Anderson - Jamaica Girl

MELODY

♩ = 112,000893

6

11

15

19

24

29

33

37

41

45

V.S.





91

95

99

103

107

111

115

118

# G G Anderson - Jamaica Girl

## DRUMS

♩ = 112,000893  
2

6

9

13

16

20

24

28

31

34

V.S.

DRUMS

38

41

45

48

52

55

59

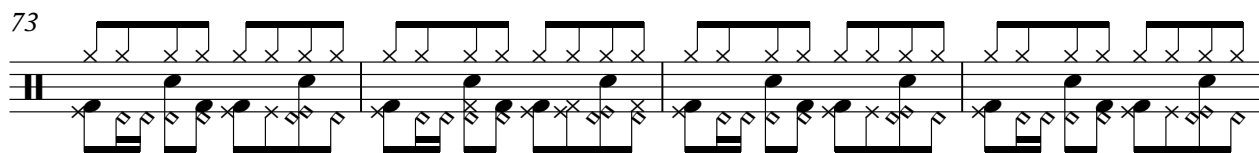
63

67

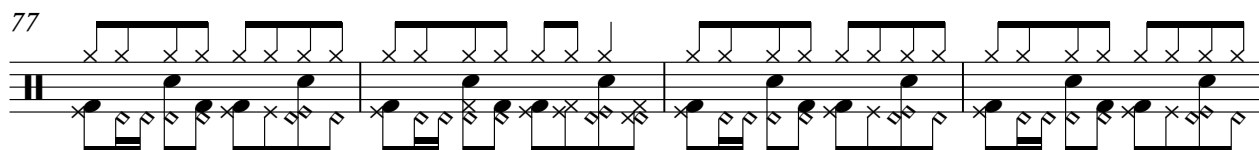
70

DRUMS

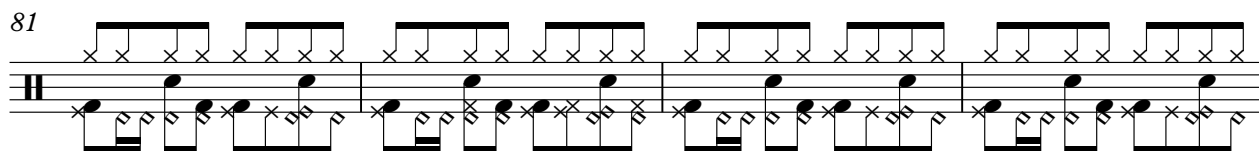
73



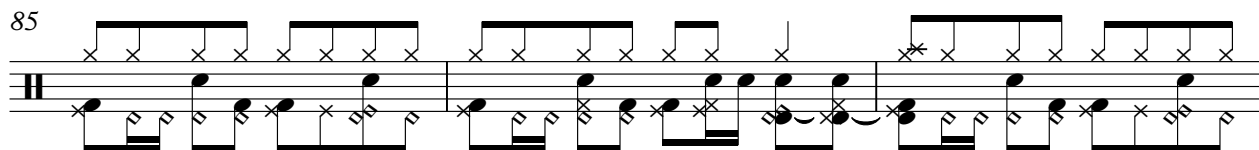
77



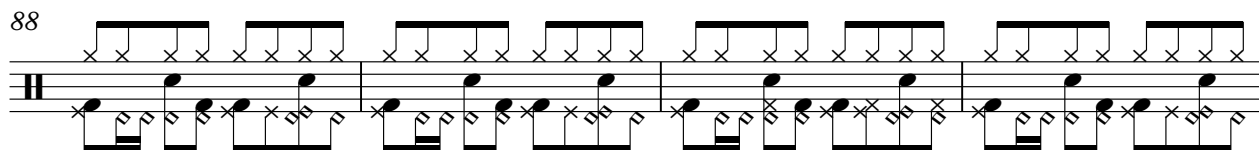
81



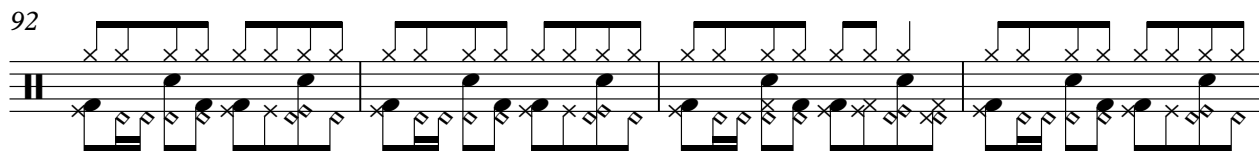
85



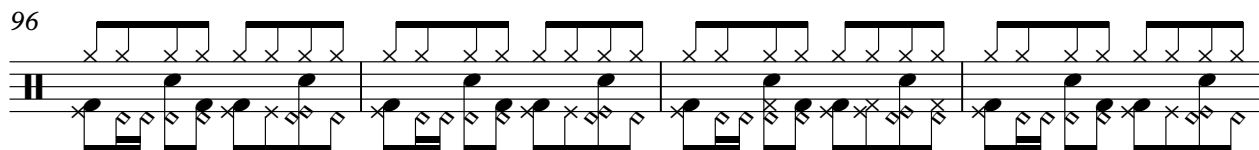
88



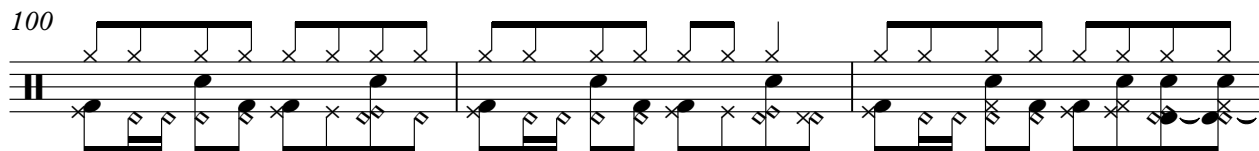
92



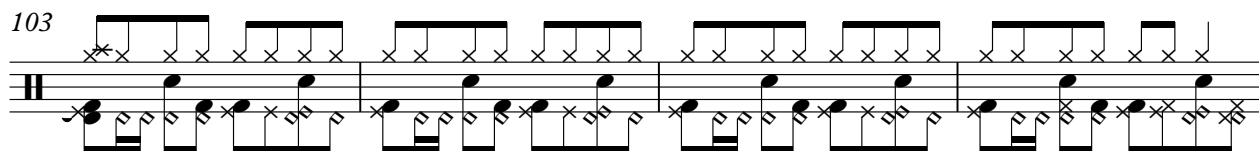
96



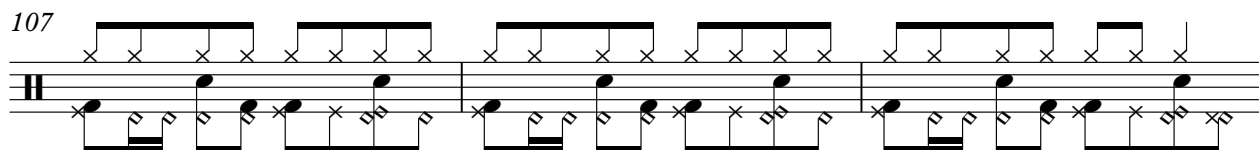
100



103



107



V.S.

DRUMS

110

113

117

123

132

141

147

G G Anderson - Jamaica Girl

BASS

♩ = 112,000893  
6

11  
16  
21  
26  
31  
36  
41  
46  
51

V.S.

Musical score for Bass, measures 56-101. The score is written in treble clef and consists of ten staves of music. The key signature is one sharp (F#), and the time signature is 4/4. The music features a consistent eighth-note bass line with various melodic accents and rests.

Measures 56-60: A steady eighth-note bass line in the key of D major (F#).  
Measure 61: A measure with a whole rest, followed by a melodic phrase starting on G4.  
Measures 62-65: Resumption of the eighth-note bass line.  
Measures 66-70: Continuation of the eighth-note bass line.  
Measures 71-75: Continuation of the eighth-note bass line.  
Measures 76-80: Continuation of the eighth-note bass line.  
Measures 81-85: Continuation of the eighth-note bass line.  
Measures 86-90: Continuation of the eighth-note bass line, with some notes marked with a flat (Bb).  
Measures 91-95: Continuation of the eighth-note bass line, with some notes marked with a flat (Bb).  
Measures 96-100: Continuation of the eighth-note bass line, with some notes marked with a flat (Bb).  
Measures 101: Continuation of the eighth-note bass line, with some notes marked with a flat (Bb).

106



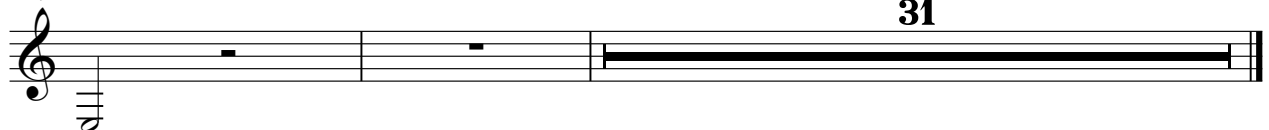
111



116



119



31



STEEL GTR

G G Anderson - Jamaica Girl

♩ = 112,000893

6

10

15 3 8 27

48

52 3

58 8 92

G G Anderson - Jamaica Girl

MUTED GTR

♩ = 112,000893

4

8

12

15

19

23

27

31

35

38

V.S.

MUTED GTR

41

44

48

52

56

59

63

66

70

74

MUTED GTR 3

77

81

85

88

91

94

97

100

103

106

V.S.

4

109

MUTED GTR

112

115

118

31

PIZZICATO

G G Anderson - Jamaica Girl

♩ = 112,000893

6

9

11

13

15

17

19

21

24

V.S.

26



28



30



32



34



36



38



40



42



44



PIZZICATO

46

48

50

52

54

56

58

60

62

64

V.S.





86

88

90

92

94

96

98

100

102

104

## PIZZICATO

106



SYN STRING

G G Anderson - Jamaika Girl

♩ = 112,000893

5

12

18

4

29

37

45

52

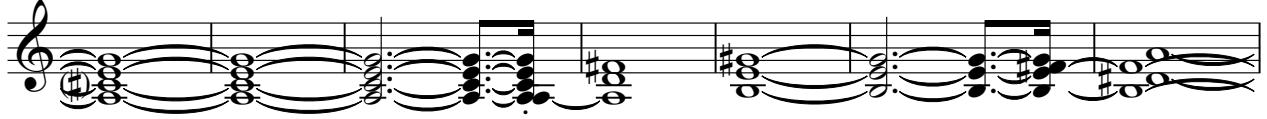
59

68

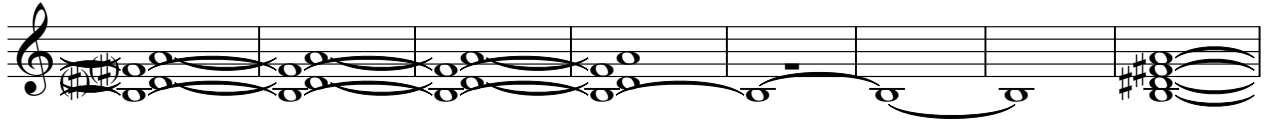
76

V.S.

83



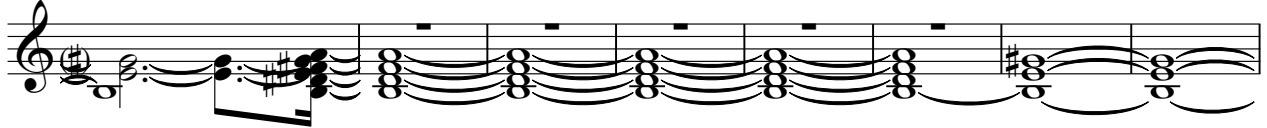
90



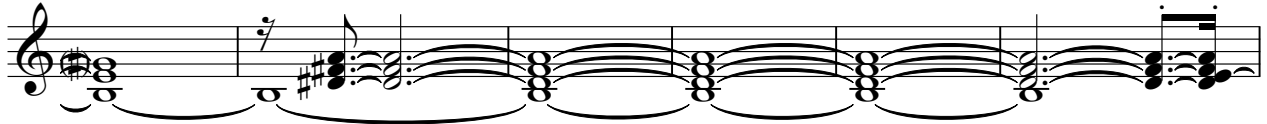
98



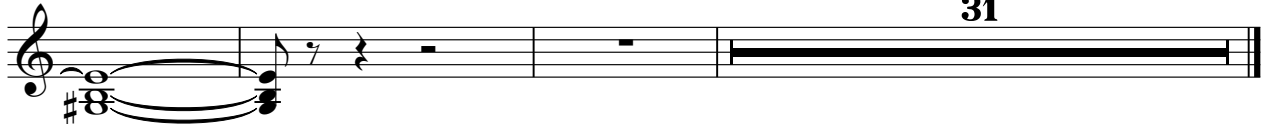
104



112



118



FANTASIA

G G Anderson - Jamaika Girl

♩ = 112,000893

9 3 8

23 2 2

30 2 3

38 2 3

46 3 3

55 7 3

68 2 2

75 3 3 3

86 3 3

94 3 3

2

FANTASIA

102

3

3

111

3

3

119

31