

Gauchesca - Rancheira de Carreirinha

$\text{♩} = 180,000183$

Rancheira de Carreirinha: B.Les

Arr. MIDI: Júlio C. Klafke

4

Rancheira de Carreirinha: B.Les

Arr. MIDI: Júlio C. Klafke

7

Rancheira de Carreirinha: B.Les

Arr. MIDI: Júlio C. Klafke

10

Rancheira de Carreirinha: B.Les

Arr. MIDI: Júlio C. Klafke

13

Rancheira de Carreirinha: B.Les

Arr. MIDI: Júlio C. Klafke

Unregistered

16

Rancheira de Carreirinha: B.Les

Arr. MIDI: Júlio C. Klafke

19

Rancheira de Carreirinha: B.Les

Arr. MIDI: Júlio C. Klafke

22

Rancheira de Carreirinha: B.Les

Arr. MIDI: Júlio C. Klafke

24

Rancheira de Carreirinha: B.Les

Arr. MIDI: Júlio C. Klafke

26

Rancheira de Carreirinha: B.Les

Arr. MIDI: Júlio C. Klafke

29

Rancheira de Carreirinha: B.Les

Arr. MIDI: Júlio C. Klafke

This system contains measures 29, 30, and 31. The upper staff is in treble clef and the lower staff is in bass clef. Measure 29 features a melodic line in the treble clef starting on a whole rest, followed by quarter notes G4, A4, B4, and C5. The bass clef staff has a descending eighth-note line: G3, F3, E3, D3, C3, B2, A2, G2. Measure 30 has a whole rest in the treble clef and a quarter note G2 in the bass clef. Measure 31 has a whole rest in the treble clef and a quarter note G2 in the bass clef.

32

Rancheira de Carreirinha: B.Les

Arr. MIDI: Júlio C. Klafke

This system contains measures 32, 33, and 34. The upper staff is in treble clef and the lower staff is in bass clef. Measure 32 has a melodic line in the treble clef: G4, F4, E4, D4, C4, B3, A3, G3. The bass clef staff has a descending eighth-note line: G3, F3, E3, D3, C3, B2, A2, G2. Measure 33 has a melodic line in the treble clef: G4, F4, E4, D4, C4, B3, A3, G3. The bass clef staff has a descending eighth-note line: G3, F3, E3, D3, C3, B2, A2, G2. Measure 34 has a melodic line in the treble clef: G4, F4, E4, D4, C4, B3, A3, G3. The bass clef staff has a descending eighth-note line: G3, F3, E3, D3, C3, B2, A2, G2.

35

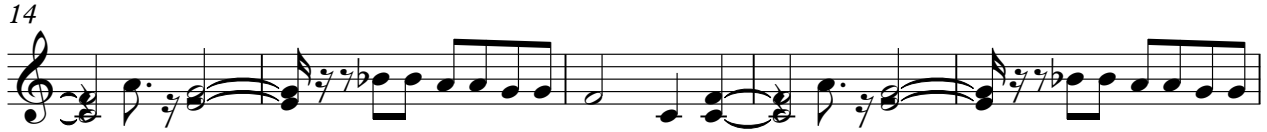
Rancheira de Carreirinha: B.Les

Arr. MIDI: Júlio C. Klafke

This system contains measures 35, 36, and 37. The upper staff is in treble clef and the lower staff is in bass clef. Measure 35 has a melodic line in the treble clef: G4, F4, E4, D4, C4, B3, A3, G3. The bass clef staff has a descending eighth-note line: G3, F3, E3, D3, C3, B2, A2, G2. Measure 36 has a melodic line in the treble clef: G4, F4, E4, D4, C4, B3, A3, G3. The bass clef staff has a descending eighth-note line: G3, F3, E3, D3, C3, B2, A2, G2. Measure 37 has a melodic line in the treble clef: G4, F4, E4, D4, C4, B3, A3, G3. The bass clef staff has a descending eighth-note line: G3, F3, E3, D3, C3, B2, A2, G2.

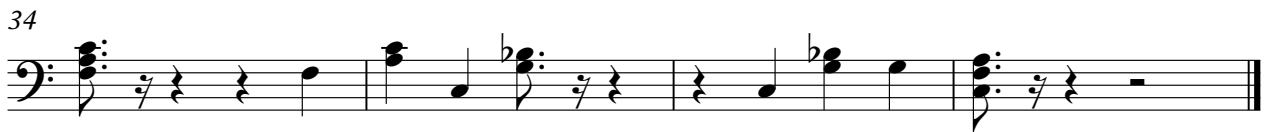
Rancheira de Carreirinha: B.Les Gauchesca - Rancheira de Carreirinha

♩ = 180,000183



Unregistered

♩ = 180,000183



Unregistered