

# Genesis - Blood On The Rooftops

♩ = 109,999908      ♩ = 109,999908

Guitar - Introduction

Guitar - Main Section

♩ = 109,999908      ♩ = 109,999908

Synth Strings

4

Guitar - Introduction

7

Guitar - Introduction

10

Guitar - Introduction

14

Guitar - Introduction

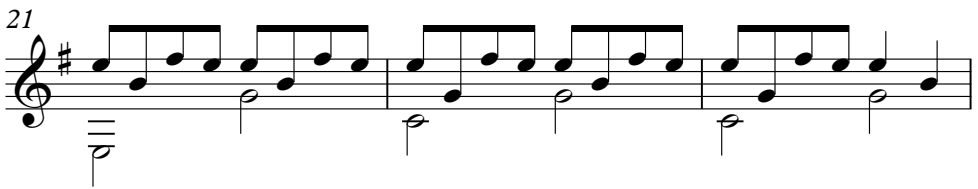
16

Guitar - Introduction

18

Guitar - Introduction

Guitar - Introduction



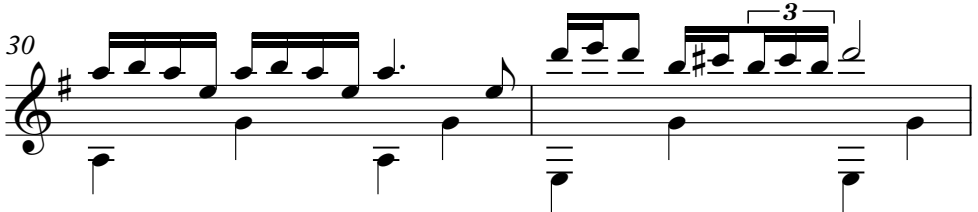
Guitar - Introduction




Guitar - Introduction



Guitar - Introduction



Guitar - Introduction



Guitar - Main Section



Bass Main Section



Guitar - Main Section



Bass Main Section



1'28.3"  
43.1,00  
First instrumental 5 bars

41

Guitar - Main Section

Bass Main Section

swishy bits

Syn. Str.

44

Guitar - Main Section

Bass Main Section

swishy bits

Syn. Str.

1'37.7"  
48.1,00  
vocals again

47

Guitar - Main Section

Bass Main Section

Syn. Str.

51

Guitar - Main Section

Bass Main Section

Syn. Str.

54

Guitar - Main Section

Bass Main Section

Syn. Str.

1'53.4"  
56.1,00  
Second Instrumental 7 bars

56

Alto Glock.

Guitar - Main Section

Bass Main Section

Syn. Str.

57

Alto Glock.

Guitar - Main Section

Bass Main Section

Syn. Str.

This system covers measures 57 to 58.5. The Alto Glock part features a rhythmic pattern of eighth notes with a sharp sign. The Guitar - Main Section part has a complex rhythmic pattern with many beamed notes. The Bass Main Section part has a single note with a sharp sign. The Syn. Str. part has a simple eighth-note melody.

58

Alto Glock.

Guitar - Main Section

Bass Main Section

Syn. Str.

This system covers measures 58.5 to 59.5. The Alto Glock part continues with eighth notes. The Guitar - Main Section part has a complex rhythmic pattern with many beamed notes. The Bass Main Section part has a single note with a sharp sign. The Syn. Str. part has a simple eighth-note melody.

59

Alto Glock.

Guitar - Main Section

Bass Main Section

Syn. Str.

This system covers measures 59.5 to 60.5. The Alto Glock part continues with eighth notes. The Guitar - Main Section part has a complex rhythmic pattern with many beamed notes. The Bass Main Section part has a single note with a sharp sign. The Syn. Str. part has a simple eighth-note melody.

60

Alto Glock.

Guitar - Main Section

Bass Main Section

Syn. Str.

61

Alto Glock.

Guitar - Main Section

Bass Main Section

Syn. Str.

2'18.9"  
63.1,00  
Chorus

62

Alto Glock.

Guitar - Main Section

Bass Main Section

Syn. Str.

65

Guitar - Main Section

Bass Main Section

Syn. Str.

68

Guitar - Main Section

Bass Main Section

Syn. Str.

71

Guitar - Main Section

Bass Main Section

Syn. Str.

74

Guitar - Main Section

Bass Main Section

Syn. Str.

77

Guitar - Main Section

Bass Main Section

Syn. Str.

80

Guitar - Main Section

Bass Main Section

Syn. Str.



84

Guitar - Main Section

Bass Main Section

Syn. Str.

88

Guitar - Main Section

Bass Main Section

Syn. Str.

92

Guitar - Main Section

Bass Main Section

Syn. Str.

95

Guitar - Main Section

Bass Main Section

Syn. Str.

98

Guitar - Main Section

Bass Main Section

Syn. Str.

101

Guitar - Main Section

Bass Main Section

Syn. Str.

105

Guitar - Main Section

Bass Main Section

Syn. Str.

108

Guitar - Main Section

Bass Main Section

Syn. Str.

109

Guitar - Main Section

Bass Main Section

Syn. Str.

111

Guitar - Main Section

Bass Main Section

Syn. Str.

114

Guitar - Main Section

Bass Main Section

Syn. Str.

117

Guitar - Main Section

Bass Main Section

Syn. Str.

120

Guitar - Main Section

Bass Main Section

Syn. Str.

123

Guitar - Main Section

Bass Main Section

Syn. Str.

126

Guitar - Main Section

Bass Main Section

Syn. Str.

129

Guitar - Main Section

Bass Main Section

Syn. Str.

132

Guitar - Main Section

Bass Main Section

Syn. Str.

135

Guitar - Main Section

Bass Main Section

Syn. Str.

138

Guitar - Main Section

Bass Main Section

Syn. Str.

141

Guitar - Main Section

Bass Main Section

Syn. Str.

144

Guitar - Main Section

Bass Main Section

Syn. Str.

5'13.7"  
146.1,00  
Chorus 2 end

147

Guitar - Main Section

Bass Main Section

Syn. Str.

151

Guitar - Main Section

Syn. Str.



Alto Glockenspiel

Genesis - Blood On The Rooftops

♩ = 109,999908      ♩ = 109,999908      ♩ = 115,000031

45

56

58

60

62

97

108

# Genesis - Blood On The Rooftops

## Guitar - Introduction

♩ = 109,999908    ♩ = 109,999908

6

9

13

16

19

23

27

30

33

2

4

7

4

2

Guitar - Introduction

46

4 5 7

63

26 7 4

102

5 3 43

Guitar - Main Section

Genesis - Blood On The Rooftops

♩ = 109,999908      ♩ = 109,999908      ♩ = 115,000031

14      19

36

41

46

51

55

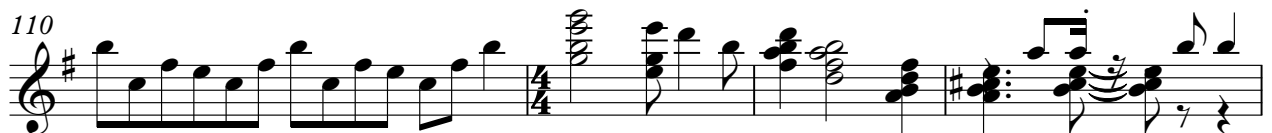
57

59

61

64

V.S.



114

119

123

128

133

138

142

147

151

# Genesis - Blood On The Rooftops

## Bass Main Section

♩ = 109,999908      ♩ = 109,999908      ♩ = 115,000031

14      19

37

44

51

57

62

67

73

79

86

V.S.

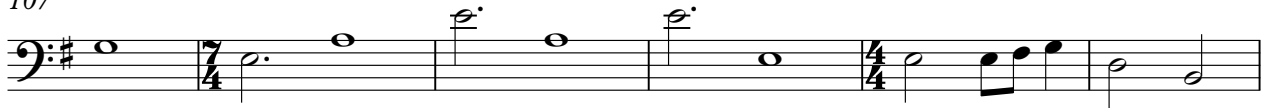
93



100



107



113



119



125



131



137



143



148





swishy bits

# Genesis - Blood On The Rooftops

♩ = 109,999908      ♩ = 109,999908      ♩ = 115,000031

14      21      5

43

4      5

56

7      26      7

98

4      5

108

3      43

# Genesis - Blood On The Rooftops

## Synth Strings

♩ = 109,999908      14      ♩ = 109,999908      21      ♩ = 115,000031      5

43

48

53

56

58

60

62

66

71

V.S.

## Synth Strings

75

80

85

90

95

100

105

108

110

114

Synth Strings

119

123

128

133

138

142

147

151