

George Gershwin - I got plenty o` nuttin`

Musical score for the first system of "I got plenty o` nuttin`". The score is in 2/2 time with a key signature of one sharp (F#). The tempo is marked as ♩ = 180,000183. The instruments are Trumpet, Melody, Banjo, Bass, and HighOrch. The Trumpet part features a melodic line with a slur over the first two measures and a fermata over the third measure. The Melody part is mostly silent with a few notes at the end. The Banjo and Bass parts provide a rhythmic accompaniment with eighth notes and chords. The HighOrch part has a melodic line with a slur and a fermata.



Musical score for the second system of "I got plenty o` nuttin`", starting at measure 5. The instruments are Trumpet, Melody, Banjo, and Bass. The Trumpet part has a melodic line with a slur and a fermata. The Melody part has a melodic line with a slur and a fermata. The Banjo and Bass parts provide a rhythmic accompaniment with eighth notes and chords.

2

9 $\text{♩} = 180,000183$

Trumpet

Melody

Banjo

Bass



13

Trumpet

Melody

Banjo

Bass



16

Trumpet

Melody

Banjo

Bass

19

Trumpet

Melody

Banjo

Bass



23

Trumpet

Piano

Melody

Banjo

Bass

LowOrch

27

Piano

Melody

Banjo

Bass

HighOrch

LowOrch



31

Melody

Bass

HighOrch

LowOrch

35

Melody

Banjo

Bass

HighOrch

LowOrch



39

Melody

Banjo

Bass



43

Melody

Banjo

Bass

HighOrch

LowOrch

47

Piano

Melody

Banjo

Bass

HighOrch

LowOrch

Detailed description: This system contains measures 47, 48, and 49. The Piano part has rests in measures 47 and 48, followed by a complex chordal texture in measure 49. The Melody part features a long note in measure 47, a quarter note in 48, and a half note in 49. The Banjo part has a rhythmic pattern of eighth notes and chords. The Bass part has a steady eighth-note pattern. The HighOrch and LowOrch parts have rests in measures 47 and 48, with the HighOrch playing chords in measure 49.



50

Trumpet

Piano

Melody

Banjo

Bass

HighOrch

LowOrch

3

Detailed description: This system contains measures 50, 51, and 52. The Trumpet part has rests in measures 50 and 51, followed by a half note in measure 52. The Piano part has a complex texture with a triplet in measure 50 and a long note in measure 51. The Melody part has a quarter note in measure 50 and rests in 51 and 52. The Banjo part has a rhythmic pattern of eighth notes and chords. The Bass part has a steady eighth-note pattern. The HighOrch part has a complex texture with a triplet in measure 50 and a long note in measure 51. The LowOrch part has a steady eighth-note pattern.

53

Trumpet

Melody

Banjo

Bass

HighOrch

LowOrch

Detailed description: This musical score block covers measures 53 through 56. The Trumpet part (measures 53-54) features a melodic line with a dotted quarter note, a half note, and a quarter note, all beamed together. The Melody part (measures 53-56) consists of a continuous eighth-note line. The Banjo part (measures 53-56) is a rhythmic accompaniment with chords and eighth notes. The Bass part (measures 53-56) provides a steady eighth-note bass line. The HighOrch and LowOrch parts are mostly silent, with some initial notes in measure 53.



57

Trumpet

Melody

Banjo

Bass

Detailed description: This musical score block covers measures 57 through 60. The Trumpet part (measures 57-58) has a melodic line with a dotted quarter note, a half note, and a quarter note, all beamed together. The Melody part (measures 57-60) continues with an eighth-note line. The Banjo part (measures 57-60) features a rhythmic accompaniment with chords and eighth notes. The Bass part (measures 57-60) provides a steady eighth-note bass line.

61

Trumpet

Melody

Banjo

Bass



65

Trumpet

Melody

Banjo

Bass

A.

Ped.

68

Trumpet

Melody

Banjo

Bass



72

Trumpet

Piano

Melody

Banjo

Bass

LowOrch

76

Piano

Melody

Banjo

Bass

HighOrch

LowOrch



80

Melody

Bass

HighOrch

LowOrch

84

Melody

Banjo

Bass

HighOrch

LowOrch



88

Melody

Banjo

Bass



92

Melody

Banjo

Bass

HighOrch

LowOrch

96

Trumpet

Piano

Melody

Banjo

Bass

HighOrch

LowOrch

100

Trumpet

Piano

Melody

Banjo

Bass

HighOrch

LowOrch

Detailed description: This is a multi-staff musical score for page 13, starting at measure 100. The score is arranged vertically with the following parts from top to bottom: Trumpet, Piano, Melody, Banjo, Bass, HighOrch, and LowOrch. The key signature is one sharp (F#) and the time signature is 3/4. The Trumpet part begins with a measure containing a whole note chord, which is then held over into the next two measures. The Piano part features a complex texture with chords and moving lines in both the treble and bass staves. The Melody part consists of a single line with a whole note chord in the first measure, followed by rests. The Banjo part is highly rhythmic, featuring a mix of eighth and sixteenth notes, with a triplet of eighth notes in the third measure. The Bass part provides a steady accompaniment with a mix of eighth and sixteenth notes. The HighOrch and LowOrch parts are arranged in a grand staff (treble and bass clefs) and provide harmonic support with chords and moving lines. The score concludes with a double bar line at the end of the third measure.

George Gershwin - I got plenty o` nuttin`

Piano

♩ = 180,000183 = 180,000183 ♩ = 180,000183

2 7 15

27

31 18 18 3

52 22

77 17

97

100

George Gershwin - I got plenty o` nuttin`

Melody

♩ = 180,000183 ♩ = 180,000183

2

8

14

19

25

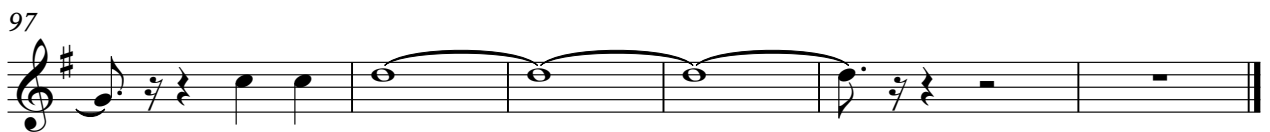
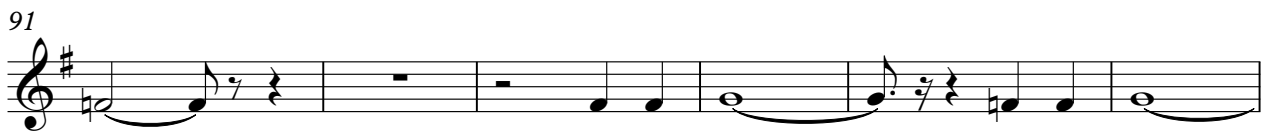
30

35

40

46

3



George Gershwin - I got plenty o` nuttin`

Banjo

The image displays a musical score for a Banjo arrangement of George Gershwin's "I got plenty o` nuttin`". The score is written in treble clef with a key signature of one sharp (F#) and a 2/4 time signature. It consists of ten staves of music, each beginning with a measure number (6, 11, 16, 21, 26, 31, 39, 44, 47). The tempo is indicated as ♩ = 180,000183. The music features a mix of chords and melodic lines, including a triplet of eighth notes at measure 16 and a four-measure rest at measure 31. The notation includes various rhythmic values such as eighth and sixteenth notes, and rests.

51



56



61



66



71



76



84



89



94



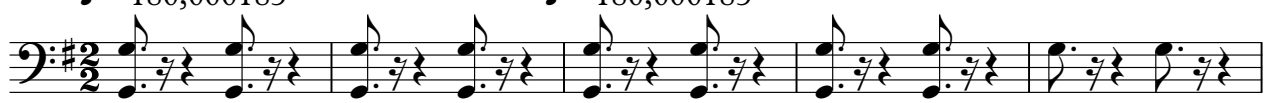
99



George Gershwin - I got plenty o` nuttin`

Bass

♩ = 180,000183 ♩ = 180,000183



6 ♩ = 180,000183



11



16



21



26



29



34



39



44



49



54



59



64



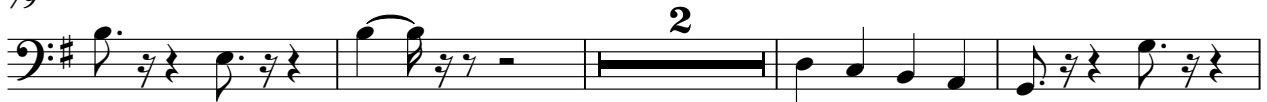
69



74



79



85



90



95



99



Alto

George Gershwin - I got plenty o` nuttin`

♪ = 180,000183 ♪ = 180,000183 ♪ = 180,000183

2 **7** **55**

65

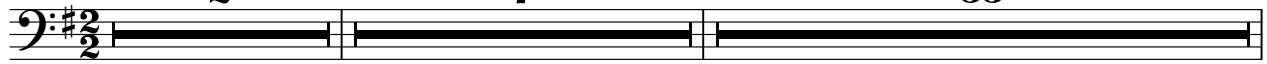
36

George Gershwin - I got plenty o` nuttin`

Pedals

♪ = 180,000183 ♪ = 180,000183 ♪ = 180,000183

2 **7** **55**



65



♩ = 180,000183 ♩ = 180,000183 ♩ = 180,000183

5 17

27

33

10

47

53

22

80

85

10

99

LowOrch

George Gershwin - I got plenty o` nuttin`

♩ = 180,000183 ♩ = 180,000183 ♩ = 180,000183

2 7 15

27

33 10

48 3

54 20

79

85 10

99