

George Michael - Don't Let The Sun Go Down On Me 1

♩ = 70,000237

FR.HORN

TRUMPET

TROMBONE

DRUMS

SYNVOX

SYNVOX

A.PIANO 1

MELODY

6

DRUMS

FRETLESS

A.PIANO 1

MELODY

10

DRUMS

A.PIANO 1

MELODY

13

DRUMS

A.PIANO 1

MELODY

17

DRUMS

A.PIANO 1

MELODY

21

DRUMS

FRETLESS

A.PIANO 1

MELODY

24

DRUMS

FRETLESS

A.PIANO 1

MELODY

27

DRUMS

FRETLESS

A.PIANO 1

MELODY

30

DRUMS

FRETLESS

SYNVOX

A.PIANO 1

MELODY



34

DRUMS

FRETLESS

SYNVOX

A.PIANO 1

MELODY



37

FR.HORN

TROMBONE

DRUMS

FRETLESS

SYNVOX

A.PIANO 1

MELODY

40

FR.HORN

TROMBONE

DRUMS

FRETLESS

SYNVOX

SYNVOX

A.PIANO 1

MELODY



42

FR.HORN

TROMBONE

DRUMS

FRETLESS

SYNVOX

SYNVOX

A.PIANO 1

MELODY

45

FR. HORN

TROMBONE

DRUMS

FRETLESS

SYNVOX

SYNVOX

A.PIANO 1

MELODY



48

TROMBONE

DRUMS

FRETLESS

SYNVOX

SYNVOX

A.PIANO 1

MELODY

51

DRUMS

FRETLESS

A.PIANO 1

MELODY



55

DRUMS

FRETLESS

A.PIANO 1

MELODY



58

DRUMS

FRETLESS

A.PIANO 1

MELODY



61

DRUMS

FRETLESS

A.PIANO 1

MELODY

64

DRUMS

FRETLESS

A.PIANO 1

MELODY

66

TRUMPET

TROMBONE

DRUMS

FRETLESS

A.PIANO 1

MELODY

68

FR.HORN

TRUMPET

TROMBONE

DRUMS

FRETLESS

SYNVOX

A.PIANO 1

MELODY

70

FR. HORN

TRUMPET

TROMBONE

DRUMS

FRETLESS

SYNVOX

SYNVOX

A.PIANO 1

MELODY

The musical score for page 8, measures 70 and 71, is arranged in a vertical staff format. The instruments and their parts are as follows:

- FR. HORN:** Treble clef, playing a whole note in measure 70 and another whole note in measure 71.
- TRUMPET:** Treble clef, playing a whole rest in measure 70, followed by a quarter rest, then eighth notes in measure 71, and a whole note in measure 72.
- TROMBONE:** Bass clef, playing a half note in measure 70, followed by a quarter note, and another half note in measure 71.
- DRUMS:** Drum set notation with a snare drum (S) and bass drum (B) pattern. The pattern consists of a snare on the first and third beats, and a bass drum on the second and fourth beats.
- FRETLESS:** Bass clef, playing a half note in measure 70, followed by a quarter note, and another half note in measure 71.
- SYNVOX (top):** Treble clef, playing a whole note chord in measure 70, followed by a whole note chord in measure 71.
- SYNVOX (bottom):** Treble clef, playing a whole rest in measure 70, followed by a quarter note, and another whole note in measure 71.
- A.PIANO 1:** Treble clef, playing a complex accompaniment with chords and moving lines.
- MELODY:** Treble clef, playing a melody with a triplet in measure 71.



72

FR. HORN

TRUMPET

TROMBONE

DRUMS

FRETLESS

SYNVOX

SYNVOX

A.PIANO 1

MELODY

Detailed description: This is a page of a musical score, page 9, starting at measure 72. The score is arranged in a grand staff with ten staves. The instruments are: FR. HORN (French Horn), TRUMPET, TROMBONE (Trombone), DRUMS, FRETLESS (Fretless Bass), SYNVOX (Synthesizer), A.PIANO 1 (Acoustic Piano), and MELODY. The FR. HORN part has a whole note in the first measure and a half note in the second. The TRUMPET part has a whole rest in the first measure and a melodic line in the second. The TROMBONE part has a whole note in the first measure and a half note in the second. The DRUMS part has a complex rhythmic pattern with snare and bass drum hits. The FRETLESS part has a melodic line with slurs. The SYNVOX part has a sustained chord in the first measure and a melodic line in the second. The A.PIANO 1 part has a complex accompaniment with chords and arpeggios. The MELODY part has a melodic line with slurs and rests.

75

FR. HORN

TRUMPET

TROMBONE

DRUMS

FRETLESS

SYNVOX

SYNVOX

A.PIANO 1

MELODY

78

FR. HORN  
TRUMPET  
TROMBONE  
DRUMS  
FRETLESS  
SYNVOX  
SYNVOX  
A.PIANO 1  
MELODY

Detailed description: This system contains measures 78, 79, and 80. The FR. HORN part has rests in measures 78 and 79, then enters in measure 80 with a quarter note G4, quarter note A4, quarter note B4, and quarter note C5. The TRUMPET part has quarter notes G4, A4, B4, C5 in measure 78, quarter notes G4, A4, B4, C5 in measure 79, and quarter notes G4, A4, B4, C5 in measure 80. The TROMBONE part has quarter notes G3, A3, B3, C4 in measure 78, quarter notes G3, A3, B3, C4 in measure 79, and quarter notes G3, A3, B3, C4 in measure 80. The DRUMS part features a consistent rhythmic pattern of eighth notes with accents. The FRETLESS part has quarter notes G3, A3, B3, C4 in measure 78, quarter notes G3, A3, B3, C4 in measure 79, and quarter notes G3, A3, B3, C4 in measure 80. The two SYNVOX parts play chords: G3-A3-B3-C4 in measure 78, G3-A3-B3-C4 in measure 79, and G3-A3-B3-C4 in measure 80. The A.PIANO 1 part has chords: G3-A3-B3-C4 in measure 78, G3-A3-B3-C4 in measure 79, and G3-A3-B3-C4 in measure 80. The MELODY part has quarter notes G4, A4, B4, C5 in measure 78, quarter notes G4, A4, B4, C5 in measure 79, and quarter notes G4, A4, B4, C5 in measure 80.



81

FR. HORN  
TRUMPET  
TROMBONE  
DRUMS  
FRETLESS  
SYNVOX  
A.PIANO 1  
MELODY

Detailed description: This system contains measures 81, 82, and 83. The FR. HORN part has a whole note G4 in measure 81, a whole note A4 in measure 82, and a whole note B4 in measure 83. The TRUMPET part has a whole note G4 in measure 81, a whole note A4 in measure 82, and a whole note B4 in measure 83. The TROMBONE part has a whole note G3 in measure 81, a whole note A3 in measure 82, and a whole note B3 in measure 83. The DRUMS part features a consistent rhythmic pattern of eighth notes with accents. The FRETLESS part has quarter notes G3, A3, B3, C4 in measure 81, quarter notes G3, A3, B3, C4 in measure 82, and quarter notes G3, A3, B3, C4 in measure 83. The SYNVOX part has a whole note G3-A3-B3-C4 chord in measure 81, a whole note G3-A3-B3-C4 chord in measure 82, and a whole note G3-A3-B3-C4 chord in measure 83. The A.PIANO 1 part has chords: G3-A3-B3-C4 in measure 81, G3-A3-B3-C4 in measure 82, and G3-A3-B3-C4 in measure 83. The MELODY part has quarter notes G4, A4, B4, C5 in measure 81, quarter notes G4, A4, B4, C5 in measure 82, and quarter notes G4, A4, B4, C5 in measure 83.

84

FR. HORN

TRUMPET

TROMBONE

DRUMS

FRETLESS

SYNVOX

SYNVOX

A.PIANO 1

MELODY

Detailed description of the musical score: The score is for page 12, starting at measure 84. It features ten staves. The FR. HORN staff (top) has a melodic line starting with a slur over two measures. The TRUMPET and TROMBONE staves are mostly empty, indicating rests. The DRUMS staff shows a complex rhythmic pattern with 'x' marks above the notes, suggesting cymbal or snare hits. The FRETLESS staff has a simple melodic line. The two SYNVOX staves have sustained chords. The A.PIANO 1 staff has a complex accompaniment with many beamed notes. The MELODY staff has a simple melodic line with a triplet.

86

FR. HORN

TRUMPET

TROMBONE

DRUMS

FRETLESS

SYNVOX

SYNVOX

A.PIANO 1

MELODY

Detailed description: This page of a musical score covers measures 86, 87, and 88. The score is arranged in a multi-staff format. At the top left, the measure number '86' is indicated. The instruments are listed on the left side of the staves: FR. HORN (French Horn), TRUMPET, TROMBONE (Trombone), DRUMS, FRETLESS (Fretless Bass), SYNVOX (Synthesizer), A.PIANO 1 (Acoustic Piano 1), and MELODY. The FR. HORN part begins with a melodic line in measure 86, followed by rests in 87 and 88. The TRUMPET and TROMBONE parts have whole notes in measure 86 and rests in 87 and 88. The DRUMS part features a consistent rhythmic pattern of eighth notes with 'x' marks above them, indicating cymbal hits. The FRETLESS part has a melodic line with eighth notes and rests. The SYNVOX parts have sustained chords in measure 86 and rests in 87 and 88. The A.PIANO 1 part has a complex accompaniment with chords and moving lines. The MELODY part has a simple melodic line with eighth notes and rests.

89

FR. HORN

TRUMPET

TROMBONE

DRUMS

FRETLESS

SYNVOX

SYNVOX

A.PIANO 1

MELODY

Detailed description: This page of a musical score contains measures 89, 90, and 91. The score is arranged in a vertical stack of staves. The top staff is for the French Horn (FR. HORN), the second for Trumpet (TRUMPET), the third for Trombone (TROMBONE), the fourth for Drums (DRUMS), the fifth for Fretless Bass (FRETLESS), the sixth and seventh for Synvox (SYNVOX), the eighth for Acoustic Piano 1 (A.PIANO 1), and the bottom staff for the Melody (MELODY). Measure 89 begins with a treble clef and a 7/8 time signature. The French Horn and Trombone parts have a key signature change to one flat (B-flat) in measure 90. The Drums part features a consistent rhythmic pattern of eighth notes with 'x' marks above them, indicating cymbal hits. The Fretless part has a triplet of eighth notes in measure 91. The Piano part has a complex accompaniment with chords and moving lines. The Melody part is a single-line melodic line.

92

FR. HORN

TRUMPET

TROMBONE

DRUMS

FRETLESS

SYNVOX

SYNVOX

A.PIANO 1

MELODY



95 = 69, 0068, 1102, 2500, 0071, 004880, - 6, 12, 0000, 0264, 08, 60, 0000, 530, 58, 0700, 0024, 15, 00, 0000, 0550, 0000, 0700, 0000

FR. HORN

TRUMPET

TROMBONE

DRUMS

FRETLESS

A.PIANO 1

97

FR. HORN

TRUMPET

TROMBONE

DRUMS

FRETLESS

A. PIANO 1

Detailed description of the musical score: The score is for page 16, starting at measure 97. It features six staves: FR. HORN (French Horn), TRUMPET, TROMBONE (Trombone), DRUMS, FRETLESS (Fretless Bass), and A. PIANO 1 (Acoustic Piano 1). The FR. HORN, TRUMPET, and TROMBONE parts begin with a long note in measure 97, followed by rests in measures 98 and 99. The FRETLESS part also begins with a long note in measure 97, followed by rests in measures 98 and 99. The DRUMS part has a single note in measure 97, followed by rests in measures 98 and 99. The A. PIANO 1 part has a single note in measure 97, followed by rests in measures 98 and 99. The key signature is one sharp (F#) and the time signature is 4/4.



♩ = 70,000237

35

42

22

70

77

2

84

89

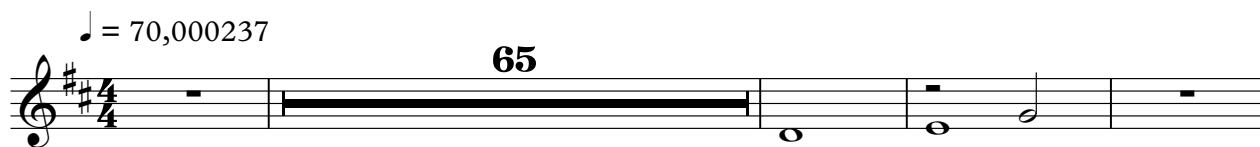
94

TRUMPET

George Michael - Don't Let The Sun Go Down On Me 1

♩ = 70,000237

65



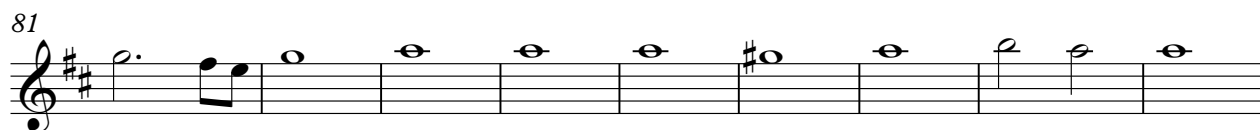
70



76



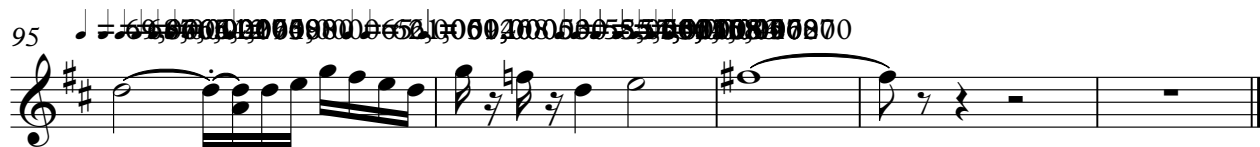
81



90



95





DRUMS

George Michael - Don't Let The Sun Go Down On Me 1

♩ = 70,000237

4/4

Measures 1-6: A steady 4/4 drum pattern consisting of a bass drum on the 1st and 3rd beats and a snare drum on the 2nd and 4th beats. The notation uses 'x' for snare and 'r' for bass drum.

7

Measures 7-12: Continuation of the steady 4/4 drum pattern from measures 1-6.

13

Measures 13-18: Continuation of the steady 4/4 drum pattern. Measure 13 features a hi-hat on the 4th beat.

19

Measures 19-23: Continuation of the steady 4/4 drum pattern. Measures 19 and 21 feature a hi-hat on the 4th beat.

24

Measures 24-28: Continuation of the steady 4/4 drum pattern. Measures 24, 26, and 28 feature a hi-hat on the 4th beat.

29

Measures 29-33: Continuation of the steady 4/4 drum pattern. Measures 29, 31, and 33 feature a hi-hat on the 4th beat.

34

Measures 34-37: Continuation of the steady 4/4 drum pattern. Measures 34, 36, and 37 feature a hi-hat on the 4th beat.

38

Measures 38-40: Continuation of the steady 4/4 drum pattern. Measures 38 and 40 feature a hi-hat on the 4th beat.

41

Measures 41-43: Continuation of the steady 4/4 drum pattern. Measures 41 and 43 feature a hi-hat on the 4th beat.

44

Measures 44-46: Continuation of the steady 4/4 drum pattern. Measures 44 and 46 feature a hi-hat on the 4th beat.

V.S.

DRUMS

48

51

54

57

60

63

66

68

70

73



FRETLESS

George Michael - Don't Let The Sun Go Down On Me 1

♩ = 70,000237

5 16

Musical notation for measures 1-16 in bass clef, 4/4 time. Measure 1 has a whole rest. Measure 2 has a whole rest. Measure 3 has a quarter rest followed by an eighth note G2, quarter note F2, eighth note E2, quarter note D2. Measure 4 has a quarter note C2, quarter note B1, quarter note A1, quarter note G1. Measure 5 has a quarter note F1, quarter note E1, quarter note D1, quarter note C1. Measure 6 has a quarter note B0, quarter note A0, quarter note G0, quarter note F0. Measure 7 has a quarter note E0, quarter note D0, quarter note C0, quarter note B0. Measure 8 has a quarter note A0, quarter note G0, quarter note F0, quarter note E0. Measure 9 has a quarter note D0, quarter note C0, quarter note B0, quarter note A0. Measure 10 has a quarter note G0, quarter note F0, quarter note E0, quarter note D0. Measure 11 has a quarter note C0, quarter note B0, quarter note A0, quarter note G0. Measure 12 has a quarter note F0, quarter note E0, quarter note D0, quarter note C0. Measure 13 has a quarter note B0, quarter note A0, quarter note G0, quarter note F0. Measure 14 has a quarter note A0, quarter note G0, quarter note F0, quarter note E0. Measure 15 has a quarter note D0, quarter note C0, quarter note B0, quarter note A0. Measure 16 has a quarter note G0, quarter note F0, quarter note E0, quarter note D0.

25

Musical notation for measures 17-24 in bass clef, 4/4 time. Measure 17 has a quarter note G0, quarter note F0, quarter note E0, quarter note D0. Measure 18 has a quarter note C0, quarter note B0, quarter note A0, quarter note G0. Measure 19 has a quarter note F0, quarter note E0, quarter note D0, quarter note C0. Measure 20 has a quarter note B0, quarter note A0, quarter note G0, quarter note F0. Measure 21 has a quarter note A0, quarter note G0, quarter note F0, quarter note E0. Measure 22 has a quarter note D0, quarter note C0, quarter note B0, quarter note A0. Measure 23 has a quarter note G0, quarter note F0, quarter note E0, quarter note D0. Measure 24 has a quarter note C0, quarter note B0, quarter note A0, quarter note G0, with a triplet of eighth notes G0, F0, E0.

31

Musical notation for measures 25-30 in bass clef, 4/4 time. Measure 25 has a quarter note G0, quarter note F0, quarter note E0, quarter note D0. Measure 26 has a quarter note C0, quarter note B0, quarter note A0, quarter note G0. Measure 27 has a quarter note F0, quarter note E0, quarter note D0, quarter note C0. Measure 28 has a quarter note B0, quarter note A0, quarter note G0, quarter note F0. Measure 29 has a quarter note A0, quarter note G0, quarter note F0, quarter note E0. Measure 30 has a quarter note D0, quarter note C0, quarter note B0, quarter note A0.

37

Musical notation for measures 31-36 in bass clef, 4/4 time. Measure 31 has a quarter note G0, quarter note F0, quarter note E0, quarter note D0. Measure 32 has a quarter note C0, quarter note B0, quarter note A0, quarter note G0. Measure 33 has a quarter note F0, quarter note E0, quarter note D0, quarter note C0. Measure 34 has a quarter note B0, quarter note A0, quarter note G0, quarter note F0. Measure 35 has a quarter note A0, quarter note G0, quarter note F0, quarter note E0. Measure 36 has a quarter note D0, quarter note C0, quarter note B0, quarter note A0.

41

Musical notation for measures 37-40 in bass clef, 4/4 time. Measure 37 has a quarter note G0, quarter note F0, quarter note E0, quarter note D0. Measure 38 has a quarter note C0, quarter note B0, quarter note A0, quarter note G0. Measure 39 has a quarter note F0, quarter note E0, quarter note D0, quarter note C0. Measure 40 has a quarter note B0, quarter note A0, quarter note G0, quarter note F0.

45

Musical notation for measures 41-44 in bass clef, 4/4 time. Measure 41 has a quarter note G0, quarter note F0, quarter note E0, quarter note D0. Measure 42 has a quarter note C0, quarter note B0, quarter note A0, quarter note G0. Measure 43 has a quarter note F0, quarter note E0, quarter note D0, quarter note C0. Measure 44 has a quarter note B0, quarter note A0, quarter note G0, quarter note F0, with a triplet of eighth notes G0, F0, E0.

48

2

Musical notation for measures 45-47 in bass clef, 4/4 time. Measure 45 has a quarter note G0, quarter note F0, quarter note E0, quarter note D0. Measure 46 has a quarter note C0, quarter note B0, quarter note A0, quarter note G0. Measure 47 has a quarter note F0, quarter note E0, quarter note D0, quarter note C0, followed by a whole rest.

52



57



61



66



70



74



79



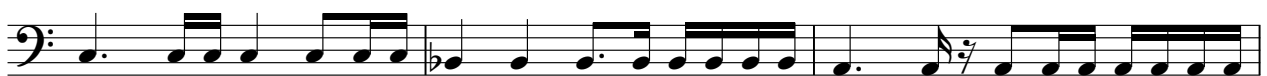
84



88



93



♩ = 698 700 702 704 706 708 710 712 714 716 718 720 722 724 726 728 730 732 734 736 738 740 742 744 746 748 750 752 754 756 758 760 762 764 766 768 770 772 774 776 778 780 782 784 786 788 790 792 794 796 798 800









George Michael - Don't Let The Sun Go Down On Me 1

A.PIANO 1

♩ = 70,000237

5

9

13

16

21

25

28

32

36

V.S.

Musical score for A.PIANO 1, measures 39-70. The score is written in treble clef with a key signature of one sharp (F#). It features a complex texture with multiple voices, including a prominent melodic line in the upper register and dense chordal accompaniment in the lower register. The piece includes several triplet markings (indicated by a '3' over a group of notes) and various rhythmic patterns such as eighth and sixteenth notes. The notation includes stems, beams, and various accidentals (sharps, naturals, and flats) throughout the measures.

73

76

79

83

86

89

92

95

George Michael - Don't Let The Sun Go Down On Me 1

MELODY

♩ = 70,000237

5

11

16

21

27

32

37

41

45

48

3

