



19

Melodie

J. Gtr.

A. Bass

Detailed description: This system covers measures 19-22. The Melodie staff (treble clef, key signature of two sharps) features a melodic line with a long note in measure 19, followed by eighth notes and a quarter note in measure 20, and eighth notes in measures 21 and 22. The J. Gtr. staff (treble clef) shows fret numbers for strings T, A, and B. The A. Bass staff (bass clef, key signature of two sharps) provides a bass line with quarter notes and eighth notes.

23

Melodie

J. Gtr.

A. Bass

Detailed description: This system covers measures 23-27. The Melodie staff continues with eighth notes and quarter notes. The J. Gtr. staff shows fret numbers, including some with question marks. The A. Bass staff continues with a steady bass line.

28

Melodie

J. Gtr.

A. Bass

Detailed description: This system covers measures 28-32. The Melodie staff features a melodic line with eighth notes and quarter notes, ending with a quarter note in measure 32. The J. Gtr. staff shows fret numbers, including some with question marks. The A. Bass staff continues with a steady bass line.

33

Melodie

J. Gtr.

A. Bass

Detailed description: This system covers measures 33-36. The Melodie staff continues with eighth notes and quarter notes. The J. Gtr. staff shows fret numbers. The A. Bass staff continues with a steady bass line.



57

Melodie

J. Gtr.

A. Bass

Detailed description: This system covers measures 57-61. The Melodie line is in treble clef with a key signature of two sharps (F# and C#). It features a sequence of eighth notes, followed by a half note, and ends with a quarter note. The J. Gtr. part consists of two staves (T and B) with fret numbers: T (0, 2, 4, 6, 8, 9, 11) and B (0, 0, 0, 0, 0, 0, 0, 2, 0, 4, 1, 2, 4, 0, 2, 4, 6, 8, 9, 11). The A. Bass part is in bass clef with notes: G2, F#2, E2, D2, C#2, B1, A1, G1.

62

Melodie

J. Gtr.

A. Bass

Detailed description: This system covers measures 62-66. The Melodie line continues with eighth notes and quarter notes. The J. Gtr. part has fret numbers: T (0, 2, 4, 6, 8, 9, 11) and B (4, 0, 4, 4, 6, 4, 2, 4, 2, 4, 2, 4, 4, 2, 4, 4, 4, 4, 4, 4, 0, 0, 4, 4). The A. Bass part continues with notes: G2, F#2, E2, D2, C#2, B1, A1, G1.

67

Melodie

J. Gtr.

A. Bass

Detailed description: This system covers measures 67-71. The Melodie line features a half note followed by eighth notes. The J. Gtr. part has fret numbers: T (0, 0, 0, 0, 4, 4, 4, 4, 0, 2, 4, 5, 4, 0, 2) and B (4, 0, 4, 4, 0, 4, 4, 4, 4, 4, 4, 4, 4, 4, 4, 4, 4, 4, 4, 4, 2, 2, 2, 2, 0, 0, 4, 4). The A. Bass part continues with notes: G2, F#2, E2, D2, C#2, B1, A1, G1.

72

Melodie

J. Gtr.

A. Bass

Detailed description: This system covers measures 72-76. The Melodie line starts with a quarter note followed by eighth notes. The J. Gtr. part has fret numbers: T (1, 2, 4, 1, 1) and B (2, 1, 4, 1, 0, 0, 0, 0, 4, 2, 1, 4, 0, 0, 4, 2, 1, 4, 1, 1, 4, 4, 4, 4, 4, 4). The A. Bass part continues with notes: G2, F#2, E2, D2, C#2, B1, A1, G1.



97

Melodie

J. Gtr.

A. Bass

Detailed description: This system covers measures 97-101. The Melodie staff is in treble clef with a key signature of two sharps (F# and C#). It features a series of eighth notes in the first two measures, followed by a half note and a quarter note in the third measure, and another eighth-note sequence in the fourth measure. The J. Gtr. staff shows a sequence of chords and fingerings: 0 0 0 0 0, 2 0, 0 0 2 0, 4 1 2 4 0, and 2 4 6 8 9 11. The A. Bass staff has a bass line with notes G2, F#2, E2, D2, C#2, and B1.

102

Melodie

J. Gtr.

A. Bass

Detailed description: This system covers measures 102-106. The Melodie staff continues with eighth-note patterns and a half note. The J. Gtr. staff has chords and fingerings: 4 0, 4 8 4 6 4, 2 4 2 4 2, 4 4 2 4, 4 4 4 4 4, 0, and 0. The A. Bass staff continues with a bass line of notes G2, F#2, E2, D2, C#2, and B1.

107

Melodie

J. Gtr.

A. Bass

Detailed description: This system covers measures 107-111. The Melodie staff features a half note followed by eighth notes. The J. Gtr. staff has chords and fingerings: 0, 0, 0, 0, 4 4 4 4 4, 4 4 0, 2 4 5 4 0 2, 4 0 4 4, 0, 4 4 4 4 4, 4 4 0 4, 2 2 2 2, 4 0 4 4, 4 4. The A. Bass staff continues with a bass line of notes G2, F#2, E2, D2, C#2, and B1.

112

Melodie

J. Gtr.

A. Bass

Detailed description: This system covers measures 112-116. The Melodie staff has a half note followed by eighth notes. The J. Gtr. staff has chords and fingerings: 1 2 4 1 1, 2 4 1, 0 0 0 0 4, 2 1 4 0 0 4, 2 1 4, 4 4 4, 4 4, 4 4, 4 4, 1 4 1, 4 4. The A. Bass staff continues with a bass line of notes G2, F#2, E2, D2, C#2, and B1.

117

Melodie

J. Gtr.

A. Bass

Detailed description: This system covers measures 117 to 121. The Melodie staff is in treble clef with a key signature of two sharps (F# and C#). It features a sequence of eighth notes, followed by a half note, and ends with a quarter note. The J. Gtr. staff shows a sequence of chords and fingerings: 0 0 0 0 0, 2 0, 0 0 2 0, 4 1 2 4 0, 2 4 6 8 9 11, and 0 0. The A. Bass staff is in bass clef with a key signature of two sharps, featuring a sequence of eighth notes and quarter notes.

122

Melodie

J. Gtr.

A. Bass

Detailed description: This system covers measures 122 to 126. The Melodie staff continues with eighth notes and quarter notes. The J. Gtr. staff shows chords and fingerings: 4 0, 4 8 4 6 4, 2 4 2 4 2, 4 4 2 4 4 4 4 4 4 4, 0, and 0. The A. Bass staff continues with eighth and quarter notes.

127

Melodie

J. Gtr.

A. Bass

Detailed description: This system covers measures 127 to 131. The Melodie staff features a sequence of eighth notes and quarter notes. The J. Gtr. staff shows chords and fingerings: 0, 0, 0, 0, 4 4 4 4 4 4, 4 4 0, 2 4 5 4 0 2, 4 0 4 4, 0, 4 4 4 4 4, 4 4 0 4, 2 2 2 2, 0 0, and 4. The A. Bass staff continues with eighth and quarter notes.

132

Melodie

J. Gtr.

A. Bass

Detailed description: This system covers measures 132 to 136. The Melodie staff features a sequence of eighth notes and quarter notes. The J. Gtr. staff shows chords and fingerings: 1 2 4 1 1, 2 4 1, 0 0 0 0 4, 2 1 4 0 0 4, 2 1 4, and 4 4. The A. Bass staff continues with eighth and quarter notes.





157

Melodie

J. Gtr.

T		2 0		1 2 4	0	2 4 6	8 9 11
A	0 0 0 0 0	0 0 2 0	4 1	4 4 4 4	4 1	1	0 0
B	4 9	9 9	4 8 ?	4 8 ?	4 2	2 2 2	0 9

A. Bass

162

Melodie

J. Gtr.

T						0	0
A	4 0	4 4 6 4	2 4 2	4 4 2	4 4 4 4 4	0	0
B	8 4 ?	6 4 ?	4 4	7 7 ?	4 5 5	4 4	4 4

A. Bass

167

Melodie

J. Gtr.

T	0	0	0	0	4	0	2 4 5	4 0 2
A	4 0 4 4	0	4 4 4 4 4	4 4 4 4 4	4 4 0	4	2 2 2 2	
B	0 5	4 7	4 7	5 5	5 4 5	0 0	2 0 0	

A. Bass

172

Melodie

J. Gtr.

T	1 2 4	1 1					
A	2 4 1	0 0 0 0 4	2 4	0 0 4	2 4		
B	4 4	2 2 4	4 4	1 1 2 2	4 4	2 4	1 1

A. Bass

177

Melodie

J. Gtr.

T		2 0		1 2 4	0	2 4 6	8 9 11	
A	0 0 0 0 0	0 0 2 0	4 1	4 4 4 4	4 1	1	2 2 2 0	0
B	4 9	9 9	4 8 ?	4 8 ?	4 2	2	4 4 ?	9

A. Bass

182

Melodie

J. Gtr.

T						0		0
A	4 0	4 4 6 4	2 4 2	4 4 2	4 4 4 4 4	5 5	4 4	4
B	8 4 ?	6 4 ?	4 4	7 7 ?	7 7	5 5	7 7	7

A. Bass

187

Melodie

J. Gtr.

T	0	0	0	0	4	0	2 4 5	4 0 2
A	4 0 4 4	0	4 4 4 4 4	4 4 4 4	4 4 0	4	2 2 2 2	2
B	0 5	4 7	4 7	5 5	5 5	5 5	0 0 0 0	4 4

A. Bass

192

Melodie

J. Gtr.

T	1 2 4	1 1						
A	2 4 1	0 0 0 0 4	2 4	0 0 4	2 4	2 4	2 4	1 4
B	4 4	4 4	4 4	4 4	4 4	4 4	4 4	4 4

A. Bass

197

Melodie

J. Gtr.

A. Bass

202

Melodie

J. Gtr.

A. Bass

207

Melodie

J. Gtr.

A. Bass

212

Melodie

J. Gtr.

A. Bass

217

Melodie

J. Gtr.

A. Bass

Detailed description: This system covers measures 217 to 221. The Melodie line is in treble clef with a key signature of two sharps (F# and C#). It features a series of eighth and quarter notes, with a prominent slur over measures 219 and 220. The J. Gtr. part consists of two staves (T and B) with fret numbers and some question marks. The A. Bass part is in bass clef with a key signature of two sharps, featuring a simple bass line of quarter notes.

222

Melodie

J. Gtr.

A. Bass

Detailed description: This system covers measures 222 to 226. The Melodie line continues with eighth and quarter notes. The J. Gtr. part shows more complex fretting with numbers like 4, 8, 6, 4, 2, 4, 2, 4, 4, 4, 4, 4, 4, 5, 5, 4, 4. The A. Bass part continues with a steady bass line.

227

Melodie

J. Gtr.

A. Bass

Detailed description: This system covers measures 227 to 231. The Melodie line features a mix of eighth and quarter notes. The J. Gtr. part includes fret numbers such as 0, 4, 0, 4, 4, 5, 4, 4, 4, 4, 4, 4, 4, 4, 4, 0, 2, 4, 5, 4, 0, 2. The A. Bass part continues with a consistent bass line.

232

Melodie

J. Gtr.

A. Bass

Detailed description: This system covers measures 232 to 236. The Melodie line starts with a slur over the first two measures. The J. Gtr. part shows fret numbers like 1, 2, 4, 1, 1, 2, 4, 1, 1, 0, 0, 0, 0, 4, 2, 1, 4, 0, 0, 4, 2, 1, 4, 1. The A. Bass part continues with a steady bass line.

237

Melodie

J. Gtr.

A. Bass

241

Melodie

J. Gtr.

A. Bass

# Georges Brasens - A L`ombre Des Maris

Melodie

$\text{♩} = 180,000183$

4

10

17

23

30

37

43

50

57

63

V.S.







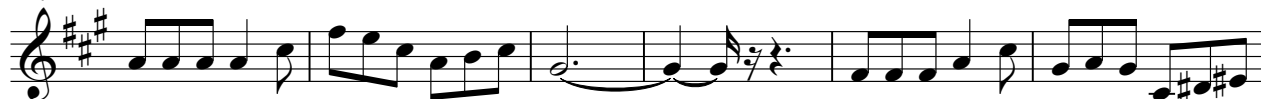
203



210



217



223



230



237



241







101

Tablature for exercise 101. Treble clef, 6/8 time signature. Staff lines T, A, B. Fingering: 2 2 2 0 0 | 4 0 | 4 4 6 4 1 | 2 4 2 4 0 | 4 2 2 4 | 4 4 4 4 4 | 0

106

Tablature for exercise 106. Treble clef, 6/8 time signature. Staff lines T, A, B. Fingering: 0 | 0 | 0 | 0 | 0 4 4 0 0 | 4 4 4 4 4 | 4 4 4 4 4 | 5 5 5

111

Tablature for exercise 111. Treble clef, 6/8 time signature. Staff lines T, A, B. Fingering: 2 4 5 4 0 2 | 1 2 4 1 1 | 0 0 0 0 4 | 2 1 4 | 0 2 0 4

116

Tablature for exercise 116. Treble clef, 6/8 time signature. Staff lines T, A, B. Fingering: 2 1 4 1 | 0 0 0 0 0 | 0 0 2 0 | 4 1 1 2 4 | 2 4 6 8 9 11

121

Tablature for exercise 121. Treble clef, 6/8 time signature. Staff lines T, A, B. Fingering: 2 2 2 0 0 | 4 0 | 4 4 6 4 1 | 2 4 2 4 2 | 4 2 2 4 | 4 4 4 4 4 | 0

126

Tablature for exercise 126. Treble clef, 6/8 time signature. Staff lines T, A, B. Fingering: 0 | 0 | 0 | 0 | 0 4 4 0 0 | 4 0 4 4 | 4 4 4 4 4 | 4 4 4 4 4 | 0

131

Tablature for exercise 131. Treble clef, 6/8 time signature. Staff lines T, A, B. Fingering: 2 4 5 4 0 2 | 1 2 4 1 1 | 0 0 0 0 4 | 2 1 4 | 0 0 0 4

136

Tablature for exercise 136. Treble clef, 6/8 time signature. Staff lines T, A, B. Fingering: 2 1 4 1 | 0 0 0 0 0 | 0 0 2 0 | 4 1 1 2 4 | 2 4 6 8 9 11

141

Tablature for exercise 141. Treble clef, 6/8 time signature. Staff lines T, A, B. Fingering: 2 2 2 0 0 | 4 0 | 4 4 6 4 1 | 2 4 2 4 2 | 4 2 2 4 | 4 4 4 4 4 | 0

146

Tablature for exercise 146. Treble clef, 6/8 time signature. Staff lines T, A, B. Fingering: 0 | 0 | 0 | 0 | 0 4 4 0 0 | 4 0 4 4 | 4 4 4 4 4 | 4 4 4 4 4 | 0

V.S.

151

T	2	4	5	4	0	2	1	2	4	1				
A	2	2	2	2			2	4	1		0	0	0	0
B	0	0	0	0			1	4	1		2	2	4	2
							4	4	4		4	4	4	4

156

T						2	0			1	2	4	0	2	4	6	8	9	11
A	2		4		0	0	0	0	0		0	0	2	0	4	1			
B		1	4	1	0	2	9			0	9	9	9	4	4	4	4	4	4
		4	4	4	4	4	9			9	9	9	9	4	8	8	8	8	8
															?	?			

161

T																			0
A	2	2	2	0	0	4	0			2	4	0	4	2	2	4	4	4	4
B				0	0	4	0	4	4	6	4	1	2	4	2	4	4	4	4
				?	9	?	8	4	6	4	?	?	4	?	7	7	?	7	?

166

T																			0
A	0					0													0
B		4	4		4	0	4	4			4	4	4	4	4		4	4	0
		7	7		7	5				7	7	7	7	7	5		5	5	5

171

T	2	4	5	4	0	2	1	2	4	1				
A	2	2	2	2			2	4	1		0	0	0	0
B	0	0	0	0			1	4	1		0	0	2	0
							4	4	4		4	4	4	4
							4	4	4		4	4	4	4

176

T						2	0			1	2	4	0	2	4	6	8	9	11
A	2		4		0	0	0	0	0		0	0	2	0	4	1			
B		1	4	1	0	2	9			0	9	9	9	4	4	4	4	4	4
		4	4	4	4	4	9			9	9	9	9	4	8	8	8	8	8
															?	?			

181

T																			0
A	2	2	2	0	0	4	0			2	4	0	4	2	2	4	4	4	4
B				0	0	4	0	4	4	6	4	1	2	4	2	4	4	4	4
				?	9	?	8	4	6	4	?	?	4	?	7	7	?	7	?

186

T																			0
A	0					0													0
B		4	4		4	0	4	4			4	4	4	4	4		4	4	0
		7	7		7	5				7	7	7	7	7	5		5	5	5

191

T	2	4	5	4	0	2	1	2	4	1				
A	2	2	2	2			2	4	1		0	0	0	0
B	0	0	0	0			1	4	1		0	0	2	0
							4	4	4		4	4	4	4
							4	4	4		4	4	4	4

196

T						2	0			1	2	4	0	2	4	6	8	9	11
A	2		4		0	0	0	0	0		0	0	2	0	4	1			
B		1	4	1	0	2	9			0	9	9	9	4	4	4	4	4	4
		4	4	4	4	4	9			9	9	9	9	4	8	8	8	8	8
															?	?			

201

201

206

206

211

211

216

216

221

221

226

226

231

231

236

236

240

240

♩ = 180,000183



9



16



23



31



38



45



53



60



67



V.S.

74



81



88



95



102



110



117



124



132



139







