

♩ = 126,000130

Flute

Baroque Trumpet

Percussion

Alto Glockenspiel

Jazz Guitar

Banjo

Acoustic Bass

Bandoneon

Bandoneon

♩ = 126,000130

FX 5 (Brightness)

Solo TANZEMIT



4

Fl.

Bar. Tpt.

Perc.

J. Gtr.

A. Bass

Band.

FX 5

Solo

6

Fl.

Bar. Tpt.

Perc.

J. Gtr.

A. Bass

Band.

FX 5

Solo

Detailed description: This block contains the musical notation for measures 6, 7, and 8. The score is for a multi-instrument ensemble. The Flute (Fl.) part has a melodic line starting on measure 6. The Baritone Trumpet (Bar. Tpt.) part has a rhythmic pattern of eighth notes with 'x' marks above them. The Percussion (Perc.) part has a complex rhythmic pattern with sixteenth notes and 'x' marks. The Jazz Guitar (J. Gtr.) part has a melodic line with eighth notes. The Acoustic Bass (A. Bass) part has a simple bass line. The Band part has a rhythmic pattern of eighth notes with 'x' marks. The FX 5 part has a melodic line. The Solo part has a melodic line. The number '6' is written above the first measure.



9

Fl.

Bar. Tpt.

Perc.

J. Gtr.

A. Bass

Band.

FX 5

Solo

Detailed description: This block contains the musical notation for measures 9, 10, and 11. The Flute (Fl.) part is silent. The Baritone Trumpet (Bar. Tpt.) part has a rhythmic pattern of eighth notes with 'x' marks. The Percussion (Perc.) part has a complex rhythmic pattern with sixteenth notes and 'x' marks. The Jazz Guitar (J. Gtr.) part has a melodic line with eighth notes. The Acoustic Bass (A. Bass) part has a simple bass line. The Band part has a rhythmic pattern of eighth notes with 'x' marks. The FX 5 part is silent. The Solo part has a melodic line that is sustained across measures 9, 10, and 11, indicated by a long horizontal line with a fermata. The number '9' is written above the first measure.

11

Fl.

Bar. Tpt.

Perc.

J. Gtr.

A. Bass

Band.

FX 5

Solo

Detailed description: This musical score covers measures 11 and 12. The Flute part has a melodic line with a sharp sign on the second measure. The Baritone Trumpet part features a complex rhythmic pattern with sixteenth notes and rests. The Percussion part has a steady eighth-note pattern with a '6' marking. The Jazz Guitar part has a rhythmic pattern with slurs. The Acoustic Bass part has a simple eighth-note line. The Band part has a chordal accompaniment. The FX 5 part has a few notes with a sharp sign. The Solo part has a few notes with a flat sign.



13

Fl.

Bar. Tpt.

Perc.

J. Gtr.

A. Bass

Band.

FX 5

Solo

Detailed description: This musical score covers measures 13 and 14. The Flute part has a melodic line with a sharp sign and a slur. The Baritone Trumpet part has a complex rhythmic pattern with a slur. The Percussion part has a steady eighth-note pattern with a '6' marking. The Jazz Guitar part has a rhythmic pattern with slurs. The Acoustic Bass part has a simple eighth-note line. The Band part has a chordal accompaniment. The FX 5 part has a few notes with a sharp sign and a slur. The Solo part has a few notes with a flat sign and a slur.

15

Fl.

Bar. Tpt.

Perc.

J. Gtr.

A. Bass

Band.

FX 5

Solo

Detailed description: This system contains measures 15 and 16. The Flute part has a few notes. The Baritone Trumpet part has a complex rhythmic pattern with many sixteenth notes. The Percussion part has a steady eighth-note pattern with sixteenth-note accents. The Jazz Guitar part has a rhythmic pattern with eighth notes and sixteenth notes. The Acoustic Bass part has a simple eighth-note pattern. The Band part has a rhythmic pattern with eighth notes and sixteenth notes. The FX 5 part has a few notes. The Solo part has a few notes.



17

Fl.

Bar. Tpt.

Perc.

J. Gtr.

A. Bass

Band.

Band.

FX 5

Solo

Detailed description: This system contains measures 17, 18, and 19. The Flute part is mostly silent. The Baritone Trumpet part has a complex rhythmic pattern with many sixteenth notes and a triplet. The Percussion part has a steady eighth-note pattern with sixteenth-note accents. The Jazz Guitar part has a rhythmic pattern with eighth notes and sixteenth notes. The Acoustic Bass part has a simple eighth-note pattern. The Band part has a rhythmic pattern with eighth notes and sixteenth notes. The FX 5 part is mostly silent. The Solo part is mostly silent.

20

Bar. Tpt. Perc. A. Bass Band. Band. FX 5



23

Bar. Tpt. Perc. A. Bass Band. Band. FX 5

27

Fl.

Bar. Tpt.

Perc.

J. Gtr.

A. Bass

Band.

Band.

FX 5

Solo

Detailed description: This block contains the musical score for measures 27 and 28. The Flute part has a melodic line with a sharp sign. The Baritone Trumpet part has a rhythmic pattern of eighth notes with 'x' marks above them. The Percussion part has a complex rhythmic pattern with '6' above it. The Jazz Guitar part has a melodic line with many slurs. The Acoustic Bass part has a simple rhythmic pattern. The two Band parts have different textures, with the second one being more rhythmic. The FX 5 part has a few notes with a sharp sign. The Solo part has a few notes with a sharp sign.



29

Fl.

Bar. Tpt.

Perc.

J. Gtr.

A. Bass

Band.

FX 5

Solo

Detailed description: This block contains the musical score for measures 29 and 30. The Flute part has a melodic line with a slur. The Baritone Trumpet part has a rhythmic pattern of eighth notes with 'x' marks above them. The Percussion part has a complex rhythmic pattern with '6' above it. The Jazz Guitar part has a melodic line with many slurs. The Acoustic Bass part has a simple rhythmic pattern. The two Band parts have different textures, with the second one being more rhythmic. The FX 5 part has a few notes with a sharp sign. The Solo part has a few notes with a sharp sign.

32

Fl.

Bar. Tpt.

Perc.

J. Gtr.

A. Bass

Band.

FX 5

Solo

Detailed description: This musical score covers measures 32, 33, and 34. The Flute (Fl.) part has a whole note in measure 32, a half note in measure 33, and a whole note in measure 34. The Baritone Trumpet (Bar. Tpt.) part has a rhythmic pattern of eighth notes with 'x' marks above them, and a whole note in measure 34. The Percussion (Perc.) part has a consistent eighth-note pattern with '6' above it. The Jazz Guitar (J. Gtr.) part has a rhythmic pattern of eighth notes with 'x' marks above them. The Acoustic Bass (A. Bass) part has a rhythmic pattern of eighth notes. The Band part has a rhythmic pattern of eighth notes with 'x' marks above them. The FX 5 part has a whole note in measure 32, a half note in measure 33, and a whole note in measure 34. The Solo part has a whole note in measure 32, a half note in measure 33, and a whole note in measure 34.



34

Fl.

Bar. Tpt.

Perc.

J. Gtr.

A. Bass

Band.

FX 5

Solo

Detailed description: This musical score covers measures 34, 35, and 36. The Flute (Fl.) part has a whole rest in measure 34, a whole note in measure 35, and a whole note in measure 36. The Baritone Trumpet (Bar. Tpt.) part has a rhythmic pattern of eighth notes with 'x' marks above them, and a whole note in measure 36. The Percussion (Perc.) part has a consistent eighth-note pattern with '6' above it. The Jazz Guitar (J. Gtr.) part has a rhythmic pattern of eighth notes with 'x' marks above them. The Acoustic Bass (A. Bass) part has a rhythmic pattern of eighth notes. The Band part has a rhythmic pattern of eighth notes with 'x' marks above them. The FX 5 part has a whole rest in measure 34, a whole note in measure 35, and a whole note in measure 36. The Solo part has a whole note in measure 34, a half note in measure 35, and a whole note in measure 36.

36

Fl.

Bar. Tpt.

Perc.

J. Gtr.

A. Bass

Band.

FX 5

Solo

Detailed description: This block contains the musical notation for measures 36 and 37. It features eight staves: Flute (Fl.), Baritone Trumpet (Bar. Tpt.), Percussion (Perc.), Jazz Guitar (J. Gtr.), Acoustic Bass (A. Bass), Band, FX 5, and Solo. The key signature has one flat (B-flat). The percussion part includes sixteenth-note patterns with '6' markings. The Solo part consists of a sequence of chords: B-flat major, G major, F major, and E-flat major.



38

Fl.

Bar. Tpt.

Perc.

J. Gtr.

A. Bass

Band.

FX 5

Solo

Detailed description: This block contains the musical notation for measures 38 and 39. It features the same eight staves as the previous block. The key signature has one flat. The Solo part consists of a sequence of chords: B-flat major, G major, F major, and E-flat major.

40

Fl.

Bar. Tpt.

Perc.

J. Gtr.

A. Bass

Band

FX 5

Solo

Detailed description: This musical score covers measures 40 and 41. The Flute (Fl.) part has a whole note chord in measure 40 and a whole note chord in measure 41. The Baritone Trumpet (Bar. Tpt.) has a complex rhythmic pattern with eighth notes and rests. The Percussion (Perc.) part features a consistent eighth-note pattern with sixteenth-note accents, marked with '6' above the notes. The Jazz Guitar (J. Gtr.) has a rhythmic pattern of eighth notes with slurs. The Acoustic Bass (A. Bass) has a simple eighth-note line. The Band part consists of chords with eighth-note rhythms. The FX 5 part has a whole note chord in measure 40 and a whole note chord in measure 41. The Solo part has a whole note chord in measure 40 and a whole note chord in measure 41.



42

Bar. Tpt.

Perc.

J. Gtr.

A. Bass

Band

Band

FX 5

Detailed description: This musical score covers measures 42, 43, and 44. The Baritone Trumpet (Bar. Tpt.) has a melodic line with a triplet in measure 42. The Percussion (Perc.) part continues with eighth-note patterns and accents. The Jazz Guitar (J. Gtr.) has a rhythmic pattern of eighth notes with slurs. The Acoustic Bass (A. Bass) has a simple eighth-note line. The Band part consists of chords with eighth-note rhythms. The FX 5 part has a whole note chord in measure 42 and a whole note chord in measure 44.

45

Bar. Tpt. Perc. A. Bass Band. Band. FX 5

Detailed description: This block contains the musical score for measures 45, 46, and 47. It features six staves: Bar. Tpt. (Baritone Trumpet), Perc. (Percussion), A. Bass (Alto Bass), and two Band staves, plus FX 5 (Effects). The Bar. Tpt. staff has a treble clef and a key signature of one flat. It contains melodic lines with a triplet of eighth notes in measure 47. The Perc. staff has a double bar line and a key signature of one flat, with a consistent eighth-note pattern. The A. Bass staff has a bass clef and a key signature of one flat, with a melodic line. The two Band staves have treble clefs and a key signature of one flat, with chordal accompaniment. The FX 5 staff has a treble clef and a key signature of one flat, with a melodic line.



48

Bar. Tpt. Perc. A. Bass Band. Band. FX 5

Detailed description: This block contains the musical score for measures 48, 49, and 50. It features the same six staves as the previous block. The Bar. Tpt. staff has a treble clef and a key signature of one flat, with a melodic line. The Perc. staff has a double bar line and a key signature of one flat, with a consistent eighth-note pattern. The A. Bass staff has a bass clef and a key signature of one flat, with a melodic line. The two Band staves have treble clefs and a key signature of one flat, with chordal accompaniment. The FX 5 staff has a treble clef and a key signature of one flat, with a melodic line.

51

Fl.
Bar. Tpt.
Perc.
Alto Glock.
J. Gtr.
Ban.
A. Bass
Band.
Band.
FX 5



53

Fl.
Bar. Tpt.
Perc.
Alto Glock.
J. Gtr.
Ban.
A. Bass
Band.
FX 5

55

Fl. Bar. Tpt. Perc. Alto Glock. J. Gtr. Ban. A. Bass Band. FX 5

Detailed description: This block contains the musical score for measures 55 and 56. The score is arranged in a grand staff with ten staves. The instruments are: Flute (Fl.), Baritone Trumpet (Bar. Tpt.), Percussion (Perc.), Alto Glockenspiel (Alto Glock.), Jazz Guitar (J. Gtr.), Banjo (Ban.), Acoustic Bass (A. Bass), Band, and FX 5. The key signature has two flats (B-flat and E-flat). The time signature is 4/4. The Flute part has a melodic line with a sharp sign above the second measure. The Baritone Trumpet part has a rhythmic pattern of eighth notes with 'x' marks above them. The Percussion part has a complex rhythmic pattern with '6' above it. The Alto Glockenspiel part has a simple melodic line. The Jazz Guitar part has a complex rhythmic pattern with 'x' marks above it. The Banjo part has a complex rhythmic pattern with '6' above it. The Acoustic Bass part has a simple melodic line. The Band part has a complex rhythmic pattern with '6' above it. The FX 5 part has a simple melodic line.



57

Fl. Bar. Tpt. Perc. Alto Glock. J. Gtr. Ban. A. Bass Band. FX 5

Detailed description: This block contains the musical score for measures 57 and 58. The score is arranged in a grand staff with ten staves. The instruments are: Flute (Fl.), Baritone Trumpet (Bar. Tpt.), Percussion (Perc.), Alto Glockenspiel (Alto Glock.), Jazz Guitar (J. Gtr.), Banjo (Ban.), Acoustic Bass (A. Bass), Band, and FX 5. The key signature has two flats (B-flat and E-flat). The time signature is 4/4. The Flute part is silent. The Baritone Trumpet part has a rhythmic pattern of eighth notes with 'x' marks above them. The Percussion part has a complex rhythmic pattern with '6' above it. The Alto Glockenspiel part is silent. The Jazz Guitar part has a complex rhythmic pattern with 'x' marks above it. The Banjo part has a complex rhythmic pattern with '3' above it. The Acoustic Bass part has a simple melodic line. The Band part has a complex rhythmic pattern with '6' above it. The FX 5 part is silent.

59

Fl.
Bar. Tpt.
Perc.
Alto Glock.
J. Gtr.
Ban.
A. Bass
Band.
FX 5



61

Fl.
Bar. Tpt.
Perc.
Alto Glock.
J. Gtr.
Ban.
A. Bass
Band.
FX 5

63

Fl.

Bar. Tpt.

Perc.

Alto Glock.

J. Gtr.

Ban.

A. Bass

Band.

FX 5

Detailed description: This system contains measures 63 and 64. The Flute (Fl.) part has a whole note G4 in measure 63 and a whole note G4 with a sharp sign in measure 64. The Baritone Trumpet (Bar. Tpt.) part has a rhythmic pattern of eighth notes with a sixteenth note triplet in measure 63, and a similar pattern in measure 64. The Percussion (Perc.) part has a consistent eighth-note triplet pattern in both measures. The Alto Glockenspiel (Alto Glock.) part has a whole note G4 in measure 63 and a whole note G4 with a sharp sign in measure 64. The Jazz Guitar (J. Gtr.) part has a rhythmic pattern of eighth notes with a sixteenth note triplet in measure 63, and a similar pattern in measure 64. The Banjo (Ban.) part has a rhythmic pattern of eighth notes with a sixteenth note triplet in measure 63, and a similar pattern in measure 64. The Acoustic Bass (A. Bass) part has a rhythmic pattern of eighth notes with a sixteenth note triplet in measure 63, and a similar pattern in measure 64. The Band part has a rhythmic pattern of eighth notes with a sixteenth note triplet in measure 63, and a similar pattern in measure 64. The FX 5 part has a whole note G4 in measure 63 and a whole note G4 with a sharp sign in measure 64.



65

Fl.

Bar. Tpt.

Perc.

Alto Glock.

J. Gtr.

Ban.

A. Bass

Band.

FX 5

Solo

Detailed description: This system contains measures 65 and 66. The Flute (Fl.) part has a whole note G4 in measure 65 and a whole rest in measure 66. The Baritone Trumpet (Bar. Tpt.) part has a rhythmic pattern of eighth notes with a sixteenth note triplet in measure 65, and a similar pattern in measure 66. The Percussion (Perc.) part has a consistent eighth-note triplet pattern in both measures. The Alto Glockenspiel (Alto Glock.) part has a whole note G4 in measure 65 and a whole rest in measure 66. The Jazz Guitar (J. Gtr.) part has a rhythmic pattern of eighth notes with a sixteenth note triplet in measure 65, and a similar pattern in measure 66. The Banjo (Ban.) part has a rhythmic pattern of eighth notes with a sixteenth note triplet in measure 65, and a similar pattern in measure 66. The Acoustic Bass (A. Bass) part has a rhythmic pattern of eighth notes with a sixteenth note triplet in measure 65, and a similar pattern in measure 66. The Band part has a rhythmic pattern of eighth notes with a sixteenth note triplet in measure 65, and a similar pattern in measure 66. The FX 5 part has a whole note G4 in measure 65 and a whole rest in measure 66. The Solo part has a whole rest in measure 65 and a whole note G4 with a sharp sign in measure 66.

67

Bar. Tpt.

Perc.

A. Bass

Band.

Band.

FX 5



70

Bar. Tpt.

Perc.

A. Bass

Band.

Band.

FX 5

73

Fl.

Bar. Tpt.

Perc.

J. Gtr.

A. Bass

Band.

Band.

FX 5

Solo

Detailed description: This musical score covers measures 73, 74, and 75. The Flute (Fl.) part has rests in measures 73 and 74, then plays a half note G4 in measure 75. The Baritone Trumpet (Bar. Tpt.) plays a melodic line with eighth notes and rests. The Percussion (Perc.) part features a consistent eighth-note pattern with sixteenth-note accents. The Jazz Guitar (J. Gtr.) plays a complex eighth-note rhythm. The Acoustic Bass (A. Bass) provides a steady eighth-note bass line. The two Band parts play chords and rhythmic patterns. The FX 5 part has rests in measures 73 and 74, then plays a half note G4 in measure 75. The Solo part has rests in measures 73 and 74, then plays a half note G4 in measure 75.



76

Fl.

Bar. Tpt.

Perc.

J. Gtr.

A. Bass

Band.

FX 5

Solo

Detailed description: This musical score covers measures 76, 77, 78, and 79. The Flute (Fl.) part plays a half note G4 in measure 76, which is sustained through measures 77, 78, and 79. The Baritone Trumpet (Bar. Tpt.) continues its melodic line with eighth notes and rests. The Percussion (Perc.) part maintains its eighth-note pattern with sixteenth-note accents. The Jazz Guitar (J. Gtr.) plays a complex eighth-note rhythm. The Acoustic Bass (A. Bass) provides a steady eighth-note bass line. The two Band parts play chords and rhythmic patterns. The FX 5 part has rests in measures 76 and 77, then plays a half note G4 in measure 78, which is sustained through measure 79. The Solo part has rests in measures 76 and 77, then plays a half note G4 in measure 78, which is sustained through measure 79.

78

Fl.

Bar. Tpt.

Perc.

J. Gtr.

A. Bass

Band.

FX 5

Solo

Detailed description: This musical score block covers measures 78 and 79. It features eight staves: Flute (Fl.), Baritone Trumpet (Bar. Tpt.), Percussion (Perc.), Junior Guitar (J. Gtr.), Acoustic Bass (A. Bass), Band, FX 5, and Solo. The Flute part has a whole rest in measure 78 and a half note in measure 79. The Baritone Trumpet part has a whole rest in measure 78 and a half note in measure 79. The Percussion part has a rhythmic pattern of eighth notes with accents and sixteenth notes, with a '6' marking above the staff. The Junior Guitar part has a rhythmic pattern of eighth notes with accents. The Acoustic Bass part has a rhythmic pattern of eighth notes with accents. The Band part has a rhythmic pattern of eighth notes with accents. The FX 5 part has a whole rest in measure 78 and a half note in measure 79. The Solo part has a whole rest in measure 78 and a half note in measure 79.



80

Fl.

Bar. Tpt.

Perc.

J. Gtr.

A. Bass

Band.

FX 5

Solo

Detailed description: This musical score block covers measures 80 and 81. It features eight staves: Flute (Fl.), Baritone Trumpet (Bar. Tpt.), Percussion (Perc.), Junior Guitar (J. Gtr.), Acoustic Bass (A. Bass), Band, FX 5, and Solo. The Flute part has a whole note in measure 80 and a whole note in measure 81. The Baritone Trumpet part has a whole note in measure 80 and a whole note in measure 81. The Percussion part has a rhythmic pattern of eighth notes with accents and sixteenth notes, with a '6' marking above the staff. The Junior Guitar part has a rhythmic pattern of eighth notes with accents. The Acoustic Bass part has a rhythmic pattern of eighth notes with accents. The Band part has a rhythmic pattern of eighth notes with accents. The FX 5 part has a whole note in measure 80 and a whole note in measure 81. The Solo part has a whole note in measure 80 and a whole note in measure 81.

82

Fl.

Bar. Tpt.

Perc.

J. Gtr.

A. Bass

Band.

FX 5

Solo

Detailed description: This musical score covers measures 82, 83, and 84. The Flute part has a whole rest in measure 82, followed by a half note G4 in measure 83 and a half note A4 in measure 84. The Baritone Trumpet part plays a rhythmic pattern of eighth notes with a sixteenth-note triplet in measure 82, and continues with eighth notes in measures 83 and 84. The Percussion part features a consistent eighth-note triplet pattern throughout. The Jazz Guitar part has a rhythmic pattern of eighth notes with a sixteenth-note triplet in measure 82, and continues with eighth notes in measures 83 and 84. The Acoustic Bass part has a rhythmic pattern of eighth notes with a sixteenth-note triplet in measure 82, and continues with eighth notes in measures 83 and 84. The Band part consists of chords with a rhythmic pattern of eighth notes with a sixteenth-note triplet in measure 82, and continues with eighth notes in measures 83 and 84. The FX 5 part has a whole rest in measure 82, followed by a half note G4 in measure 83 and a half note A4 in measure 84. The Solo part has a whole rest in measure 82, followed by a half note G4 in measure 83 and a half note A4 in measure 84.



85

Fl.

Bar. Tpt.

Perc.

J. Gtr.

A. Bass

Band.

FX 5

Solo

Detailed description: This musical score covers measures 85, 86, and 87. The Flute part has a whole rest in measure 85, followed by a half note G4 in measure 86 and a half note A4 in measure 87. The Baritone Trumpet part has a whole rest in measure 85, followed by a half note G4 in measure 86 and a half note A4 in measure 87. The Percussion part features a consistent eighth-note triplet pattern throughout. The Jazz Guitar part has a rhythmic pattern of eighth notes with a sixteenth-note triplet in measure 85, and continues with eighth notes in measures 86 and 87. The Acoustic Bass part has a rhythmic pattern of eighth notes with a sixteenth-note triplet in measure 85, and continues with eighth notes in measures 86 and 87. The Band part consists of chords with a rhythmic pattern of eighth notes with a sixteenth-note triplet in measure 85, and continues with eighth notes in measures 86 and 87. The FX 5 part has a whole rest in measure 85, followed by a half note G4 in measure 86 and a half note A4 in measure 87. The Solo part has a whole rest in measure 85, followed by a half note G4 in measure 86 and a half note A4 in measure 87.

87

Fl.

Bar. Tpt.

Perc.

J. Gtr.

A. Bass

Band.

FX 5

Solo



89

$\text{♩} = 113,000099$ $\text{♩} = 104,000099$ $\text{♩} = 77,000076$ $\text{♩} = 66,000069$

Fl.

Bar. Tpt.

Perc.

Alto Glock.

J. Gtr.

Ban.

A. Bass

Band.

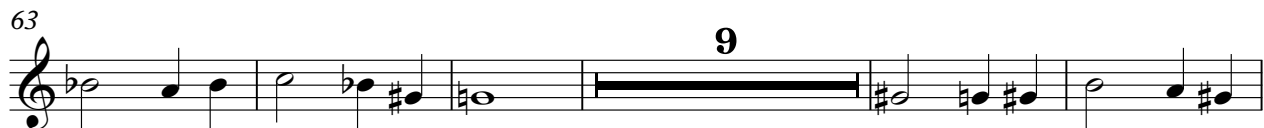
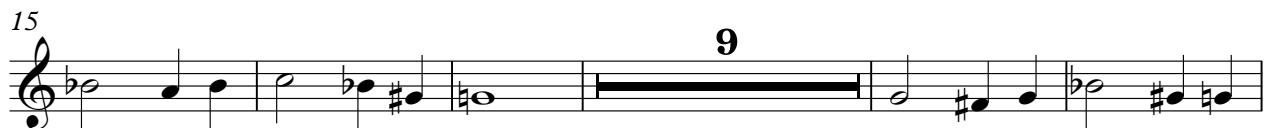
Band.

FX 5

Solo

Flute

♩ = 126,000130



2

Flute

83



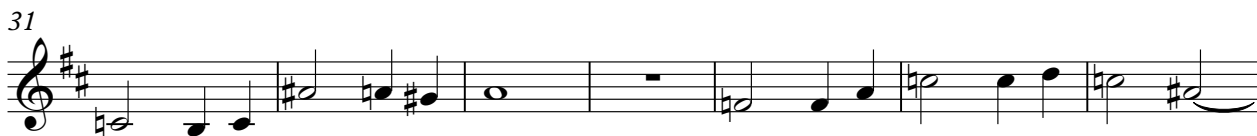
87



1 2 3 4 5 6 7 8 9 10 11 12 13 14 15 16 17 18 19 20 21 22 23 24 25 26 27 28 29 30 31 32 33 34 35 36 37 38 39 40 41 42 43 44 45 46 47 48 49 50 51 52 53 54 55 56 57 58 59 60 61 62 63 64 65 66 67 68 69 70 71 72 73 74 75 76 77 78 79 80 81 82 83 84 85 86 87 88 89 90 91 92 93 94 95 96 97 98 99 100

Baroque Trumpet

♩ = 126,000130



Baroque Trumpet

59



66



70



75



81



86



69

Percussion

♩ = 126,000130

4

6

8

10

12

14

16

18

20

V.S.

23

26

28

30

32

34

36

38

40

42

44



47



50



52



54



56



58



60



62



64



V.S.

4

66 Percussion

68

71

74

76

78

80

82

84

86

88 Percussion 5

89

$\text{♩} = 113,0000104,000015 = 92,000130 \text{ ♩} = 76,000070$

Alto Glockenspiel

♩ = 126,000130

50

55

61

65

23

♩ = 126,000130

Jazz Guitar

♩ = 126,000130







V.S.

83



85



87



89

$\text{♩} = 113,0000094,000015 = 92,000130 = 77,000006069$

Musical staff for measure 89, concluding the sequence with a final melodic phrase and a double bar line.

Banjo

♩ = 126,000130

50

Measure 50: A single bar with a solid black line across the staff, indicating a whole rest.

52

Measure 52: A bar with a solid black line across the staff, indicating a whole rest.

54

Measure 54: A bar with a solid black line across the staff, indicating a whole rest.

56

Measure 56: A bar with a solid black line across the staff, indicating a whole rest.

59

Measure 59: A bar with a solid black line across the staff, indicating a whole rest.

61

Measure 61: A bar with a solid black line across the staff, indicating a whole rest.

63

Measure 63: A bar with a solid black line across the staff, indicating a whole rest.

65

Measure 65: A bar with a solid black line across the staff, indicating a whole rest.

67

Measure 67: A bar with a solid black line across the staff, indicating a whole rest.

22

♩ = 126,000130 76,000069

Acoustic Bass

♩ = 126,000130



V.S.

41



45



49



53



57



61



65



69



73



77



81



85



88

♩ = 113,004,000 152,007,300 075,000069



Bandoneon

♩ = 126,000130

18

22

28

15

46

52

15

70

74

13

♩ = 139,000130

Bandoneon

♩ = 126,000130



V.S.

26



29



32



35



38



41



44



47



74

Musical staff for measure 74, featuring a treble clef, a key signature of one sharp (F#), and a 2/4 time signature. The staff contains a sequence of chords and rests, starting with a quarter rest followed by a series of eighth-note chords.

77

Musical staff for measure 77, featuring a treble clef, a key signature of one sharp (F#), and a 2/4 time signature. The staff contains a sequence of eighth-note chords.

80

Musical staff for measure 80, featuring a treble clef, a key signature of one sharp (F#), and a 2/4 time signature. The staff contains a sequence of eighth-note chords.

83

Musical staff for measure 83, featuring a treble clef, a key signature of one sharp (F#), and a 2/4 time signature. The staff contains a sequence of eighth-note chords.

86

Musical staff for measure 86, featuring a treble clef, a key signature of one sharp (F#), and a 2/4 time signature. The staff contains a sequence of eighth-note chords.

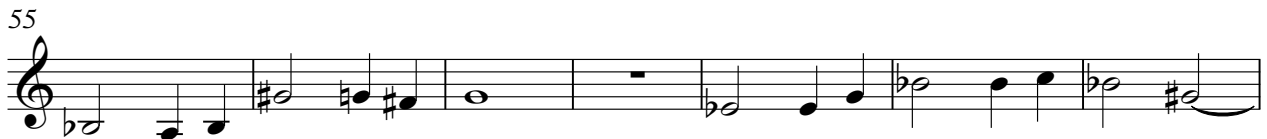
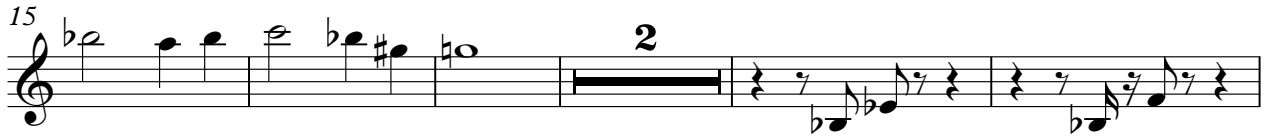
88

♩ = 113,000,000 + 152,007,300 + 076,000069

Musical staff for measure 88, featuring a treble clef, a key signature of one sharp (F#), and a 2/4 time signature. The staff contains a sequence of eighth-note chords, ending with a double bar line.

FX 5 (Brightness)

♩ = 126,000130



68



73



80



86



13000000150076 = 66,00006

Solo

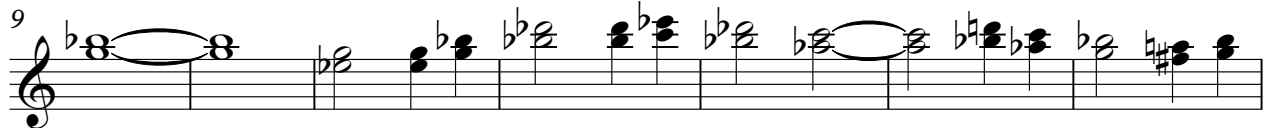
♩ = 126,000130
TANZEMIT

2



Musical staff with notes and a measure rest of 2.

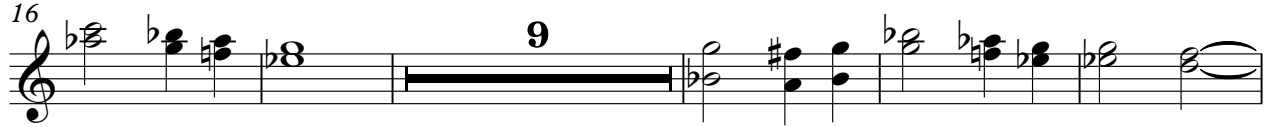
9



Musical staff with notes and a measure rest of 9.

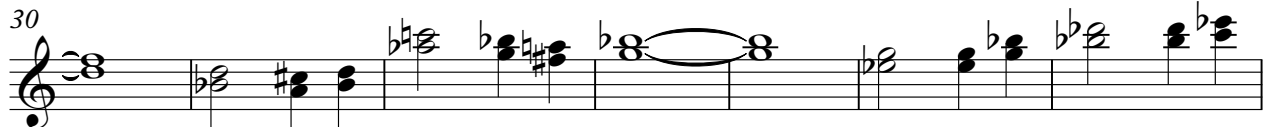
16

9



Musical staff with notes and a measure rest of 9.

30



Musical staff with notes and a measure rest of 9.

37

23



Musical staff with notes and a measure rest of 23.

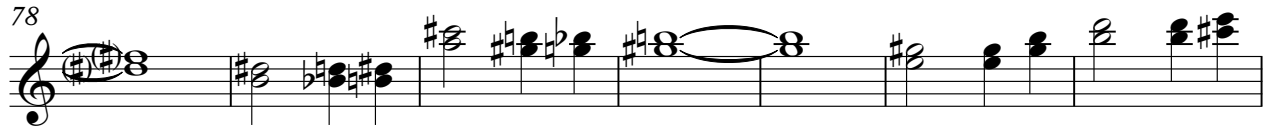
65

8



Musical staff with notes and a measure rest of 8.

78



Musical staff with notes and a measure rest of 8.

85

♩ = 126,000130
♩ = 66,00000



Musical staff with notes and a measure rest of 8.