

Gildas Arzel - Jean Johnny Jean 2

♩ = 86,000542

Drums

Vibraphon

Guitar

Clean gtr

Acoubass

Acordion

SyntBass

Sweep pad

Violin

Strings

Fiddle



5

Drums

Sweep pad

Violin

Strings

Fiddle

8

Drums

Sweep pad

Melodie

Violin

Strings

Fiddle

11

Drums

Sweep pad

Melodie

Strings

14

Drums

Sweep pad

Melodie

Strings

17

Drums

Sweep pad

Melodie

Strings

Fiddle

20

Drums

Sweep pad

Melodie

Strings

Fiddle



23

Drums

Guitar

Clean gtr

Acoubass

SyntBass

Sweep pad

Melodie

Strings

26

Drums

Guitar

Clean gtr

Acoubass

SyntBass

Sweep pad

Melodie

Violin

Fiddle



29

Drums

Guitar

Clean gtr

Acoubass

SyntBass

Sweep pad

Melodie

Violin

Strings

Fiddle

32

Drums

Guitar

Clean gtr

Acoubass

SyntBass

Sweep pad

Melodie

Violin

Strings

Fiddle



35

Drums

Guitar

Clean gtr

Acoubass

SyntBass

Sweep pad

Melodie

Strings

Fiddle

38

Drums

Guitar

Clean gtr

Acoubass

SyntBass

Sweep pad

Melodie

Strings

Fiddle



41

Drums

Vibraphon

Guitar

Clean gtr

Acoubass

SyntBass

Sweep pad

Melodie

Violin

Strings

Fiddle

44

Drums

Vibraphon

Guitar

Clean gtr

Acoubass

SyntBass

Sweep pad

Violin

Strings

Fiddle



47

Drums

Guitar

Clean gtr

Acoubass

SyntBass

Sweep pad

Melodie

Strings

50

Drums

Guitar

Clean gtr

Acoubass

SyntBass

Sweep pad

Melodie

Violin

Strings

Fiddle



53

Drums

Guitar

Clean gtr

Acoubass

SyntBass

Sweep pad

Melodie

Violin

Strings

Fiddle



56

Drums

Guitar

Clean gtr

Acoubass

SyntBass

Sweep pad

Melodie

Violin

Strings

Fiddle



59

Drums

Guitar

Clean gtr

Acoubass

SyntBass

Sweep pad

Melodie

Violin

Strings

Fiddle

62

Drums

Vibraphon

Acoubass

SyntBass

Sweep pad

Melodie

Strings

This system contains measures 62, 63, and 64. The drums play a consistent pattern of eighth notes with accents. The vibraphon plays chords in a similar rhythmic pattern. The acoustic bass and synt bass play a steady eighth-note bass line. The sweep pad has a sustained chord. The melody line has a few notes in measure 62 and then rests. The strings play a sustained chord.

65

Drums

Vibraphon

Acoubass

Acordion

SyntBass

Sweep pad

Strings

This system contains measures 65, 66, and 67. The drums continue their pattern. The vibraphon and acoustic bass parts remain consistent. The accordion enters in measure 65 with a melodic line. The synt bass continues its bass line. The sweep pad has a sustained chord. The strings play a sustained chord.

68

Drums

Vibraphon

Acoubass

Acordion

SyntBass

Sweep pad

Strings

This system contains measures 68, 69, and 70. The drums continue their pattern. The vibraphon and acoustic bass parts remain consistent. The accordion continues its melodic line. The synt bass continues its bass line. The sweep pad has a sustained chord. The strings play a sustained chord.

71

Drums

Vibraphon

Acoubass

Acordion

SyntBass

Detailed description: This block contains the musical notation for measures 71 and 72. It features five staves: Drums (top), Vibraphon, Acoubass, Acordion, and SyntBass (bottom). The Drums staff uses a snare drum and cymbal notation with various rhythmic patterns and accents. The Vibraphon staff shows chords and single notes. The Acoubass staff has a steady eighth-note bass line. The Acordion staff plays a simple eighth-note melody. The SyntBass staff has a bass line similar to the Acoubass. A double bar line is present at the end of measure 72.



73

Drums

Vibraphon

Guitar

Clean gtr

Acoubass

Acordion

SyntBass

Sweep pad

Melodie

Violin

Strings

Fiddle

Detailed description: This block contains the musical notation for measures 73 through 76. It features ten staves: Drums, Vibraphon, Guitar, Clean gtr, Acoubass, Acordion, SyntBass, Sweep pad, Melodie, Violin, Strings, and Fiddle (bottom). The Drums staff continues with its rhythmic pattern. The Vibraphon staff continues with its chords. The Guitar and Clean gtr staves are marked with 'T' and 'B' (Tremolo/Bow) and are otherwise empty. The Acoubass, Acordion, and SyntBass staves continue their respective parts. The Sweep pad, Melodie, Violin, Strings, and Fiddle staves are all empty, indicating that these instruments are not playing in this section. A double bar line is present at the end of measure 76.

# Gildas Arzel - Jean Johnny Jean 2

## Drums

♩ = 86,000542

4

6

8

10

12

14

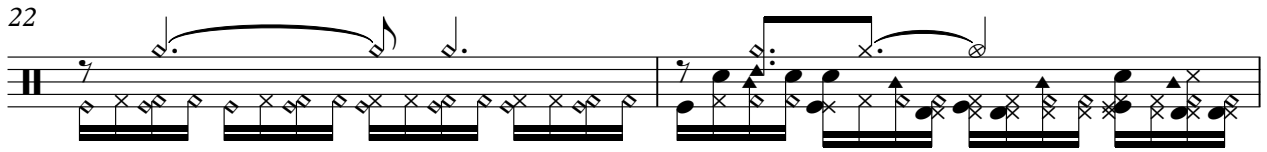
16

18

20

V.S.

22



24



26



28



30



32



34



36



38



40



42

44

46

48

50

52

54

56

58

60

V.S.

62

Musical notation for a drum set at measure 62. The notation is on a single staff with a treble clef and a 7/8 time signature. It features a complex rhythmic pattern with various drum sounds represented by different note heads and stems. A bracket above the staff groups several notes, and a circled 'x' indicates a cymbal hit.

64

Musical notation for a drum set at measure 64. The notation is on a single staff with a treble clef and a 7/8 time signature. It features a complex rhythmic pattern with various drum sounds represented by different note heads and stems. A bracket above the staff groups several notes, and a circled 'x' indicates a cymbal hit.

66

Musical notation for a drum set at measure 66. The notation is on a single staff with a treble clef and a 7/8 time signature. It features a complex rhythmic pattern with various drum sounds represented by different note heads and stems. A bracket above the staff groups several notes, and a circled 'x' indicates a cymbal hit.

68

Musical notation for a drum set at measure 68. The notation is on a single staff with a treble clef and a 7/8 time signature. It features a complex rhythmic pattern with various drum sounds represented by different note heads and stems. A bracket above the staff groups several notes, and a circled 'x' indicates a cymbal hit.

70

Musical notation for a drum set at measure 70. The notation is on a single staff with a treble clef and a 7/8 time signature. It features a complex rhythmic pattern with various drum sounds represented by different note heads and stems. A bracket above the staff groups several notes, and a circled 'x' indicates a cymbal hit.

72

Musical notation for a drum set at measure 72. The notation is on a single staff with a treble clef and a 7/8 time signature. It features a complex rhythmic pattern with various drum sounds represented by different note heads and stems. A bracket above the staff groups several notes, and a circled 'x' indicates a cymbal hit.

74

Musical notation for a drum set at measure 74. The notation is on a single staff with a treble clef and a 7/8 time signature. It features a complex rhythmic pattern with various drum sounds represented by different note heads and stems. A bracket above the staff groups several notes, and a circled 'x' indicates a cymbal hit. The measure concludes with a double bar line and a '2' indicating a double bar line.

Vibraphon

Gildas Arzel - Jean Johnny Jean 2

♩ = 86,000542

42

45

16

63

66

69

72

74

2



# Gildas Arzel - Jean Johnny Jean 2

Guitar

♩ = 86,000542

22

D	.	.	.	.	.	.	.	.	.	.	.	.	.	.	.	.	.	.	.	.
T	0	0	0	0	0	3	3	3	3	3	0	0	3							
A	5									2										
B	10	3	3	3	3	3	3	3	3	3	3	3	3	3	3	3	3	3	3	3
D	12	3	3	3	3	3	3	3	3	3	3	3	3	3	3	3	3	3	3	3
D	15	5								5										
	?																			

24

T	0	0	0	0	0	3	3	3	3	0	0	3								
A	5									2										
B	10	3	3	3	3	3	3	3	3	3	3	3	3	3	3	3	3	3	3	3
D	12	3	3	3	3	3	3	3	3	3	3	3	3	3	3	3	3	3	3	3
D	10	5																		

26

T	0	0	0	0	0	3	7	3	3	3	3	2								
A	5						0	0	0	0	0	2								
B	10	3	3	3	3	3	10	3	3	3	3	3								
D	12	3	3	3	3	3	3	3	3	3	3	3								
D	10																			

28

T	2	2	2	2	2	2	0	0	0	0	3									
A	7	3	3	3	3	3	5													
B	10	3	3	3	3	3	10	3	3	3	3									
D	3	5	3	3	3	3	10	5	3	3	3									
D																				

30

T	0	0	0	0	0	3	3	3	3	0	0	3								
A	5						2			5										
B	10	3	3	3	3	3	3	3	3	3	3	3								
D	12	3	3	3	3	3	3	3	3	3	3	3								
D	10	5																		

32

T	2	2	2	2	2	2	0	0	0	0	3									
A	7	3	3	3	3	3	5													
B	10	3	3	3	3	3	10	3	3	3	3									
D	3	5	3	3	3	3	10	5	3	3	3									
D																				

34

T	0	0	0	0	0	0	0	0	0	0	0									
A	5	1	1	1			5	1												
B	8	0	0	3	3	0	3	3	3	3	3									
D	8	0	0	3	0	5	5	3												
D	0																			

36

T	0	0	0	0	0	3	2	7	3	2	2									
A	5						0	0	0	0	0									
B	10	3	3	3	3	3	10	3	3	3	3									
D	12	3	3	3	3	3	3	3	3	3	3									
D	15	5																		

38

T	0	0	0	0	0	0	0	0	0	0	0									
A	5	1	1	1			5	1												
B	8	0	0	3	3	0	3	3	3	3	3									
D	8	0	0	3	0	5	5	3												
D	0																			

40

T	0	0	0	0	0	3	2	7	3	2	2									
A	5						0	0	0	0	0									
B	10	3	3	3	3	3	10	3	3	3	3									
D	12	3	3	3	3	3	3	3	3	3	3									
D	15	5																		

V.S.

2  
42

Guitar

T	0	0	0	0	0	3	0	0	0	0	0	3	0	0	0	0	0	0	0	3
A	5						5						5				5			
B	10	5					10	5					10	5			10	5		

44

T	0	0	0	0	0	3	0	0	0	0	0	3	0	0	0	0	0	0	0	3
A	5						5						5				5			
B	10	5					10	5					10	5			10	5		

46

T	0	0	0	0	0	3	0	0	0	0	0	3	0	0	0	0	0	0	0	3
A	5						5						5				5			
B	10	5					10	5					10	5			10	5		

48

T	0	0	0	0	0	3	2	2	2	2	2	2	2	2	2	2	2	2	2	2
A	5						6	0	0	0	0	0	0	0	0	0	0	0	0	0
B	10	5					10	5					10	5			10	5		

50

T	2	2	2	2	2	2	0	0	0	0	0	3	0	0	0	0	0	0	0	0
A	7	3	3	3	3	3	5						3	3	3	3	3	3	3	3
B	3	5	3	3	3	3	10	5					8	0	0	0	5	5	5	5

52

T	6	1	1	1	1	1	0	0	0	0	0	3	0	0	0	0	0	0	0	0
A	8	0	0	0	0	0	5						10	3	3	3	3	3	3	3
B	10	5					10	5					10	5			10	5		

54

T	3	2	7	3	3	3	3	3	3	3	3	3	3	3	3	3	3	3	3	3
A	0	0	10	0	0	0	0	0	0	0	0	0	0	0	0	0	0	0	0	0
B	5	3	3	3	3	3	5	3	3	3	3	3	3	3	3	3	3	3	3	3

56

T	2	2	7	3	3	3	0	0	0	0	0	3	0	0	0	0	0	0	0	0
A	0	0	0	0	0	0	5						3	3	3	3	3	3	3	3
B	3	5	3	3	3	3	10	5					8	0	0	0	5	5	5	5

58

T	6	1	1	1	1	1	0	0	0	0	0	3	0	0	0	0	0	0	0	0
A	8	0	0	0	0	0	5						10	3	3	3	3	3	3	3
B	10	5					10	5					10	5			10	5		

60

T	2	2	3	3	3	0	0	0	0	0	3								
A	3	0	0	0	0	5													
B	5	3	3	3	3	10	5												

14 2



42

T	1	1	1	1	1	1	1	1	1	1	1	1	1	1	1	1	1	1
A	5	2	2	2	2	5	2	2	2	2	2	5	2	2	2	2	2	2
B	8	3	3	3	3	8	3	3	3	3	3	8	3	3	3	3	3	3

44

T	1	1	1	1	1	1	1	1	1	1	1	1	1	1	1	1	1	1
A	5	2	2	2	2	5	2	2	2	2	2	5	2	2	2	2	2	2
B	8	3	3	3	3	8	3	3	3	3	3	8	3	3	3	3	3	3

46

T	1	1	1	1	1	1	1	1	1	1	1	1	1	1	1	1	1	1
A	5	2	2	2	2	5	2	2	2	2	2	5	2	2	2	2	2	2
B	8	3	3	3	3	8	3	3	3	3	3	8	3	3	3	3	3	3

48

T	1	1	1	1	1	5	0	0	0	0	0	0	0	0	0	0	0	0
A	5	2	2	2	2	8	0	0	0	0	0	0	0	0	0	0	0	0
B	8	3	3	3	3	8	3	3	3	3	3	3	3	3	3	3	3	3

50

T	0	0	0	0	0	1	1	1	1	1	1	3	3	3	3	3	3	3
A	5	1	1	1	1	5	2	2	2	2	2	7	3	3	3	3	3	3
B	8	3	3	3	3	8	3	3	3	3	3	8	3	3	3	3	3	3

52

T	4	4	4	4	4	1	1	1	1	1	1	1	1	1	1	0	0	0
A	8	0	3	0	3	5	5	2	2	2	2	5	2	2	2	0	0	0
B	15	3	3	3	3	8	3	3	3	3	3	3	3	3	3	3	3	3

54

T	0	0	0	0	0	0	0	0	0	0	0	0	0	0	0	0	0	0
A	1	5	1	1	1	1	1	1	1	1	1	1	1	1	1	1	1	1
B	3	3	3	3	3	3	3	3	3	3	3	3	3	3	3	3	3	3

56

T	0	0	0	0	0	1	1	1	1	1	3	3	3	3	3	3	3	3
A	1	5	1	1	1	5	2	2	2	2	7	3	3	3	3	3	3	3
B	3	3	3	3	3	8	3	3	3	3	8	3	3	3	3	3	3	3

58

T	4	4	4	4	4	1	1	1	1	1	1	1	1	1	0	0	0	0
A	8	0	3	0	3	5	5	2	2	2	2	5	2	2	2	0	0	0
B	15	3	3	3	3	8	3	3	3	3	3	3	3	3	3	3	3	3

60

T	0	0	0	0	0	1	1	1	1	1								
A	0	0	0	0	0	5	2	2	2	2								
B	3	3	3	3	3	8	3	3	3	3								

14 2

# Gildas Arzel - Jean Johnny Jean 2

Acoubass

♩ = 86,000542

22



25



28



31



34



37



40



43



46



49



V.S.

52



55



58



61



64



67



70



73



Acordion

Gildas Arzel - Jean Johnny Jean 2

♩ = 86,000542

**66**

69

72

**2**

♩ = 86,000542

22



25



28



31



34



37



40



43



46



49



V.S.



52



55



58



61



64



67



70



73



# Gildas Arzel - Jean Johnny Jean 2

Sweep pad

♩ = 86,000542

9

16

24

31

39

47

54

62

68

4 2

Detailed description: The score is written in 4/4 time with a tempo of 86,000542. It consists of ten staves. The first staff (measures 1-8) features a melodic line with eighth notes and a bass line with chords and eighth notes. The second staff (measures 9-15) continues the melodic line and adds more complex bass line patterns. The third staff (measures 16-23) shows a change in the bass line with a key signature change to two flats. The fourth staff (measures 24-30) returns to the original key signature and continues the melodic and bass line development. The fifth staff (measures 31-38) continues the melodic line. The sixth staff (measures 39-46) features a bass line with a key signature change to two flats. The seventh staff (measures 47-53) continues the bass line. The eighth staff (measures 54-61) continues the bass line. The ninth staff (measures 62-67) continues the bass line. The tenth staff (measures 68-74) concludes the piece with a key signature change to two flats and includes a 4-measure rest followed by a 2-measure rest.

Gildas Arzel - Jean Johnny Jean 2

Melodie

♩ = 86,000542

8

12

15

18

22

26

29

32

36

40

5

47



50



54



57



61



11

2

Violin

Gildas Arzel - Jean Johnny Jean 2

♩ = 86,000542

6

3 3 3 3

9

17

29

3

34

8

45

4

51

54

57

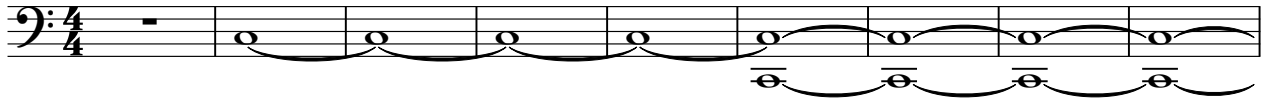
60

14 2

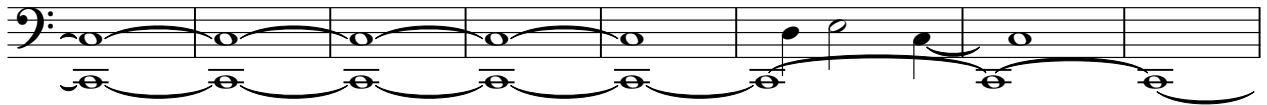
Gildas Arzel - Jean Johnny Jean 2

Strings

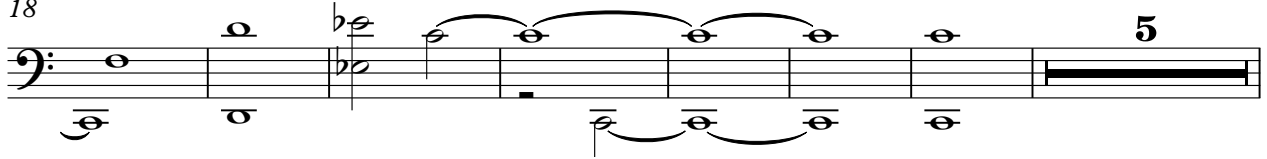
♩ = 86,000542



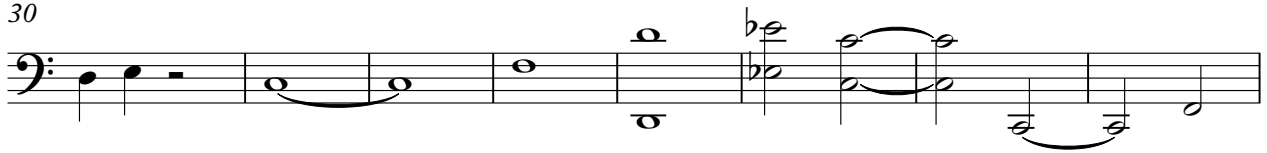
10



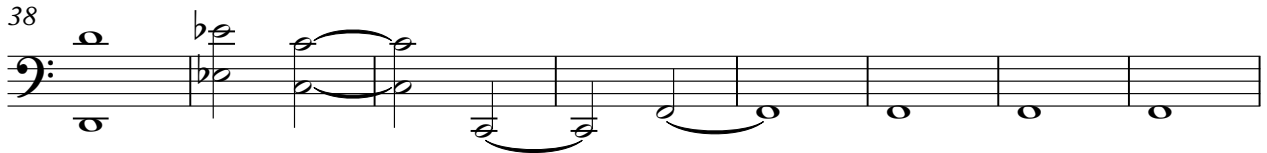
18



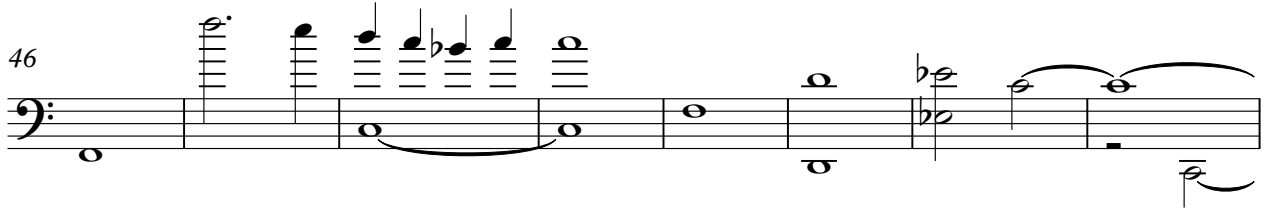
30



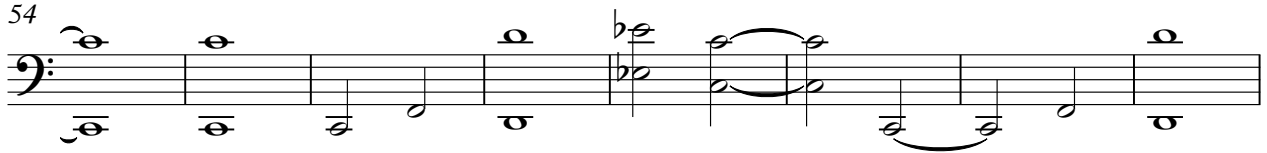
38



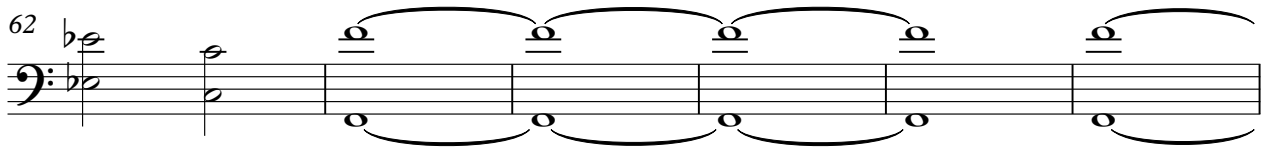
46



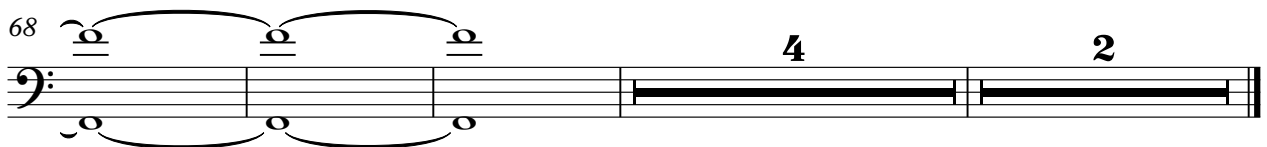
54



62



68



# Gildas Arzel - Jean Johnny Jean 2

Fiddle

♩ = 86,000542

6

10

19

21

3

26

31

35

37

39

41

2

Fiddle

43

46

52

55

58

60