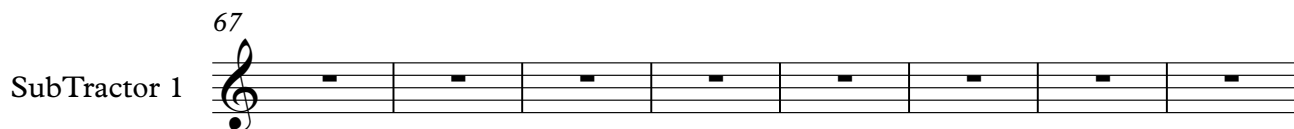
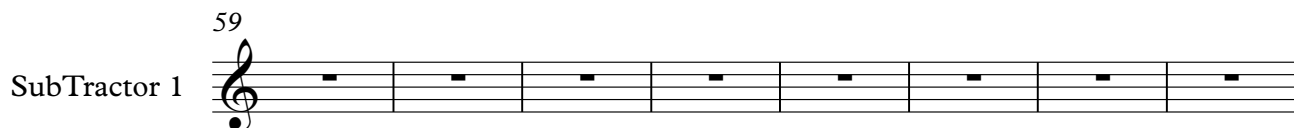
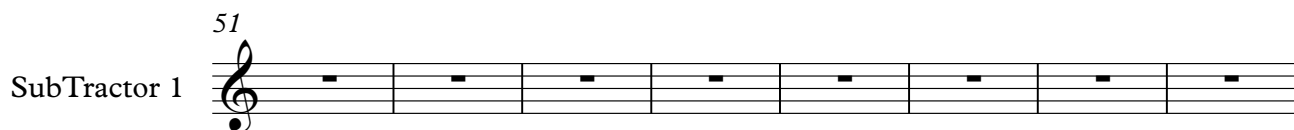
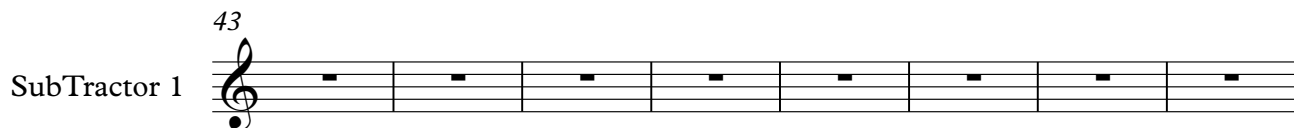
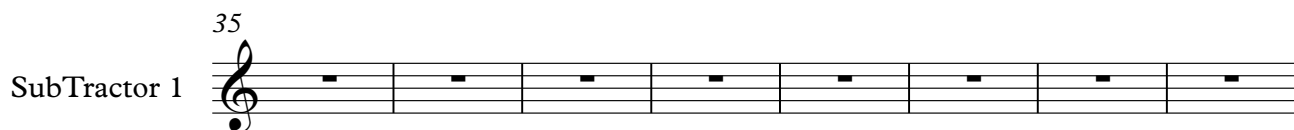
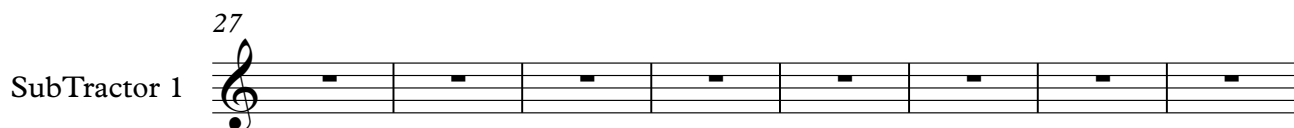
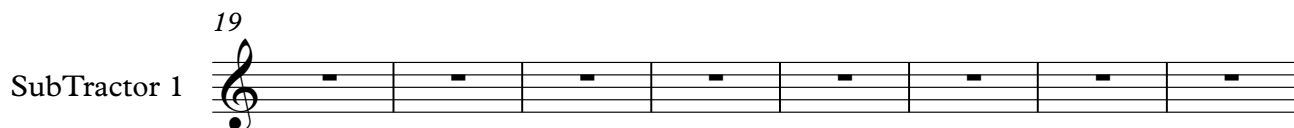
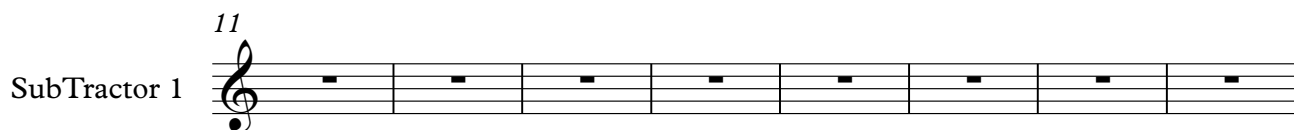
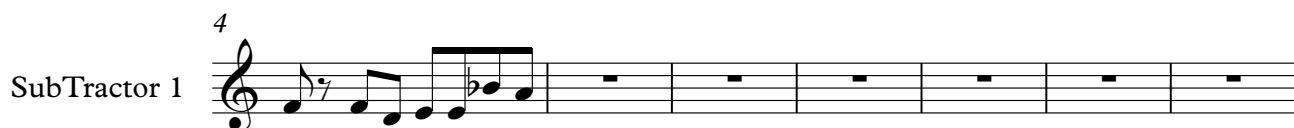


# Gitta - No More Turning Back Melody john

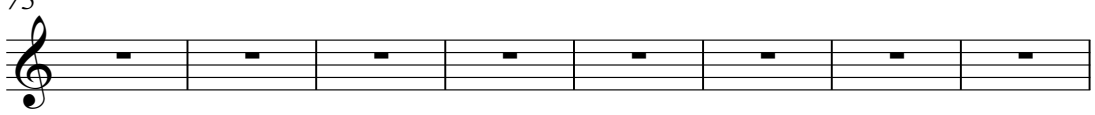
♩ = 133,000244



2

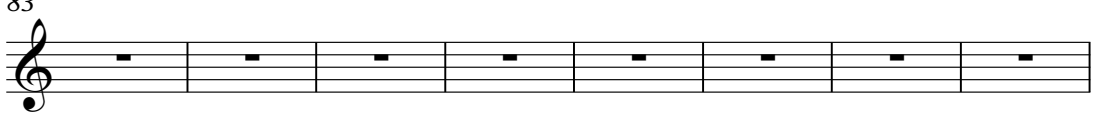
75

SubTractor 1



83

SubTractor 1



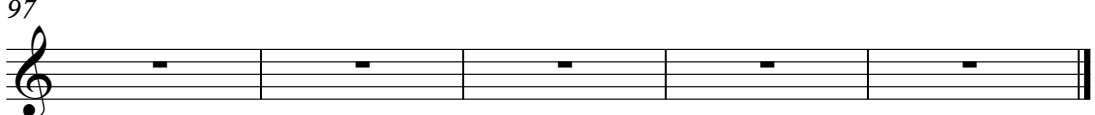
91

SubTractor 1



97

SubTractor 1

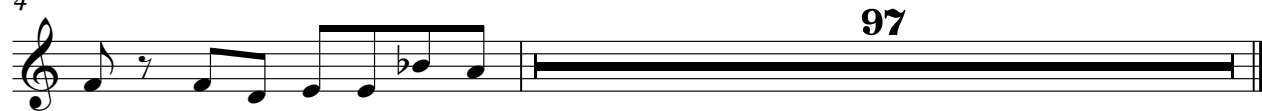


♩ = 133,000244



The first staff of music is written in 4/4 time. It begins with a treble clef and a key signature of one flat (B-flat). The tempo marking is ♩ = 133,000244. The melody consists of three measures: the first measure has a quarter rest followed by quarter notes G4, A4, and Bb4; the second measure has quarter notes C5, Bb4, and A4; the third measure has quarter notes G4, F4, and E4.

4 **97**



The second staff of music is written in 4/4 time. It begins with a treble clef and a key signature of one flat (B-flat). The melody consists of a quarter rest followed by quarter notes G4, A4, and Bb4. This is followed by a long rest that spans the remainder of the staff. The measure number '4' is written above the first measure, and the page number '97' is written above the long rest.