

Gordon Lightfoot - If You Could Read My Mind

♩ = 120,000000

Solo

Combined Tracks

Baritone

Bass 2

Solo

♩ = 120,000000

Tenor 1

3

Combined Tracks

Baritone

Bass 2

Tenor 1

5

Solo

Combined Tracks

Baritone

Bass 2

Solo

Tenor 1

7

Solo

Combined Tracks

Baritone

Bass 2

Solo

Tenor 1

10

Solo

Combined Tracks

Baritone

Bass 2

Solo

Tenor 1

13

Solo

Combined Tracks

Baritone

Bass 2

Solo

Tenor 1

16

Solo

Combined Tracks

Baritone

Bass 2

Solo

Tenor 1

18

Solo

Combined Tracks

Baritone

Bass 2

Solo

Tenor 1

21

Solo

Combined Tracks

Baritone

Bass 2

Solo

Tenor 1

23

Solo

Combined Tracks

Baritone

Bass 2

Solo

Tenor 1

25

Solo

Combined Tracks

Baritone

Bass 2

Solo

Tenor 1

27

Solo

Combined Tracks

Baritone

Bass 2

Solo

Tenor 1

29

Solo

Combined Tracks

Baritone

Bass 2

Solo

Tenor 1

31

Solo

Combined Tracks

Baritone

Bass 2

Solo

Tenor 1

33

Solo

Combined Tracks

Baritone

Bass 2

Solo

Tenor 1

36

Solo

Combined Tracks

Baritone

Bass 2

Solo

Tenor 1

38

Solo

Combined Tracks

Baritone

Bass 2

Solo

Tenor 1

40

Solo

Combined Tracks

Baritone

Bass 2

Solo

Tenor 1

43

Solo

Combined Tracks

Baritone

Bass 2

Solo

Tenor 1

46

Combined Tracks

Baritone

Bass 2

Tenor 1

49

Combined Tracks

Baritone

Bass 2

Tenor 1

52

Solo

Combined Tracks

Baritone

Bass 2

Solo

Tenor 1

55

Solo

Combined Tracks

Baritone

Bass 2

Solo

Tenor 1

58

Solo

Combined Tracks

Baritone

Bass 2

Solo

61

Solo

Combined Tracks

Baritone

Bass 2

Solo

Tenor 1

64

Solo

Combined Tracks

Baritone

Bass 2

Solo

Tenor 1

67

Solo

Combined Tracks

Baritone

Bass 2

Solo

Tenor 1

70

Solo

Combined Tracks

Baritone

Bass 2

Solo

Tenor 1

73

Solo

Combined Tracks

Baritone

Bass 2

Solo

Tenor 1

76

Solo

Combined Tracks

Baritone

Bass 2

Solo

Tenor 1

78

Solo

Combined Tracks

Baritone

Bass 2

Solo

Tenor 1

80

Solo

Combined Tracks

Baritone

Bass 2

Solo

Tenor 1

83

Solo

Combined Tracks

Baritone

Bass 2

Solo

Tenor 1

86

Solo

Combined Tracks

Baritone

Bass 2

Solo

Tenor 1

88

Solo

Combined Tracks

Baritone

Bass 2

Solo

Tenor 1

90

Solo

Combined Tracks

Baritone

Bass 2

Solo

Tenor 1

93

Solo

Combined Tracks

Baritone

Bass 2

Solo

Tenor 1

95

Solo

Combined Tracks

Baritone

Bass 2

Solo

Tenor 1

97

Solo

Combined Tracks

Baritone

Bass 2

Solo

Tenor 1

100

Solo

Combined Tracks

Baritone

Bass 2

Solo

Tenor 1

103

Solo

Combined Tracks

Baritone

Bass 2

Solo

Tenor 1

106

Solo

Combined Tracks

Baritone

Bass 2

Solo

Tenor 1

Combined Tracks

109

Musical staff for Combined Tracks, starting at measure 109. The staff is in treble clef with a 7/8 time signature. It contains a complex melodic line with many beamed notes and rests, ending with a double bar line.

Bass 2

Musical staff for Bass 2, in bass clef. It contains a melodic line with beamed notes and rests, ending with a double bar line.

Tenor 1

Musical staff for Tenor 1, in bass clef. It contains a melodic line with beamed notes and rests, ending with a double bar line.

Gordon Lightfoot - If You Could Read My Mind

Solo

♩ = 120,000000

4

9

14

19

24

29

34

39

43

7

53



58



63



68



73



79



84



88



93



97



102



106



Combined Tracks

Gordon Lightfoot - If You Could Read My Mind

♩ = 120,000000

4

7

10

14

17

20

23

26

29

V.S.

32

36

39

43

47

51

56

62

67

71

75

78

81

85

88

90

94

98

103

107

V.S.

4

Combined Tracks

110

Musical score for 'Combined Tracks' starting at measure 110. The score is written on a single staff with a treble clef and a key signature of one sharp (F#). The music begins with a series of eighth notes: F#4, G4, A4, B4, C5, B4, A4, G4, F#4. This is followed by a half note chord of F#4 and C5. The piece concludes with a whole note chord of F#4 and C5, held for two measures.

Gordon Lightfoot - If You Could Read My Mind

Baritone

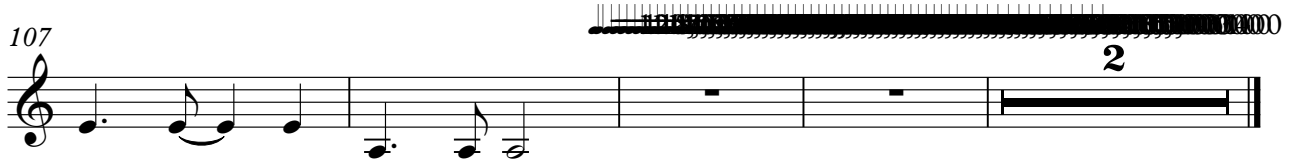
♩ = 120,000000



103



107

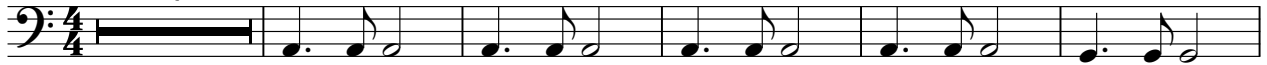


Bass 2

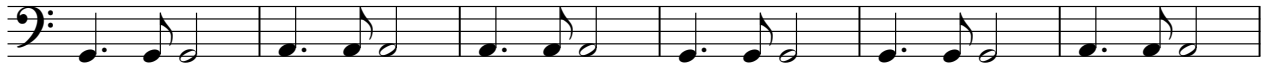
Gordon Lightfoot - If You Could Read My Mind

♩ = 120,000000

2



8



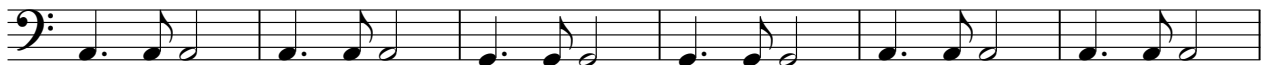
14



20



26



32



38



44



50



56



V.S.

62



68



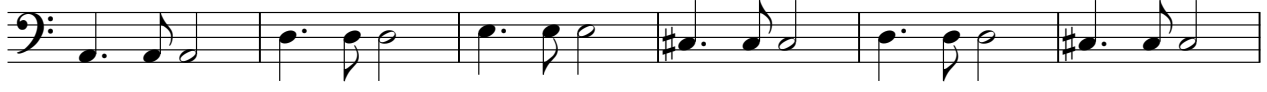
74



80



86



92



97



103



108



Gordon Lightfoot - If You Could Read My Mind

Solo

♩ = 120,000000

4

8

12

16

20

24

29

33

37

41

V.S.

45

7

56

60

64

68

72

2

77

81

85

89

93



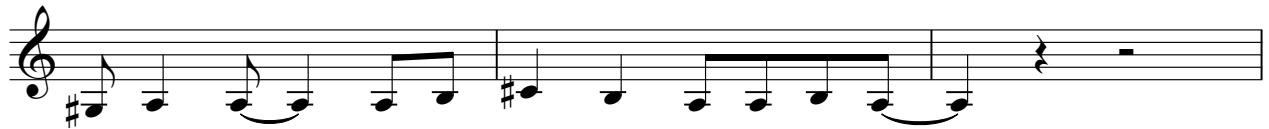
97



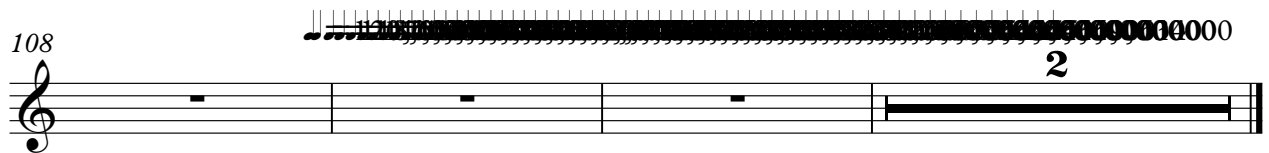
101



105



108



Gordon Lightfoot - If You Could Read My Mind

Tenor 1

♩ = 120,000000

2

8

14

21

26

31

37

43

49

54

4

62



68



73



78



84



90



96



102



107



110



120 130 140 150 160 170 180 190 200 210 220 230 240 250 260 270 280 290 300 310 320 330 340 350 360 370 380 390 400 410 420 430 440 450 460 470 480 490 500