

gourmet sentai bara yarou japan - ending

Super NES

Gourmet Sentai Bara Yarou (Japan)

Sequenced by Robert Hansson

Ending

Tempo: ♩ = 100,000,000

Fingerings: 6, 3

Super NES

Gourmet Sentai Bara Yarou (Japan)

Sequenced by Robert Hansson

Ending

Fingerings: 3, 6, 3

5

Super NES

Gourmet Sentai Bara Yarou (Japan)

Sequenced by Robert Hansson

Ending

7

Super NES

Gourmet Sentai Bara Yarou (Japan)

Sequenced by Robert Hansson

Ending

9

Super NES

Gourmet Sentai Bara Yarou (Japan)

Sequenced by Robert Hansson

Ending

11

Super NES

Gourmet Sentai Bara Yarou (Japan)

Sequenced by Robert Hansson

Ending

13

Super NES

Gourmet Sentai Bara Yarou (Japan)

Sequenced by Robert Hansson

Ending

15

Super NES

Gourmet Sentai Bara Yarou (Japan)

Sequenced by Robert Hansson

Ending

16  
Super NES



6

Musical notation for Super NES, starting at measure 16. The staff is in treble clef. The melody consists of eighth notes: G4, A4, B4, C5, B4, A4, G4, F4, E4, D4, C4. A sixteenth-note triplet of G4, A4, B4 is indicated by a '6' below the notes. The staff ends with a whole rest.

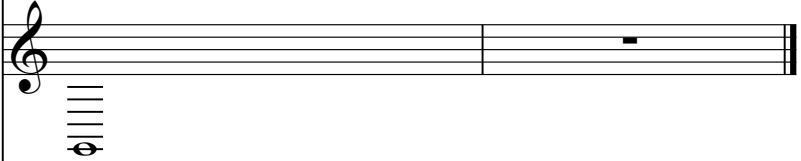
Gourmet Sentai Bara Yarou (Japan)



3 3

Musical notation for Gourmet Sentai Bara Yarou (Japan). The staff is in treble clef. The melody consists of eighth notes: G4, A4, B4, C5, B4, A4, G4, F4, E4, D4, C4. Two triplet markings of '3' are placed below the notes. The staff ends with a whole rest.

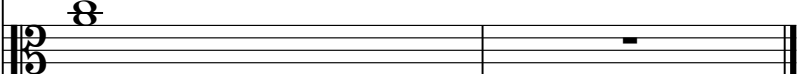
Sequenced by Robert Hansson



φ

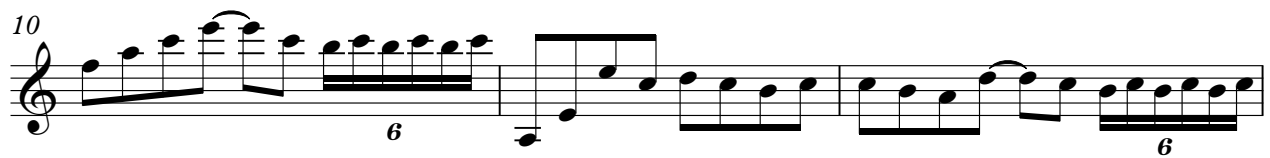
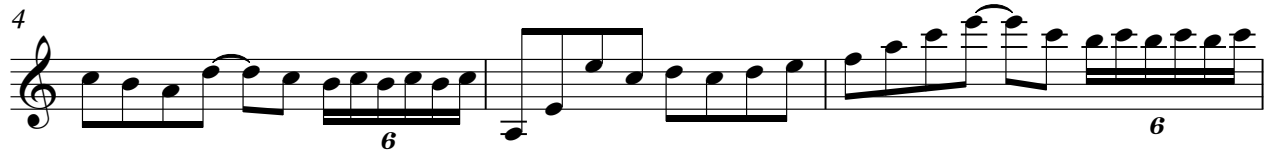
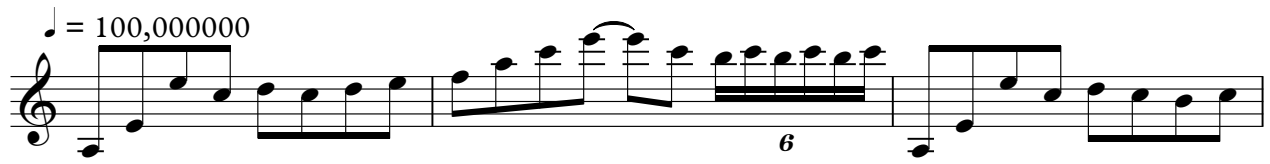
Musical notation for Sequenced by Robert Hansson. The staff is in treble clef. The notation shows a whole rest in the first measure, followed by a whole rest in the second measure. Below the staff, there are five vertical lines representing a guitar fretboard, with a circled phi symbol (φ) below them.

Ending



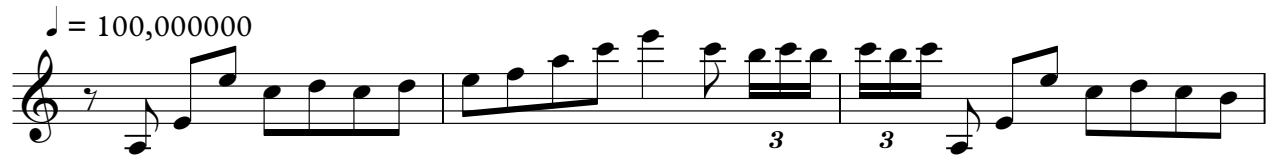
8

Musical notation for Ending. The staff is in bass clef. The notation shows a whole rest in the first measure, followed by a whole rest in the second measure. Above the staff, there is a circled number '8'.



Gourmet Sentai Bara Yarou (Japan) gourmet sentai bara yarou japan - ending

♩ = 100,000000



4



7



10



13



15



Sequenced by Robert Hansson

# gourmet sentai bara yarou japan - ending

♩ = 100,000000

A musical staff with a treble clef and a tempo marking of a quarter note equal to 100,000,000. The staff contains nine measures of guitar tablature. The notes are: G2 (measure 1), G2 (measure 2), G2 (measure 3), F2 (measure 4), G2 (measure 5), G2 (measure 6), G2 (measure 7), F2 (measure 8), and G2 (measure 9). Each note is represented by a vertical line with a letter below it, and the letter is repeated five times to indicate the fretting.

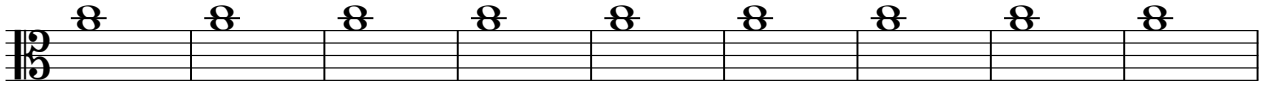
10

A musical staff with a treble clef and a measure number of 10. The staff contains seven measures of guitar tablature. The notes are: G2 (measure 1), G2 (measure 2), F2 (measure 3), G2 (measure 4), G2 (measure 5), G2 (measure 6), and F2 (measure 7). Each note is represented by a vertical line with a letter below it, and the letter is repeated five times to indicate the fretting. The staff ends with a double bar line.

Ending

gourmet sentai bara yarou japan - ending

♩ = 100,000000



A musical staff in bass clef with a key signature of one flat (B-flat). The staff contains eight measures, each with a single chord symbol (a stylized '8' with a horizontal line) positioned above the staff. The chords are: B-flat major (Bb2), B-flat major (Bb2), B-flat major (Bb2), B-flat major (Bb2), B-flat major (Bb2), B-flat major (Bb2), B-flat major (Bb2), and B-flat major (Bb2).

10



A musical staff in bass clef with a key signature of one flat (B-flat). The staff contains seven measures, each with a single chord symbol (a stylized '8' with a horizontal line) positioned above the staff. The chords are: B-flat major (Bb2), B-flat major (Bb2), B-flat major (Bb2), B-flat major (Bb2), B-flat major (Bb2), B-flat major (Bb2), and B-flat major (Bb2). The eighth measure contains a single bar line.