

Green Day - Longview

♩ = 71,000038

drums

Drum notation for measures 1-3 in 4/4 time. The snare drum plays a consistent backbeat pattern. The bass drum plays a steady quarter-note pattern. The hi-hat plays a consistent eighth-note pattern.

4

drums

Drum notation for measures 4-6. The pattern continues from the previous section.

bass

Bass guitar notation for measures 4-6. The fretboard is shown with strings T, A, and B. Fingering numbers 0-4 are indicated for each string.

27.0"
9.1,00
I sit at home

7

drums

Drum notation for measures 7-9. The pattern continues.

bass

Bass guitar notation for measures 7-9. The fretboard is shown with strings T, A, and B. Fingering numbers 0-4 are indicated.

voice

Vocal notation for measures 7-9. The melody is in treble clef with a key signature of one flat. The lyrics "I sit at home" are written below the notes.

10

drums

Drum notation for measures 10-12. The pattern continues.

bass

Bass guitar notation for measures 10-12. The fretboard is shown with strings T, A, and B. Fingering numbers 0-4 are indicated.

voice

Vocal notation for measures 10-12. The melody continues in treble clef with a key signature of one flat.

12

drums

bass

T 4 2 1 2
A 3 1 3 1 0 1
B 4 4 3

voice

15

drums

bass

T 1 3 0 3 4 0 3 1
A 4 2 1 2
B 3 1 3 1 0 1

voice

18

drums

bass

T 1 0
A 4 3
B 4 3 1 3 0 3 4 0 3 1

voice

20

drums

bass

T 4 2 1 2
A 3 1 3 1 0 1
B 4 4 3

voice

23

guitar

drums

bass

voice

25

guitar

drums

bass

voice

28

guitar

drums

bass

voice

51

guitar

drums

bass

voice

53

guitar

drums

bass

voice

56

guitar

drums

bass

voice

59

guitar

drums

bass

voice

T
A
B

1 1 1 1 4 4 4 4 4 4 1 1 3 1 0 1

62

guitar

drums

bass

voice

T
A
B

1 0 4 3 1 3 1 0 1 1 0 4 3 4 4 3

65

guitar

drums

bass

voice

T
A
B

1 3 1 0 1 4 4 3 1 3 1 0 1 3

68

guitar

drums

bass

voice

71

guitar

drums

bass

75

guitar

drums

bass

97

drums

bass

T
A
B

1 3 1 0 1 | 4 1 0 4 3

voice

99

guitar

drums

bass

T
A
B

1 3 0 3 4 0 3 1 | 4 4 4 4 4 4 4 4 4 4

voice

101

guitar

drums

bass

T
A
B

4 4 4 4 4 4 4 4 4 4 | 1 1 1 1 4 4 6 6

voice

104

guitar

drums

bass

voice

107

guitar

drums

bass

voice

110

guitar

drums

bass

voice

113

guitar

drums

bass

voice

116

guitar

drums

bass

voice

119

guitar

drums

bass

Green Day - Longview

guitar

♩ = 71,000038

23

26

31

36

54

59

64

68

73

78

15

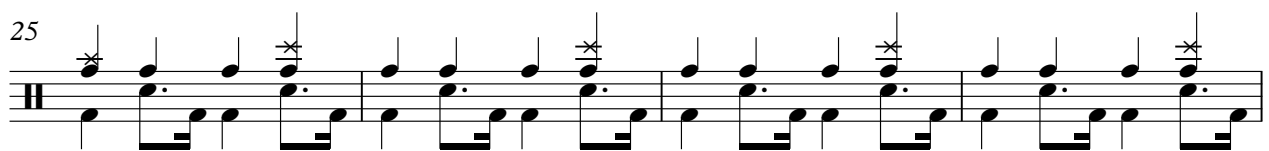
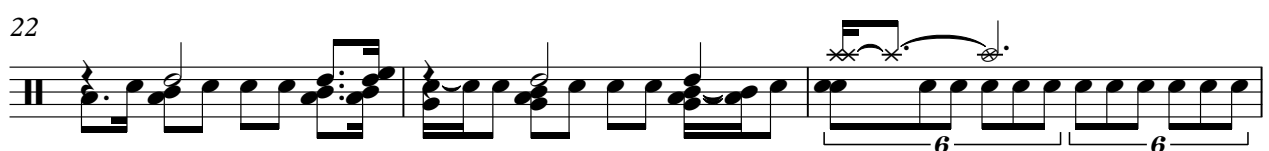
3

V.S.

Green Day - Longview

drums

♩ = 71,000038



V.S.

33



36



39



42



45



48



51



54



58



62



66

70

74

78

81

84

87

90

93

96

99

Musical notation for measure 99, featuring a drum staff with a complex rhythmic pattern. The notation includes a series of eighth notes and sixteenth notes, with a prominent sixteenth-note triplet. A bracket labeled '6' spans the first sixteenth-note triplet, and another bracket labeled '6' spans the second. A third bracket labeled '6' spans the eighth notes, and a fourth bracket labeled '6' spans the final eighth notes. A double bar line is present at the end of the measure.

102

Musical notation for measure 102, featuring a drum staff with a complex rhythmic pattern. The notation includes a series of eighth notes and sixteenth notes, with a prominent sixteenth-note triplet. A double bar line is present at the end of the measure.

106

Musical notation for measure 106, featuring a drum staff with a complex rhythmic pattern. The notation includes a series of eighth notes and sixteenth notes, with a prominent sixteenth-note triplet. A double bar line is present at the end of the measure.

110

Musical notation for measure 110, featuring a drum staff with a complex rhythmic pattern. The notation includes a series of eighth notes and sixteenth notes, with a prominent sixteenth-note triplet. A double bar line is present at the end of the measure.

114

Musical notation for measure 114, featuring a drum staff with a complex rhythmic pattern. The notation includes a series of eighth notes and sixteenth notes, with a prominent sixteenth-note triplet. A double bar line is present at the end of the measure.

118

Musical notation for measure 118, featuring a drum staff with a complex rhythmic pattern. The notation includes a series of eighth notes and sixteenth notes, with a prominent sixteenth-note triplet. A double bar line is present at the end of the measure.

121

Musical notation for measure 121, featuring a drum staff with a complex rhythmic pattern. The notation includes a series of eighth notes and sixteenth notes, with a prominent sixteenth-note triplet. A double bar line is present at the end of the measure.

124

Musical notation for measure 124, featuring a drum staff with a complex rhythmic pattern. The notation includes a series of eighth notes and sixteenth notes, with a prominent sixteenth-note triplet. A double bar line is present at the end of the measure.

127

Musical notation for measure 127, featuring a drum staff with a complex rhythmic pattern. The notation includes a series of eighth notes and sixteenth notes, with a prominent sixteenth-note triplet. A double bar line is present at the end of the measure.

130

Musical notation for measure 130, featuring a drum staff with a complex rhythmic pattern. The notation includes a series of eighth notes and sixteenth notes, with a prominent sixteenth-note triplet. A double bar line is present at the end of the measure.

Green Day - Longview

bass

♩ = 71,000038
3

E				
B				
G		4 3 2 1 0	3 2 1 0	4 3 1
D				
A				
E				
A				

7

T				
A	1 3 0 3 4 0 3 1	4 2 1 2	3 1 3 1 0 1	1 0 3 1 0 3 4 0 3 1
B				

12

T	4 2 1 2			
A		3 1 3 1 0 1	1 0 3 0 3 4 0 3 1	4 2 1 2
B				

17

T				
A	1 3 1 0 1	1 0 4 3	1 3 0 3 4 0 3 1	4 2 1 2
B				

22

T				
A	1 0 4 3	1 3 0 3 4 0 3 1	4	
B	4 4 4 4	4 4 4 4 4 4 4 4 4 4 4 4	1 1 1 1	4 4 6 6

27

T				
A	1 1 1 1		1 1 1 1	
B		4 4 6 6	4 4 6 6	1 1 1 1

32

T				
A		1 3 1 0 1	1 0 4 3	1 3 0 3 4 0 3 1
B	4 4 4 4 4 4 1			

37

T				
A	1 3 1 0 1	1 0 4 3	1 3 0 3 4 0 3 1	4 2 1 2
B				

42

T				
A	1 0 4 3	1 3 0 3 4 0 3 1	4 2 1 2	3 1 3 1 0 1
B	4 4			

47

T				
A	1 3 0 3 4 0 3 1	4 2 1 2	3 1 3 1 0 1	1 0 4 3 1 3 0 3 4 0 3 1
B				

V.S.

T	4				
A					
B	4 4 4 4 4 4 4 4 4 4 4 4	1 1 1 1	4 4	6 6	1 1 1 1
				4 4	6 6

57

T					
A					3 1 0
B	1 1 1 1	4 4	6 6	1 1 1 1	4 4 4 4 4 4 4 4 1
					1

62

T					
A	1 0	3	1	3 1 0	1
B	4	4	4	4 3	1
				4	4 3

67

T					
A	1	3 1 0	1		
B	4	4 4 4 4 4 4 4	1 1 1 1	4 4	6 6
					1 1 1 1

72

T					
A					
B	4 4	6 6	1 1 1 1	4 4	6 6
					1 1 1 1 1

77

T					
A	1 3 1 0	1	1 0	3	1 3 1 0
B	4	4	4 3	1	3 0 3 4 0 3 1
					4 2 1 2

82

T					
A	1 0	3	0 3 4 0 3 1	4 2 1 2	3 1 3 1 0 1
B	4	4	4 3	1	3 0 3 4 0 3 1
					4 4 3

87

T					
A	1 3 0 3 4 0 3 1	4 2 1 2	1 3 1 0 1	1 0	3 0 3 4 0 3 1
B	4	4	4 3	1	3 0 3 4 0 3 1
					4 4 3

92

T					
A	4 2 1 2	3	1 3 1 0 1	1 0	3 0 3 4 0 3 1
B			4 4	4 3	1 3 0 3 4 0 3 1
					4 2 1 2

97

T					
A	1 3 1 0	1	1 0	3	1 3 0 3 4 0 3 1
B	4	4	4 3	1	3 0 3 4 0 3 1
					4

T				
A				
B	4 4 4 4 4 4 4 4 4 4 4 4	1 1 1 1	4 4 6 6	1 1 1 1 4 4 6 6

106

T					
A					
B	1 1 1 1	4 4 6 6	1 1 1 1	4 4 6 6	1 1 1 1 4 4 6 6

112

T				
A				
B	1 1 1 1	4 4 6 6	1 1 1 1	4 4 6 6 1 1 1 1

117

T					
A		1 3 1 0	1 0	1 3 0 3 4 0 3 1	4 2 1 2
B	4 4 4 4 4 4 1	4 4 3	4 3	1 3 0 3 0 3	3

122

T					
A	1 3 1 0	1 0	1 3 0 3 4 0 3 1	4 2 1 2	1 3 1 0 1
B	4 4 3	4 3	1 3 0 3 0 3	3	

127

T				
A	1 0	1 3 0 3 4 0 3 1	4 2 1 2	1 3 1 0 1
B	4 4 3	1 3 0 3 0 3	3	

131

T			
A	1 0	1 3 0 3 4 0 3 1	4 2 1 2
B	4 4 3	1 3 0 3 0 3	3

Green Day - Longview

voice

♩ = 71,000038

8

12

17

21

25

29

37

41

46

50

V.S.

54

58

63

68

14

86

90

94

98

102

106

110

Musical notation for voice, measures 110-113. The notation is on a single staff with a treble clef and a key signature of one flat (B-flat). The melody consists of eighth and quarter notes with various rests. Measure 110 starts with a whole rest. Measure 111 contains a sequence of eighth notes: G4, F4, E4, D4, C4, B3, A3, G3. Measure 112 contains a sequence of eighth notes: F3, E3, D3, C3, B2, A2, G2. Measure 113 contains a sequence of eighth notes: F2, E2, D2, C2, B1, A1, G1, followed by a quarter rest.

114

Musical notation for voice, measures 114-115. The notation is on a single staff with a treble clef and a key signature of one flat (B-flat). Measure 114 contains a sequence of eighth notes: G4, F4, E4, D4, C4, B3, A3, G3. Measure 115 contains a sequence of eighth notes: F3, E3, D3, C3, B2, A2, G2, followed by a quarter rest.

116

Musical notation for voice, measures 116-117. The notation is on a single staff with a treble clef and a key signature of one flat (B-flat). Measure 116 contains a sequence of eighth notes: G4, F4, E4, D4, C4, B3, A3, G3. Measure 117 contains a sequence of eighth notes: F3, E3, D3, C3, B2, A2, G2, followed by a quarter rest. A double bar line is present at the end of measure 117.

16