

# Ireland - Ireland

♩ = 75,774,00082 7 0 5 7 8 1 3 0 0 2 9 5 0 0 7 6 7 9 3 0 3 5 0 0 0 0 6 1 ♩ = 81,090065 ♩ = 81,560081 ♩ = 82,030085 00084

fr. horn(s)

trumpet(s)

trombone(s)

tuba(s)

timpani

cymbals

strings (hi)

strings (bass)

strings (mid)

6 ♩ = 82,960014 ♩ = 82,500084 ♩ = 82,030083 00081

fr. horn(s)

trumpet(s)

trombone(s)

tuba(s)

strings (hi) ♩ = 82,960014 ♩ = 82,960014 ♩ = 82,500084 ♩ = 82,030083 ♩ = 81,560081

strings (bass)

strings (mid)

The image displays a musical score for the piece "Ireland - Ireland". It is arranged for a brass section (French horn, trumpet, trombone, tuba) and a string section (high, bass, and middle strings). The score is written in 4/4 time and features a key signature of one flat (B-flat). The music is divided into two systems. The first system includes parts for the brass instruments, timpani, cymbals, and strings. The second system continues the brass and string parts. The score includes various musical notations such as notes, rests, and dynamic markings. A double bar line is present between the two systems. The tempo is indicated by a quarter note followed by a series of numbers: 75,774,00082 7 0 5 7 8 1 3 0 0 2 9 5 0 0 7 6 7 9 3 0 3 5 0 0 0 0 6 1. The first system ends with a measure containing the number 84. The second system begins with a measure containing the number 6, followed by a series of numbers: 82,960014 82,500084 82,030083 00081. The string section in the second system has a tempo marking: 82,960014 82,960014 82,500084 82,030083 81,560081.

2

11  $\text{♩} = 81,090065$   $\text{♩} = 81,560081$   $\text{♩} = 81,090065$   $\text{♩} = 80,620018$   $\text{♩} = 81,090065$   $\text{♩} = 81,560081$   $\text{♩} = 81,090065$   $\text{♩} = 80,620018$

fr. horn(s)

trumpet(s)

trombone(s)

tuba(s)

strings (hi)

strings (bass)

strings (mid)



17  $\text{♩} = 80,150086$   $\text{♩} = 79,210014$

fr. horn(s)

trumpet(s)

trombone(s)

tuba(s)

timpani

strings (hi)

strings (bass)

strings (mid)

21

fr. horn(s)

trumpet(s)

trombone(s)

tuba(s)

timpani

cymbals

strings (hi)

strings (bass)

strings (mid)

Detailed description: This page of a musical score covers measures 21 through 24. The score is divided into two systems. The first system includes staves for French horn(s), trumpet(s), trombone(s), tuba(s), timpani, and cymbals. The second system includes staves for strings (high), strings (bass), and strings (mid). The music is in 6/4 time, with a key signature of one flat (B-flat). Measure 21 features a complex brass arrangement with a triplet in the trumpet part. Measure 22 shows a change in the brass parts. Measures 23 and 24 continue the brass and string parts, with the strings playing a rhythmic pattern in the high register and a more melodic line in the mid register. The timpani part has a triplet in measure 21. The cymbals part has a single hit in measure 21. The strings (bass) part has a melodic line in measure 21. The strings (mid) part has a melodic line in measure 21.

Ireland - Ireland

fr. horn(s)

♩ = 75,7500000370373190,2500,719,0000000065      ♩ = 81,560081 ♩ = 82,03005000:

6 ♩ = 82,8640009282,96082,500084 ♩ = 82,081,580081

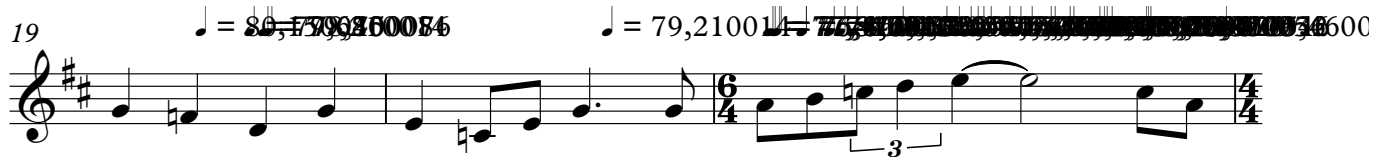
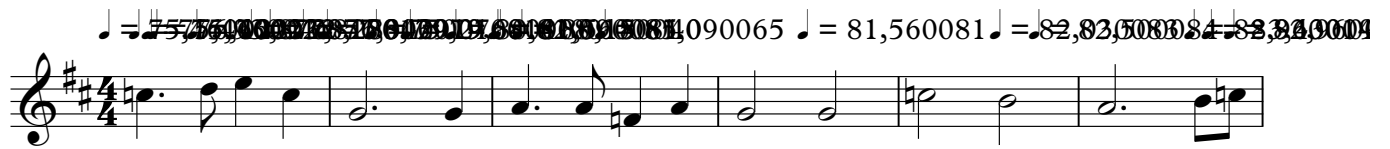
11 ♩ = 81,090065      ♩ = 81,560081      ♩ = 81,09006500181,0900650018

17 ♩ = 80,720084      ♩ = 79,210014

21 ♩ = 75,7500000370373190,2500,719,00000000650050

# Ireland - Ireland

trumpet(s)




trombone(s) Ireland - Ireland

~~5,7,3,0,6,9,2,5,0,8,9,0,2,9~~ ~~7,8,7,9,0,1,4,6,8,0,0,0,3,0~~ ~~90065~~ ♪ = 81,560081 ♪ = 82,080800



6 ~~8,2,6,6,0,0,0,0~~ ♪ = 82,500084 ♪ = 83,050081 ♪ = 81,090065




12 ♪ = 81,560081 ♪ = 81,080050 ♪ = 81,0850090



18 ♪ = 80,79000076 ♪ = 79,2100175



22 ~~7,7,4,5,0,0,0,0~~ ~~4,6,8,0,0,3,0~~ 50031



tuba(s)

# Ireland - Ireland

♩ = 81,560081 ♩ = 82,835083 ♩ = 83,940084

7 ♩ = 82,500084 ♩ = 82,500084 ♩ = 81,090065 ♩ = 81,560081

13 ♩ = 81,890065 ♩ = 82,500084 ♩ = 83,940084

20 ♩ = 79,210054







# Ireland - Ireland

strings (hi)

Musical score for strings (hi) in 4/4 time, featuring guitar tab notation above the staff. The score is divided into systems, with measure numbers 7, 13, 19, and 22 indicated. The key signature is one flat (B-flat), and the time signature is 4/4. The score includes various musical notations such as notes, rests, and articulation marks. There are several instances of obscured guitar tab notation at the beginning of the first system, above measure 1, and at the start of measures 19 and 22. Measure 19 includes a change in time signature to 6/4 and then back to 4/4. A double bar line with a '2' above it is present at the end of the piece.

7

13

19

22



