

# Greenday - 2000 Light Years Away

♩ = 192,000000

DRUMS

OVERDRIVE

SLAPBASS 1

BRIGHTNESS

5

8

11

DRUMS

OVERDRIVE

SLAPBASS 1

BRIGHTNESS

Detailed description of measures 11-13: The score consists of four staves. The DRUMS staff shows a consistent rhythmic pattern with asterisks above the first and third measures. The OVERDRIVE staff is a guitar tab with fret numbers (1, 3) and string numbers (T, A, B). The SLAPBASS 1 staff shows a bass line with slurs and accents. The BRIGHTNESS staff shows a treble clef with notes and rests.

14

DRUMS

OVERDRIVE

SLAPBASS 1

BRIGHTNESS

Detailed description of measures 14-16: Similar to the previous system, this system covers measures 14-16. The DRUMS staff has asterisks above the first and third measures. The OVERDRIVE staff continues the guitar tab. The SLAPBASS 1 staff shows the bass line. The BRIGHTNESS staff shows the treble clef part.

17

DRUMS

OVERDRIVE

SLAPBASS 1

BRIGHTNESS

Detailed description of measures 17-19: This system covers measures 17-19. The DRUMS staff features asterisks above the first and third measures, and a double bar line with a repeat sign in the second measure. The OVERDRIVE staff includes fret numbers and string numbers. The SLAPBASS 1 staff shows the bass line. The BRIGHTNESS staff shows the treble clef part.

20

DRUMS

OVERDRIVE

SLAPBASS 1

BRIGHTNESS

Detailed description of measures 20-22: This system covers measures 20, 21, and 22. The DRUMS staff shows a complex rhythmic pattern with various note values and rests. The OVERDRIVE section includes guitar tabs for Treble (T), Amp (A), and Bass (B) channels. The SLAPBASS 1 staff features a bass line with slaps and notes. The BRIGHTNESS staff contains a treble clef staff with notes and rests.

23

DRUMS

OVERDRIVE

SLAPBASS 1

BRIGHTNESS

Detailed description of measures 23-25: This system covers measures 23, 24, and 25. The DRUMS staff continues with a rhythmic pattern, including asterisks above some notes. The OVERDRIVE section includes guitar tabs for Treble (T), Amp (A), and Bass (B) channels. The SLAPBASS 1 staff features a bass line with slaps and notes. The BRIGHTNESS staff contains a treble clef staff with notes and rests.

26

DRUMS

OVERDRIVE

SLAPBASS 1

BRIGHTNESS

Detailed description of measures 26-28: This system covers measures 26, 27, and 28. The DRUMS staff continues with a rhythmic pattern, including asterisks above some notes. The OVERDRIVE section includes guitar tabs for Treble (T), Amp (A), and Bass (B) channels. The SLAPBASS 1 staff features a bass line with slaps and notes. The BRIGHTNESS staff contains a treble clef staff with notes and rests.

29

DRUMS

OVERDRIVE

SLAPBASS 1

BRIGHTNESS

Detailed description of measures 29-31: This system covers measures 29, 30, and 31. The DRUMS staff shows a complex rhythmic pattern with various note values and rests. The OVERDRIVE staff is a three-line guitar tab with strings T, A, and B, containing fret numbers and rhythmic markings. The SLAPBASS 1 staff shows a bass line with slurs and accents. The BRIGHTNESS staff is a treble clef staff with notes and rests.

32

DRUMS

OVERDRIVE

SLAPBASS 1

BRIGHTNESS

Detailed description of measures 32-34: This system covers measures 32, 33, and 34. The DRUMS staff continues the rhythmic pattern with some 'x' marks indicating specific drum sounds. The OVERDRIVE staff shows a continuation of the guitar tab with various fret numbers and rhythmic markings. The SLAPBASS 1 staff shows a bass line with slurs and accents. The BRIGHTNESS staff shows a treble clef staff with notes and rests.

35

DRUMS

OVERDRIVE

SLAPBASS 1

BRIGHTNESS

Detailed description of measures 35-37: This system covers measures 35, 36, and 37. The DRUMS staff continues the rhythmic pattern with some 'x' marks. The OVERDRIVE staff shows a continuation of the guitar tab with various fret numbers and rhythmic markings. The SLAPBASS 1 staff shows a bass line with slurs and accents. The BRIGHTNESS staff is a treble clef staff with notes and rests.

38

DRUMS

OVERDRIVE

SLAPBASS 1

BRIGHTNESS

41

DRUMS

OVERDRIVE

SLAPBASS 1

BRIGHTNESS

44

DRUMS

OVERDRIVE

SLAPBASS 1

BRIGHTNESS

47

DRUMS

OVERDRIVE

T	3	3	3	3	3	3	3	3	3	3	3	0	0	0	0	0	2	3
A	3	3	3	3	3	3	3	3	3	3	3	0	0	0	0	0	1	3
B	1	1	1	1	1	3	3	3	3	3	3	3	3	3	3	3	0	1

SLAPBASS 1

BRIGHTNESS

50

DRUMS

OVERDRIVE

T	3	3	3	3	1	3	0	0	0	0	3	3	3	3	3	3	3	3
A	3	3	3	3	0	0	0	0	0	3	3	3	3	3	3	3	3	3
B	1	1	1	1	3	0	3	3	3	1	1	1	1	1	1	1	1	1

SLAPBASS 1

BRIGHTNESS

53

DRUMS

OVERDRIVE

T	6	6	6	6	6	6	3	3	3	3	3	3	2	3	3	3	3	3
A	6	6	6	6	6	6	3	3	3	3	3	3	1	3	3	3	3	3
B	6	6	6	6	6	6	1	1	1	1	1	1	0	1	1	1	1	1

SLAPBASS 1

BRIGHTNESS

56

DRUMS

OVERDRIVE

T	2	3	3	3	2	3	3	0	0	0	0	0	2	3	3	3	1	3	0	3
A	1	3	3	3	1	3	3	0	0	0	0	0	1	3	3	3	3	3	3	0
B	0	1	1	1	0	1	1	3	3	3	3	3	0	1	1	1	1	1	3	0

SLAPBASS 1

BRIGHTNESS

59

DRUMS

OVERDRIVE

T	0	0	3	3	3	3	3	3	3	6	6	6	6	6	6	3
A	0	0	3	3	3	3	3	3	3	6	6	6	6	6	6	3
B	3	3	1	1	1	1	1	1	1	6	6	6	6	6	6	1

SLAPBASS 1

BRIGHTNESS

62

DRUMS

OVERDRIVE

T	3	3	3	3	3	3	3	0	3	3	3	3	3	3	3
A	3	3	3	3	3	3	3	0	3	3	3	3	3	3	3
B	1	1	1	1	1	1	1	3	1	1	1	1	1	1	1

SLAPBASS 1

BRIGHTNESS

65

DRUMS

OVERDRIVE

SLAPBASS 1

BRIGHTNESS

68

DRUMS

OVERDRIVE

SLAPBASS 1

71

DRUMS

OVERDRIVE

SLAPBASS 1



74

DRUMS

SLAPBASS 1

77

DRUMS

OVERDRIVE

T  
A  
B

SLAPBASS 1

BRIGHTNESS

80

DRUMS

SLAPBASS 1

BRIGHTNESS

83

DRUMS

OVERDRIVE

SLAPBASS 1

BRIGHTNESS

20 20 20 20 17 17 16 16 13 13 12 12 10 10 8 8

86

DRUMS

OVERDRIVE

SLAPBASS 1

BRIGHTNESS

7 7 8 8 10 10 12 12 13 13 13 13 17 20 24 20

0	0	0	0	0	2	3
0	0	0	0	0	1	3
3	3	3	3	3	0	1

88

DRUMS

OVERDRIVE

SLAPBASS 1

BRIGHTNESS

3	3	3	3	1	3	0	0	0	0	3	3	3	3	3	3
3	3	3	3	0	2	0	0	0	3	3	3	3	3	3	3
1	1	1	1	3	0	3	3	3	1	1	1	1	1	1	1



100

DRUMS

OVERDRIVE

SLAPBASS 1

BRIGHTNESS

103

DRUMS

OVERDRIVE

SLAPBASS 1

BRIGHTNESS

106

DRUMS

OVERDRIVE

SLAPBASS 1

109 13

DRUMS

OVERDRIVE

T	3	3
A	3	3
B	1	1

SLAPBASS 1

110

DRUMS

# Greenday - 2000 Light Years Away

## DRUMS

♩ = 192,000000

6

10

14

18

22

26

30

34

38

V.S.

42



46



50



54



58



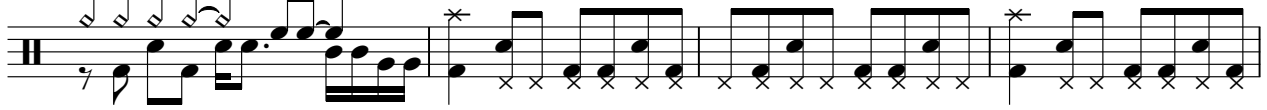
62



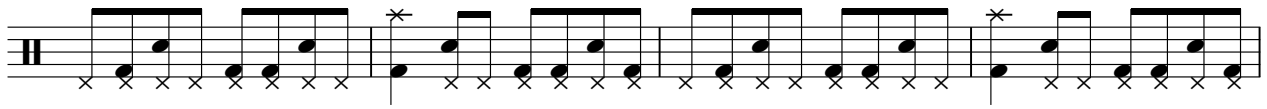
66



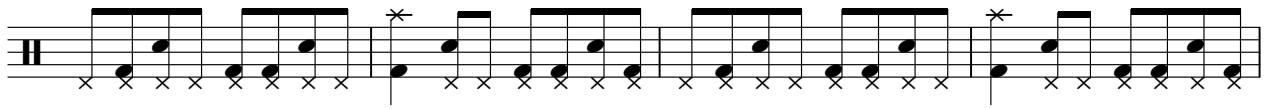
70



74



78



DRUMS

82

Musical notation for drum part 82-85. The staff shows a sequence of notes and rests, with asterisks indicating specific drum sounds. The notation is written on a single staff with a double bar line at the beginning.

86

Musical notation for drum part 86-89. The staff shows a sequence of notes and rests, with asterisks indicating specific drum sounds. The notation is written on a single staff with a double bar line at the beginning.

90

Musical notation for drum part 90-93. The staff shows a sequence of notes and rests, with asterisks indicating specific drum sounds. The notation is written on a single staff with a double bar line at the beginning.

94

Musical notation for drum part 94-97. The staff shows a sequence of notes and rests, with asterisks indicating specific drum sounds. The notation is written on a single staff with a double bar line at the beginning.

98

Musical notation for drum part 98-101. The staff shows a sequence of notes and rests, with asterisks indicating specific drum sounds. The notation is written on a single staff with a double bar line at the beginning.

102

Musical notation for drum part 102-105. The staff shows a sequence of notes and rests, with asterisks indicating specific drum sounds. The notation is written on a single staff with a double bar line at the beginning.

106

Musical notation for drum part 106-108. The staff shows a sequence of notes and rests, with asterisks indicating specific drum sounds. The notation is written on a single staff with a double bar line at the beginning.

109

Musical notation for drum part 109-112. The staff shows a sequence of notes and rests, with asterisks indicating specific drum sounds. The notation is written on a single staff with a double bar line at the beginning. A large number '2' is placed at the end of the staff.





OVERDRIVE

T	3 3 3 3 3		3 3 3 3 3		0 0 0 0 0 2 3
A	3 3 3 3 3 3	3 3 3 3 3 3	3 3 3 3 3	3 3 3 3 3 3	0 0 0 0 0 1 3
B	1 1 1 1 1 1	1 1 1 1 1 1	1 1 1 1 3	1 1 1 1 1 1	3 3 3 3 3 0 1

50

T	3 3 3 3 0 2	0 0			
A	3 3 3 3 3 0	0 0	3	3 3 3 3 3 3	
B	1 1 1 1 3	3 3	1	1 1 1 1 1 1	6 6 6 6 6 6 3

54

T		2 3 3 3 2 3 3 3	2 3 3 3 2 3 3	0 0 0 0 0 2 3
A	3 3 3 3 3 3	1 3 3 3 1 3 3 3	1 3 3 3 1 3 3 3	0 0 0 0 0 1 3
B	1 1 1 1 1 1	0 1 1 1 0 1 1 1	0 1 1 1 0 1 1 3	3 3 3 3 3 0 1

58

T	3 3 3 3 0 2	0 0			
A	3 3 3 3 3 0	0 0	3	3 3 3 3 3 3	
B	1 1 1 1 3	3 3	1	1 1 1 1 1 1	6 6 6 6 6 6 3

62


T		3 3 3 3 0		3 3 3 3 0
A	3 3 3 3 3 3	3 3 3 3 3 3	0	3 3 3 3 3 3
B	1 1 1 1 1 1	1 1 1 1 3 3	3	1 1 1 1 1 1

66

T		3 3 3 3 0		3 3 3 3 0
A	3 3 3 3 3 3	3 3 3 3 3 3	0	3 3 3 3 3 3
B	1 1 1 1 1 1	1 1 1 1 3 3	3	1 1 1 1 1 1


70

5

T				1	1 6 1 1	3 4
A	3 3 3 3 3 3	3				3
B	1 1 1 1 1 1	1				

79

6

T		20 20 20 20 17 17 16 16 13 13 12 12 10 10 8 8	7 7 8 8 10 10 12 12 13 13 13 13 17 20 24 20
A			
B			

87

T	0 0 0 0 0 2 3	3 3 3 3 0 2	0 0	
A	0 0 0 0 0 1 3	3 3 3 3 0	0 0	3 3 3 3 3 3
B	3 3 3 3 3 0 1	1 1 1 1 3	3 3	1 1 1 1 1 1

91

T		2 3 3 3 2 3 3 3	2 3 3 3 2 3 3
A	1 1 1 1 1 1 3	1 3 3 3 1 3 3 3	1 3 3 3 1 3 3 3
B	1 1 1 1 1 1 3	0 1 1 1 0 1 1 1	0 1 1 1 0 1 1 3

T	0	0	0	0	0	2	3	3	3	3	3	0	2	0	0						
A	0	0	0	0	0	1	3	3	3	3	3	0	0	0	0	3	3	3	3	3	3
B	3	3	3	3	3	0	1	1	1	1	1	3	3	3	1	1	1	1	1	1	

99

T														3	3	3	3	0						
A	1	1	1	1	1	1	3	3	3	3	3	3	3	3	3	3	3	3	3					
B	1	1	1	1	1	1	3	3	3	3	3	3	3	1	1	1	1	3	3	3	3	3	3	3

103

T	3	3	3	3	0							3	3	3	3	0						
A	3	3	3	3	0	3	3	3	3	3	3	3	3	3	3	0	3	3	3	3	3	3
B	1	1	1	1	3	1	1	1	1	1	1	1	1	1	1	3	1	1	1	1	1	1

107

T	3	3	3	3	0							3	3	<b>3</b>							
A	3	3	3	3	0	3	3	3	3	3	3	3	3	-----							
B	1	1	1	1	3	1	1	1	1	1	1	1	1	-----							

# Greenday - 2000 Light Years Away

## SLAPBASS 1

♩ = 192,000000

2

7

11

15

19

23

27

31

35

39

V.S.





BRIGHTNESS

GreenDay - 2000 Light Years Away

♩ = 192,000000

9

14

19

23

28

32

40

45

49

53

4

## BRIGHTNESS

