

Greenday - Christie Road

♩ = 126,000130

DRUMS

STEEL GTR

FINGERDBAS

VOICE OOHS

4

DRUMS

STEEL GTR

FINGERDBAS

VOICE OOHS

7

DRUMS

STEEL GTR

STEEL GTR

FINGERDBAS

VOICE OOHS

Detailed description of the musical score for measures 7-9: The score is for a 4/4 piece. Measure 7 begins with a drum fill (marked with asterisks) followed by a steady drum pattern. The first STEEL GTR part plays a complex, multi-voiced chordal texture. The second STEEL GTR part has a more sparse, melodic line. The FINGERDBAS part plays a melodic sequence of eighth notes. The VOICE OOHS part has a short melodic phrase consisting of several eighth notes.

10

DRUMS

STEEL GTR

FINGERDBAS

VOICE OOHS

Detailed description of the musical score for measures 10-12: Measure 10 starts with a drum fill (marked with asterisks) followed by a steady drum pattern. The first STEEL GTR part continues with a complex, multi-voiced chordal texture. The second STEEL GTR part continues with a sparse, melodic line. The FINGERDBAS part continues with a melodic sequence of eighth notes. The VOICE OOHS part has a short melodic phrase consisting of several eighth notes.

13

DRUMS

STEEL GTR

FINGERDBAS

VOICE OOHS

16

DRUMS

STEEL GTR

STEEL GTR

FINGERDBAS

VOICE OOHS

18

DRUMS

STEEL GTR

STEEL GTR

FINGERDBAS

SOLOVOX

VOICE OOHS

21

DRUMS

STEEL GTR

STEEL GTR

FINGERDBAS

SOLOVOX

VOICE OOHS

23

DRUMS

STEEL GTR

STEEL GTR

FINGERDBAS

SOLOVOX

VOICE OOHS

25

DRUMS

STEEL GTR

STEEL GTR

FINGERDBAS

SOLOVOX

VOICE OOHS

27

DRUMS

STEEL GTR

STEEL GTR

FINGERDBAS

SOLOVOX

VOICE OOHS

29

DRUMS

STEEL GTR

STEEL GTR

FINGERDBAS

SOLOVOX

VOICE OOHS

♩ = 138,000824

31 $\text{♩} = 114,001251$ $\text{♩} = 110,000916$ $\text{♩} = 114,001251$ 7

DRUMS

STEEL GTR

FINGERDBAS

SOLOVOX

VOICE OOHS

Detailed description of the first system (measures 31-33):

- DRUMS:** Measure 31 has a snare drum hit. Measure 32 has a bass drum hit. Measure 33 has a snare drum hit.
- STEEL GTR:** Measure 31 has a chord with notes G4, B4, D5. Measure 32 has a chord with notes G4, B4, D5. Measure 33 has a chord with notes G4, B4, D5.
- FINGERDBAS:** Measure 31 has a bass note G2. Measure 32 has a bass note G2. Measure 33 has a bass note G2.
- SOLOVOX:** Measure 31 has a melodic line starting on G4. Measure 32 has a melodic line starting on G4. Measure 33 has a melodic line starting on G4.
- VOICE OOHS:** Measure 31 has a melodic line starting on G4. Measure 32 has a melodic line starting on G4. Measure 33 has a melodic line starting on G4.

34 $\text{♩} = 126,000130$ $\text{♩} = 126,000130$ $\text{♩} = 126,000130$

DRUMS

STEEL GTR

FINGERDBAS

VOICE OOHS

Detailed description of the second system (measures 34-36):

- DRUMS:** Measure 34 has a snare drum hit. Measure 35 has a snare drum hit. Measure 36 has a snare drum hit.
- STEEL GTR:** Measure 34 has a chord with notes G4, B4, D5. Measure 35 has a chord with notes G4, B4, D5. Measure 36 has a chord with notes G4, B4, D5.
- FINGERDBAS:** Measure 34 has a bass note G2. Measure 35 has a bass note G2. Measure 36 has a bass note G2.
- VOICE OOHS:** Measure 34 has a melodic line starting on G4. Measure 35 has a melodic line starting on G4. Measure 36 has a melodic line starting on G4.

37

DRUMS

STEEL GTR

FINGERDBAS

VOICE OOHS

40

DRUMS

STEEL GTR

STEEL GTR

FINGERDBAS

VOICE OOHS

43

DRUMS

STEEL GTR

FINGERDBAS

VOICE OOHS

46

DRUMS

STEEL GTR

STEEL GTR

FINGERDBAS

VOICE OOHS

49

DRUMS

STEEL GTR

STEEL GTR

FINGERDBAS

SOLOVOX

VOICE OOHS

51

DRUMS

STEEL GTR

STEEL GTR

FINGERDBAS

SOLOVOX

VOICE OOHS

53

DRUMS

STEEL GTR

STEEL GTR

FINGERDBAS

SOLOVOX

VOICE OOHS

55

DRUMS

STEEL GTR

STEEL GTR

FINGERDBAS

SOLOVOX

VOICE OOHS

57

DRUMS

STEEL GTR

STEEL GTR

FINGERDBAS

SOLOVOX

VOICE OOHS

59

DRUMS

STEEL GTR

STEEL GTR

FINGERDBAS

SOLOVOX

VOICE OOHS

61

♩ = 138,000824

DRUMS

STEEL GTR

STEEL GTR

FINGERDBAS

SOLOVOX

VOICE OOHS

♩ = 138,000824

63

♩ = 114,001251

♩ = 110,0009160

♩ = 1000350

♩ = 128,000000

DRUMS

STEEL GTR

FINGERDBAS

SOLOVOX

VOICE OOHS

♩ = 114,001251

♩ = 110,0009160

♩ = 1000350

♩ = 128,000000

67

DRUMS

STEEL GTR

FINGERDBAS

70

DRUMS

STEEL GTR

FINGERDBAS

72

DRUMS

STEEL GTR

FINGERDBAS

74

DRUMS

STEEL GTR

FINGERDBAS

76

DRUMS

STEEL GTR

FINGERDBAS

78

DRUMS

STEEL GTR

FINGERDBAS

VOICE OOHS

81

DRUMS

STEEL GTR

FINGERDBAS

VOICE OOHS

84

DRUMS

STEEL GTR

FINGERDBAS

VOICE OOHS

86

DRUMS

STEEL GTR

FINGERDBAS

VOICE OOHS

89 17

DRUMS

STEEL GTR

FINGERDBAS

VOICE OOHS

92

DRUMS

STEEL GTR

FINGERDBAS

SOLOVOX

VOICE OOHS

94

DRUMS

STEEL GTR

FINGERDBAS

SOLOVOX

VOICE OOHS

96

DRUMS

STEEL GTR

FINGERDBAS

SOLOVOX

VOICE OOHS

98

DRUMS

STEEL GTR

FINGERDBAS

SOLOVOX

VOICE OOHS

101

DRUMS

STEEL GTR

FINGERDBAS

VOICE OOHS

104

DRUMS

STEEL GTR

FINGERDBAS

VOICE OOHS

106

DRUMS

STEEL GTR

FINGERDBAS

VOICE OOHS

108

DRUMS

STEEL GTR

FINGERDBAS

VOICE OOHS

110

DRUMS

STEEL GTR

FINGERDBAS

VOICE OOHS

111

DRUMS

STEEL GTR

FINGERDBAS

Greenday - Christie Road

DRUMS

♩ = 126,000130

5

9

13

17

21

25

29

♩ = 138,000824 ♩ = 114,001251 ♩ = 110,000916

33

37

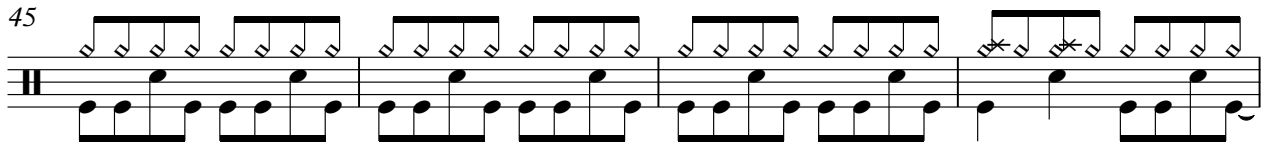
V.S.

DRUMS

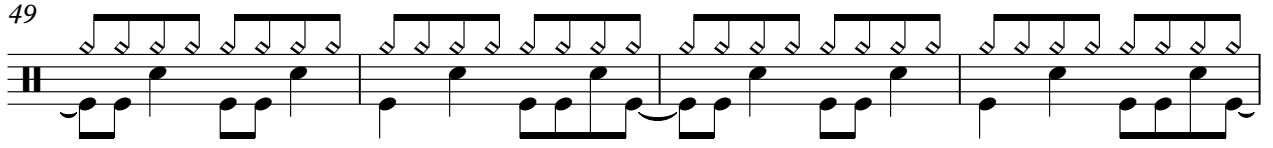
41



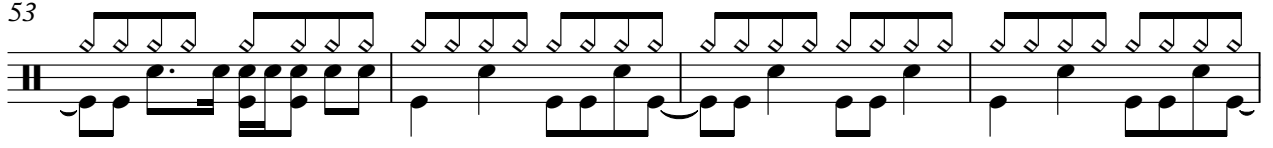
45



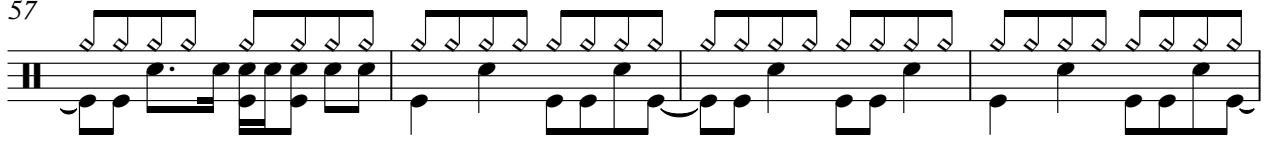
49



53

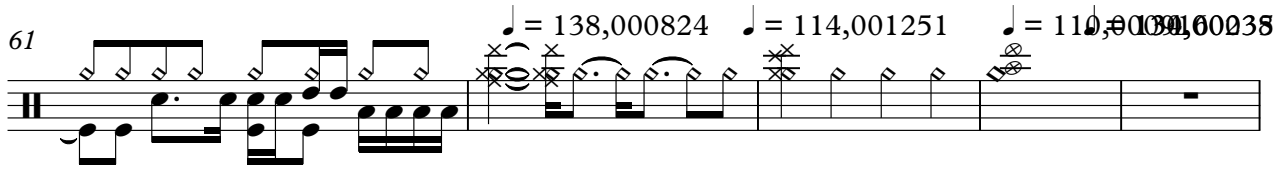


57



61


$\text{♩} = 138,000824$ $\text{♩} = 114,001251$ $\text{♩} = 110,001380$ $\text{♩} = 100,00380$



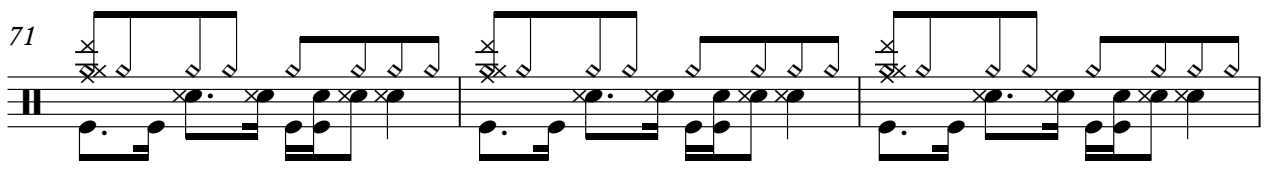
66

$\text{♩} = 128,000000$

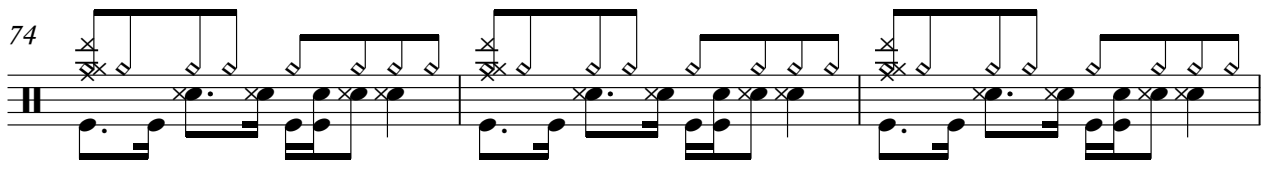
2



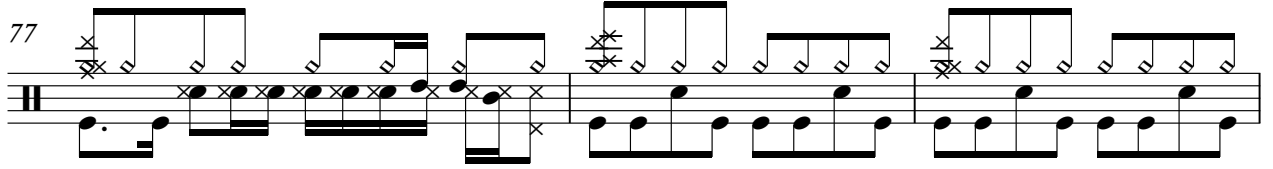
71



74



77



DRUMS

This page of drum notation for guitar consists of ten systems of music, each starting with a measure number on the left. The notation is written on a five-line staff with a double bar line at the beginning of each system. The notes and rests are placed on the lines and spaces to represent different drum sounds. Measure numbers are: 80, 84, 88, 92, 95, 98, 102, 105, 108, and 111. The notation includes various rhythmic patterns, such as eighth and sixteenth notes, and rests. Some notes have 'x' marks above them, indicating specific drum sounds or techniques. The notation is dense and detailed, providing a clear guide for playing the drum part.

Greenday - Christie Road

STEEL GTR

♩ = 126,000130

5

9

12

16

20

24

28

♩ = 138,000824 ♩ = 114,001125 ♩ = 100,000916

34

♩ = 126,000130

38

V.S.

42

46

50

54

58

♩ = 138,000824

63

♩ = 114,001251 ♩ = 110,000916 ♩ = 130,000288 ♩ = 130,000000

68

72

76

80

83

86

89

92

96

100

104

108

111

Greenday - Christie Road

STEEL GTR

♩ = 126,000130

7 6

16 2

21 2

26 2 ♩ = 138,000824 ♩ = 144,00112500916

33 6 6

48 2

53 2

58 2 ♩ = 138,000824

63 ♩ = 114,001251 ♩ = 110,000916 ♩ = 130,000350 ♩ = 28,000000

48

♩ = 126,000130



FINGERDBAS

48

52

56

60

$\text{♩} = 138,000824$ $\text{♩} = 114,0010500916$ $\text{♩} = 130,00035$

66

$\text{♩} = 128,000000$

3

73

78

82

86

90

FINGERDBAS

94



98



102



106



110



♩ = 126,000130

17

22

27

♩ = 138,000824 ♩ = 114,001251

32

♩ = 110,000916

16

52

58

♩ = 138,000824

63

♩ = 114,001251 ♩ = 110,000916 ♩ = 138,000824 ♩ = 110,000916

27

94

98

14

Greenday - Christie Road

VOICE OOHS

♩ = 126,000130

6

11

15

20

26 ♩ = 138,000824

31 ♩ = 114,001251 ♩ = 110,000916

36

40

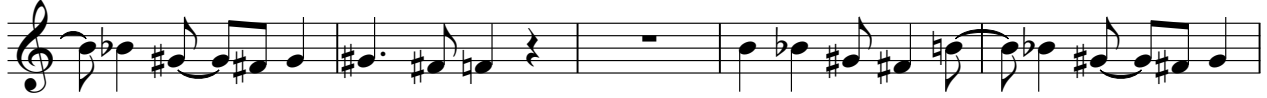
45

VOICE OOHS

50



55



60

♩ = 138,000824 ♩ = 114,001251 ♩ = 110,000916 ♩ = 130,000350



66

♩ = 128,000000
12



82



87



92



97



103



108

