

# Guess Who (Chad Allan And The Expressions) - Happy

♩ = 120,000000

Drums (BB)

Piano (BB)

Melody (BB)

Bass (BB)

Strings (BB)

♩ = 120,000000

5

Drums (BB)

Piano (BB)

Melody (BB)

Bass (BB)

8

Drums (BB)

Piano (BB)

Melody (BB)

Bass (BB)

Strings (BB)

11

Drums (BB)

Piano (BB)

Melody (BB)

Bass (BB)

14

Drums (BB)

Piano (BB)

Melody (BB)

Bass (BB)

Strings (BB)

17

Drums (BB)

Piano (BB)

Melody (BB)

Bass (BB)

Strings (BB)

20

Drums (BB)

Piano (BB)

Melody (BB)

Bass (BB)

22

Drums (BB)

Piano (BB)

Melody (BB)

Bass (BB)

Strings (BB)

## Drums (BB)

## Guess Who (Chad Allan And The Expressions) - Happy

♩ = 120,000000

1

5

9

13

17

21

♩ = 120,000000

Measures 1-6 of the piano introduction. The key signature is B-flat major (two flats). The time signature is 4/4. The tempo is marked as 120,000000. The notation shows a grand staff with a treble and bass clef. Measures 1 and 2 are marked with a '2' above the staff, indicating a second ending. The bass line starts with a whole note chord of B-flat and F, followed by a series of chords and a melodic line in the right hand.

8

Measures 7-13 of the piano introduction. The notation continues the bass line and right hand melody from the previous system. Measure 8 is marked with an '8' above the staff. The bass line features a series of chords and a melodic line in the right hand.

14

Measures 14-18 of the piano introduction. The notation continues the bass line and right hand melody. Measure 14 is marked with a '14' above the staff. The bass line features a series of chords and a melodic line in the right hand.

19

Measures 19-24 of the piano introduction. The notation continues the bass line and right hand melody. Measure 19 is marked with a '19' above the staff. The bass line features a series of chords and a melodic line in the right hand. The piece ends with a double bar line in measure 24.

Melody (BB)

Guess Who (Chad Allan And The Expressions) - Happy



Bass (BB)

Guess Who (Chad Allan And The Expressions) - Happy

♩ = 120,000000

2



7



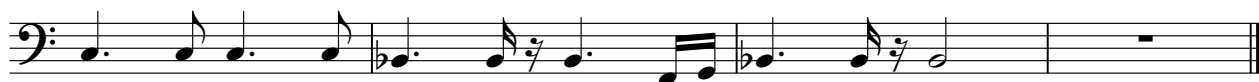
12



17



21





Strings (BB)

Guess Who (Chad Allan And The Expressions) - Happy

♩ = 120,000000

**7**

**5**

**16**

**5**