

Luxembourg - Luxembourg

♩ = 83,350006 ♯ = 83,500020 ♭ = 83,650040 ♮ = 83,950020

fr. horn(s)
trumpet(s)
trombone(s)
tuba(s)
timpani
cymbals
strings (hi)
strings (bass)
strings (mid)

6

♩ = 83,350006 ♯ = 83,500020 ♭ = 83,650040 ♮ = 83,950020

3

Detailed description: This block contains the first system of a musical score for measures 1 through 6. It features eight staves: French horn, trumpet, trombone, tuba, timpani, cymbals, high strings, bass strings, and mid strings. The music is in 4/4 time with a key signature of two flats. The first four measures are marked with a tempo of 83,350006. The fifth and sixth measures are marked with a tempo of 83,950020. There are dynamic markings of *ff* and *mf*. A '3' indicates a triplet in the high strings staff, and a '6' indicates a sixteenth-note pattern in the timpani staff.



7

♩ = 84,250023 ♯ = 84,540024 ♮ = 84,250023

fr. horn(s)
trumpet(s)
trombone(s)
tuba(s)
timpani
cymbals
strings (hi)
strings (bass)
strings (mid)

♩ = 84,250023 ♯ = 84,540024 ♮ = 84,250023

Detailed description: This block contains the second system of a musical score for measures 7 through 10. It features the same eight staves as the first system. The music continues in 4/4 time with a key signature of two flats. The first two measures are marked with a tempo of 84,250023. The third and fourth measures are marked with a tempo of 84,540024. The fifth and sixth measures are marked with a tempo of 84,250023. There are dynamic markings of *ff* and *mf*. The timpani staff shows a complex rhythmic pattern in the third measure.

12 $\text{♩} = 84,2506239575$ $\text{♩} = 81,870018$ $\text{♩} = 82,170070$ $\text{♩} = 82,170839160060$

fr. horn(s)

trumpet(s)

trombone(s)

tuba(s)

timpani

cymbals

strings (hi)

strings (bass)

strings (mid)

$\text{♩} = 84,2506239575$ $\text{♩} = 81,870018$ $\text{♩} = 82,170070$ $\text{♩} = 82,170839160060$



16 $\text{♩} = 82,760101$ $\text{♩} = 83,060043$ $\text{♩} = 83,350006$ $\text{♩} = 83,650040$ $\text{♩} = 83,950020$ $\text{♩} = 83,060043$ $\text{♩} = 82,760101$

fr. horn(s)

trumpet(s)

trombone(s)

tuba(s)

strings (hi)

strings (bass)

strings (mid)

$\text{♩} = 82,760101$ $\text{♩} = 83,060043$ $\text{♩} = 83,350006$ $\text{♩} = 83,650040$ $\text{♩} = 83,950020$ $\text{♩} = 83,060043$ $\text{♩} = 82,760101$

19 ♩ = 81,470088,17825603,8108730,5700681,280106

fr. horn(s)

trumpet(s)

trombone(s)

tuba(s)

timpani

cymbals

strings (hi)

strings (bass)

strings (mid)

♩ = 81,470088,17825603,8108730,5700681,280106

Luxembourg - Luxembourg

fr. horn(s)

♪ = 83,350006 ♪ = 83,590005 ♪ = 83,650040 ♪ = 83,950020

7 ♪ = 84,250023 ♪ = 84,540024 ♪ = 84,250025

12 ♪ = 84,250025 ♪ = 83,740050 ♪ = 82,460050 ♪ = 83,050001

17 ♪ = 83,650040 ♪ = 83,850006 ♪ = 82,450009 ♪ = 82,450009 ♪ = 82,450009 ♪ = 82,450009

Luxembourg - Luxembourg

trumpet(s)

♪ = 83,350006 ♯ = 83,59000540 ♯ = 83,650040 ♯ = 83,950020

7 ♯ = 84,250023 ♯ = 84,540024 ♯ = 84,250023 ♯ = 84,250024

13 ♯ = 83,950020 ♯ = 83,950020 ♯ = 82,700070 ♯ = 82,460076 ♯ = 83,080050 ♯ = 83,000040

18 ♯ = 83,950020 ♯ = 83,950020 ♯ = 83,950020 ♯ = 80,650020

Detailed description: This image shows a musical score for a trumpet part in G major, 4/4 time. The score is divided into four systems of five measures each. The first system (measures 1-6) starts with a treble clef and a key signature of one sharp (F#). Above the staff, four tempo markings are provided: ♯ = 83,350006, ♯ = 83,59000540, ♯ = 83,650040, and ♯ = 83,950020. The second system (measures 7-12) has tempo markings: ♯ = 84,250023, ♯ = 84,540024, ♯ = 84,250023, and ♯ = 84,250024. The third system (measures 13-17) has tempo markings: ♯ = 83,950020, ♯ = 83,950020, ♯ = 82,700070, ♯ = 82,460076, ♯ = 83,080050, and ♯ = 83,000040. The fourth system (measures 18-22) has tempo markings: ♯ = 83,950020, ♯ = 83,950020, ♯ = 83,950020, and ♯ = 80,650020. The score includes various musical notations such as quarter notes, eighth notes, and rests. A triplet of eighth notes is marked with a '3' below it in measure 20. The piece concludes with a double bar line in measure 22.

tuba(s)

Luxembourg - Luxembourg

♩ = 83,350006 ♪ = 83,580005 ♫ = 83,950020



7

♩ = 84,250023 ♪ = 84,540024 ♫ = 84,250023 ♫ = 84,250023



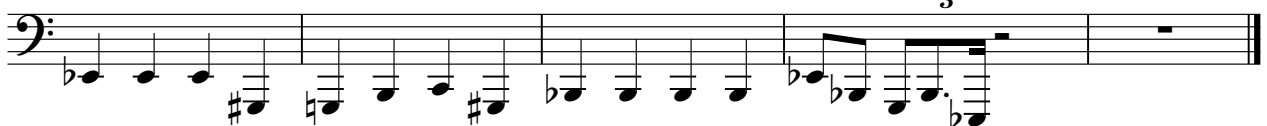
13

~~♩ = 83,350006 ♪ = 83,580005 ♫ = 83,950020~~ ♩ = 83,350006 ♪ = 83,580005 ♫ = 83,950020



18

~~♩ = 83,350006 ♪ = 83,580005 ♫ = 83,950020~~ ♩ = 83,350006 ♪ = 83,580005 ♫ = 83,950020



timpani

Luxembourg - Luxembourg

♩ = 83,350006 ♩ = 83,950006 ♩ = 83,950020

2

6

8

♩ = 84,250023 ♩ = 84,540024 ♩ = 84,250023

14

♩ = 83,650040 ♩ = 83,950006 ♩ = 83,950006 ♩ = 83,950006 ♩ = 83,950006

19


♩ = 82,300006 ♩ = 83,950006 ♩ = 83,950006 ♩ = 83,950006 ♩ = 83,950006

3

Luxembourg - Luxembourg


strings (mid)

♪ = 83,350006 ♭ = 83,560005 0 0 5 1 0 2 83,650040 ♭ = 83,950020




Musical staff with notes and accidentals.

7 ♯ = 84,250023 ♭ = 84,540024 ♭ = 84,250023 ♭ = 84,250023



Musical staff with notes and accidentals.

13 ~~83,350006 ♭ = 83,560005 0 0 5 1 0 2 83,650040 ♭ = 83,950020~~ ♯ = 84,250023 ♭ = 84,540024 ♭ = 84,250023 ♭ = 84,250023



Musical staff with notes and accidentals.

18 ♭ = 83,950020 0 0 6 4 3 82,840004 83,350006 0 0 5 1 0 2 83,650040 ♭ = 83,950020



Musical staff with notes and accidentals.