

Guilherme e Santiago - Coracao

♩ = 89,000038
Gil Pereira

Musical score for the first system of 'Coracao'. The score is in 4/4 time and features five staves: Percussion, three Jazz Guitar parts, and a 5-string Electric Bass. The Percussion part has a drum set icon and shows a pattern of eighth notes. The first Jazz Guitar part has a treble clef and shows a series of chords and eighth notes. The second Jazz Guitar part has a treble clef and shows a series of chords and eighth notes. The third Jazz Guitar part has a treble clef and shows a series of chords and eighth notes. The 5-string Electric Bass part has a bass clef and shows a series of eighth notes. Above the Percussion staff, there are three 'x' marks with a bracket above them, indicating a specific rhythmic pattern.



Musical score for the second system of 'Coracao'. The score is in 4/4 time and features five staves: Perc. (Percussion), three J. Gtr. (Jazz Guitar) parts, and E. Bass (Electric Bass). The Perc. part has a drum set icon and shows a pattern of eighth notes. The first J. Gtr. part has a treble clef and shows a series of chords and eighth notes. The second J. Gtr. part has a treble clef and shows a series of chords and eighth notes. The third J. Gtr. part has a treble clef and shows a series of chords and eighth notes. The E. Bass part has a bass clef and shows a series of eighth notes. Above the Perc. staff, there are three 'x' marks with a bracket above them, indicating a specific rhythmic pattern.

6

Perc.

J. Gtr.

J. Gtr.

J. Gtr.

J. Gtr.

E. Gtr.

E. Bass



8

Perc.

J. Gtr.

J. Gtr.

E. Gtr.

E. Bass

10

Perc.

J. Gtr.

J. Gtr.

E. Gtr.

E. Bass



12

Perc.

J. Gtr.

J. Gtr.

E. Gtr.

E. Bass

14

Perc. J. Gtr. J. Gtr. E. Gtr. E. Bass

This system contains measures 14 and 15. The Percussion part features a complex rhythmic pattern with eighth and sixteenth notes and rests. The first J. Gtr. part has a melodic line with some accidentals. The second J. Gtr. part plays a steady eighth-note chordal accompaniment. The E. Gtr. part also plays a steady eighth-note chordal accompaniment. The E. Bass part has a melodic line with eighth notes and rests.



16

Perc. J. Gtr. E. Bass

This system contains measures 16 and 17. The Percussion part continues with a rhythmic pattern of eighth notes and rests. The J. Gtr. part features a melodic line with various chords and accidentals. The E. Bass part has a melodic line with eighth notes and rests.



18

Perc. J. Gtr. E. Bass

This system contains measures 18 and 19. The Percussion part has a rhythmic pattern with eighth notes and rests. The J. Gtr. part has a melodic line with chords and accidentals. The E. Bass part has a melodic line with eighth notes and rests.

Perc. Organ

This system contains a single staff for Perc. Organ, which is mostly silent with some chordal accompaniment at the end of the system.

20

Perc.

J. Gtr.

E. Bass

Perc. Organ

Measures 20-21. Percussion features a complex rhythmic pattern with accents. J. Gtr. has a complex chordal pattern with many accidentals. E. Bass has a simple melodic line. Perc. Organ has block chords.

22

Perc.

J. Gtr.

E. Bass

Perc. Organ

Measures 22-23. Percussion features a complex rhythmic pattern with accents. J. Gtr. has a complex chordal pattern with many accidentals. E. Bass has a simple melodic line. Perc. Organ has block chords.

24

Perc.

J. Gtr.

E. Bass

Perc. Organ

Measures 24-25. Percussion features a complex rhythmic pattern with accents. J. Gtr. has a complex chordal pattern with many accidentals. E. Bass has a simple melodic line. Perc. Organ has block chords.

26

Perc.

J. Gtr.

E. Bass

Perc. Organ

This system contains measures 26 and 27. The Percussion part features a complex rhythmic pattern with 'x' marks above the staff. The J. Gtr. part consists of a series of chords with slash marks indicating strumming. The E. Bass part has a simple melodic line. The Perc. Organ part provides harmonic support with block chords.



28

Perc.

J. Gtr.

E. Bass

This system contains measures 28 and 29. The Percussion part continues with a similar rhythmic pattern. The J. Gtr. part maintains the chordal structure. The E. Bass part continues its melodic line. There is no Perc. Organ part in this system.



30

Perc.

J. Gtr.

E. Bass

This system contains measures 30 and 31. The Percussion part continues with a similar rhythmic pattern. The J. Gtr. part maintains the chordal structure. The E. Bass part continues its melodic line. There is no Perc. Organ part in this system.

32

Perc. J. Gtr. E. Bass

This system contains measures 32 and 33. The Percussion part features a consistent rhythmic pattern of eighth notes with 'x' marks above them. The J. Gtr. part consists of a series of chords, some with 'z' marks above them. The E. Bass part has a simple melodic line with some rests.



34

Perc. J. Gtr. E. Bass

This system contains measures 34 and 35. The Percussion part continues with eighth notes, including some with asterisks above them. The J. Gtr. part shows a change in chord voicings. The E. Bass part continues its melodic line.



36

Perc. J. Gtr. E. Bass

This system contains measures 36 and 37. The Percussion part has a more complex rhythmic pattern with eighth notes and some with asterisks. The J. Gtr. part continues with various chords. The E. Bass part has a steady melodic progression.



38

Perc. J. Gtr. E. Bass

This system contains measures 38 and 39. The Percussion part features eighth notes with asterisks. The J. Gtr. part continues with chords, some with 'z' marks. The E. Bass part concludes with a final melodic phrase.

40

Perc. J. Gtr. E. Bass

This system contains measures 40 and 41. The Percussion part features a consistent rhythmic pattern of eighth notes with 'x' marks above them. The J. Gtr. part consists of a series of chords, some with 'x' marks above them. The E. Bass part has a simple melodic line with some rests.



42

Perc. J. Gtr. E. Bass

This system contains measures 42 and 43. The Percussion part continues with eighth notes, but with some variations in the pattern. The J. Gtr. part has chords, with some marked with 'x' and others with a '*' above them. The E. Bass part continues its melodic line.



44

Perc. J. Gtr. J. Gtr. E. Gtr. E. Bass

This system contains measures 44, 45, and 46. The Percussion part has eighth notes with 'x' marks, some marked with a '*' above them. The J. Gtr. part has chords, some with 'x' marks. The E. Gtr. part has a melodic line. The E. Bass part continues its melodic line.

47

Perc. J. Gtr. E. Bass

This system contains measures 47 and 48. The Percussion part features a consistent rhythmic pattern of eighth notes with 'x' marks above them. The J. Gtr. part consists of a series of chords, many with 'x' marks above them, and some chords with a slash through them. The E. Bass part has a simple melodic line with eighth notes and rests.



49

Perc. J. Gtr. E. Bass

This system contains measures 49 and 50. The Percussion part continues with the same eighth-note pattern. The J. Gtr. part continues with chords and slash-through chords. The E. Bass part continues with its melodic line.



51

Perc. J. Gtr. E. Bass

This system contains measures 51 and 52. The Percussion part has a variation in measure 52 with a 'z' mark above a note. The J. Gtr. part has a variation in measure 52 with a 'z' mark above a chord. The E. Bass part continues with its melodic line.



53

Perc. J. Gtr. E. Bass

This system contains measures 53 and 54. The Percussion part continues with the eighth-note pattern. The J. Gtr. part continues with chords and slash-through chords. The E. Bass part continues with its melodic line.

55

Perc.

J. Gtr.

E. Bass

Detailed description: This system covers measures 55 and 56. The Percussion part features a complex, syncopated rhythm with 'x' marks above the staff indicating specific hits. The J. Gtr. part consists of a series of chords, many with slash marks indicating muted notes. The E. Bass part has a steady, simple bass line.



57

Perc.

J. Gtr.

E. Bass

Detailed description: This system covers measures 57 and 58. The Percussion part continues with a complex, syncopated rhythm. The J. Gtr. part maintains its chordal accompaniment. The E. Bass part continues with its simple bass line.



59

Perc.

J. Gtr.

E. Bass

Detailed description: This system covers measures 59 and 60. The Percussion part continues with its complex rhythm. The J. Gtr. part continues with its chordal accompaniment. The E. Bass part continues with its simple bass line.



61

Perc.

J. Gtr.

E. Bass

Detailed description: This system covers measures 61 and 62. The Percussion part continues with its complex rhythm. The J. Gtr. part continues with its chordal accompaniment. The E. Bass part continues with its simple bass line.

63

Perc. J. Gtr. E. Bass

This system contains measures 63 and 64. The Percussion part features a complex rhythmic pattern with eighth and sixteenth notes and rests. The J. Gtr. part consists of a series of chords, some with a slash indicating a strum. The E. Bass part has a simple melodic line with quarter and eighth notes.



65

Perc. J. Gtr. E. Bass

This system contains measures 65 and 66. The Percussion part continues with a similar rhythmic pattern. The J. Gtr. part has a consistent chordal accompaniment. The E. Bass part maintains its melodic line.



67

Perc. J. Gtr. J. Gtr. J. Gtr. E. Bass

This system contains measures 67, 68, 69, and 70. The Percussion part has a rhythmic pattern with some rests. The first J. Gtr. part has a chordal accompaniment. The second and third J. Gtr. parts are mostly silent, with some notes in measure 70. The E. Bass part continues with its melodic line.

69

Perc.

J. Gtr.

J. Gtr.

J. Gtr.

E. Bass



71

Perc.

J. Gtr.

J. Gtr.

J. Gtr.

E. Bass

Guilherme e Santiago - Coracao

Percussion

♩ = 89,000038

Gil Pereira

2

The score is written on ten staves, each representing a measure of music. The notation includes various rhythmic symbols such as eighth notes, quarter notes, and rests, along with specific percussion markings like 'x' and '*' above the notes. The piece is in 4/4 time, as indicated by the '4' over the first staff. The tempo is marked as 89,000038. The score is attributed to Gil Pereira and is numbered '2'. The notation is dense and complex, typical of a percussion score for a specific instrument.

V.S.

Percussion

35

Musical notation for measure 35, featuring a treble clef, a single eighth note on the first line, and a series of eighth notes on the second line with upward-pointing stems. Above the staff, there are four groups of eighth notes, each with an 'x' above it, indicating a specific percussive sound.

37

Musical notation for measure 37, featuring a treble clef and a series of eighth notes on the second line with upward-pointing stems. Above the staff, there are four groups of eighth notes, each with an 'x' above it.

39

Musical notation for measure 39, featuring a treble clef and a series of eighth notes on the second line with upward-pointing stems. Above the staff, there are three groups of eighth notes, each with an 'x' above it.

41

Musical notation for measure 41, featuring a treble clef and a series of eighth notes on the second line with upward-pointing stems. Above the staff, there are four groups of eighth notes, each with an 'x' above it.

43

Musical notation for measure 43, featuring a treble clef and a series of eighth notes on the second line with upward-pointing stems. Above the staff, there are four groups of eighth notes, each with an 'x' above it. A slur is present over the first two groups.

46

Musical notation for measure 46, featuring a treble clef and a series of eighth notes on the second line with upward-pointing stems. Above the staff, there are four groups of eighth notes, each with an 'x' above it.

50

Musical notation for measure 50, featuring a treble clef and a series of eighth notes on the second line with upward-pointing stems. Above the staff, there are four groups of eighth notes, each with an 'x' above it. A slur is present over the first two groups.

54

Musical notation for measure 54, featuring a treble clef and a series of eighth notes on the second line with upward-pointing stems. Above the staff, there are four groups of eighth notes, each with an 'x' above it. A slur is present over the first two groups.

57

Musical notation for measure 57, featuring a treble clef and a series of eighth notes on the second line with upward-pointing stems. Above the staff, there are four groups of eighth notes, each with an 'x' above it.

59

Musical notation for measure 59, featuring a treble clef and a series of eighth notes on the second line with upward-pointing stems. Above the staff, there are four groups of eighth notes, each with an 'x' above it.

Percussion

61

63

65

67

70

♩ = 89,000038

2

6

15

18

21

24

27

30

33

36

V.S.

39



42



46



49



52



55



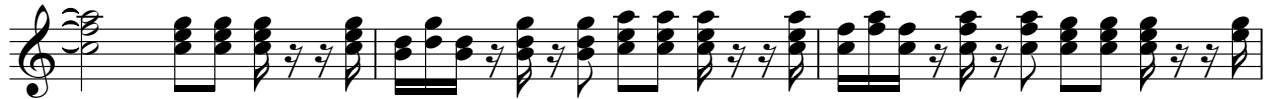
58



61



64



67



70



♩ = 89,000038

2

6

2

12

54

69

3

♩ = 89,000038

2

8

36

23

69

2

♩ = 89,000038

6

9

11

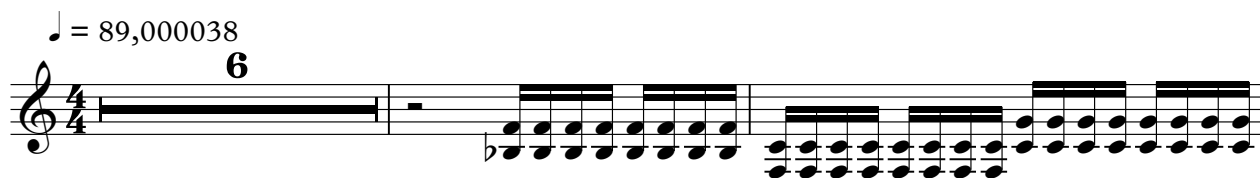
13

14

60

♩ = 89,000038

6



9



11



13



15

29

30



Guilherme e Santiago - Coracao

5-string Electric Bass

♩ = 89,000038

2



6



9



12



15



20



24



28



32



36



V.S.

40



44



48



52



57



61



65



69



71



Percussive Organ

Guilherme e Santiago - Coracao

♩ = 89,000038

18



23



27

47

