

Guy Mitchell - Singing The Blues

♩ = 135,000137

Sax

Trombone

Drums

Bass

♩ = 135,000137

3

Strings

Piano

This system of the musical score includes staves for Saxophone, Trombone, Drums, Bass, Strings, and Piano. The key signature is one flat (B-flat) and the time signature is 4/4. The tempo is marked as ♩ = 135,000137. The Saxophone and Trombone parts feature complex rhythmic patterns with many beamed notes. The Drums part shows a steady groove with eighth notes. The Bass part has a walking bass line with eighth notes and rests. The Piano part consists of chords and single notes. A triplet of eighth notes is marked with a '3' in the Bass staff.

4

Sax

Trombone

Drums

Bass

Piano

This system continues the musical score. It includes staves for Saxophone, Trombone, Drums, Bass, and Piano. The key signature remains one flat and the time signature is 4/4. The Saxophone and Trombone parts continue with their complex rhythmic patterns. The Drums part maintains the groove with eighth notes and rests. The Bass part continues with its walking bass line, featuring a triplet of eighth notes marked with a '3'. The Piano part continues with chords and single notes.

6

Sax

Trombone

Drums

Bass

Piano

8

Sax

Trombone

Drums

Bass

Piano

10

Sax

Trombone

Drums

Bass

Piano

12

Sax

Trombone

Drums

Bass

Piano

14

Sax

Trombone

Drums

Bass

Piano

16

Sax

Trombone

Drums

Bass

Piano

18

Sax

Trombone

Drums

Bass

Piano

20

Sax

Trombone

Drums

Bass

Piano

22

Sax

Trombone

Drums

Bass

Strings

Piano

24

Sax

Trombone

Drums

Bass

Strings

Piano

26

Sax

Trombone

Drums

Bass

Strings

Piano

28

Sax

Trombone

Drums

Bass

Piano

31

Sax

Trombone

Drums

Bass

Piano

33

Sax

Trombone

Drums

Bass

Piano

35

Sax

Trombone

Drums

Bass

Piano

37

Sax

Trombone

Drums

Bass

Piano

39

Sax

Trombone

Drums

Bass

Piano

41

Sax

Trombone

Drums

Bass

Piano

43

Sax

Trombone

Drums

Bass

Piano

45

Sax

Trombone

Drums

Bass

Piano

47

Sax

Trombone

Drums

Bass

Piano

49

Sax

Trombone

Drums

Bass

Piano

51

Sax

Trombone

Drums

Bass

Piano

53

Sax

Trombone

Drums

Bass

Strings

Piano

55

Sax

Trombone

Drums

Bass

Strings

Piano

57

Sax

Trombone

Drums

Bass

Strings

Piano

59

Sax

Trombone

Drums

Bass

Strings

Piano

61

Sax

Trombone

Drums

Bass

Piano

63

Sax

Trombone

Drums

Bass

Piano

65

Sax

Trombone

Drums

Bass

Piano

67

Sax

Trombone

Drums

Bass

Strings

Piano

69

Sax

Trombone

Drums

Bass

Piano

Guy Mitchell - Singing The Blues

Sax

♩ = 135,000137

6

11

16

21

27

32

37

42

48

V.S.

53



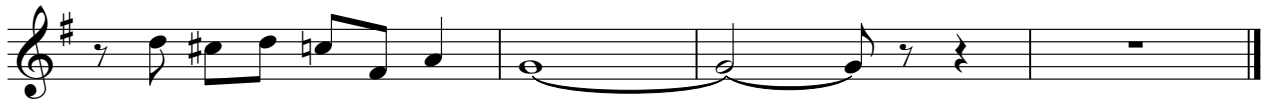
59



64



67



Trombone

Guy Mitchell - Singing The Blues

♩ = 135,000137

6

11

16

21

27

32

37

42

48

V.S.

2

Trombone

53

59

64

67

Guy Mitchell - Singing The Blues

Drums

♩ = 135,000137

5

9

13

16

20

24

28

32

36

V.S.

Drums

39

3 3 3

42

3 3 3 3

46

6 6 6 6

50

3 3 3

53

6 3 3 3

57

3 3 3 3 3

62

3 3 3 3

66

6 6

68

3 3 3

Guy Mitchell - Singing The Blues

Bass

♩ = 135,000137

First staff of music, measures 1-3. It begins with a whole rest in the first measure, followed by eighth-note patterns in the second and third measures. A triplet of eighth notes is indicated above the final measure.

Second staff of music, measures 4-6. Measure 4 starts with a '4' above the staff. The staff contains eighth-note patterns throughout.

Third staff of music, measures 7-9. Measure 7 starts with a '7' above the staff. The staff contains eighth-note patterns throughout.

Fourth staff of music, measures 10-12. Measure 10 starts with a '9' above the staff. The staff contains eighth-note patterns throughout.

Fifth staff of music, measures 13-15. Measure 13 starts with an '11' above the staff. The staff contains eighth-note patterns throughout.

Sixth staff of music, measures 16-18. Measure 16 starts with a '14' above the staff. The staff contains eighth-note patterns throughout.

Seventh staff of music, measures 19-21. Measure 19 starts with a '16' above the staff. The staff contains eighth-note patterns throughout.

Eighth staff of music, measures 22-24. Measure 22 starts with an '18' above the staff. The staff contains eighth-note patterns throughout.

Ninth staff of music, measures 25-27. Measure 25 starts with a '20' above the staff. The staff contains eighth-note patterns throughout.

Tenth staff of music, measures 28-30. Measure 28 starts with a '22' above the staff. The staff contains eighth-note patterns throughout.

V.S.

24



26



29



32



34



37



40



43



46



48



50



52



54



56



58



61



64



67



69



Strings

Guy Mitchell - Singing The Blues

♩ = 135,000137

21

Chord diagrams for measures 22-26:
Measure 22: G major (x02320) and D major (xx0232)
Measure 23: G major (x02320) and D major (xx0232)
Measure 24: G major (x02320) and D major (xx0232)
Measure 25: G major (x02320) and D major (xx0232)
Measure 26: G major (x02320) and D major (xx0232)

27

26

Chord diagrams for measures 28-32:
Measure 28: G major (x02320) and D major (xx0232)
Measure 29: G major (x02320) and D major (xx0232)
Measure 30: G major (x02320) and D major (xx0232)
Measure 31: G major (x02320) and D major (xx0232)
Measure 32: G major (x02320) and D major (xx0232)

58

8

2

Chord diagrams for measures 58-62:
Measure 58: G major (x02320) and D major (xx0232)
Measure 59: G major (x02320) and D major (xx0232)
Measure 60: G major (x02320) and D major (xx0232)
Measure 61: G major (x02320) and D major (xx0232)
Measure 62: G major (x02320) and D major (xx0232)

Guy Mitchell - Singing The Blues

Piano

♩ = 135,000137

6

10

15

19

23

27

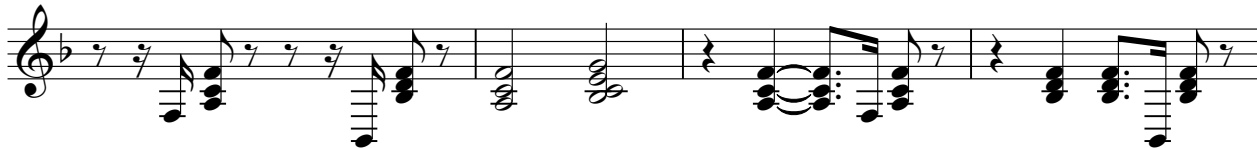
31

35

40

V.S.

44



48



52



56



60



65



68

