

Henry Purcell - RONDEAU

$\text{♩} = 140,000137$

Oboe
Cor Anglais
Clarinet in B \flat
Clarinet in B \flat
Bassoon

This system of the musical score is for the first five measures of the piece. It features five staves: Oboe, Cor Anglais, two Clarinets in B \flat , and Bassoon. The time signature is 4/4. The Oboe part begins with a whole rest in the first measure, followed by a half note G \flat in the second measure, and then a quarter note G \flat in the third measure. The Cor Anglais part has a whole rest in the first measure, followed by a half note G \flat in the second measure, and then a quarter note G \flat in the third measure. The Clarinet in B \flat parts have whole rests in the first two measures, followed by a quarter note G \flat in the third measure. The Bassoon part has whole rests in the first two measures, followed by a quarter note G \flat in the third measure.

6

Ob.
C. A.
Cl.
Cl.
Bsn.

This system of the musical score is for measures 6 through 9. It features five staves: Oboe, Cor Anglais, two Clarinets, and Bassoon. The Oboe part begins with a half note G \flat in the first measure, followed by a whole note G \flat in the second measure, and then a half note G \flat in the third measure. The Cor Anglais part has a quarter note G \flat in the first measure, followed by a quarter note G \flat in the second measure, and then a quarter note G \flat in the third measure. The Clarinet parts have whole notes in the first measure, followed by half notes in the second measure, and then quarter notes in the third measure. The Bassoon part has whole notes in the first measure, followed by half notes in the second measure, and then quarter notes in the third measure.

(C)1994 DMS/BCK Products
(C)1994 DMS/BCK Products

11

Ob.
C. A.
Cl.
Cl.
Bsn.

This system contains measures 11 through 14. The Oboe (Ob.) part has rests in measures 11 and 12, followed by a half note in measure 13 and a quarter note in measure 14. The Clarinet in A (C. A.) part plays a continuous eighth-note pattern. The Clarinet (Cl.) part has rests in measures 11 and 12, then enters in measure 13 with a melodic line. The second Clarinet (Cl.) part plays a rhythmic eighth-note pattern. The Bassoon (Bsn.) part plays a simple bass line.

15

Ob.
C. A.
Cl.
Cl.
Bsn.

This system contains measures 15 through 19. The Oboe (Ob.) part has rests in measures 15, 16, and 17, then plays a half note in measure 18 and a quarter note in measure 19. The Clarinet in A (C. A.) part continues its eighth-note pattern. The Clarinet (Cl.) part has a half note in measure 15, rests in 16 and 17, and a quarter note in measure 18. The second Clarinet (Cl.) part plays a rhythmic eighth-note pattern. The Bassoon (Bsn.) part plays a simple bass line.

20

Ob.
C. A.
Cl.
Bsn.

This system contains measures 20 through 23. The Oboe (Ob.) part has rests in measures 20, 21, and 22, then plays a quarter note in measure 23. The Clarinet in A (C. A.) part continues its eighth-note pattern. The Clarinet (Cl.) part plays a melodic line with a long slur. The Bassoon (Bsn.) part plays a simple bass line.

24

Ob.
C. A.
Cl.
Cl.
Bsn.

Detailed description: This musical score covers measures 24 through 28. The Oboe (Ob.) part is mostly silent, with a few notes in measure 28. The Clarinet in A (C. A.) plays a melodic line with eighth and sixteenth notes. The Clarinet in C (Cl.) has rests until measure 28, then plays a single note. The second Clarinet in C (Cl.) plays a melodic line with eighth and sixteenth notes. The Bassoon (Bsn.) plays a bass line with eighth and sixteenth notes.

29

Ob.
C. A.
Cl.
Cl.
Bsn.

Detailed description: This musical score covers measures 29 through 33. The Oboe (Ob.) plays a melodic line with eighth and sixteenth notes. The Clarinet in A (C. A.) plays a melodic line with eighth and sixteenth notes. The Clarinet in C (Cl.) plays a melodic line with eighth and sixteenth notes. The second Clarinet in C (Cl.) plays a melodic line with eighth and sixteenth notes. The Bassoon (Bsn.) plays a bass line with eighth and sixteenth notes.

34

Ob.

C. A.

Cl.

Cl.

Bsn.

Detailed description: This system contains measures 34 through 37. The Oboe part starts with a whole note G4 in measure 34, followed by a half note G4 in measure 35, and rests in measures 36 and 37. The Cor Anglais part has a rhythmic pattern of eighth and sixteenth notes. The first Clarinet part has whole notes G4 and A4 in measures 34-35, and a half note G4 in measure 36, with a slur over the final two notes in measure 37. The second Clarinet part has a melodic line with eighth and sixteenth notes. The Bassoon part has a simple melodic line with whole notes G4 and A4 in measures 34-35, and a whole note G4 in measure 36, with a slur over the final two notes in measure 37.

38

C. A.

Cl.

Cl.

Bsn.

Detailed description: This system contains measures 38 through 41. The Cor Anglais part has a rhythmic pattern of eighth and sixteenth notes. The first Clarinet part has a melodic line with eighth and sixteenth notes. The second Clarinet part has a melodic line with eighth and sixteenth notes. The Bassoon part has a melodic line with eighth and sixteenth notes.

42

C. A.

Cl.

Cl.

Bsn.

Detailed description: This system contains measures 42 through 45. The Cor Anglais part has a rhythmic pattern of eighth and sixteenth notes. The first Clarinet part has a melodic line with eighth and sixteenth notes. The second Clarinet part has a melodic line with eighth and sixteenth notes. The Bassoon part has a melodic line with eighth and sixteenth notes.

46

C. A.
Cl.
Cl.
Bsn.

This system contains measures 46 through 49. The C. A. part features a melodic line with eighth and sixteenth notes, including a trill in measure 47. The Cl. parts provide harmonic support with sustained notes and some movement. The Bsn. part has a lower melodic line with sustained notes and some chromaticism.

50

Ob.
C. A.
Cl.
Cl.
Bsn.

This system contains measures 50 through 54. The Ob. part has a melodic line with some rests. The C. A. part continues with a melodic line, including a trill in measure 52. The Cl. parts have sustained notes and some movement. The Bsn. part has a lower melodic line with sustained notes and some chromaticism.

55

Ob.
C. A.
Cl.
Cl.
Bsn.

This system contains measures 55 through 58. The Ob. part has a melodic line with some rests. The C. A. part continues with a melodic line, including a trill in measure 56. The Cl. parts have sustained notes and some movement. The Bsn. part has a lower melodic line with sustained notes and some chromaticism.

60

Ob.

C. A.

Cl.

Cl.

Bsn.

Oboe

Henry Purcell - RONDEAU

♩ = 140,000137

8

15

27

35

53

59

(C)1994 DMS/BCK Products
(C)1994 DMS/BCK Products

Cor Anglais

Henry Purcell - RONDEAU

♩ = 140,000137

7

12

17

22

27

32

37

42

46

(C)1994 DMS/BCK Products
(C)1994 DMS/BCK Products

V.S.

Henry Purcell - RONDEAU

Clarinet in B \flat

$\text{♩} = 140,000137$

3

10

18

9

32

39

46

53

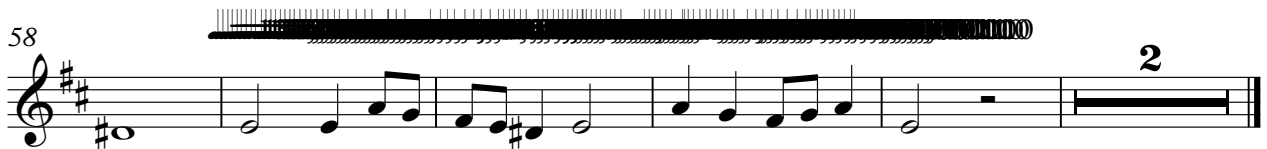
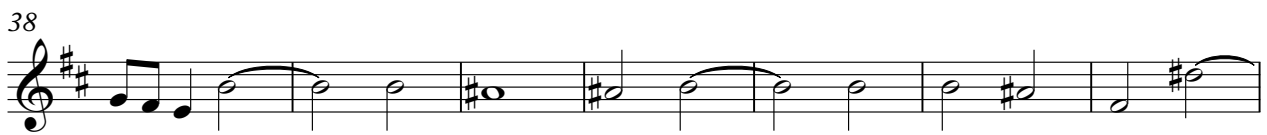
59

(C)1994 DMS/BCK Products
(C)1994 DMS/BCK Products

Henry Purcell - RONDEAU

Clarinet in B \flat

$\text{♩} = 140,000137$



(C)1994 DMS/BCK Products
(C)1994 DMS/BCK Products

Bassoon

Henry Purcell - RONDEAU

♩ = 140,000137



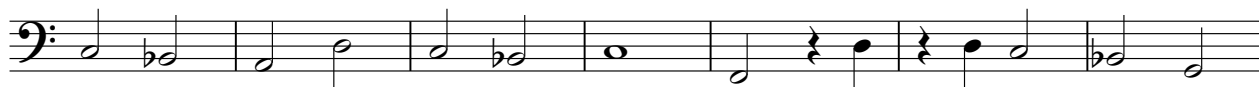
8



15



22



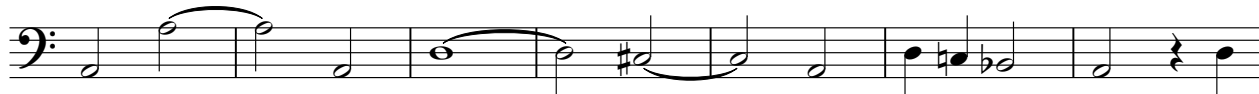
29



36



44



51



57



(C)1994 DMS/BCK Products
(C)1994 DMS/BCK Products