

Henry Salvador - Le Loup La Biche Et Le Chevalier

Staff-1

Right Hand

Left Hand

Staff-2

This system contains four staves. Staff-1 and Staff-2 are empty. The Right Hand staff (treble clef) and Left Hand staff (treble clef) both have a key signature of one sharp (F#) and a 4/4 time signature. The Right Hand part consists of three measures of eighth-note patterns: $\text{G4} \text{A4} \text{B4} \text{C5}$, $\text{B4} \text{A4} \text{G4} \text{F\#4}$, and $\text{E4} \text{D4} \text{C4} \text{B3}$. The Left Hand part consists of three measures of quarter notes: G3 , A3 , B3 , C4 , D4 , E4 , F\#4 , and G4 .

4

Staff-1

Right Hand

Left Hand

Staff-2

This system contains four staves. Staff-1 and Staff-2 have a key signature of one sharp (F#) and a 4/4 time signature. The Right Hand staff (treble clef) has a measure rest in the first measure, followed by two measures of eighth-note patterns: $\text{G4} \text{A4} \text{B4} \text{C5}$ and $\text{B4} \text{A4} \text{G4} \text{F\#4}$. The Left Hand staff (treble clef) has a measure rest in the first measure, followed by two measures of quarter notes: G3 , A3 , B3 , C4 , D4 , E4 , F\#4 , and G4 . The second system ends with a measure rest in the Right Hand staff.

7

Staff-1

Right Hand

Left Hand

Staff-2

Detailed description: This system covers measures 7, 8, and 9. Staff 1 and Staff 2 both play a whole note chord consisting of G4, A4, B4, and C5, with a slur over the notes. The Right Hand part plays eighth notes: G4 (quarter rest), A4, B4, C5, G4, A4, B4, C5. The Left Hand part plays eighth notes: G3 (quarter rest), A3, B3, C4, G3, A3, B3, C4.

10

Staff-1

Right Hand

Left Hand

Staff-2

Detailed description: This system covers measures 10, 11, and 12. Staff 1 and Staff 2 play eighth notes: G4, A4, B4, C5, G4, A4, B4, C5. The Right Hand part plays eighth notes: G4 (quarter rest), A4, B4, C5, G4, A4, B4, C5. The Left Hand part plays eighth notes: G3 (quarter rest), A3, B3, C4, G3, A3, B3, C4.

13

Staff-1

Right Hand

Left Hand

Staff-2

Detailed description: This system covers measures 13, 14, and 15. Staff 1 and Staff 2 play eighth notes: G4, A4, B4, C5, G4, A4, B4, C5. The Right Hand part plays eighth notes: G4 (quarter rest), A4, B4, C5, G4, A4, B4, C5. The Left Hand part plays eighth notes: G3 (quarter rest), A3, B3, C4, G3, A3, B3, C4.

16

Staff-1

Right Hand

Left Hand

Staff-2

19

Staff-1

Right Hand

Left Hand

Staff-2

22

Staff-1

Right Hand

Left Hand

Staff-2

25

Staff-1

Right Hand

Left Hand

Staff-2

Detailed description: This system covers measures 25 to 28. Staff 1 and Staff 2 contain a melodic line that starts with eighth notes, changes to sixteenth notes in measure 26, and features a trill in measure 27. The Right Hand part consists of chords, with a triplet of eighth notes in measure 27. The Left Hand part has a simple bass line with some rests and a triplet of eighth notes in measure 27.

29

Staff-1

Right Hand

Left Hand

Staff-2

Detailed description: This system covers measures 29 to 31. Staff 1 and Staff 2 contain a melodic line with eighth notes, ending with a long note in measure 31. The Right Hand part has eighth notes with rests, and the Left Hand part has eighth notes with rests.

32

Staff-1

Right Hand

Left Hand

Staff-2

Detailed description: This system covers measures 32 to 35. Staff 1 and Staff 2 contain a melodic line with eighth notes. The Right Hand part has eighth notes with rests, and the Left Hand part has eighth notes with rests.

35

Staff-1

Right Hand

Left Hand

Staff-2

38

Staff-1

Right Hand

Left Hand

Staff-2

41

Staff-1

Right Hand

Left Hand

Staff-2

44

Staff-1

Right Hand

Left Hand

Staff-2

47

Staff-1

Right Hand

Left Hand

Staff-2

50

Staff-1

Right Hand

Left Hand

Staff-2

54

Staff-1

Right Hand

Left Hand

Staff-2

57

Staff-1

Right Hand

Left Hand

Staff-2

60

Staff-1

Right Hand

Left Hand

Staff-2

63

Staff-1

Right Hand

Left Hand

Staff-2

Measures 63-65. Staff 1 and Staff 2 contain a whole note chord with a slur. The Right Hand and Left Hand parts feature eighth notes with slurs, indicating a rhythmic pattern.

66

Staff-1

Right Hand

Left Hand

Staff-2

Measures 66-68. Staff 1 and Staff 2 contain eighth notes with slurs. The Right Hand and Left Hand parts feature eighth notes with slurs, indicating a rhythmic pattern.

69

Staff-1

Right Hand

Left Hand

Staff-2

Measures 69-71. Staff 1 and Staff 2 contain a whole note chord. The Right Hand and Left Hand parts feature eighth notes with slurs, indicating a rhythmic pattern.

71

Staff-1

Musical staff 1 in treble clef, key signature of three flats (B-flat, E-flat, A-flat). It contains three measures: the first measure has a whole note G4; the second measure has a quarter note G4, quarter note A4, quarter note B4, quarter note C5, quarter note B4, quarter note A4, quarter note G4; the third measure has a whole note G4.

Right Hand

Musical staff for the right hand in treble clef, key signature of three flats. It contains three measures: the first measure has a quarter rest followed by quarter notes G4, A4, B4, C5, B4, A4, G4; the second measure has a quarter rest followed by quarter notes G4, A4, B4, C5, B4, A4, G4; the third measure has a whole rest.

Left Hand

Musical staff for the left hand in treble clef, key signature of three flats. It contains three measures: the first measure has a quarter note G3, quarter rest, quarter note G3, quarter rest; the second measure has a quarter note G3, quarter rest, quarter note G3, quarter rest; the third measure has a whole rest.

Staff-2

Musical staff 2 in treble clef, key signature of three flats. It contains three measures: the first measure has a whole note G4; the second measure has a quarter note G4, quarter note A4, quarter note B4, quarter note C5, quarter note B4, quarter note A4, quarter note G4; the third measure has a whole note G4.

Henry Salvador - Le Loup La Biche Et Le Chevalier

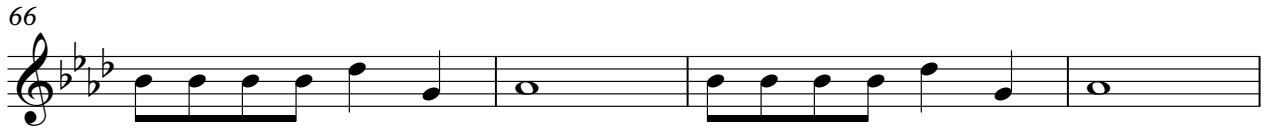
Staff-1

Musical score for Staff-1, measures 4 to 54. The score is written in treble clef with a key signature of one sharp (F#) and a time signature of 4/4. The music features various rhythmic patterns, including eighth and sixteenth notes, and rests. Measure 4 is marked with a '4' above the staff. Measures 22, 26, 44, and 49 contain triplets of eighth notes. The score concludes with a double bar line at measure 54.

V.S.

2

Staff-1



Henry Salvador - Le Loup La Biche Et Le Chevalier

Right Hand

5

9

13

17

21

27

31

35

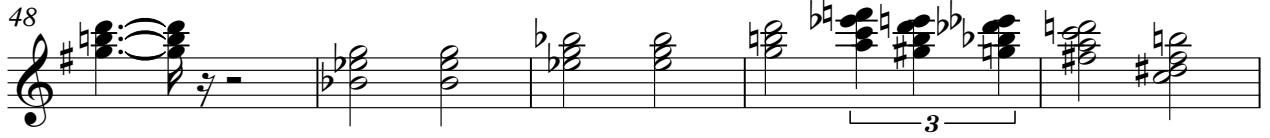
39

V.S.

43



48



53



57



61



65



69



71



Left Hand

Henry Salvador - Le Loup La Biche Et Le Chevalier

5

10

15

20

25

30

35

40

44

V.S.

Henry Salvador - Le Loup La Biche Et Le Chevalier

Staff-2

Musical score for Staff-2, measures 4 to 54. The score is written in treble clef with a key signature of one sharp (F#) and a time signature of 4/4. The music consists of ten staves of notation. Measure 4 is marked with a '4' above the staff. The score includes various rhythmic patterns, including eighth and sixteenth notes, and rests. There are several triplet markings (indicated by a '3' and a bracket) in measures 22, 26, 44, and 49. The piece concludes with a double bar line at the end of measure 54.

V.S.

2

Staff-2

