

# Ierse Folksong - Wheels Of The World

♩ = 220,000214

Guitar

Banjo

Bass

♩ = 220,000214

Accordion

Violin

5

Guitar

Banjo

Bass

Accordion

Violin

8

Guitar

Banjo

Bass

Accordian

Violin

11

Guitar

Banjo

Bass

Accordian

Violin

14

This system of music covers measures 14, 15, and 16. It features five staves: Guitar, Banjo, Bass, Accordion, and Violin. The Guitar part uses a treble clef and plays a series of chords, with a sharp sign indicating a key signature change. The Banjo part uses a treble clef and plays a rhythmic melody. The Bass part uses a bass clef and plays a simple bass line. The Accordion and Violin parts use treble clefs and play a melodic line with eighth notes.

17

This system of music covers measures 17, 18, and 19. It features five staves: Guitar, Banjo, Bass, Accordion, and Violin. The Guitar part uses a treble clef and continues with chords, including a sharp sign. The Banjo part uses a treble clef and plays a rhythmic melody. The Bass part uses a bass clef and plays a simple bass line. The Accordion and Violin parts use treble clefs and play a melodic line with eighth notes.

20

Guitar

Banjo

Bass

Accordion

Violin

Detailed description: This system of music covers measures 20, 21, and 22. The Guitar part (top staff) features a series of chords, with a sharp sign (#) above the first and third measures. The Banjo part (second staff) has a rhythmic pattern of eighth notes. The Bass part (third staff) consists of a simple eighth-note bass line. The Accordion and Violin parts (fourth and fifth staves) play a melodic line with eighth notes, including a sharp sign (#) in the first measure of each part.

23

Guitar

Banjo

Bass

Accordion

Violin

Detailed description: This system of music covers measures 23, 24, and 25. The Guitar part (top staff) continues with chords, including a sharp sign (#) above the second and fourth measures. The Banjo part (second staff) maintains its rhythmic eighth-note pattern. The Bass part (third staff) continues with its eighth-note bass line. The Accordion and Violin parts (fourth and fifth staves) play a melodic line with eighth notes, including a sharp sign (#) in the second measure of each part.

26

Guitar

Banjo

Bass

Accordion

Violin

Detailed description: This system of music covers measures 26, 27, and 28. The Guitar part (top staff) features a complex texture with chords and single notes, including a sharp sign (#) above the staff in measures 26 and 28. The Banjo part (second staff) has a rhythmic pattern of eighth notes. The Bass part (third staff) consists of a simple eighth-note bass line. The Accordion (fourth staff) and Violin (fifth staff) parts play a melodic line of eighth notes, with a sharp sign (#) above the staff in measures 26 and 28.

29

Guitar

Banjo

Bass

Accordion

Violin

Detailed description: This system of music covers measures 29, 30, and 31. The Guitar part (top staff) continues with chords and single notes, including a sharp sign (#) above the staff in measures 29 and 30. The Banjo part (second staff) maintains its rhythmic eighth-note pattern. The Bass part (third staff) continues with its eighth-note bass line. The Accordion (fourth staff) and Violin (fifth staff) parts play a melodic line of eighth notes, with a sharp sign (#) above the staff in measures 29 and 30.

32

Guitar

Banjo

Bass

Accordian

Violin

35

Guitar

Banjo

Bass

Accordian

Violin

38

Guitar

Banjo

Bass

Accordian

Violin

41

Guitar

Banjo

Bass

Accordian

Violin

44

Guitar

Banjo

Bass

Accordian

Violin

Detailed description: This system of music covers measures 44, 45, and 46. The Guitar part (treble clef) features a steady accompaniment with chords and single notes. The Banjo part (treble clef) plays a rhythmic melody with eighth notes and some triplets. The Bass part (bass clef) provides a simple harmonic foundation with quarter notes. The Accordian and Violin parts (both treble clef) play a melodic line with eighth notes and some triplets, mirroring the Banjo's rhythm.

47

Guitar

Banjo

Bass

Accordian

Violin

Detailed description: This system of music covers measures 47, 48, and 49. The Guitar part (treble clef) continues with its accompaniment, including some chord changes. The Banjo part (treble clef) maintains its rhythmic melody. The Bass part (bass clef) continues with its simple harmonic line. The Accordian and Violin parts (both treble clef) continue with their melodic line, which includes some triplet patterns.



50

Guitar

Banjo

Bass

Accordian

Violin

53

Guitar

Banjo

Bass

Accordian

Violin

56

Guitar

Banjo

Bass

Accordian

Violin

59

Guitar

Banjo

Bass

Accordian

Violin

62

Guitar

Banjo

Bass

Accordian

Violin

65

Guitar

Banjo

Bass

Accordian

Violin

68

Guitar

Banjo

Bass

Accordian

Violin

71

Guitar

Banjo

Bass

Accordian

Violin

74

Guitar

Banjo

Bass

Accordian

Violin

77

Guitar

Banjo

Bass

Accordian

Violin

80

Guitar

Banjo

Bass

Accordian

Violin

83

Guitar

Banjo

Bass

Accordian

Violin

86

Guitar

Banjo

Bass

Accordian

Violin

89

Guitar

Banjo

Bass

Accordian

Violin

92

Guitar

Banjo

Bass

Accordian

Violin

This system of music covers measures 92, 93, and 94. It features five staves: Guitar, Banjo, Bass, Accordian, and Violin. The Guitar staff uses a treble clef and contains a series of chords, with a sharp sign (#) appearing above the first and third measures. The Banjo staff uses a treble clef and contains a rhythmic pattern of eighth notes. The Bass staff uses a bass clef and contains a simple bass line of quarter notes. The Accordian and Violin staves use treble clefs and contain a melodic line of eighth notes.

95

Guitar

Banjo

Bass

Accordian

Violin

This system of music covers measures 95, 96, 97, and 98. It features five staves: Guitar, Banjo, Bass, Accordian, and Violin. The Guitar staff uses a treble clef and contains a series of chords, with a sharp sign (#) appearing above the second and fourth measures. The Banjo staff uses a treble clef and contains a rhythmic pattern of eighth notes. The Bass staff uses a bass clef and contains a simple bass line of quarter notes. The Accordian and Violin staves use treble clefs and contain a melodic line of eighth notes.



# Ierse Folksong - Wheels Of The World

Guitar

♩ = 220,000214

7

13

19

25

31

37

43

49

55

The image displays a guitar score for the piece 'Ierse Folksong - Wheels Of The World'. It consists of ten staves of music, each representing a measure of the piece. The music is written in a 4/4 time signature and features a complex, rhythmic pattern of chords and single notes. The chords are primarily triads and dyads, with some more complex voicings. The notes are mostly eighth and sixteenth notes, creating a driving, rhythmic feel. The score is presented in a clean, black-and-white format, suitable for printing and use as a reference for guitarists.

V.S.

61



67



73



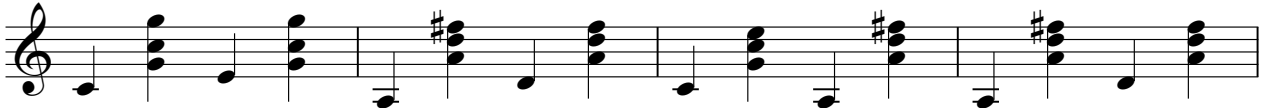
79



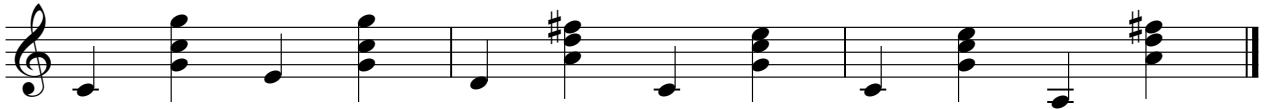
85



91



95



# larse Folksong - Wheels Of The World

Banjo

♩ = 220,000214

5

9

13

17

21

25

29

33

37

V.S.



Banjo

3

81

Musical notation for Banjo, measures 81-84. Measure 81 starts with a treble clef and contains a quarter note G4, quarter note A4, quarter note B4, and quarter note C5. Measures 82-84 contain eighth-note patterns with various accidentals.

85

Musical notation for Banjo, measures 85-88. Measure 85 starts with a treble clef and contains a quarter note G4, quarter note A4, quarter note B4, and quarter note C5. Measures 86-88 contain eighth-note patterns with various accidentals.

89

Musical notation for Banjo, measures 89-92. Measure 89 starts with a treble clef and contains a quarter note G4, quarter note A4, quarter note B4, and quarter note C5. Measures 90-92 contain eighth-note patterns with various accidentals.

93

Musical notation for Banjo, measures 93-95. Measure 93 starts with a treble clef and contains a quarter note G4, quarter note A4, quarter note B4, and quarter note C5. Measures 94-95 contain eighth-note patterns with various accidentals.

96

Musical notation for Banjo, measures 96-98. Measure 96 starts with a treble clef and contains a quarter note G4, quarter note A4, quarter note B4, and quarter note C5. Measures 97-98 contain eighth-note patterns with various accidentals.

# erse Folksong - Wheels Of The World

Bass

♩ = 220,000214



V.S.

61



67



73



79



85



91



95



Accordian

larse Folksong - Wheels Of The World

♩ = 220,000214

5

9

13

17

21

25

29

V.S.



33



37



41



45



49



53



57



61



65

69

73

77

81

85

89

93

V.S.

4

# Accordion

96



Violin

larse Folksong - Wheels Of The World

♩ = 220,000214

5

9

13

17

21

25

29

33

37

Detailed description: This is a violin sheet music score for the piece 'larse Folksong - Wheels Of The World'. The music is written in 4/4 time with a key signature of one sharp (F#). The tempo is indicated as ♩ = 220,000214. The score consists of ten staves of music, each starting with a measure number: 5, 9, 13, 17, 21, 25, 29, 33, and 37. The notation includes various rhythmic values such as quarter, eighth, and sixteenth notes, as well as rests and accidentals. The piece concludes with a double bar line on the final staff.

V.S.



81



85



89



93



96

