

♩ = 125,000000

Bandoneon



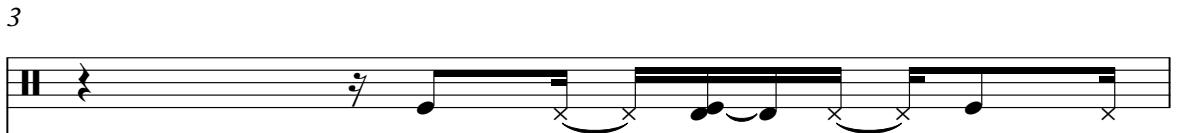
Bandoneon staff with a treble clef and a key signature of one sharp (F#). The staff contains five groups of triplet eighth notes. The first group starts on G4, the second on A4, the third on B4, the fourth on C5, and the fifth on D5. Each group is marked with a '3' below it.

Band.



Band staff with a treble clef and a key signature of one sharp (F#). The staff contains sixteenth notes and triplet eighth notes. The first three measures feature sixteenth notes, with the first measure marked with a '2' above and a '6' below. The last measure features a triplet eighth note marked with a '3' below.

Perc.



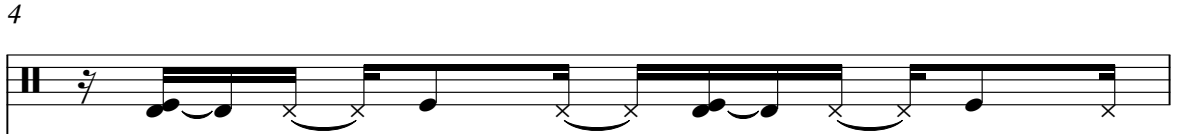
Percussion staff with a double bar line and a key signature of one sharp (F#). The staff contains rhythmic patterns with 'x' marks indicating specific sounds. The first measure has a '3' above it, and the last measure has an 'x' mark.

Band.



Band staff with a treble clef and a key signature of one sharp (F#). The staff contains eighth notes and triplet eighth notes. The first measure has a '3' above it, and the last measure has a '3' below it.

Perc.



Percussion staff with a double bar line and a key signature of one sharp (F#). The staff contains rhythmic patterns with 'x' marks indicating specific sounds. The first measure has a '3' above it, and the last measure has an 'x' mark.

Band.



Band staff with a treble clef and a key signature of one sharp (F#). The staff contains eighth notes and triplet eighth notes. The first measure has a '3' above it, and the last measure has a '3' below it.

Perc.



Percussion staff with a double bar line and a key signature of one sharp (F#). The staff contains rhythmic patterns with 'x' marks indicating specific sounds. The first measure has a '3' above it, and the last measure has an 'x' mark.

Band.



Band staff with a grand staff (treble and bass clefs) and a key signature of one sharp (F#). The staff contains eighth notes and triplet eighth notes. The first measure has a '3' above it, and the last measure has a '3' below it.


2


7

Perc. 

Band. 

9

Perc. 

Band. 

10

Perc. 

Band. 

Lead 4 

12

Perc. 

Lead 4 

14

Perc. 

Lead 4 

16

Perc. 

Lead 4 

18

Perc. 

Lead 4 

Percussion

♩ = 125,000000
2



5



7



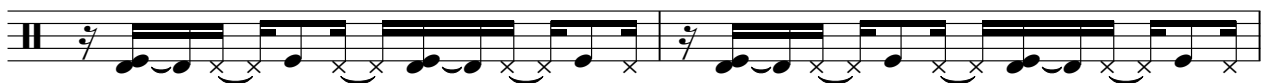
9



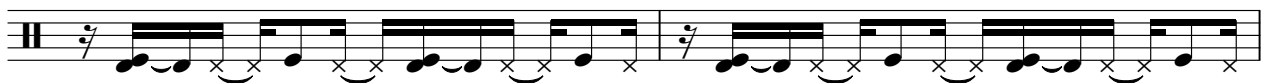
11



13



15



17



Bandoneon

♩ = 125,000000



3



5



7



9



Lead 4 (Chiff)

♩ = 125,000000

9

12

14

16

18