

# Iron Maiden - Revelations

♩ = 140,000137  
Clean Electric Guitar

Clean Electric Guitar

Rhythm Guitar

Lead Guitar

Harmony Guitar

Electric Bass

♩ = 140,000137  
Vocals

Vocals

5

Rhythm Guitar

Electric Bass

9

Rhythm Guitar

Electric Bass

13

Rhythm Guitar

Electric Bass

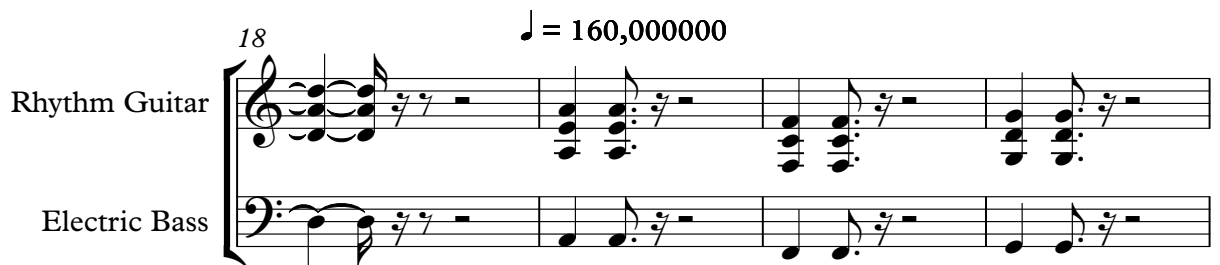


18

$\text{♩} = 160,000,000$

Rhythm Guitar

Electric Bass



22

Rhythm Guitar

Electric Bass



26

Rhythm Guitar

Electric Bass

Vocals



30

Rhythm Guitar

Electric Bass

Vocals

34

Rhythm Guitar

Electric Bass

Vocals

38

Rhythm Guitar

Lead Guitar

Harmony Guitar

Electric Bass

Vocals

42

Clean Electric Guitar

Lead Guitar

Harmony Guitar

Electric Bass

Vocals

Detailed description of measures 42-44: The score consists of five staves. The Clean Electric Guitar staff (top) features a continuous eighth-note pattern. The Lead Guitar staff has quarter notes and eighth notes. The Harmony Guitar staff has quarter notes. The Electric Bass staff has quarter notes. The Vocals staff has rests on a low note.

45

Clean Electric Guitar

Lead Guitar

Harmony Guitar

Electric Bass

Detailed description of measures 45-47: The score consists of four staves. The Clean Electric Guitar staff (top) features a continuous eighth-note pattern. The Lead Guitar staff has eighth-note triplets and quarter notes. The Harmony Guitar staff has eighth-note triplets and quarter notes. The Electric Bass staff has quarter notes.

48

Clean Electric Guitar

Lead Guitar

Harmony Guitar

Electric Bass

51

Clean Electric Guitar

Lead Guitar

Harmony Guitar

Electric Bass

54

Clean Electric Guitar

Lead Guitar

Harmony Guitar

Electric Bass

57

Rhythm Guitar

Lead Guitar

Harmony Guitar

Electric Bass

Detailed description: This system covers measures 57 to 60. The Rhythm Guitar part consists of a series of chords: two eighth notes, a quarter note, and a half note. The Lead Guitar and Harmony Guitar parts play a triplet of eighth notes in the first measure, followed by rests. The Electric Bass part features a walking bass line with eighth notes and quarter notes.

61

Rhythm Guitar

Electric Bass

Detailed description: This system covers measures 61 to 64. The Rhythm Guitar part continues with a similar chordal pattern as in the previous system. The Electric Bass part continues with a walking bass line.

65

$\text{♩} = 200,000000$

Rhythm Guitar

Lead Guitar

Harmony Guitar

Electric Bass

Detailed description: This system covers measures 65 to 68. The Rhythm Guitar part has a chordal pattern. The Lead Guitar part has a melodic line with eighth notes. The Harmony Guitar part has a melodic line with eighth notes. The Electric Bass part has a walking bass line with eighth notes.

68

Rhythm Guitar

Lead Guitar

Harmony Guitar

Electric Bass

This system covers measures 68, 69, and 70. The Rhythm Guitar part features a series of chords and arpeggios. The Lead Guitar part has a melodic line with some bends. The Harmony Guitar part provides a simple accompaniment. The Electric Bass part has a steady eighth-note line.

71

Rhythm Guitar

Lead Guitar

Harmony Guitar

Electric Bass

This system covers measures 71, 72, and 73. The Rhythm Guitar part features a series of chords and arpeggios. The Lead Guitar part has a melodic line with some bends. The Harmony Guitar part provides a simple accompaniment. The Electric Bass part has a steady eighth-note line.

74

Rhythm Guitar

Lead Guitar

Harmony Guitar

Electric Bass

This system covers measures 74, 75, and 76. The Rhythm Guitar part features a series of chords and arpeggios. The Lead Guitar part has a melodic line with some bends. The Harmony Guitar part provides a simple accompaniment. The Electric Bass part has a steady eighth-note line.

77

Rhythm Guitar

Lead Guitar

Harmony Guitar

Electric Bass



80 ♩ = 160,000000

Clean Electric Guitar

Rhythm Guitar

Lead Guitar

Harmony Guitar

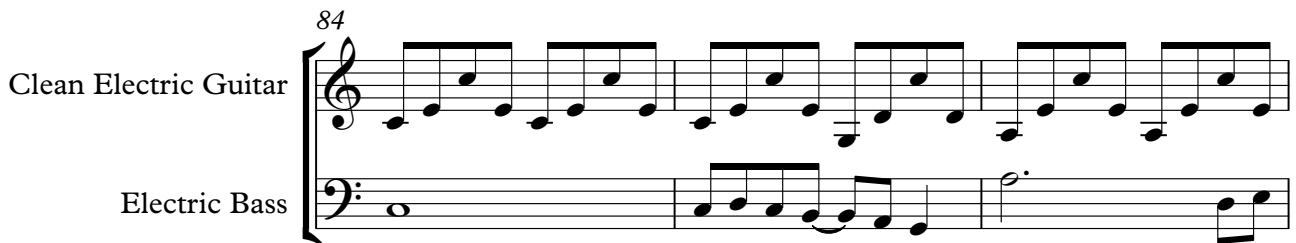
Electric Bass



84

Clean Electric Guitar

Electric Bass





87

Clean Electric Guitar

Electric Bass

90

Clean Electric Guitar

Electric Bass

Vocals

93

Clean Electric Guitar

Electric Bass

Vocals

96

Clean Electric Guitar

Electric Bass

Vocals

99

Clean Electric Guitar

Electric Bass

Vocals

This system covers measures 99 to 101. The Clean Electric Guitar part features a consistent eighth-note arpeggiated pattern in the treble clef. The Electric Bass part provides a rhythmic foundation with a mix of quarter and eighth notes in the bass clef. The Vocals part consists of a melodic line with quarter and eighth notes in the treble clef.

102

Clean Electric Guitar

Electric Bass

Vocals

This system covers measures 102 to 104. The Clean Electric Guitar part continues with the eighth-note arpeggiated pattern. The Electric Bass part maintains the rhythmic pattern with quarter and eighth notes. The Vocals part continues the melodic line with quarter and eighth notes.

105

Rhythm Guitar

Electric Bass

Vocals

This system covers measures 105 to 107. The Rhythm Guitar part introduces a new texture with chords and eighth notes in the treble clef. The Electric Bass part continues with quarter and eighth notes in the bass clef. The Vocals part continues the melodic line with quarter and eighth notes in the treble clef.

108

Rhythm Guitar

Electric Bass

Vocals

Detailed description: This system covers measures 108, 109, and 110. The Rhythm Guitar part (treble clef) starts with a G major chord (G-B-D) in measure 108. In measure 109, it plays a sequence of chords: G major, A minor, B minor, and C major. In measure 110, it plays G major, A minor, B minor, and C major. The Electric Bass part (bass clef) starts with a G note in measure 108. In measure 109, it plays a sequence of notes: A, B, C, D, E, F, G, A. In measure 110, it plays a sequence of notes: B, C, D, E, F, G, A. The Vocals part (treble clef) starts with a G note in measure 108. In measure 109, it plays a sequence of notes: A, B, C, D, E, F, G, A. In measure 110, it plays a sequence of notes: B, C, D, E, F, G, A.

111

Rhythm Guitar

Electric Bass

Vocals

Detailed description: This system covers measures 111, 112, and 113. The Rhythm Guitar part (treble clef) starts with a G major chord (G-B-D) in measure 111. In measure 112, it plays a sequence of chords: G major, A minor, B minor, and C major. In measure 113, it plays G major, A minor, B minor, and C major. The Electric Bass part (bass clef) starts with a G note in measure 111. In measure 112, it plays a sequence of notes: A, B, C, D, E, F, G, A. In measure 113, it plays a sequence of notes: B, C, D, E, F, G, A. The Vocals part (treble clef) starts with a G note in measure 111. In measure 112, it plays a sequence of notes: A, B, C, D, E, F, G, A. In measure 113, it plays a sequence of notes: B, C, D, E, F, G, A.

114

Clean Electric Guitar

Electric Bass

Vocals

Detailed description: This system covers measures 114, 115, and 116. The Clean Electric Guitar part (treble clef) starts with a G note in measure 114. In measure 115, it plays a sequence of notes: A, B, C, D, E, F, G, A. In measure 116, it plays a sequence of notes: B, C, D, E, F, G, A. The Electric Bass part (bass clef) starts with a G note in measure 114. In measure 115, it plays a sequence of notes: A, B, C, D, E, F, G, A. In measure 116, it plays a sequence of notes: B, C, D, E, F, G, A. The Vocals part (treble clef) is silent in all three measures.

117

Clean Electric Guitar

Electric Bass

Vocals

120

Clean Electric Guitar

Electric Bass

Vocals

123

Clean Electric Guitar

Electric Bass

Vocals

126

Clean Electric Guitar

Electric Bass

Vocals

129

Clean Electric Guitar

Electric Bass

Vocals

132

Clean Electric Guitar

Rhythm Guitar

Electric Bass

Vocals

135

Rhythm Guitar

Electric Bass

Vocals

138

Rhythm Guitar

Electric Bass

Vocals

141

Rhythm Guitar

Electric Bass

Vocals

$\text{♩} = 200,000000$

145

Rhythm Guitar

148

Rhythm Guitar

Rhythm Guitar

151

Rhythm Guitar

154

Rhythm Guitar

157

Rhythm Guitar

160

Rhythm Guitar

163

Rhythm Guitar

166

Rhythm Guitar

169

Rhythm Guitar

172

Rhythm Guitar

174

# Iron Maiden - Revelations

Clean Electric Guitar

♩ = 140,000137

♩ = 160,000000

Clean Electric Guitar

18 23

44

48

52

56 9 14 2

♩ = 200,000000      ♩ = 160,000000

82

86

90

94

98

Copyright © 1996 by NoteWorthy ArtWare, Inc.  
All Rights Reserved

V.S.



102 9




114



118



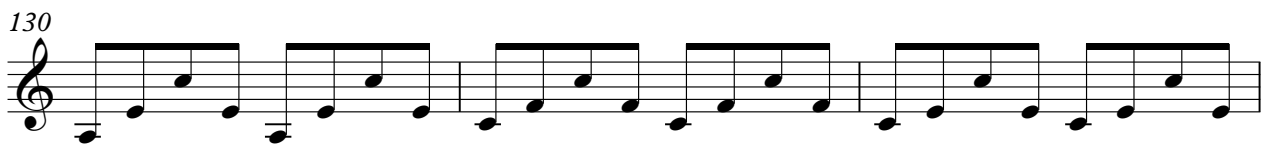
122



126

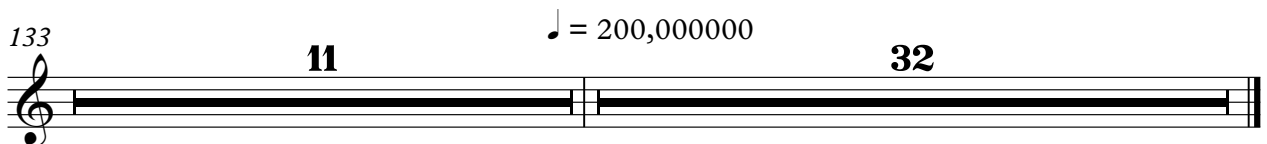


130



133 ♩ = 200,000000

**11** **32**



Rhythm Guitar

Iron Maiden - Revelations

♩ = 140,000137  
Rhythm Guitar

7

13

19 ♩ = 160,000000

25

30

35

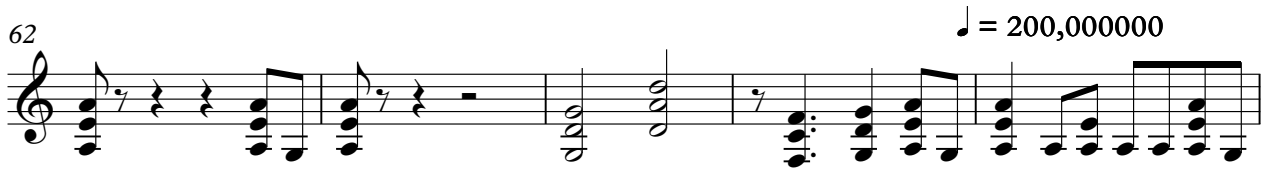
39

57



62

♩ = 200,000000



67



71



75



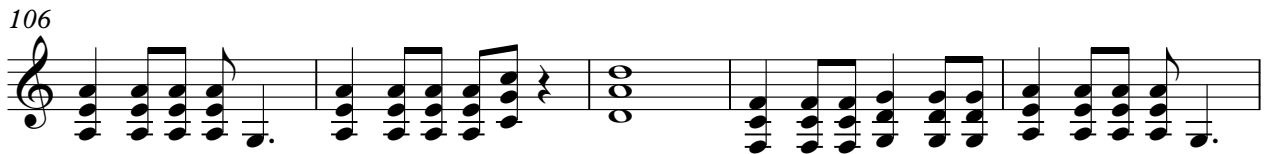
79

♩ = 160,000000

23



106

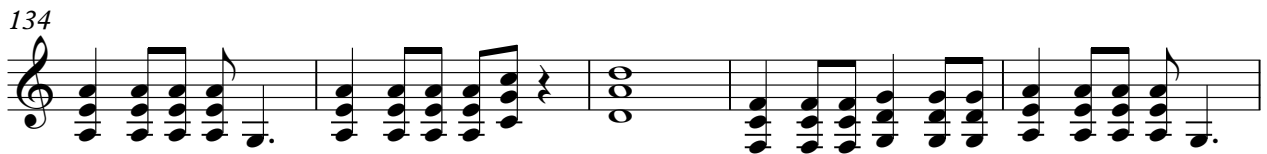


111

19



134



139

♩ = 200,000000



145



149



153



158



162



166



170



173



# Iron Maiden - Revelations

## Lead Guitar

♩ = 140,000137      ♩ = 160,000000

Lead Guitar **18**      **22**

44

49

54

65

71

76

81

**62**      **32**

♩ = 200,000000

Copyright © 1996 by NoteWorthy ArtWare, Inc.  
All Rights Reserved

# Iron Maiden - Revelations

## Harmony Guitar

♩ = 140,000137

♩ = 160,000000

Harmony Guitar

18 22

44

49

54 7

65 ♩ = 200,000000

71

76 ♩ = 160,000000

81 ♩ = 200,000000 62 32

Copyright © 1996 by NoteWorthy ArtWare, Inc.  
All Rights Reserved

# Iron Maiden - Revelations

## Electric Bass

♩ = 140,000137  
Electric Bass



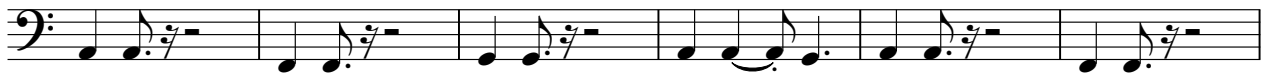
7



13



19 ♩ = 160,000000



25



31



36



41



47



53



Copyright © 1996 by NoteWorthy ArtWare, Inc.  
All Rights Reserved

V.S.

58



63

♩ = 200,000000



68



72



76



80 ♩ = 160,000000



86



93



99



105





110



116



122



129



135



140

♩ = 200,000000

**32**



# Iron Maiden - Revelations

## Vocals

♩ = 140,000137      ♩ = 160,000000

Vocals      **18**      **7**

29

35

41      **23**      ♩ = 200,000000      **14**

80      ♩ = 160,000000      **10**

94

100

106

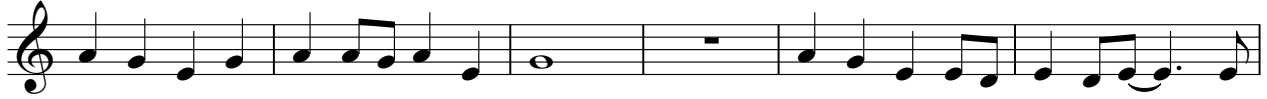
111      **2**

Copyright © 1996 by NoteWorthy ArtWare, Inc.  
All Rights Reserved

117



122



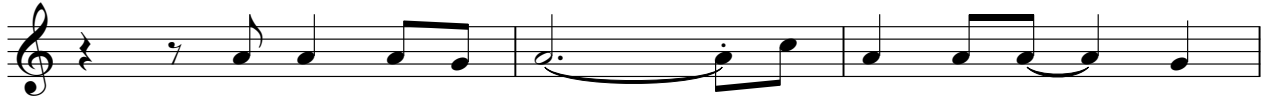
128



134



139



142

♩ = 200,000000

32

