

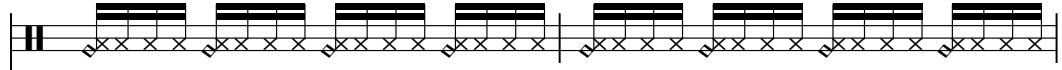

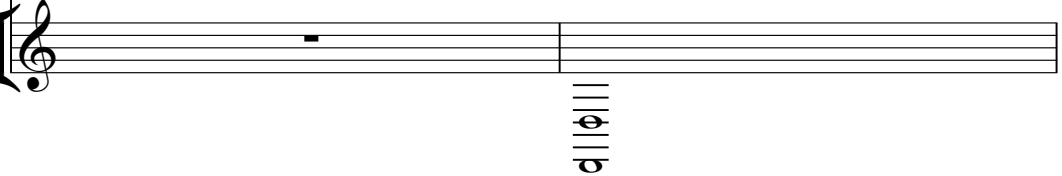


Jan Hammer - Crocket's Theme 2

♩ = 100,000000

DRUMS  FINGERDBAS 

3
DRUMS  FINGERDBAS  SYNBRASS 1 

5
DRUMS  FINGERDBAS  SYN STR 2 

7

DRUMS

FINGERDBAS

SYN STR 2

9

DRUMS

FINGERDBAS

SYN STR 2

11

DRUMS

FINGERDBAS

SYN STR 2

13

DRUMS

FINGERDBAS

SYN STR 2

SYNBRASS 1

guitar chord diagram: $\begin{matrix} | & | & | & | \\ | & | & | & | \\ | & | & | & | \\ | & | & | & | \\ | & | & | & | \\ | & | & | & | \\ | & | & | & | \\ | & | & | & | \end{matrix}$

15

DRUMS

FINGERDBAS

SYN STR 2

MELODY 1

17

DRUMS

FINGERDBAS

SYN STR 2

MELODY 1

19

DRUMS

FINGERDBAS

SYN STR 2

MELODY 1

21

DRUMS

FINGERDBAS

SYN STR 2

MELODY 1

23

DRUMS

FINGERDBAS

SYN STR 2

MELODY 1

25

DRUMS

FINGERDBAS

SYN STR 2

SYNBRASS 1

MELODY 1

27

DRUMS

FINGERDBAS

SYN STR 2

SYNBRASS 1

MELODY 1

29

DRUMS

FINGERDBAS

SYN STR 2

SYNBRASS 1

MELODY 1

31

DRUMS

FINGERDBAS

SYN STR 2

SYNBRASS 1

MELODY 1

33

DRUMS

FINGERDBAS

SYN STR 2

SYNBRASS 1

MELODY 1

35

DRUMS

FINGERDBAS

SYN STR 2

SYNBRASS 1

MELODY 1

37

DRUMS

FINGERDBAS

SYN STR 2

SYNBRASS 1

MELODY 1

Detailed description: This system covers measures 37 and 38. The DRUMS part features a consistent eighth-note hi-hat pattern. The FINGERDBAS part plays a steady eighth-note bass line. The SYN STR 2 part consists of block chords, with a key signature change to one flat (Bb) in measure 38. The SYNBRASS 1 part uses vertical bar lines to indicate chord changes. The MELODY 1 part features a melodic line with a key signature change to one flat in measure 38.

39

DRUMS

FINGERDBAS

SYN STR 2

SYNBRASS 1

MELODY 1

Detailed description: This system covers measures 39 and 40. The DRUMS part continues with the eighth-note hi-hat pattern. The FINGERDBAS part continues with the eighth-note bass line. The SYN STR 2 part features block chords, with a key signature change to two flats (Bb, Eb) in measure 39. The SYNBRASS 1 part uses vertical bar lines to indicate chord changes. The MELODY 1 part continues with the melodic line, showing a key signature change to two flats in measure 39.

41

DRUMS

FINGERDBAS

SYN STR 2

SYNBRASS 1

MELODY 1

43

DRUMS

FINGERDBAS

SYN STR 2

SYNBRASS 1

MELODY 1

45

DRUMS

FINGERDBAS

SYN STR 2

47

DRUMS

FINGERDBAS

SYN STR 2

49

DRUMS

FINGERDBAS

SYN STR 2

51

DRUMS

JAZZ GTR

MELODY 2

FINGERDBAS

SYN STR 2

SYNBRASS 1

Detailed description: This system covers measures 51 and 52. The DRUMS part features a consistent rhythmic pattern of eighth notes. The JAZZ GTR part has a rest in measure 51 and a melodic line in measure 52. MELODY 2 also has a rest in measure 51 and a melodic line in measure 52. FINGERDBAS plays a steady eighth-note bass line. SYN STR 2 and SYNBRASS 1 provide harmonic support with chords in measure 52.

53

DRUMS

JAZZ GTR

MELODY 2

FINGERDBAS

SYN STR 2

SYNBRASS 1

Detailed description: This system covers measures 53 and 54. The DRUMS part continues with the same rhythmic pattern. The JAZZ GTR part has a melodic line in measure 53 and a rest in measure 54. MELODY 2 has a melodic line in measure 53 and a rest in measure 54. FINGERDBAS plays a steady eighth-note bass line. SYN STR 2 and SYNBRASS 1 provide harmonic support with chords in measure 53.

54

DRUMS

JAZZ GTR

MELODY 2

FINGERDBAS

SYN STR 2

SYNBRASS 1

Detailed description: This system contains measures 54 and 55. The DRUMS staff shows a consistent rhythmic pattern with eighth notes and rests. The JAZZ GTR staff features a melodic line with a slur over the first two measures. The MELODY 2 staff has a similar melodic line. The FINGERDBAS staff shows a bass line with eighth notes and rests. The SYN STR 2 and SYNBRASS 1 staves are mostly empty, with some chord symbols and a few notes indicated at the bottom of the page.

55

DRUMS

JAZZ GTR

MELODY 2

FINGERDBAS

SYN STR 2

SYNBRASS 1

Detailed description: This system contains measures 55 and 56. The DRUMS staff continues the rhythmic pattern. The JAZZ GTR staff has a melodic line with a slur. The MELODY 2 staff has a melodic line. The FINGERDBAS staff shows a bass line with eighth notes and rests. The SYN STR 2 and SYNBRASS 1 staves have some chord symbols and notes indicated at the bottom of the page.

56

DRUMS

JAZZ GTR

MELODY 2

FINGERDBAS

SYN STR 2

SYNBRASS 1

57

DRUMS

JAZZ GTR

MELODY 2

FINGERDBAS

SYN STR 2

SYNBRASS 1

58

DRUMS

JAZZ GTR

MELODY 2

FINGERDBAS

SYN STR 2

SYNBRASS 1

59

DRUMS

JAZZ GTR

MELODY 2

FINGERDBAS

SYN STR 2

SYNBRASS 1

60

DRUMS

JAZZ GTR

MELODY 2

FINGERDBAS

SYN STR 2

SYNBRASS 1

61

DRUMS

FINGERDBAS

62

DRUMS

JAZZ GTR

MELODY 2

FINGERDBAS

SYN STR 2

SYNBRASS 1

63

DRUMS

JAZZ GTR

MELODY 2

FINGERDBAS

SYN STR 2

SYNBRASS 1

64

DRUMS

JAZZ GTR

MELODY 2

FINGERDBAS

SYN STR 2

SYNBRASS 1

65

DRUMS

JAZZ GTR

MELODY 2

FINGERDBAS

SYN STR 2

SYNBRASS 1

66

DRUMS

JAZZ GTR

MELODY 2

FINGERDBAS

SYN STR 2

SYNBRASS 1

67

DRUMS

JAZZ GTR

MELODY 2

FINGERDBAS

SYN STR 2

SYNBRASS 1

68

DRUMS

JAZZ GTR

MELODY 2

FINGERDBAS

SYN STR 2

SYNBRASS 1

Detailed description: This system covers measures 68 to 71. The DRUMS part features a consistent rhythmic pattern of eighth notes. The JAZZ GTR part has a melodic line with a slur over measures 69 and 70. MELODY 2 follows a similar melodic path. FINGERDBAS provides a bass line with eighth notes. SYN STR 2 and SYNBRASS 1 are shown as empty staves with chord diagrams below them, indicating sustained chords.

69

DRUMS

JAZZ GTR

MELODY 2

FINGERDBAS

SYN STR 2

SYNBRASS 1

Detailed description: This system covers measures 72 to 75. The DRUMS part continues with the same rhythmic pattern. The JAZZ GTR part has a melodic line with a slur over measures 73 and 74. MELODY 2 follows a similar melodic path. FINGERDBAS provides a bass line with eighth notes. SYN STR 2 and SYNBRASS 1 are shown as empty staves with chord diagrams below them, indicating sustained chords.

70

DRUMS

JAZZ GTR

MELODY 2

FINGERDBAS

SYN STR 2

SYNBASS 1

71

DRUMS

FINGERDBAS

SYN STR 2

72

DRUMS

FINGERDBAS

SYN STR 2

73

DRUMS

FINGERDBAS

SYN STR 2

74

DRUMS

FINGERDBAS

SYN STR 2

75

DRUMS

FINGERDBAS

SYN STR 2

76

DRUMS

FINGERDBAS

SYN STR 2

SYNBRASS 1

78

DRUMS

FINGERDBAS

SYN STR 2

SYNBRASS 1

MELODY 1

80

DRUMS

FINGERDBAS

SYN STR 2

SYNBRASS 1

MELODY 1

Detailed description: This system covers measures 80 and 81. The DRUMS part features a consistent eighth-note pattern. The FINGERDBAS part has a steady eighth-note bass line. The MELODY 1 part consists of a simple melodic line with quarter and eighth notes. The SYN STR 2 and SYNBRASS 1 parts are represented by vertical bar lines, indicating they are silent during these measures.

82

DRUMS

FINGERDBAS

SYN STR 2

SYNBRASS 1

MELODY 1

Detailed description: This system covers measures 82 and 83. The DRUMS part continues with its eighth-note pattern. The FINGERDBAS part maintains its eighth-note bass line. The MELODY 1 part continues with its melodic line. The SYN STR 2 and SYNBRASS 1 parts are represented by vertical bar lines, indicating they are silent during these measures.

84

DRUMS

FINGERDBAS

SYN STR 2

SYNBRASS 1

MELODY 1

86

DRUMS

FINGERDBAS

SYN STR 2

SYNBRASS 1

MELODY 1

88


DRUMS

FINGERDBAS


6

89

DRUMS




FINGERDBAS




90

DRUMS




FINGERDBAS




91

DRUMS




FINGERDBAS




92

DRUMS




FINGERDBAS




93

DRUMS



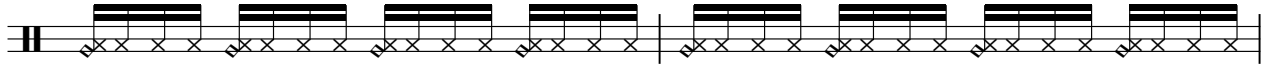
FINGERDBAS



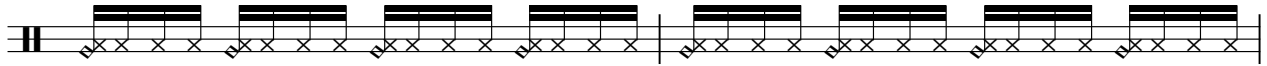
2

DRUMS

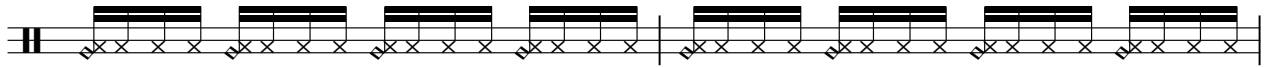
22



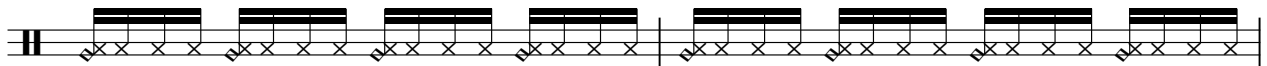
24



26



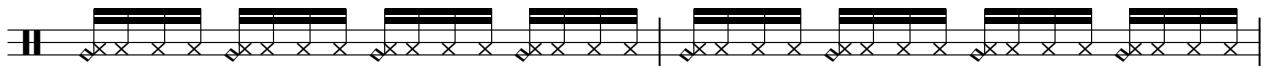
28



30



32



34



36



38



40



DRUMS

42



44



46



48



50



52



54



56



58



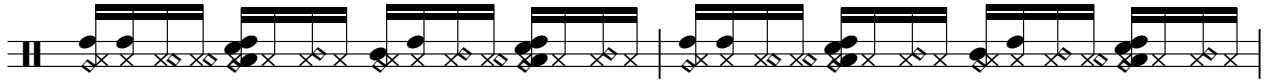
60



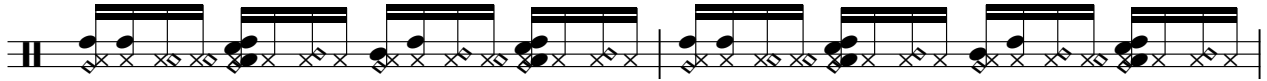
V.S.

DRUMS

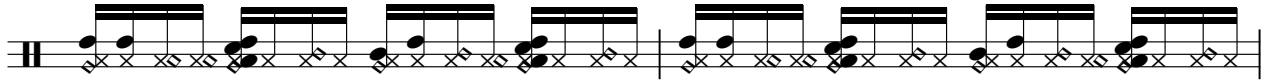
62



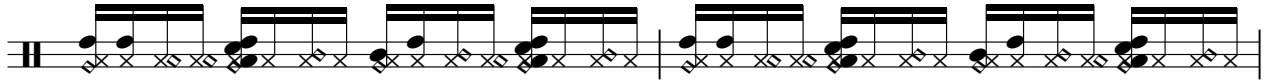
64



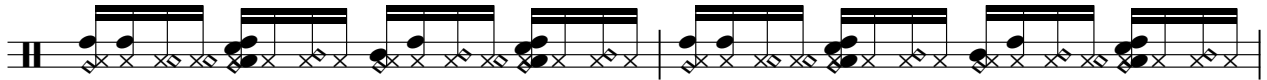
66



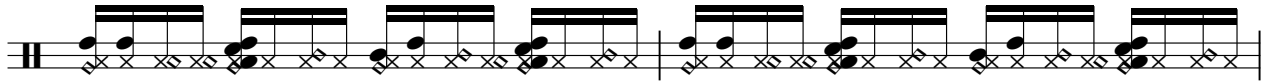
68



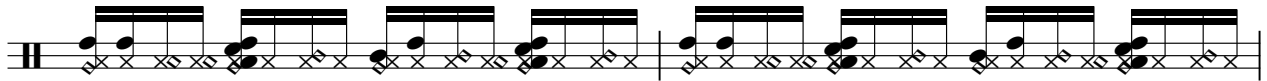
70



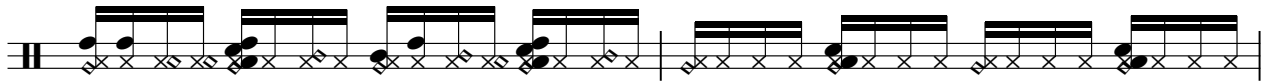
72



74



76



78



80



DRUMS

82



84



86



88



90



92



♩ = 100,000000

51

55

60

66

69

24

22



24



26



28



30



32



34



36



38



40



FINGERDBAS

42

62



64



66



68



70



72



74



76



78



80



FINGERDBAS

82



84



86



88



90



92



93



SYN STR 2

Jan Hammer - Crocket's Theme 2

♩ = 100,000000

5

12

20

28

36

44

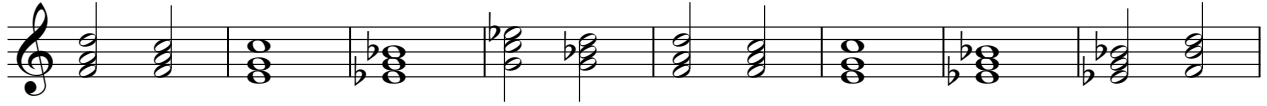
53

57

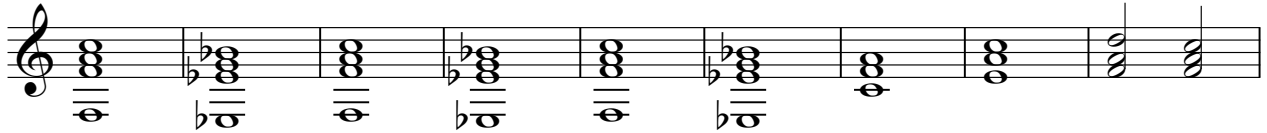
2

SYN STR 2

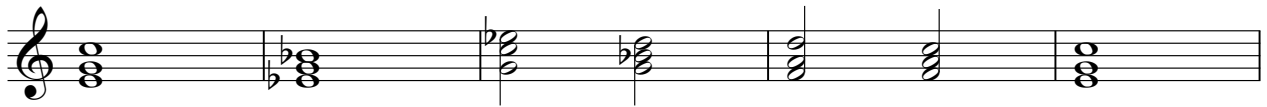
62



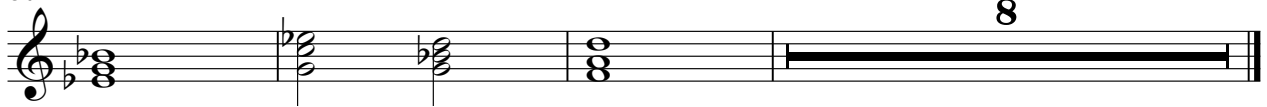
70



79



84



Jan Hammer - Crocket's Theme 2

SYNBRASS 1

♩ = 100,000000

3 9 11

27

35

43 6

55

63

71 6

82 8

Jan Hammer - Crocket's Theme 2

MELODY 1

♩ = 100,000000

15

20

25

30

35

40

45

33

81

85

8