

98 Degrees - The Hardest Thing

♩ = 100,000000

Drums-2

Drums

Staff-2

Staff-4

4

Drums-2

Drums

Staff-2

Staff-4

Copyright © <Year> by <Name> All Rights Reserved

6

Drums-2

Drums

Staff-2

Staff-4

8

Drums-2

Drums

Staff-2

Staff-4

10

Drums-2

Drums

Staff-2

Staff-4

12

Drums-2
Drums
Staff-2
Staff-4

This system contains measures 12 and 13. It features four staves: Drums-2, Drums, Staff-2, and Staff-4. The Drums-2 staff has a treble clef and a 7/8 time signature, with notes and rests including 'x' marks. The Drums staff has a treble clef and a 7/8 time signature, with a continuous eighth-note pattern. Staff-2 has a bass clef and a 7/8 time signature, with notes and rests. Staff-4 has a treble clef and a 7/8 time signature, with chords and rests.

14

Drums-2
Drums
Staff-2
Staff-4

This system contains measures 14 and 15. It features four staves: Drums-2, Drums, Staff-2, and Staff-4. The Drums-2 staff has a treble clef and a 7/8 time signature, with notes and rests including 'x' marks. The Drums staff has a treble clef and a 7/8 time signature, with a continuous eighth-note pattern. Staff-2 has a bass clef and a 7/8 time signature, with notes and rests. Staff-4 has a treble clef and a 7/8 time signature, with chords and rests.

16

Drums-2
Drums
Staff-2
Staff-4

This system contains measures 16 and 17. It features four staves: Drums-2, Drums, Staff-2, and Staff-4. The Drums-2 staff has a treble clef and a 7/8 time signature, with notes and rests including 'x' marks. The Drums staff has a treble clef and a 7/8 time signature, with a continuous eighth-note pattern. Staff-2 has a bass clef and a 7/8 time signature, with notes and rests. Staff-4 has a treble clef and a 7/8 time signature, with chords and rests.

18

Drums-2

Drums

Staff-2

Staff-1

Staff-4

Detailed description: This system covers measures 18 and 19. The 'Drums-2' staff features a melodic line with eighth notes and rests, marked with 'x.' above the notes. The 'Drums' staff shows a steady eighth-note pattern. 'Staff-2' (bass clef) has a simple bass line. 'Staff-1' (treble clef) has a melodic line with eighth notes. 'Staff-4' (treble clef) has a chordal accompaniment with a triplet of eighth notes in measure 18.

20

Drums-2

Drums

Staff-1

Staff-4

Detailed description: This system covers measures 20 and 21. The drum parts remain consistent. 'Staff-1' (treble clef) has a melodic line with eighth notes and a change in rhythm in measure 21. 'Staff-4' (treble clef) has a chordal accompaniment with a triplet of eighth notes in measure 20.

22

Drums-2

Drums

Staff-1

Staff-4

Detailed description: This system covers measures 22 and 23. The drum parts remain consistent. 'Staff-1' (treble clef) has a melodic line with a triplet of eighth notes in measure 22. 'Staff-4' (treble clef) has a chordal accompaniment with a triplet of eighth notes in measure 22.

24

Drums-2

Drums

Staff-1

Staff-4

26

Drums-2

Drums

Staff-3

Staff-1

Staff-4

28

Drums-2

Drums

Staff-1

Staff-4

30

Drums-2
Drums
Staff-3
Staff-1
Staff-4

This musical score block covers measures 30 and 31. It features five staves: Drums-2, Drums, Staff-3, Staff-1, and Staff-4. The Drums-2 staff uses a snare drum (H) and contains a melodic line with eighth notes and rests, including two measures with an 'x' above a note. The Drums staff uses a hi-hat (H) and contains a steady eighth-note pattern. Staff-3, Staff-1, and Staff-4 are in treble clef. Staff-3 begins with a whole rest followed by a key signature change to B-flat major. Staff-1 and Staff-4 contain melodic and harmonic accompaniment for the vocal line.

32

Drums-2
Drums
Staff-3
Staff-1
Staff-4

This musical score block covers measures 32 and 33. It features five staves: Drums-2, Drums, Staff-3, Staff-1, and Staff-4. The Drums-2 staff continues the melodic line from the previous block, with 'x' marks above notes in measures 32 and 33. The Drums staff maintains the eighth-note pattern. Staff-3, Staff-1, and Staff-4 continue the vocal and accompaniment parts, with Staff-3 showing a key signature change to B-flat major.

34

Drums-2

Drums

Staff-3

Staff-1

Staff-4

Detailed description: This block contains the musical notation for measures 34 and 35. It features five staves. The top staff, labeled 'Drums-2', uses a snare drum clef and contains a melodic line with eighth notes and two measures marked with an 'x' above a note. The second staff, labeled 'Drums', uses a bass drum clef and contains a steady eighth-note pattern. The third staff, labeled 'Staff-3', is a treble clef staff with a melodic line of eighth notes. The fourth staff, labeled 'Staff-1', is a treble clef staff with a melodic line of eighth notes. The fifth staff, labeled 'Staff-4', is a treble clef staff with a chordal accompaniment consisting of two chords per measure.

36

Drums-2

Drums

Staff-3

Staff-1

Staff-4

Detailed description: This block contains the musical notation for measures 36 and 37. It features five staves. The top staff, labeled 'Drums-2', uses a snare drum clef and contains a melodic line with eighth notes and two measures marked with an 'x' above a note. The second staff, labeled 'Drums', uses a bass drum clef and contains a steady eighth-note pattern. The third staff, labeled 'Staff-3', is a treble clef staff with a melodic line that includes a half note in the first measure followed by eighth notes. The fourth staff, labeled 'Staff-1', is a treble clef staff with a melodic line that includes a half note in the first measure followed by eighth notes. The fifth staff, labeled 'Staff-4', is a treble clef staff with a chordal accompaniment consisting of two chords per measure.

38

Drums-2

Drums

Staff-3

Staff-1

40

Drums-2

Drums

Staff-1

42

Drums-2

Drums

Staff-3

Staff-1

44

Drums-2

Drums

Staff-3

Staff-1

Staff-4

Detailed description: This block contains the musical notation for measures 44 and 45. It features five staves. The top two staves are labeled 'Drums-2' and 'Drums'. The bottom three staves are labeled 'Staff-3', 'Staff-1', and 'Staff-4'. The notation includes various rhythmic patterns, rests, and accidentals (sharps, flats, and naturals) across the different parts.

46

Drums-2

Drums

Staff-3

Staff-1

Staff-4

Detailed description: This block contains the musical notation for measures 46 and 47. It features five staves. The top two staves are labeled 'Drums-2' and 'Drums'. The bottom three staves are labeled 'Staff-3', 'Staff-1', and 'Staff-4'. The notation includes various rhythmic patterns, rests, and accidentals (sharps, flats, and naturals) across the different parts.

48

Drums-2

Drums

Staff-3

Staff-1

Staff-4

50

Drums-2

Drums

Staff-3

Staff-1

Staff-4

52

Drums-2

Drums

Staff-3

Staff-1

Staff-4

Detailed description: This block contains musical notation for measures 52 and 53. It features five staves. The top two staves are labeled 'Drums-2' and 'Drums'. The bottom three staves are labeled 'Staff-3', 'Staff-1', and 'Staff-4'. The notation includes various rhythmic patterns, rests, and accidentals across these staves.

54

Drums-2

Drums

Staff-3

Staff-1

Detailed description: This block contains musical notation for measures 54 and 55. It features four staves. The top two staves are labeled 'Drums-2' and 'Drums'. The bottom two staves are labeled 'Staff-3' and 'Staff-1'. The notation includes various rhythmic patterns, rests, and accidentals across these staves.

56

Drums-2

Drums

Staff-3

Staff-1

Staff-4

Detailed description: This block contains the musical notation for measures 56 and 57. It features five staves. The top two staves are labeled 'Drums-2' and 'Drums'. The bottom three staves are labeled 'Staff-3', 'Staff-1', and 'Staff-4'. The notation includes various rhythmic patterns, rests, and accidentals across all staves.

58

Drums-2

Drums

Staff-3

Staff-1

Staff-4

Detailed description: This block contains the musical notation for measures 58 and 59. It features five staves. The top two staves are labeled 'Drums-2' and 'Drums'. The bottom three staves are labeled 'Staff-3', 'Staff-1', and 'Staff-4'. The notation includes various rhythmic patterns, rests, and accidentals across all staves.

60

Drums-2
Drums
Staff-3
Staff-1
Staff-4

This system contains measures 60 and 61. It features five staves: Drums-2, Drums, Staff-3, Staff-1, and Staff-4. Drums-2 and Drums are in a 2/4 time signature. Drums-2 has a melodic line with accents (x) over the final notes of each measure. Drums has a steady eighth-note pattern. Staff-3 and Staff-1 are in treble clef with a key signature of one flat (B-flat). Staff-3 has a melodic line with a half-note rest in measure 61. Staff-4 is in treble clef with a key signature of one flat, playing a sustained chord.

62

Drums-2
Drums
Staff-3
Staff-1
Staff-4

This system contains measures 62 and 63. It features five staves: Drums-2, Drums, Staff-3, Staff-1, and Staff-4. Drums-2 and Drums are in a 2/4 time signature. Drums-2 has a melodic line with accents (x) over the final notes of each measure. Drums has a steady eighth-note pattern. Staff-3 and Staff-1 are in treble clef with a key signature of one flat (B-flat). Staff-3 has a melodic line with a half-note rest in measure 63. Staff-4 is in treble clef with a key signature of one flat, playing a sustained chord.

64

Drums-2
Drums
Staff-1

This system contains measures 64 and 65. It features three staves: Drums-2, Drums, and Staff-1. Drums-2 and Drums are in a 2/4 time signature. Drums-2 has a melodic line with accents (x) over the final notes of each measure. Drums has a steady eighth-note pattern. Staff-1 is in treble clef with a key signature of one flat (B-flat), playing a melodic line.

66

Drums-2

Drums

Staff-3

Staff-1

Detailed description: This block contains the musical notation for measures 66 and 67. It features four staves. The top staff, labeled 'Drums-2', uses a drum set icon and contains a melodic line with eighth notes and rests, marked with 'x' above the notes. The second staff, labeled 'Drums', also uses a drum set icon and contains a steady eighth-note pattern. The third staff, labeled 'Staff-3', is in treble clef and contains a melodic line with eighth notes and rests. The bottom staff, labeled 'Staff-1', is in treble clef and contains a melodic line with eighth notes and rests. The key signature has one sharp (F#) and the time signature is 7/8.

68

Drums-2

Drums

Staff-3

Staff-1

Staff-4

Detailed description: This block contains the musical notation for measures 68 and 69. It features five staves. The top staff, labeled 'Drums-2', uses a drum set icon and contains a melodic line with eighth notes and rests, marked with 'x' above the notes. The second staff, labeled 'Drums', uses a drum set icon and contains a steady eighth-note pattern. The third staff, labeled 'Staff-3', is in treble clef and contains a melodic line with eighth notes and rests. The fourth staff, labeled 'Staff-1', is in treble clef and contains a melodic line with eighth notes and rests. The fifth staff, labeled 'Staff-4', is in treble clef and contains a bass line with a few notes. The key signature has one sharp (F#) and the time signature is 7/8.

70

Drums-2

Drums

Staff-3

Staff-1

Staff-4

72

Drums-2

Drums

Staff-3

Staff-1

Staff-4

74

Drums-2

Drums

Staff-4

76

Drums-2

Drums

Staff-3

Staff-1

Staff-4

Detailed description: This block contains the musical notation for measures 76 and 77. It features five staves. The top two staves are labeled 'Drums-2' and 'Drums'. The bottom three staves are labeled 'Staff-3', 'Staff-1', and 'Staff-4'. The notation includes various rhythmic patterns, rests, and accidentals. Measure 76 starts with a 7/8 time signature. Measure 77 continues the pattern. The 'Drums-2' staff has notes with 'x' marks above them. The 'Drums' staff has a consistent eighth-note pattern. 'Staff-3' and 'Staff-1' have melodic lines, while 'Staff-4' has a bass line with chords.

78

Drums-2

Drums

Staff-3

Staff-1

Staff-4

Detailed description: This block contains the musical notation for measures 78 and 79. It features five staves. The top two staves are labeled 'Drums-2' and 'Drums'. The bottom three staves are labeled 'Staff-3', 'Staff-1', and 'Staff-4'. The notation includes various rhythmic patterns, rests, and accidentals. Measure 78 starts with a 7/8 time signature. Measure 79 continues the pattern. The 'Drums-2' staff has notes with 'x' marks above them. The 'Drums' staff has a consistent eighth-note pattern. 'Staff-3' and 'Staff-1' have melodic lines with triplets in measure 79. 'Staff-4' has a bass line with chords.

80

Drums-2
Drums
Staff-3
Staff-2
Staff-1
Staff-4

This musical system covers measures 80 and 81. It features six staves: Drums-2, Drums, Staff-3, Staff-2, Staff-1, and Staff-4. The Drums-2 and Drums staves are in a 2/4 time signature. Drums-2 has a melodic line with eighth notes and rests, marked with 'x' above the final notes of each measure. Drums has a steady eighth-note pattern. Staff-3, Staff-1, and Staff-4 are in treble clef, while Staff-2 is in bass clef. Staff-3 and Staff-1 have similar melodic lines with eighth notes and rests. Staff-2 and Staff-4 have fewer notes, with Staff-4 showing a chordal structure.

82

Drums-2
Drums
Staff-3
Staff-2
Staff-1
Staff-4

This musical system covers measures 82 and 83. It features six staves: Drums-2, Drums, Staff-3, Staff-2, Staff-1, and Staff-4. The Drums-2 and Drums staves are in a 2/4 time signature. Drums-2 has a melodic line with eighth notes and rests, marked with 'x' above the final notes of each measure. Drums has a steady eighth-note pattern. Staff-3, Staff-1, and Staff-4 are in treble clef, while Staff-2 is in bass clef. Staff-3 and Staff-1 have similar melodic lines with eighth notes and rests. Staff-2 and Staff-4 have fewer notes, with Staff-4 showing a chordal structure.

84

Drums-2
Drums
Staff-3
Staff-2
Staff-1
Staff-4

Detailed description: This system of music covers measures 84 and 85. It features six staves. The top two staves are labeled 'Drums-2' and 'Drums'. The bottom four staves are labeled 'Staff-3', 'Staff-2', 'Staff-1', and 'Staff-4'. The music is in 7/8 time. Measures 84 and 85 are marked with a repeat sign. The drum parts include a snare line with 'x' marks and a bass drum line with a consistent rhythmic pattern. The melodic staves (Staff-3, Staff-2, Staff-1, Staff-4) contain eighth and quarter notes, with a key signature of one flat.

86

Drums-2
Drums
Staff-3
Staff-2
Staff-1
Staff-4

Detailed description: This system of music covers measures 86 and 87. It features six staves. The top two staves are labeled 'Drums-2' and 'Drums'. The bottom four staves are labeled 'Staff-3', 'Staff-2', 'Staff-1', and 'Staff-4'. The music is in 7/8 time. Measures 86 and 87 are marked with a repeat sign. The drum parts continue with the same patterns as in the previous system. The melodic staves (Staff-3, Staff-2, Staff-1, Staff-4) continue with eighth and quarter notes, maintaining the one-flat key signature.

88

Drums-2

Drums

Staff-3

Staff-2

Staff-1

Detailed description: This block contains the musical notation for measures 88 and 89. It features five staves. The top two staves are labeled 'Drums-2' and 'Drums'. The bottom three staves are labeled 'Staff-3', 'Staff-2', and 'Staff-1'. The music is in 7/8 time and B-flat major. The drum parts include a snare line with 'x' marks and a bass drum line with a consistent eighth-note pattern. The melodic parts in Staff-1, Staff-2, and Staff-3 consist of eighth-note and quarter-note patterns.

90

Drums-2

Drums

Staff-2

Staff-1

Detailed description: This block contains the musical notation for measures 90 and 91. It features four staves. The top two staves are labeled 'Drums-2' and 'Drums'. The bottom two staves are labeled 'Staff-2' and 'Staff-1'. The music continues in 7/8 time and B-flat major. The drum parts are similar to the previous block. The melodic parts in Staff-1 and Staff-2 show some chromatic movement, including a key signature change to B major in measure 91.

92

Drums-2

Drums

Staff-3

Staff-2

Staff-1

Detailed description: This system of music covers measures 92 and 93. It features five staves. The top staff, labeled 'Drums-2', uses a snare drum and contains a melodic line with eighth notes and rests, marked with 'x.' above the notes. The second staff, labeled 'Drums', uses a hi-hat and contains a steady eighth-note pattern. The third staff, labeled 'Staff-3', is in treble clef and contains a melodic line with eighth notes and rests. The fourth staff, labeled 'Staff-2', is in bass clef and contains a simple bass line with quarter notes. The fifth staff, labeled 'Staff-1', is in treble clef and contains a melodic line with eighth notes and rests. The key signature has one flat (B-flat) and the time signature is 7/8.

94

Drums-2

Drums

Staff-3

Staff-2

Staff-1

Staff-4

Detailed description: This system of music covers measures 94 and 95. It features five staves. The top staff, labeled 'Drums-2', uses a snare drum and contains a melodic line with eighth notes and rests, marked with 'x.' above the notes. The second staff, labeled 'Drums', uses a hi-hat and contains a steady eighth-note pattern. The third staff, labeled 'Staff-3', is in treble clef and contains a melodic line with eighth notes and rests. The fourth staff, labeled 'Staff-2', is in bass clef and contains a simple bass line with quarter notes. The fifth staff, labeled 'Staff-1', is in treble clef and contains a melodic line with eighth notes and rests. The sixth staff, labeled 'Staff-4', is in treble clef and contains a chordal accompaniment with sustained notes. The key signature has one flat (B-flat) and the time signature is 7/8.

96

Drums-2

Drums

Staff-3

Staff-2

Staff-1

Staff-4

Detailed description: This block contains the musical notation for measures 96 and 97. It features five staves. The top two staves are for drums: 'Drums-2' and 'Drums'. 'Drums-2' has a treble clef and a 7/8 time signature, with notes and rests. 'Drums' has a bass clef and a 7/8 time signature, with a continuous eighth-note pattern. The next three staves are for melodic instruments: 'Staff-3' (treble clef, 7/8 time), 'Staff-2' (bass clef, 7/8 time), and 'Staff-4' (treble clef, 7/8 time). All three have notes and rests. 'Staff-1' is empty.

98

Drums-2

Drums

Staff-3

Staff-1

Staff-4

Detailed description: This block contains the musical notation for measures 98 and 99. It features five staves. The top two staves are for drums: 'Drums-2' and 'Drums'. 'Drums-2' has a treble clef and a 7/8 time signature, with notes and rests. 'Drums' has a bass clef and a 7/8 time signature, with a continuous eighth-note pattern. The next three staves are for melodic instruments: 'Staff-3' (treble clef, 7/8 time), 'Staff-1' (treble clef, 7/8 time), and 'Staff-4' (treble clef, 7/8 time). 'Staff-3' and 'Staff-1' are empty. 'Staff-4' has notes and rests.

100

Drums-2

Drums

Staff-4

102

Drums-2

Drums

Staff-4

104

Drums-2

Drums

Staff-4

106

Drums-2

Drums

Staff-4

108

Drums-2

Drums

Staff-4

Detailed description of the musical score: The score consists of three staves. The top staff, labeled 'Drums-2', is in 7/8 time and features a complex rhythmic pattern of eighth and sixteenth notes with accents (marked with 'x'). The middle staff, labeled 'Drums', shows a steady eighth-note pattern. The bottom staff, labeled 'Staff-4', is in 7/8 time and contains a melodic line with a key signature of one flat. The page number '108' is at the top left, and '23' is at the top right.

98 Degrees - The Hardest Thing

Drums-2

♩ = 100,000000

2



6



10



14



18



22



26



30



34



38



Copyright © <Year> by <Name> All Rights Reserved

V.S.

42



46



50



54



58



62



66



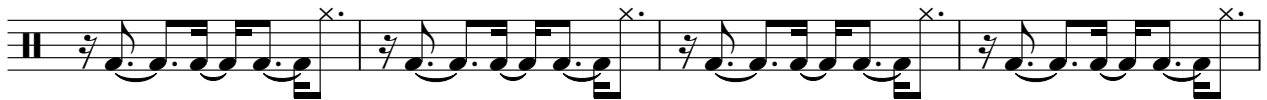
70



74



78



82



86



90



94



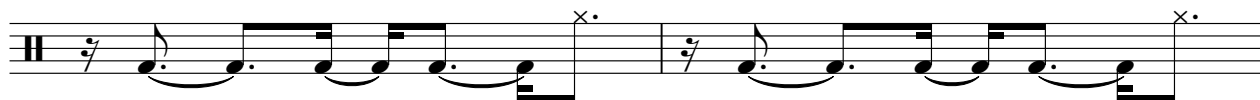
98



102



106



108



Drums

98 Degrees - The Hardest Thing

♩ = 100,000000

2

5

7

9

11

13

15

17

19

21

43



45



47



49



51



53



55



57



59



61



V.S.

63



Musical notation for drum part 63, consisting of a single staff with a double bar line on the left and a bar line on the right. The notation features a sequence of eighth notes with stems pointing up, grouped in pairs by beams. Each pair is connected to the next by a slur. The notes are positioned on the first and second lines of the staff.

65



Musical notation for drum part 65, consisting of a single staff with a double bar line on the left and a bar line on the right. The notation features a sequence of eighth notes with stems pointing up, grouped in pairs by beams. Each pair is connected to the next by a slur. The notes are positioned on the first and second lines of the staff.

67



Musical notation for drum part 67, consisting of a single staff with a double bar line on the left and a bar line on the right. The notation features a sequence of eighth notes with stems pointing up, grouped in pairs by beams. Each pair is connected to the next by a slur. The notes are positioned on the first and second lines of the staff.

69



Musical notation for drum part 69, consisting of a single staff with a double bar line on the left and a bar line on the right. The notation features a sequence of eighth notes with stems pointing up, grouped in pairs by beams. Each pair is connected to the next by a slur. The notes are positioned on the first and second lines of the staff.

71



Musical notation for drum part 71, consisting of a single staff with a double bar line on the left and a bar line on the right. The notation features a sequence of eighth notes with stems pointing up, grouped in pairs by beams. Each pair is connected to the next by a slur. The notes are positioned on the first and second lines of the staff.

73



Musical notation for drum part 73, consisting of a single staff with a double bar line on the left and a bar line on the right. The notation features a sequence of eighth notes with stems pointing up, grouped in pairs by beams. Each pair is connected to the next by a slur. The notes are positioned on the first and second lines of the staff.

75



Musical notation for drum part 75, consisting of a single staff with a double bar line on the left and a bar line on the right. The notation features a sequence of eighth notes with stems pointing up, grouped in pairs by beams. Each pair is connected to the next by a slur. The notes are positioned on the first and second lines of the staff.

77



Musical notation for drum part 77, consisting of a single staff with a double bar line on the left and a bar line on the right. The notation features a sequence of eighth notes with stems pointing up, grouped in pairs by beams. Each pair is connected to the next by a slur. The notes are positioned on the first and second lines of the staff.

79



Musical notation for drum part 79, consisting of a single staff with a double bar line on the left and a bar line on the right. The notation features a sequence of eighth notes with stems pointing up, grouped in pairs by beams. Each pair is connected to the next by a slur. The notes are positioned on the first and second lines of the staff.

81



Musical notation for drum part 81, consisting of a single staff with a double bar line on the left and a bar line on the right. The notation features a sequence of eighth notes with stems pointing up, grouped in pairs by beams. Each pair is connected to the next by a slur. The notes are positioned on the first and second lines of the staff.

83



85



87



89



91



93



95



97



99



101



V.S.

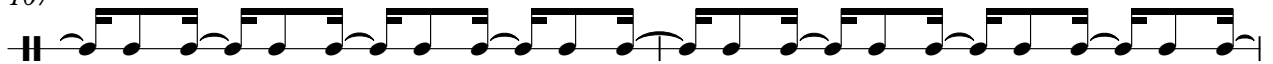
103



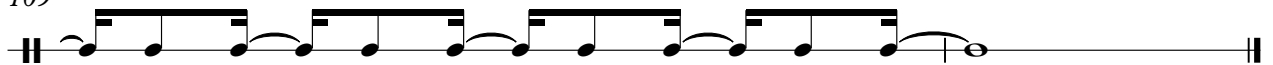
105



107



109



98 Degrees - The Hardest Thing

Staff-2

♩ = 100,000000



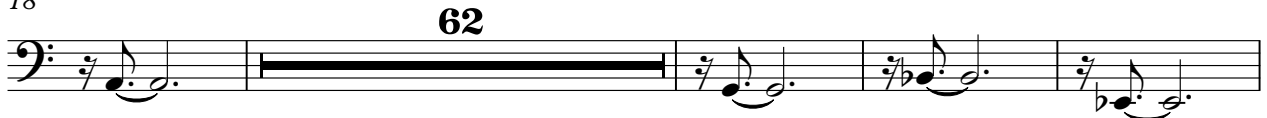
6



12



18



84



89



94



Copyright © <Year> by <Name> All Rights Reserved

98 Degrees - The Hardest Thing

Staff-1

♩ = 100,000000

18

22

25

28

31

34

37

40

43

46

Copyright © <Year> by <Name> All Rights Reserved

V.S.

49



52



55



58



61



64



67



71



77



80



83



86



89



92

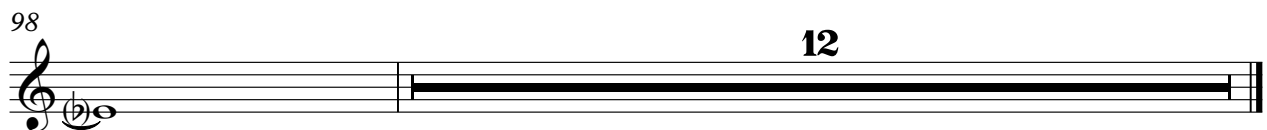


96



98

12



98 Degrees - The Hardest Thing

Staff-4

♩ = 100,000000

2

8

14

20

27

34

44

50

57

61

Copyright © <Year> by <Name> All Rights Reserved

69



75



82



87



97



103



107

