

Jazz Gitaar Trio`s StandardsDiversen - Have You Met M

$\text{♩} = 137,001938$

JAZZ GTR

4

JAZZ GTR

6

JAZZ GTR

8

JAZZ GTR

9

JAZZ GTR

11

JAZZ GTR

13

JAZZ GTR

15

JAZZ GTR

17

DRUMS

JAZZ GTR

ACOU BASS

19

DRUMS

JAZZ GTR

ACOU BASS

21

DRUMS

JAZZ GTR

ACOU BASS

3

23

DRUMS

JAZZ GTR

ACOU BASS

25

DRUMS

JAZZ GTR

ACOU BASS

27

DRUMS

JAZZ GTR

ACOU BASS

28

DRUMS

JAZZ GTR

ACOU BASS

30

DRUMS

JAZZ GTR

ACOU BASS

32

DRUMS

JAZZ GTR

ACOU BASS

34

DRUMS

JAZZ GTR

ACOU BASS

36

DRUMS

JAZZ GTR

ACOU BASS

38

DRUMS

JAZZ GTR

ACOU BASS

40

DRUMS

JAZZ GTR

ACOU BASS

41

42

DRUMS

JAZZ GTR

ACOU BASS

43

44

DRUMS

JAZZ GTR

ACOU BASS

45

46

DRUMS

JAZZ GTR

ACOU BASS

47

47

DRUMS

JAZZ GTR

ACOU BASS

This system covers measures 47 and 48. The drum part features a consistent snare and cymbal pattern. The jazz guitar part consists of arpeggiated chords and eighth-note runs. The acoustic bass part provides a steady accompaniment with quarter and eighth notes.

49

DRUMS

JAZZ GTR

ACOU BASS

3

This system covers measures 49 and 50. The drum part continues with the snare and cymbal pattern. The jazz guitar part includes arpeggiated chords and eighth-note runs. The acoustic bass part features quarter and eighth notes, with a triplet of eighth notes in measure 50.

51

DRUMS

JAZZ GTR

ACOU BASS

This system covers measures 51 and 52. The drum part maintains the snare and cymbal pattern. The jazz guitar part has arpeggiated chords and eighth-note runs. The acoustic bass part plays quarter and eighth notes.

53

DRUMS

JAZZ GTR

ACOU BASS

3

This system covers measures 53 and 54. The drum part continues with the snare and cymbal pattern. The jazz guitar part includes arpeggiated chords and eighth-note runs. The acoustic bass part features quarter and eighth notes, with a triplet of eighth notes in measure 54.

55

DRUMS

JAZZ GTR

ACOU BASS

56

DRUMS

JAZZ GTR

ACOU BASS

58

DRUMS

JAZZ GTR

ACOU BASS

60

DRUMS

JAZZ GTR

ACOU BASS

62

DRUMS

JAZZ GTR

ACOU BASS

Measures 62-63. Drums: Snare and hi-hat patterns. Jazz Guitar: Complex chordal and melodic lines. Acoustic Bass: Simple bass line.

64

DRUMS

JAZZ GTR

ACOU BASS

Measures 64-65. Drums: Snare and hi-hat patterns. Jazz Guitar: Complex chordal and melodic lines, including a triplet. Acoustic Bass: Simple bass line.

66

DRUMS

JAZZ GTR

ACOU BASS

Measures 66-67. Drums: Snare and hi-hat patterns. Jazz Guitar: Complex chordal and melodic lines. Acoustic Bass: Simple bass line.

68

DRUMS

JAZZ GTR

ACOU BASS

Measures 68-69. Drums: Snare and hi-hat patterns. Jazz Guitar: Complex chordal and melodic lines. Acoustic Bass: Simple bass line.

70

DRUMS

JAZZ GTR

ACOU BASS

This system covers measures 70 and 71. The drum part features a consistent snare and hi-hat pattern. The jazz guitar part is highly active with complex chordal textures and melodic runs. The acoustic bass provides a steady harmonic foundation.

72

DRUMS

JAZZ GTR

ACOU BASS

This system covers measures 72 and 73. The drum part continues with the established snare and hi-hat pattern. The jazz guitar part maintains its complex texture with various chord voicings and melodic phrases. The acoustic bass continues its harmonic support.

74

DRUMS

JAZZ GTR

ACOU BASS

This system covers measures 74 and 75. The drum part features the same snare and hi-hat pattern. The jazz guitar part shows further development of its complex textures. The acoustic bass continues to provide a steady harmonic accompaniment.

76

DRUMS

JAZZ GTR

ACOU BASS

This system covers measures 76 and 77. The drum part maintains the snare and hi-hat pattern. The jazz guitar part continues with its intricate textures. The acoustic bass provides the harmonic base for the ensemble.

78

DRUMS

JAZZ GTR

ACOU BASS

80

DRUMS

JAZZ GTR

ACOU BASS

82

DRUMS

JAZZ GTR

ACOU BASS

84

DRUMS

JAZZ GTR

ACOU BASS

86

DRUMS

JAZZ GTR

ACOU BASS

87

88

DRUMS

JAZZ GTR

ACOU BASS

89

90

DRUMS

JAZZ GTR

ACOU BASS

91

92

DRUMS

JAZZ GTR

ACOU BASS

93

94

DRUMS

JAZZ GTR

ACOU BASS

This system covers measures 94 and 95. The drums feature a consistent snare and hi-hat pattern. The jazz guitar part consists of chords and melodic lines, with a triplet of eighth notes in measure 95. The acoustic bass line provides a steady accompaniment with a triplet of eighth notes in measure 95.

96

DRUMS

JAZZ GTR

ACOU BASS

This system covers measures 96 and 97. The drums continue with the snare and hi-hat pattern. The jazz guitar part features chords and melodic lines, with a triplet of eighth notes in measure 97. The acoustic bass line maintains the accompaniment with a triplet of eighth notes in measure 97.

98

DRUMS

JAZZ GTR

ACOU BASS

This system covers measures 98 and 99. The drums continue with the snare and hi-hat pattern. The jazz guitar part features chords and melodic lines, with a triplet of eighth notes in measure 99. The acoustic bass line maintains the accompaniment with a triplet of eighth notes in measure 99.

100

DRUMS

JAZZ GTR

ACOU BASS

This system covers measures 100 and 101. The drums continue with the snare and hi-hat pattern. The jazz guitar part features chords and melodic lines, with a triplet of eighth notes in measure 101. The acoustic bass line maintains the accompaniment with a triplet of eighth notes in measure 101.

101

DRUMS

3

JAZZ GTR

ACOU BASS

DRUMS

Jazz Gitaar Trio`s StandardsDiversen - Have You Met M

♩ = 137,001938

17

21

25

29

33

37

41

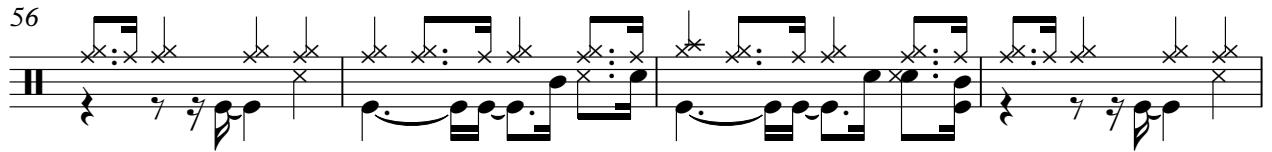
45

49

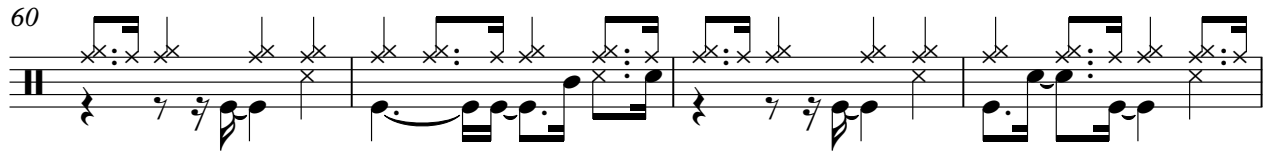
52

V.S.

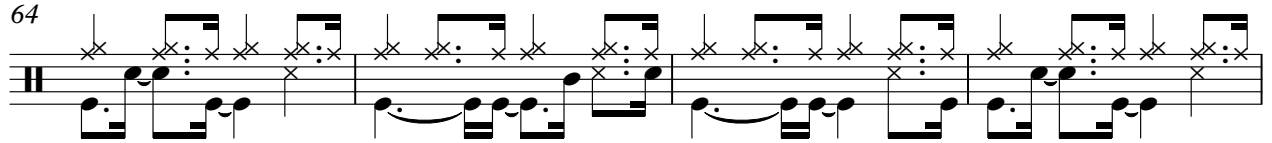
56



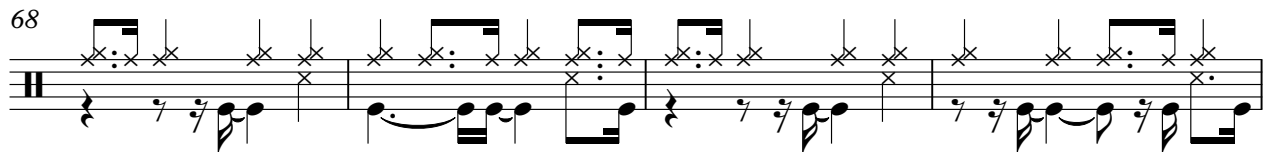
60



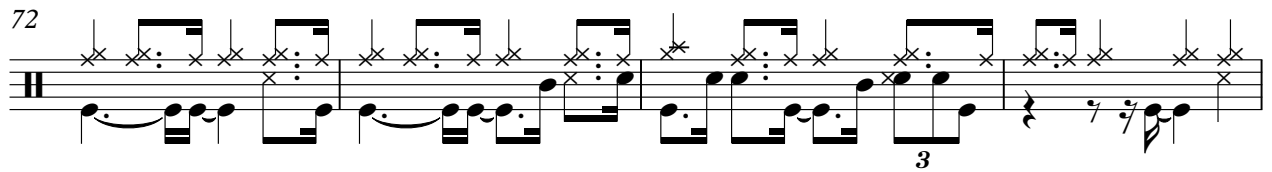
64



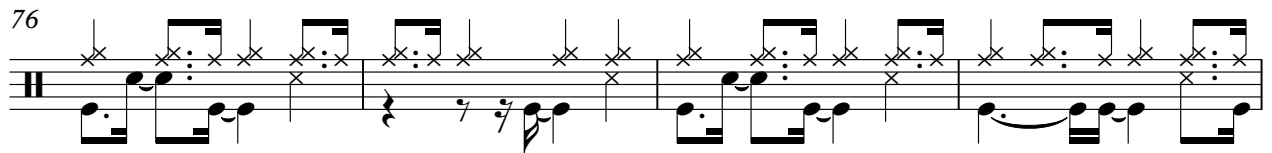
68



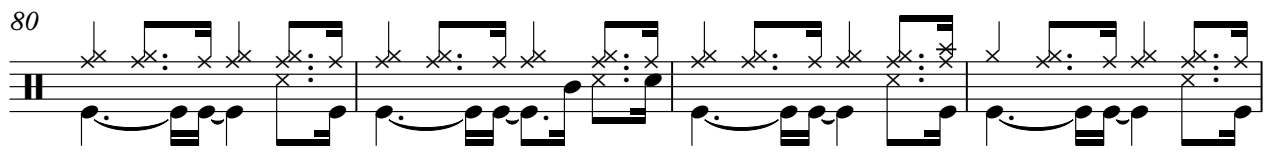
72



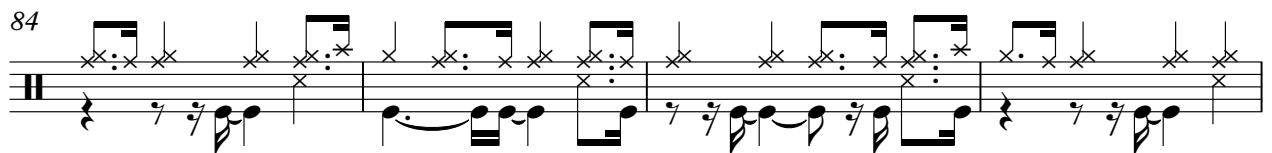
76



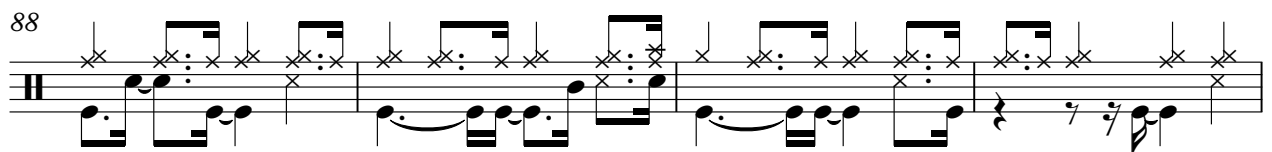
80



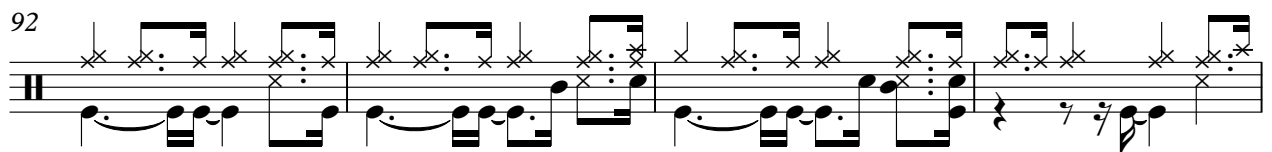
84



88



92



DRUMS

3

96

Musical notation for drums, measures 96-99. The notation consists of two staves. The top staff uses 'x' marks to indicate drum hits, with vertical stems and flags. The bottom staff uses standard musical notation with eighth and sixteenth notes, including beams and slurs, to represent the drum patterns.

100

Musical notation for drums, measures 100-102. The notation consists of two staves. The top staff features a triplet of eighth notes marked with a '3' and a bracket. The bottom staff shows the corresponding drum notation with slurs and beams. Measure 102 is a full rest, indicated by a thick black bar on the staff.

♩ = 137,001938

4

6

8

10

12

14

16

19

21

V.S.

JAZZ GTR

23

25

28

31

33

35

38

41

43

45

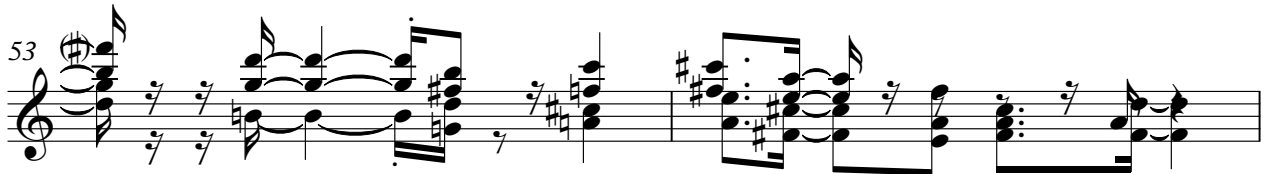
47



50



53



55



57



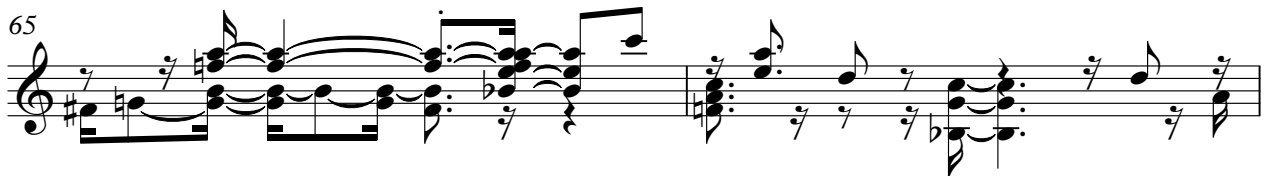
60



63



65



67



69



V.S.

71

73

75

77

80

83

86

89

91

93

JAZZ GTR

96 5

Musical notation for measures 96 and 97. Measure 96 features a complex chordal texture with multiple notes per string, including a trill on the first string. Measure 97 continues with similar chordal patterns and includes a sharp sign (#) on the staff.

98

Musical notation for measures 98 and 99. Measure 98 contains a triplet of eighth notes on the first string, indicated by a bracket and the number '3'. Measure 99 features a melodic line with a sharp sign (#) on the staff.

100

Musical notation for measures 100 and 101. Measure 100 shows a melodic line with a sharp sign (#) on the staff. Measure 101 features a melodic line with a sharp sign (#) on the staff and a final chord.

101

Musical notation for measures 101 and 102. Measure 101 features a melodic line with a sharp sign (#) on the staff. Measure 102 consists of a final chord and a whole rest on the staff.

♩ = 137,001938

16

21

26

31

36

41

46

51

56

61

V.S.

67



72



77



82



86



90



95



99



101

