

ABBA - Tiger

♩ = 131,499939

Drums

Guitar

Bass



5

Drums

Guitar

Bass



8

♩ = 134,000061

Melody

Drums

Guitar

Bass

11

Melody

Drums

Guitar

Bass



14

Melody

Drums

Guitar

Bass

Choir

17

Melody

Drums

Guitar

Bass

Choir



19

Melody

Drums

Guitar

Bass

Choir

21

Melody

Drums

Guitar

Bass

Choir



23

Melody

Drums

Guitar

Bass

26

Melody

Drums

Guitar

Bass



29

Melody

Drums

Guitar

Bass

Choir

32

Melody

Drums

Guitar

Bass

Choir



34

Melody

Drums

Guitar

Bass

Choir

36

Melody

Drums

Guitar

Bass

Choir



38

Melody

Drums

Piano

Guitar

Bass

41

Melody

Drums

Piano

Guitar

Square

45

Melody

Drums

Piano

Guitar

Bass

Choir

48

Melody

Drums

Guitar

Bass

Choir



50

Melody

Drums

Guitar

Bass

Choir

52

Melody

Drums

Guitar

Bass

Choir



54

Melody

Drums

Guitar

Bass

57

Melody

Drums

Guitar

Bass



60

Melody

Drums

Guitar

Bass

Choir

63

Melody

Drums

Guitar

Bass

Choir



65

Melody

Drums

Guitar

Bass

Choir

67

Melody

Drums

Guitar

Bass

Choir



69

Melody

Drums

Piano

Guitar

Bass

72

Melody

Drums

Piano

Guitar

Square

76

Melody

Drums

Piano

Guitar

Bass

Choir

79

Melody

Drums

Guitar

Bass

Choir



81

Melody

Drums

Guitar

Bass

Choir

83

Melody

Drums

Guitar

Bass

Choir



85

Melody

Drums

Guitar

Bass

Choir

87

Melody

Drums

Guitar

Bass

Choir



89

Melody

Drums

Guitar

Bass

Choir

91

Melody

Drums

Guitar

Bass

Choir



93

Melody

Drums

Guitar

Bass



95

Melody

Guitar

ABBA - Tiger

Melody

♩ = 131,499939 ♩ = 134,000061

7

11

15

20

25

29

34

39

44

49

V.S.

Drums

ABBA - Tiger

♩ = 131,499939

4

5

8

♩ = 134,000061

12

17

20

23

27

32

35

V.S.

2

Drums

38

Musical notation for drums, measures 38-45. Measure 38 has a double bar line and a '2' above it. Measure 45 has a double bar line and a '2' above it.

46

Musical notation for drums, measures 46-48.

49

Musical notation for drums, measures 49-51.

52

Musical notation for drums, measures 52-54.

55

Musical notation for drums, measures 55-59.

60

Musical notation for drums, measures 60-63.

64

Musical notation for drums, measures 64-66.

67

Musical notation for drums, measures 67-70.

71

Musical notation for drums, measures 71-76. Measure 71 has a double bar line and a '2' above it. Measure 76 has a double bar line and a '2' above it.

78

Musical notation for drums, measures 78-82.

81



84



87



90



93



Guitar

ABBA - Tiger

♩ = 131,499939

7

♩ = 134,000061

11

15

19

23

27

31

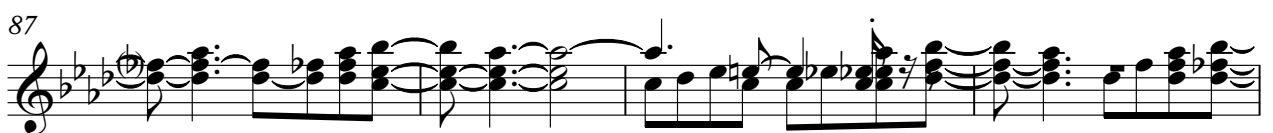
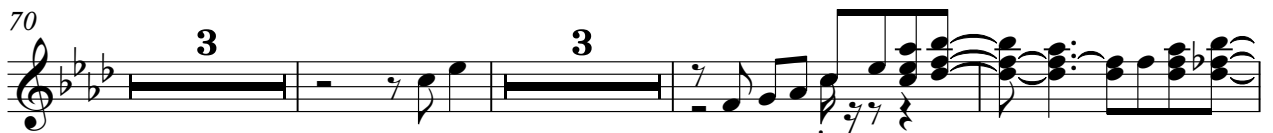
35

38

3

3

Detailed description: This is a guitar score for the song 'Tiger' by ABBA. It is written in a 4/4 time signature with a key signature of three flats (B-flat major or D-flat minor). The score is divided into ten systems of music. The first system starts with a tempo marking of ♩ = 131,499939. The second system has a tempo marking of ♩ = 134,000061. The systems are numbered 7, 11, 15, 19, 23, 27, 31, 35, and 38. The music features a mix of chords, arpeggios, and melodic lines. The final system (38) includes two triplet markings over the notes.



Guitar

3

91

Musical notation for guitar, measures 91-93. The notation is written on a single staff in treble clef with a key signature of three flats (B-flat, E-flat, A-flat). Measure 91 begins with a double bar line and a repeat sign, followed by a series of chords and eighth notes. Measure 92 continues with similar rhythmic patterns. Measure 93 concludes with a final chord and a double bar line.

94

Musical notation for guitar, measures 94-96. The notation is written on a single staff in treble clef with a key signature of three flats. Measure 94 features a series of eighth notes and chords. Measure 95 contains a long, sustained chord. Measure 96 ends with a final chord and a double bar line.

Bass

ABBA - Tiger

♩ = 131,499939

2

Measures 1-7 of the bass line. Measure 1 contains a whole rest. Measures 2-7 consist of eighth notes: G2, A2, B2, C3, D3, E3, F3, G3, A3, B3, C4, D4, E4, F4, G4, A4, B4, C5.

8

♩ = 134,000061

Measures 8-13 of the bass line. Measures 8-13 consist of eighth notes: G2, A2, B2, C3, D3, E3, F3, G3, A3, B3, C4, D4, E4, F4, G4, A4, B4, C5.

14

Measures 14-19 of the bass line. Measure 14: G2, A2, B2, C3. Measure 15: whole rest, D3. Measures 16-19: eighth notes: D3, E3, F3, G3, A3, B3, C4, D4, E4, F4, G4, A4, B4, C5.

20

Measures 20-25 of the bass line. Measures 20-25 consist of eighth notes: G2, A2, B2, C3, D3, E3, F3, G3, A3, B3, C4, D4, E4, F4, G4, A4, B4, C5.

26

Measures 26-31 of the bass line. Measures 26-31 consist of eighth notes: G2, A2, B2, C3, D3, E3, F3, G3, A3, B3, C4, D4, E4, F4, G4, A4, B4, C5.

32

Measures 32-35 of the bass line. Measures 32-35 consist of eighth notes: G2, A2, B2, C3, D3, E3, F3, G3, A3, B3, C4, D4, E4, F4, G4, A4, B4, C5.

36

7

Measures 36-42 of the bass line. Measures 36-42 consist of eighth notes: G2, A2, B2, C3, D3, E3, F3, G3, A3, B3, C4, D4, E4, F4, G4, A4, B4, C5. Measure 42 contains a whole rest.

ABBA - Tiger

Choir

♩ = 131,499939 ♩ = 134,000061

8 7 2

22

9 2 10

47

2 9

64

2 10 2

82

2

88

2 6

Square

ABBA - Tiger

♪ = 131,499939 ♪ = 134,000061

8 **33**

43

30 **24**