

# Aerosmith - What It Takes

♩ = 69,999985

Staff-1

Staff-5

Staff-4

Staff-2

Staff-3

4

Staff-1

Staff-5

Staff-4

Staff-2

Staff-3

7

Staff-1

Staff-5

Staff-4

Staff-2

Staff-3

10

Staff-1

Staff-5

Staff-4

Staff-2

Staff-3

13

Staff-1: Treble clef, key signature of one sharp (F#). Measure 13 starts with a quarter rest, followed by a quarter note G4, a half note A4, and a quarter note B4. Measure 14 contains a sixteenth-note triplet of G4, A4, B4, followed by a quarter note C5, a quarter note B4, and a quarter note A4. Measure 15 contains a quarter note G4, a quarter note F#4, and a quarter note E4.

Staff-5: Treble clef, key signature of one sharp. Measure 13 contains a whole chord of G4, A4, B4, C5. Measure 14 contains a whole chord of G4, A4, B4, C5, D5, E5, F#5, G5. Measure 15 contains a whole chord of G4, A4, B4, C5, D5, E5, F#5, G5.

Staff-4: Bass clef, key signature of one sharp. Measure 13 contains a quarter note G2, a quarter note A2, and a quarter note B2. Measure 14 contains a quarter note C3, a quarter note D3, and a quarter note E3. Measure 15 contains a quarter note F#3, a quarter note G3, and a quarter note A3.

Staff-2: Treble clef, key signature of one sharp. Measure 13 starts with a quarter rest, followed by a quarter note G4, a half note A4, and a quarter note B4. Measure 14 contains a sixteenth-note triplet of G4, A4, B4, followed by a quarter note C5, a quarter note B4, and a quarter note A4. Measure 15 contains a quarter note G4, a quarter note F#4, and a quarter note E4.

Staff-3: Treble clef, key signature of one sharp. Measure 13 contains a whole chord of G2, A2, B2, C3. Measure 14 contains a whole chord of G2, A2, B2, C3, D3, E3. Measure 15 contains a whole chord of G2, A2, B2, C3, D3, E3.

16

Staff-1: Treble clef, key signature of one sharp. Measure 16 contains a sixteenth-note triplet of G4, A4, B4, followed by a quarter note C5, a quarter note B4, and a quarter note A4. Measure 17 contains a sixteenth-note triplet of G4, A4, B4, followed by a quarter note C5, a quarter note B4, and a quarter note A4. Measure 18 contains a quarter rest, a quarter note G4, and a quarter note F#4.

Staff-5: Treble clef, key signature of one sharp. Measure 16 contains a whole chord of G4, A4, B4, C5. Measure 17 contains a whole chord of G4, A4, B4, C5, D5, E5, F#5, G5. Measure 18 contains a whole chord of G4, A4, B4, C5, D5, E5, F#5, G5.

Staff-4: Bass clef, key signature of one sharp. Measure 16 contains a quarter note G2, a quarter note A2, and a quarter note B2. Measure 17 contains a quarter note C3, a quarter note D3, and a quarter note E3. Measure 18 contains a quarter note F#3, a quarter note G3, and a quarter note A3.

Staff-2: Treble clef, key signature of one sharp. Measure 16 contains a sixteenth-note triplet of G4, A4, B4, followed by a quarter note C5, a quarter note B4, and a quarter note A4. Measure 17 contains a sixteenth-note triplet of G4, A4, B4, followed by a quarter note C5, a quarter note B4, and a quarter note A4. Measure 18 contains a quarter rest, a quarter note G4, and a quarter note F#4.

Staff-3: Treble clef, key signature of one sharp. Measure 16 contains a whole chord of G2, A2, B2, C3. Measure 17 contains a whole chord of G2, A2, B2, C3, D3, E3. Measure 18 contains a whole chord of G2, A2, B2, C3, D3, E3.

19

Staff-1: Treble clef, melodic line with eighth notes and slurs.

Staff-5: Treble clef, chordal accompaniment with slurs and accidentals.

Staff-4: Bass clef, melodic line with eighth notes and slurs.

Staff-2: Treble clef, melodic line with eighth notes and slurs.

Staff-3: Treble clef, chordal accompaniment with slurs and accidentals.

22

Staff-1: Treble clef, melodic line with triplets and sextuplets, ending with a fermata.

Staff-5: Treble clef, chordal accompaniment with slurs and accidentals.

Staff-4: Bass clef, melodic line with slurs and accidentals.

Staff-2: Treble clef, melodic line with triplets and sextuplets, ending with a fermata.

Staff-3: Treble clef, chordal accompaniment with slurs and accidentals.

25

Staff-1

Staff-5

Staff-4

Staff-2

Staff-3

Detailed description: This system of music covers measures 25, 26, and 27. Staff-1 (treble clef) features a melodic line with eighth-note runs and a half note. Staff-5 (treble clef) contains sustained chords with a fermata. Staff-4 (bass clef) has a bass line with eighth notes and a half note. Staff-2 (treble clef) mirrors the eighth-note patterns of Staff-1. Staff-3 (treble clef) provides harmonic support with chords and a whole note.

28

Staff-1

Staff-5

Staff-4

Staff-2

Staff-3

Detailed description: This system of music covers measures 28, 29, and 30. Staff-1 (treble clef) continues the melodic line with eighth notes and a quarter note. Staff-5 (treble clef) shows complex chordal textures with a fermata. Staff-4 (bass clef) has a bass line with eighth notes and a half note. Staff-2 (treble clef) mirrors the eighth-note patterns of Staff-1. Staff-3 (treble clef) provides harmonic support with chords and a quarter note.

31

Staff-1: Treble clef, melodic line with eighth notes and slurs.

Staff-5: Treble clef, accompaniment with chords and slurs.

Staff-4: Bass clef, accompaniment with eighth notes and slurs.

Staff-2: Treble clef, melodic line with eighth notes and slurs.

Staff-3: Treble clef, accompaniment with chords.

33

Staff-1: Treble clef, melodic line with eighth notes and slurs.

Staff-5: Treble clef, accompaniment with chords and slurs.

Staff-4: Bass clef, accompaniment with eighth notes and slurs.

Staff-2: Treble clef, melodic line with eighth notes and slurs.

Staff-3: Treble clef, accompaniment with chords.

36

Staff-1

Staff-5

Staff-4

Staff-2

Staff-3

Detailed description: This system contains measures 36, 37, and 38. Staff 1 (treble clef) starts with a whole rest, followed by eighth-note runs in measures 37 and 38. Staff 5 (treble clef) features a series of chords, including a complex one with multiple beamed notes. Staff 4 (bass clef) has a melodic line with eighth notes and slurs. Staff 2 (treble clef) plays a rhythmic accompaniment of eighth-note chords. Staff 3 (treble clef) has a simple bass line with whole notes.

39

Staff-1

Staff-5

Staff-4

Staff-2

Staff-3

Detailed description: This system contains measures 39, 40, and 41. Staff 1 (treble clef) features eighth-note runs with triplets and sixteenth-note groups. Staff 5 (treble clef) has chords with slurs and a final complex chord. Staff 4 (bass clef) has a melodic line with eighth notes and a final whole note. Staff 2 (treble clef) has a rhythmic accompaniment similar to the previous system. Staff 3 (treble clef) has a bass line with chords and a final complex chord.

The image displays a musical score for guitar, organized into five staves labeled Staff-1 through Staff-5. The score is divided into three systems of measures, with measure numbers 42, 45, and 47 marking the beginning of each system. The key signature is one flat (B-flat), and the time signature is 4/4. Staff-1 and Staff-2 feature melodic lines with sixteenth-note runs and slurs, including a sixteenth-note triplet in measure 42. Staff-3 provides harmonic accompaniment with chords and single notes. Staff-4 and Staff-5 contain complex chordal textures, including triads and dyads, often with slurs and ties. The notation includes various musical symbols such as accidentals, slurs, ties, and dynamic markings like 'f'.



49 9

Staff-5

Staff-4

Staff-2

Staff-3

Detailed description: This system covers measures 49 and 50. Staff 5 (treble clef) features a series of chords in the first four measures, followed by a melodic line in the fifth measure, and another chord in the sixth measure. Staff 4 (bass clef) has a bass line with a long note in the first measure and a series of eighth notes in the second measure. Staff 2 (treble clef) has a melodic line with eighth notes in the first measure and a series of eighth notes in the second measure. Staff 3 (treble clef) has a single note in the first measure and a single note in the second measure.

51

Staff-1

Staff-5

Staff-4

Staff-2

Staff-3

Detailed description: This system covers measures 51 and 52. Staff 1 (treble clef) has a melodic line with eighth notes in the first measure and a melodic line with eighth notes in the second measure. Staff 5 (treble clef) has a series of chords in the first four measures, followed by a melodic line in the fifth measure, and another chord in the sixth measure. Staff 4 (bass clef) has a bass line with a long note in the first measure and a series of eighth notes in the second measure. Staff 2 (treble clef) has a melodic line with eighth notes in the first measure and a melodic line with eighth notes in the second measure. Staff 3 (treble clef) has a single note in the first measure and a single note in the second measure.

53

Staff-1

Staff-5

Staff-4

Staff-2

Staff-3

56

Staff-1

Staff-5

Staff-4

Staff-2

Staff-3

58

Staff-1

Staff-5

Staff-4

Staff-2

Staff-3

61

Staff-1

Staff-5

Staff-4

Staff-2

Staff-3

64

Staff-1: Treble clef, 2/4 time signature. Measures 64-66. Contains a melodic line with triplets of eighth notes and sixteenth notes. Fingering numbers 3 and 6 are present.

Staff-2: Treble clef, 2/4 time signature. Measures 64-66. Contains a melodic line with triplets and sixteenth notes, mirroring Staff-1.

Staff-3: Treble clef, 2/4 time signature. Measures 64-66. Contains a harmonic accompaniment with chords and a long note in measure 66.

Staff-4: Bass clef, 2/4 time signature. Measures 64-66. Contains a bass line with eighth notes and a long note in measure 66.

Staff-5: Treble clef, 2/4 time signature. Measures 64-66. Contains a harmonic accompaniment with chords and a long note in measure 66.

67

Staff-1: Treble clef, 2/4 time signature. Measures 67-69. Contains a melodic line with sixteenth notes and a change in time signature to 4/4 in measure 68.

Staff-2: Treble clef, 2/4 time signature. Measures 67-69. Contains a melodic line with sixteenth notes and a change in time signature to 4/4 in measure 68.

Staff-3: Treble clef, 2/4 time signature. Measures 67-69. Contains a harmonic accompaniment with chords and a change in time signature to 4/4 in measure 68.

Staff-4: Bass clef, 2/4 time signature. Measures 67-69. Contains a bass line with eighth notes and a change in time signature to 4/4 in measure 68.

Staff-5: Treble clef, 2/4 time signature. Measures 67-69. Contains a harmonic accompaniment with chords and a change in time signature to 4/4 in measure 68.

70

Staff-1

Staff-5

Staff-4

Staff-2

Staff-3

13

73

Staff-1

Staff-5

Staff-4

Staff-2

Staff-3

75

Staff-1

Staff-5

Staff-4

Staff-2

Staff-3

77

Staff-1

Staff-5

Staff-4

Staff-2

Staff-3

80

Staff-1

Staff-5

Staff-4

Staff-2

Staff-3

83

Staff-1

Staff-5

Staff-4

Staff-2

Staff-3

86

Staff-1

Staff-5

Staff-4

Staff-2

Staff-3

89

Staff-1

Staff-5

Staff-4

Staff-2

Staff-3



# Aerosmith - What It Takes

Staff-1

♩ = 69,999985

4

7

3

10

12

15

17

21

3

3

6

6

24

6

27

30

V.S.

33

35

39

42

52

55

58

62

65

69

72

Staff 1.

3

75

78

81

84

87

89

# Aerosmith - What It Takes

Staff-5

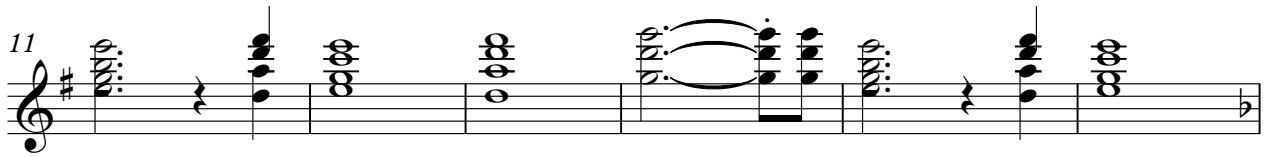
♩ = 69,999985



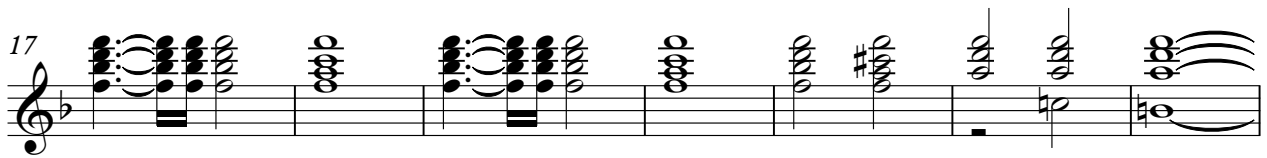
5



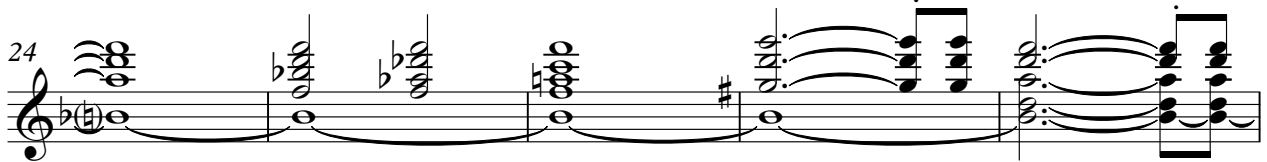
11



17



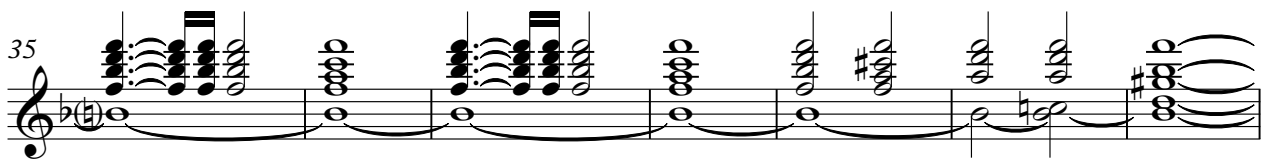
24



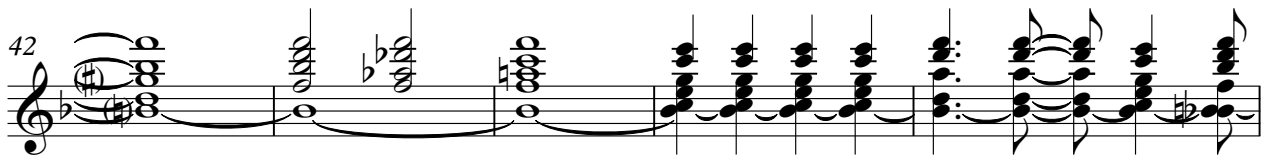
29



35



42



47



51



V.S.

2

Staff-5

57

64

71

76

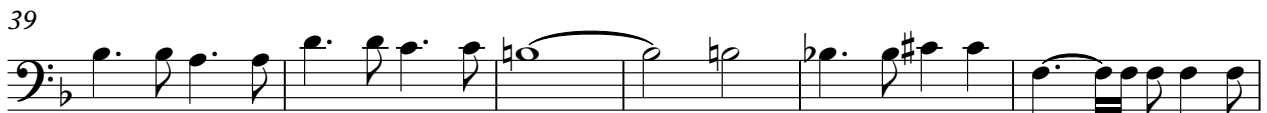
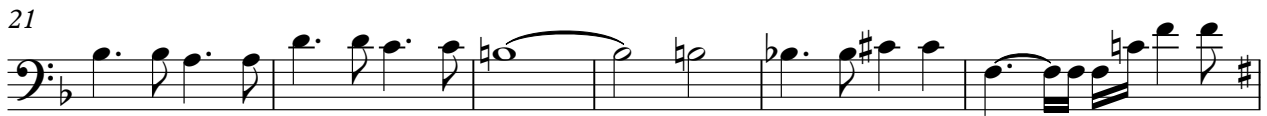
82

87

# Aerosmith - What It Takes

Staff-4

♩ = 69,999985



V.S.

45

50

54

59

63

69

74

78

82

86

89

A musical staff in bass clef with a key signature of one flat (B-flat). The staff contains a melodic line starting with a half note G2 (two ledger lines below the staff), followed by eighth notes G2, F2, E2, D2, C2, B1, A1, G1. A slur covers the first two measures. The second measure contains a half note G1. The third measure contains eighth notes G1, F1, E1, D1, C1, B0, A0. A slur covers the last two measures. The final measure contains a half note G0. The staff ends with a double bar line.



# Aerosmith - What It Takes

Staff-2

♩ = 69,999985

5

8

11

14

17

20

23

26

29

V.S.

32

35

38

41

45

48

51

54

57

60

63

3 3

66

6 6 6

71

74

77

80

83

86

89

# Aerosmith - What It Takes

Staff-3

♩ = 69,999985

2

9

17

24

29

35

42

49

57

65

V.S.

2

Staff-3

71



78



85

