

John - Sylvia's Mother (Dr Hook)

♩ = 85,000046

hats

kick

snare

piano 1
Sylvia's Mother. (Dr.Hook)

R.Gtr

LEAD

gtr 1
chris@daisydots.freemove.co.uk

bass

string pa

piano 2
Sequenced by Chris.Hankins.

strings

♩ = 85,000046

5

hats

kick

snare

R.Gtr

LEAD

gtr 1
"Sylvia's mother says" "Tell baby to come to the phone"

bass

string pa

8

hats

kick

snare

R.Gtr

LEAD

gtr 1

bass

string pa

strings

Syl v'ia's m' d'ar says

Syl v'ia's t' i' i'

To start a new life of her



11

hats

kick

snare

R.Gtr

LEAD

gtr 1

bass

string pa

strings

own

Syl v'ia's m' d'ar says

Syl v'ia's he' r'ay

So

14

hats

kick

snare

R. Gtr

LEAD

gtr 1

bass

string pa

strings

w/ don't you leave her a lone? a con sa



17

hats

kick

snare

R. Gtr

LEAD

gtr 1

bass

string pa

strings

"forty cents now for the next three minutes"

20

hats

kick

snare

R. Gtr

LEAD

gtr 1

bass

string pa

strings

as Mrs. Ave ry I just got ta talk to her. I'm on ly keep er a'



23

hats

kick

snare

R. Gtr

LEAD

gtr 1

bass

string pa

strings

while Please M rs. Ave ry I just wan na tell 'er good

26

hats

kick

snare

R. Gtr

LEAD

gtr 1

bass

string pa

strings

Syl via's mo dar says



29

hats

kick

snare

R. Gtr

LEAD

gtr 1

bass

string pa

strings

"Syl via's pack in" "She's ganna be leavin' to die"

32

hats

kick

snare

R.Gtr

LEAD

gtr 1

bass

string pa



35

hats

kick

snare

R.Gtr

LEAD

gtr 1

bass

string pa

strings

38

hats

kick

snare

R.Gtr

LEAD

gtr 1

bass

string pa

strings

make her start say in and stay a con sa



41

hats

kick

snare

R.Gtr

LEAD

gtr 1

bass

string pa

strings

"forty cents now for the next three minutes"

44

hats

kick

snare

R. Gtr

LEAD

gtr 1

bass

string pa

strings

as Mrs. Ave ry I just got ta talk to her. I'm only keep er a'



47

hats

kick

snare

R. Gtr

LEAD

gtr 1

bass

string pa

strings

while Please M rs. Ave ry I just wan na tell 'er good

50

hats

kick

snare

R. Gtr

LEAD

gtr 1

bass

string pa

strings

Syl via's mo dar says



53

hats

kick

snare

R. Gtr

LEAD

gtr 1

bass

string pa

strings

"Syl via's hug in" "She" catch in' the nig o' clock trip'

56

hats
kick
snare
R.Gtr
LEAD
gtr 1
bass
string pa

Syl v i a's m e r s a y s "T a k e y o u r a m b u l l a" b e c a u s e S a d i e i t's s t a r t i n' t o

Detailed description: This block contains the musical score for measures 56, 57, and 58. The score is arranged in a standard rock band format with eight staves. From top to bottom: hats (snare drum with cymbals), kick drum, snare drum, Rhythm Guitar (R.Gtr) with a dense chordal accompaniment, Lead Guitar (LEAD) with a melodic line, Guitar 1 (gtr 1) with a similar chordal accompaniment, Bass, and String Pad (string pa) with sustained chords. The vocal line is on the gtr 1 staff, with lyrics: "Syl v i a's m e r s a y s 'T a k e y o u r a m b u l l a' b e c a u s e S a d i e i t's s t a r t i n' t o".



59

hats
kick
snare
R.Gtr
LEAD
gtr 1
bass
string pa
strings

r a i n " S y l v i a's m e r s a y s "t h a n k y o u f o r c a l l i n' g" "A n d

Detailed description: This block contains the musical score for measures 59, 60, and 61. The arrangement continues with the same instruments as the previous block. The vocal line on the gtr 1 staff has lyrics: "r a i n ' S y l v i a's m e r s a y s 't h a n k y o u f o r c a l l i n' g' 'A n d". The string pad (string pa) and strings parts show more complex harmonic textures, including a triplet in the strings part of measure 61.

62

hats
kick
snare
R.Gtr
LEAD
gtr 1
bass
string pa
strings

si-
won't
you
call
back
a
gam-
ma
con-
sa-

Detailed description: This block contains the musical score for measures 62, 63, and 64. The score is arranged in a multi-staff format. At the top, the measure number '62' is indicated. The instruments listed on the left are hats, kick, snare, R.Gtr, LEAD, gtr 1, bass, string pa, and strings. The hats part consists of a steady eighth-note pattern. The kick and snare parts provide a simple rhythmic accompaniment. The R.Gtr part features a dense, repetitive chordal texture. The LEAD part contains the vocal melody with lyrics: 'si-won't you call back a gamma con-sa-'. The gtr 1 part has a complex, syncopated rhythm. The bass part plays a steady eighth-note line. The string parts (string pa and strings) play sustained chords.



65

hats
kick
snare
R.Gtr
LEAD
gtr 1
bass
string pa
strings

"for
cents
an-
for
the
next
three
minutes"

Detailed description: This block contains the musical score for measures 65, 66, and 67. The measure number '65' is at the top. The instrument list is the same as in the previous block. The hats part continues with the eighth-note pattern. The kick and snare parts maintain their rhythmic accompaniment. The R.Gtr part continues with the dense chordal texture. The LEAD part contains the vocal melody with lyrics: '"for cents an- for the next three minutes"'. The gtr 1 part continues with its complex rhythm. The bass part continues with its eighth-note line. The string parts (string pa and strings) play sustained chords.

68

hats

kick

snare

R. Gtr

LEAD

gtr 1

bass

string pa

strings

as Mrs. Avery I just got ta talk to her. I'm only keep'er a'



71

hats

kick

snare

R. Gtr

LEAD

gtr 1

bass

string pa

strings

while Please Mrs. Avery I just wan na tell 'er good

74

hats

kick

snare

R.Gtr

LEAD

bye Tell her good bye

gtr 1

bass

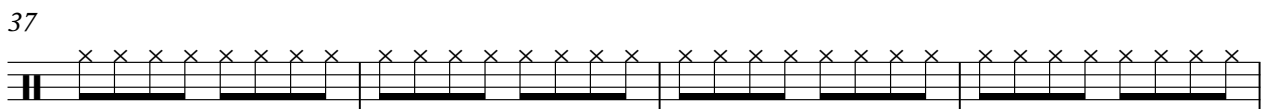
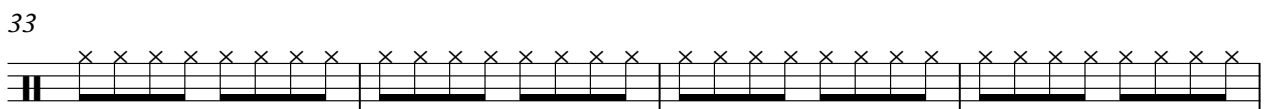
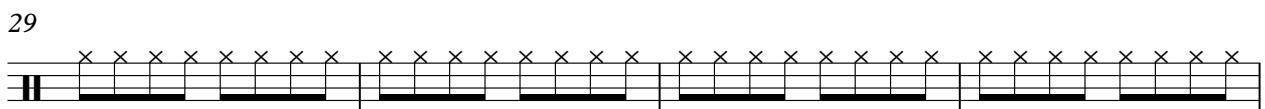
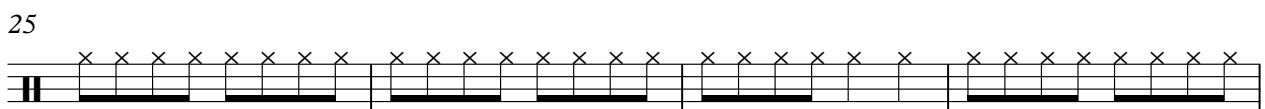
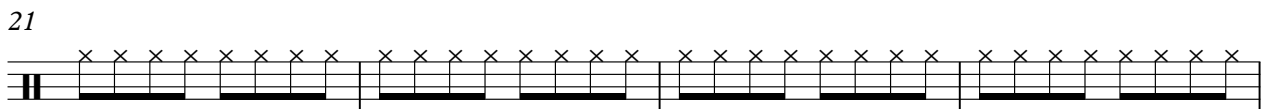
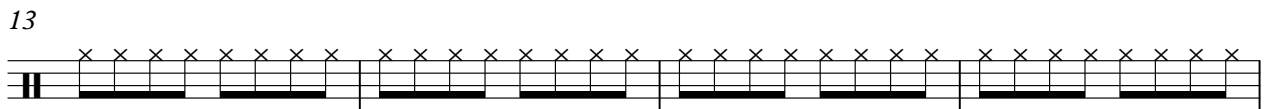
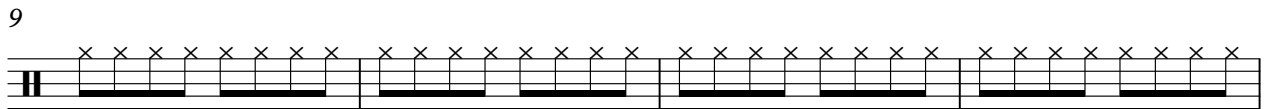
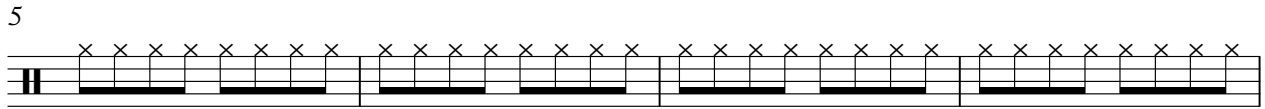
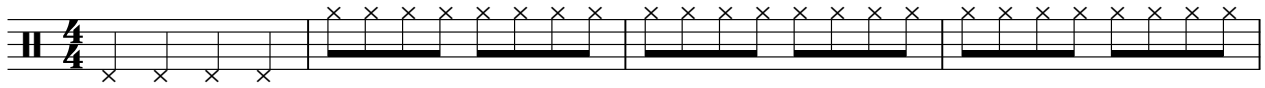
string pa

strings

John - Sylvia`s Mother (Dr Hook)

hats

♩ = 85,000046



V.S.

2

hats

41



45



49



53



57



61



65



69



73



John - Sylvia`s Mother (Dr Hook)

kick

♩ = 85,000046



7



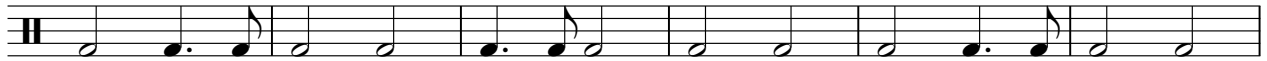
13



19



25



31



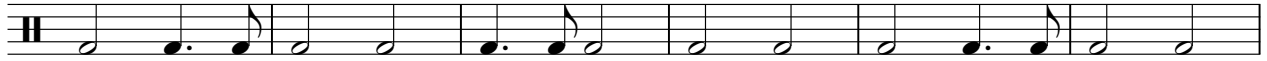
37



43



49



55



V.S.

snare

John - Sylvia`s Mother (Dr Hook)

♩ = 85,000046

4/4

7

13

19

25

31

37

43

49

55

V.S.

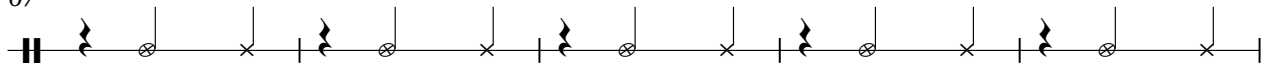
2

snare

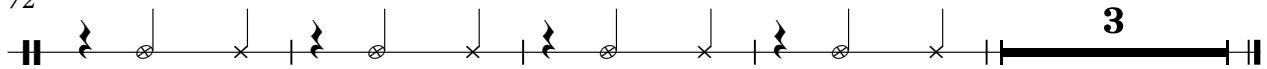
61



67



72



piano 1

John - Sylvia`s Mother (Dr Hook)

♩ = 85,000046
Sylvia's Mother. (Dr.Hook)

75

R.Gtr

John - Sylvia`s Mother (Dr Hook)

♩ = 85,000046

4

6

8

10

12

14

16

18

20

V.S.

64



66



68



70



72



74



2

LEAD

John - Sylvia`s Mother (Dr Hook)

♩ = 85,000046

Syl v ia's mo ther says "Syl v ia's bu sy" "Too

6

bu sy to come to the phone" Syl v ia's mother says "Syl v ia's try in" "To

10

start a new wife of her own" Sylv ia's mother says "Syl v ia's ha ppy" "So

14

why don't you leave her a lone?" op er a tor says

17

"forty two more for the next three minutes" Ple ase M rs. Ave ry I

21

just got ta talk to her I'll on ly keep her a while Please

24

M rs. Ave ry I just wan na tell'er good bye

28

Sylvia's mother says "Syl v ia's packin'" She's gonnabe leavin' to day"

32

Syl v ia's mother says "Syl v ia's marryin'" "A fe lla dow Gal ves ton

35

way" Syl v ia's mo ther says "Pleas don't say no thin'" "To

38

make her start cry in' and stay" op er a tor says

41

"fortyent more for the next three minutes" Ple ase M rs. Ave ry I

45

just got ta talk to her I'll on ly keep her a while Please

48

M rs. Ave ry I just wan na tell'er good bye

52

Sylvia's mother says "Syl v ia's hurryin'" She's catchin' the nine o'clock train"

56

Syl v ia's mother says "Take your um br ella" 'cause Syl vie it's start in' to

59

rain" Syl v ia's mo ther says "thank you for call in'" "And

John - Sylvia`s Mother (Dr Hook)

gtr 1

♩ = 85,000046

chris@daisydots.freemove.co.uk

The image displays a guitar tab for the song 'Sylvia's Mother' by John Dr Hook. The music is written in 4/4 time with a key signature of one sharp (F#). The tempo is indicated as 85,000046. The tab consists of ten staves, each representing a measure of music. The notation includes various chord voicings, primarily triads and dyads, with some instances of barre and bends. The first staff begins with a whole rest, followed by a series of chords. The subsequent staves continue the rhythmic and harmonic pattern, with some measures featuring a '7' symbol, likely indicating a seventh chord or a specific fingering. The tab is presented in a clean, black-and-white format on a white background.

V.S.

22

24

26

29

31

33

35

37

39

41

43

45

47

49

52

54

56

58

60

62

V.S.

64

66

68

70

72

74

John - Sylvia`s Mother (Dr Hook)

bass

♩ = 85,000046



7



13



19



25



32



38



44



50



57



V.S.

2

bass

63



69



73



John - Sylvia's Mother (Dr Hook)

string pa

♩ = 85,000046

10

19

28

37

46

55

64

71

2

piano 2

John - Sylvia`s Mother (Dr Hook)

♩ = 85,000046

Sequenced by Chris.Hankins.

75

