

♩ = 117,000114

Piccolo

Flute

GUANTANA

Percussion

Jazz Guitar

Kora

Acoustic Bass

3

Picc.

Fl.

Perc.

J. Gtr.

A. Bass

5

Picc. 

Fl. 

Perc. 

J. Gtr. 

Kora 

A. Bass 

7

Perc. 

J. Gtr. 

Kora 

A. Bass 

9

Perc. 

J. Gtr. 

Kora 

A. Bass 

11

Perc. J. Gtr. Kora A. Bass

This system contains measures 11, 12, and 13. The Percussion part features a steady eighth-note pattern with occasional 'x' marks. The J. Gtr. part is highly active with complex chordal textures and melodic lines. The Kora part has a long, sustained note in measure 11 followed by a melodic line in measure 12. The A. Bass part provides a simple harmonic foundation with a few notes.

12

Perc. J. Gtr. Kora A. Bass

This system contains measures 14, 15, and 16. The Percussion part continues with its eighth-note pattern. The J. Gtr. part shows more intricate chordal work and melodic phrasing. The Kora part has a few notes in measure 14 and a sustained note in measure 15. The A. Bass part has a rhythmic pattern with some grace notes.

14

Perc. J. Gtr. Kora A. Bass

This system contains measures 17, 18, and 19. The Percussion part maintains its eighth-note pattern. The J. Gtr. part continues with complex textures. The Kora part has a melodic line in measure 17 and a sustained note in measure 18. The A. Bass part has a few notes, including a sharp sign in measure 19.

15

Perc. J. Gtr. Kora A. Bass

This system covers measures 15, 16, and 17. The Percussion part features a steady eighth-note pattern with occasional rests. The J. Gtr. part is highly rhythmic, with complex chordal textures and frequent bends. The Kora part has a melodic line with a long sustain in measure 15. The A. Bass part provides a simple harmonic foundation with a few notes.

16

Perc. J. Gtr. Kora A. Bass

This system covers measures 18, 19, and 20. The Percussion part continues with a consistent eighth-note pattern. The J. Gtr. part shows more intricate chordal work and melodic fragments. The Kora part has a more active melodic line. The A. Bass part remains simple and supportive.

18

Perc. J. Gtr. Kora A. Bass

This system covers measures 21, 22, and 23. The Percussion part maintains the eighth-note pattern. The J. Gtr. part features a prominent melodic line with sustained notes and bends. The Kora part has a melodic line with some rests. The A. Bass part continues with its simple harmonic role.

19

Perc. J. Gtr. Kora A. Bass

This system contains measures 19 and 20. The Percussion part features a rhythmic pattern of eighth notes with 'x' marks indicating muted notes. The J. Gtr. part consists of a complex, multi-measure arpeggiated figure. The Kora part has a long, sustained note in measure 19 followed by a melodic line in measure 20. The A. Bass part provides a simple harmonic accompaniment.

20

Perc. J. Gtr. Kora A. Bass

This system contains measures 21 and 22. The Percussion part continues with a similar rhythmic pattern. The J. Gtr. part features a more intricate arpeggiated pattern with some grace notes. The Kora part has a melodic line with a sharp sign and a fermata. The A. Bass part continues with a simple harmonic accompaniment.

22

Perc. J. Gtr. Kora A. Bass

This system contains measures 23 and 24. The Percussion part continues with a similar rhythmic pattern. The J. Gtr. part features a complex arpeggiated pattern with a triplet of eighth notes. The Kora part has a melodic line with a triplet of eighth notes. The A. Bass part continues with a simple harmonic accompaniment.

24

Perc. J. Gtr. Kora A. Bass

This system contains measures 24 and 25. The Percussion part features a steady eighth-note pattern with occasional rests. The J. Gtr. part is a complex, multi-measure arpeggiated figure with a 3-measure triplet in measure 24. The Kora part has a melodic line with a 3-measure triplet in measure 24. The A. Bass part provides a simple harmonic accompaniment.

26

Perc. J. Gtr. Kora A. Bass

This system contains measures 26 and 27. The Percussion part continues with its eighth-note pattern. The J. Gtr. part continues with the arpeggiated figure, showing some chromatic movement. The Kora part continues its melodic line. The A. Bass part continues with its accompaniment.

28

Perc. J. Gtr. Kora A. Bass

This system contains measures 28 and 29. The Percussion part continues with its eighth-note pattern. The J. Gtr. part continues with the arpeggiated figure. The Kora part continues its melodic line. The A. Bass part continues with its accompaniment.

30

Perc. J. Gtr. Kora A. Bass

This system contains measures 30 and 31. The Percussion part features a steady eighth-note pattern with 'x' marks indicating muted notes. The J. Gtr. part consists of a complex, rhythmic accompaniment with many beamed notes. The Kora part has a melodic line with a triplet of eighth notes in measure 30. The A. Bass part provides a simple bass line with quarter and eighth notes.

32

Perc. J. Gtr. Kora A. Bass

This system contains measures 32 and 33. The Percussion part continues with the eighth-note pattern. The J. Gtr. part has a more intricate texture with many beamed notes and some slurs. The Kora part features a triplet of eighth notes in measure 32. The A. Bass part continues with a simple bass line.

34

Perc. J. Gtr. Kora A. Bass

This system contains measures 34 and 35. The Percussion part has a similar eighth-note pattern. The J. Gtr. part is highly rhythmic with many beamed notes. The Kora part has a melodic line with a slur over measures 34 and 35. The A. Bass part continues with a simple bass line.

36

Perc. J. Gtr. Kora A. Bass

This system covers measures 36 and 37. The Percussion part features a steady eighth-note pattern with occasional rests marked with 'x'. The J. Gtr. part consists of a complex, rhythmic chordal accompaniment with a triplet of eighth notes in measure 36. The Kora part has a simple melodic line with a few notes and a longer note in measure 37. The A. Bass part provides a simple bass line with quarter notes.

38

Perc. J. Gtr. Kora A. Bass

This system covers measures 38 and 39. The Percussion part continues with a similar eighth-note pattern. The J. Gtr. part features a more sustained, chordal texture with some notes tied across measures. The Kora part has a few notes in measure 38 and a longer note in measure 39. The A. Bass part continues with a simple bass line.

39

Perc. J. Gtr. Kora A. Bass

This system covers measures 40 and 41. The Percussion part continues with a similar eighth-note pattern. The J. Gtr. part features a more sustained, chordal texture with some notes tied across measures. The Kora part has a few notes in measure 40 and a longer note in measure 41. The A. Bass part continues with a simple bass line.



40

Perc. J. Gtr. Kora A. Bass

This system contains measures 40 and 41. The Percussion part features a steady eighth-note pattern with occasional rests marked with 'x'. The J. Gtr. part consists of complex chordal textures with many beamed notes and some grace notes. The Kora part has a simple melodic line with a few notes and rests. The A. Bass part provides a simple bass line with quarter and eighth notes.

42

Perc. J. Gtr. Kora A. Bass

This system contains measures 42 and 43. The Percussion part continues with its eighth-note pattern. The J. Gtr. part features more complex chordal textures with many beamed notes and some grace notes. The Kora part has a simple melodic line with a few notes and rests. The A. Bass part provides a simple bass line with quarter and eighth notes.

43

Perc. J. Gtr. Kora A. Bass

This system contains measures 44 and 45. The Percussion part continues with its eighth-note pattern. The J. Gtr. part features complex chordal textures with many beamed notes, grace notes, and a triplet in measure 45. The Kora part has a simple melodic line with a few notes and rests. The A. Bass part provides a simple bass line with quarter and eighth notes.

45

Perc.

J. Gtr.

Kora

A. Bass

47

Perc.

J. Gtr.

Kora

A. Bass

48

Picc.

Fl.

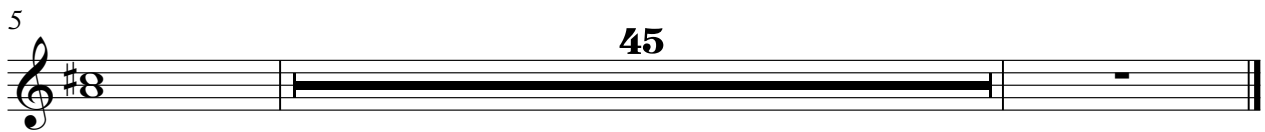
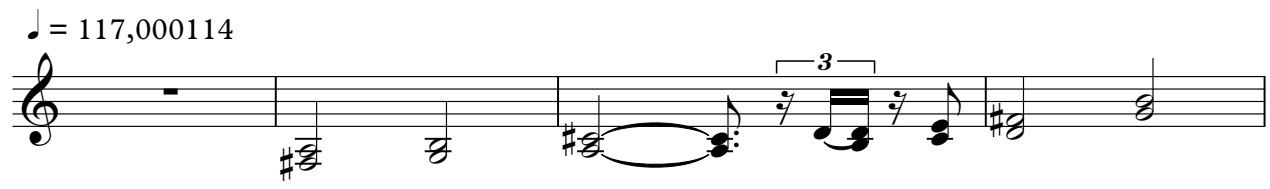
Perc.

J. Gtr.

Kora

A. Bass

# Piccolo



# Flute

♩ = 117,000114

45

51

# Percussion

♩ = 117,000114  
GUANTANA

4

6

8

10

12

14

16

18

20

V.S.

2

Percussion

23



25



27



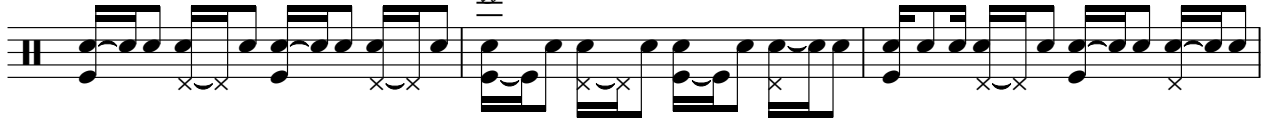
29



31



33



36



38



40



42



Percussion

44

Musical notation for measure 44, featuring a double bar line on the left and a series of eighth notes with beams across the staff. The notes are on the lower half of the staff. There are 'x' marks below the staff, indicating muted notes, positioned under the second, fourth, sixth, and eighth notes of the measure.

46

Musical notation for measure 46, featuring a double bar line on the left and a series of eighth notes with beams across the staff. The notes are on the lower half of the staff. There are 'x' marks below the staff, indicating muted notes, positioned under the second, fourth, sixth, and eighth notes of the measure.

48

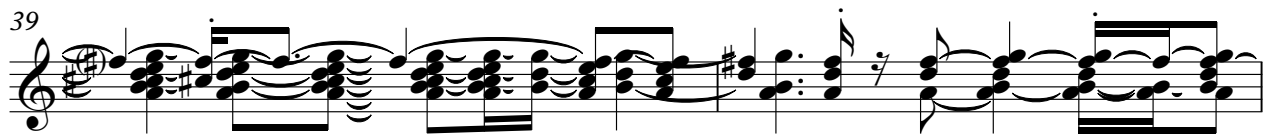
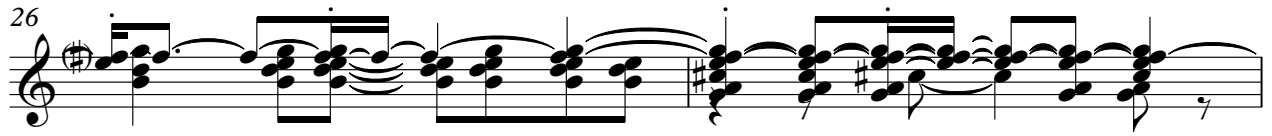
Musical notation for measure 48, featuring a double bar line on the left and a series of eighth notes with beams across the staff. The notes are on the lower half of the staff. There are 'x' marks below the staff, indicating muted notes, positioned under the second and fourth notes of the measure. The measure ends with a double bar line and a final note on the lower half of the staff.

51

Musical notation for measure 51, featuring a double bar line on the left and a single note on the lower half of the staff. The measure ends with a double bar line.









Kora

♩ = 117,000114



# Acoustic Bass

♩ = 117,000114



6



11



16



21



26



31



36



41



45



V.S.

