

Juliane Werding - Am Tag Als Conny Kramer Starb

♩ = 128,000000

FLUTE

DRUMS

GLOCKENSPL

JAZZ GTR

STEEL GTR

D				5	5	5	5	5	5
A				6	6	1	6	1	6
G				3	3	3	3	3	3
D				1	1	1	1	1	1
A									
B									
D				1	1	1	1	1	1

CLEAN GTR

ACOU BASS

CHOIR AAHS

MELODY

♩ = 128,000000

5

DRUMS

JAZZ GTR

STEEL GTR

CLEAN GTR

ACOU BASS

5 5 5 1 5 5 1 5 5 1 5 5 5 5 5

6 6 6 1 6 6 1 6 6 1 6 6 6 6 6

3 3 3 1 3 3 1 3 3 1 3 3 3 3 3

1 1 1 1 1 1 1 1 1 1 1 1 1 1 1



7

DRUMS

JAZZ GTR

STEEL GTR

CLEAN GTR

ACOU BASS

MELODY

5 5 5 1 5 5 1 5 5 1 5 5 5 5 5

6 6 6 1 6 6 1 6 6 1 6 6 6 6 6

3 3 3 1 3 3 1 3 3 1 3 3 3 3 3

1 1 1 1 1 1 1 1 1 1 1 1 1 1 1

9

DRUMS

STEEL GTR

CLEAN GTR

ACOU BASS

MELODY

Detailed description of measures 9-10: The drum part features a consistent pattern of eighth notes on the snare and bass drum. The steel guitar part is a complex rhythmic pattern with fret numbers: T (5, 6, 3, 1), A (3, 1, 1, 1), B (1, 1, 1, 1). The clean guitar part has a melodic line with a key signature of one flat. The acoustic bass part has a simple bass line. The melody part starts with a triplet of eighth notes.

11

DRUMS

STEEL GTR

CLEAN GTR

ACOU BASS

MELODY

Detailed description of measures 11-12: The drum part continues with the same eighth-note pattern. The steel guitar part has fret numbers: T (5, 6, 0, 5), A (6, 0, 0, 0), B (3, 3, 3, 3). The clean guitar part has a melodic line. The acoustic bass part has a simple bass line. The melody part has a triplet of eighth notes.

13

DRUMS

STEEL GTR

CLEAN GTR

ACOU BASS

MELODY

Detailed description of measures 13-14: The drum part continues with the same eighth-note pattern. The steel guitar part has fret numbers: T (5, 6, 0, 5), A (6, 0, 0, 0), B (3, 3, 3, 3). The clean guitar part has a melodic line. The acoustic bass part has a simple bass line. The melody part has a triplet of eighth notes.

15

DRUMS

STEEL GTR

CLEAN GTR

ACOU BASS

MELODY

17

DRUMS

STEEL GTR

CLEAN GTR

ACOU BASS

MELODY

19

DRUMS

STEEL GTR

CLEAN GTR

ACOU BASS

MELODY

21

DRUMS

GLOCKENSPL

STEEL GTR

CLEAN GTR

ACOU BASS

MELODY



23

DRUMS

GLOCKENSPL

JAZZ GTR

STEEL GTR

CLEAN GTR

ACOU BASS

MELODY

25

DRUMS

GLOCKENSPL

JAZZ GTR

STEEL GTR

T	7	7	7	1	7	7	1	7	7	1
A	6	6		3	6		3	6		3
B	3	3	3	3	3	3	3	3	3	3

CLEAN GTR

ACOU BASS

MELODY



26

DRUMS

GLOCKENSPL

JAZZ GTR

STEEL GTR

T	5	5	5	1	5	5	1	5	5	1
A	6	6		1	6		1	6		1
B	3	3	3	3	3	3	3	3	3	3

ACOU BASS

CHOIR AAHS

MELODY

27 7

DRUMS

GLOCKENSPL

JAZZ GTR

STEEL GTR

ACOUBASS

CHOIR AAHS

MELODY

Steel Guitar TAB for measures 27-31:

T	5	5	5	1	6	6	6	6	3
A	6	6	0	5	5	5	5	1	1
B	3	3	3	6	6	6	6	6	6



28

DRUMS

GLOCKENSPL

JAZZ GTR

STEEL GTR

ACOUBASS

CHOIR AAHS

MELODY

Steel Guitar TAB for measures 28-32:

T	5	5	5	1	5	5	1	5	1
A	3	3	1	1	3	3	1	3	1
B	6	1	1	1	1	1	1	1	1

29

DRUMS

JAZZ GTR

STEEL GTR

ACOUBASS

MELODY



30

DRUMS

GLOCKENSPL

JAZZ GTR

STEEL GTR

ACOUBASS

CHOIR AAHS

MELODY

31

DRUMS

GLOCKENSPL

JAZZ GTR

STEEL GTR

ACOUBASS

CHOIR AAHS

MELODY



32

DRUMS

GLOCKENSPL

JAZZ GTR

STEEL GTR

ACOUBASS

CHOIR AAHS

MELODY

34

FLUTE

DRUMS

JAZZ GTR

STEEL GTR

T	5	5	5 1	5	5 1	5	5	5	5 1	5	5 1	5	5 1
A	6	6	3 1	6	3 1	6	6	6	3 6	6	3 6	6	3 6
B	1	1	1 1	1	1 1	1	3	3	3 3	3	3 3	3	3

ACOUBASS

CHOIR AAHS

MELODY



36

FLUTE

DRUMS

GLOCKENSPL

JAZZ GTR

STEEL GTR

T	7	7	7 1	7	7 1	7	7 1	6	6	6 1	6	6 1	6	6 1
A	5	5	3 5	5	3 5	5	5	5	5	3 5	5	3 5	5	3 5
B	8	3	3 3	3	3 3	3	3	6	6	6 6	6	6 6	6	6 6

ACOUBASS

CHOIR AAHS

MELODY

38

FLUTE

DRUMS

GLOCKENSPL

JAZZ GTR

STEEL GTR

ACOU BASS

MELODY

Detailed description of measures 38-41: The score is in 4/4 time. Measure 38: Flute has a melodic line starting on G4. Drums play a steady quarter-note pattern. Glockenspiel plays a rhythmic pattern of eighth notes. Jazz Guitar has a complex solo with many accidentals. Steel Guitar has a TAB with fret numbers 6, 5, 6, 1, 6, 6, 5, 3, 6, 6, 5, 3, 6, 6, 5, 3, 5, 6. Acoustic Bass plays a simple bass line. Melody has a single note on G4. Measure 39: Similar patterns to measure 38. Measure 40: Similar patterns to measure 38. Measure 41: Similar patterns to measure 38, ending with a triplet in the Acoustic Bass.



39

DRUMS

GLOCKENSPL

JAZZ GTR

STEEL GTR

CLEAN GTR

ACOU BASS

Detailed description of measures 39-42: The score is in 4/4 time. Measure 39: Drums play a complex pattern with many accents. Glockenspiel plays a rhythmic pattern of eighth notes. Jazz Guitar has a melodic line starting on G4. Steel Guitar has a TAB with fret numbers 5, 5, 5, 5, 1, 5, 5, 1, 5, 5, 1, 5, 5, 5, 5, 5, 1, 5, 5, 1, 5, 5, 1. Clean Guitar has a simple bass line. Acoustic Bass plays a simple bass line. Measure 40: Similar patterns to measure 39. Measure 41: Similar patterns to measure 39. Measure 42: Similar patterns to measure 39, ending with a triplet in the Acoustic Bass.

41

DRUMS

GLOCKENSPL

JAZZ GTR

STEEL GTR

CLEAN GTR

ACOU BASS

T	5	5	5	5	1	5	5	1	5	5	5	5	1	5	5	5	5	1	5	5	1
A	6	6	6	6	1	6	6	1	6	6	6	6	1	6	6	6	6	1	6	6	1
B	1	3	3	1	1	3	3	1	1	3	3	1	1	3	3	1	1	1	3	3	1
	.	1	1	1	1	1	1	1	1	1	1	1	1	1	1	1	1	1	1	1	1



43

DRUMS

JAZZ GTR

STEEL GTR

CLEAN GTR

ACOU BASS

MELODY

T	5	5	5	5	1	5	5	1	5	5	5	5	1
A	6	6	6	6	3	6	6	3	6	6	6	6	3
B	3	3	3	3	3	3	3	3	3	3	3	3	3

44

DRUMS

JAZZ GTR

STEEL GTR

CLEAN GTR

ACOU BASS

MELODY

Steel guitar TAB for measures 44-45:

T	5	5	5 1	5	5 1	5	5 1	6	6	6 6	6	6	6 3
A	6	6	1 6	6	1 6	6	1	5	5	5 5	3	5	1
B	1	1	1 1	1 1	1	1	0	0	0	0 0	0	0	0



46

DRUMS

JAZZ GTR

STEEL GTR

CLEAN GTR

ACOU BASS

MELODY

Steel guitar TAB for measures 46-47:

T	5	5	5 1	5	5 1	5	5	5	5 1	5	5 1	5	5 1
A	6	6	3 6	6	3 6	0	6	6	1 6	3	1 6	3	1
B	3	3	3 3	3 3	3	1	1	1 1	1 1	1	1 1	1	1

48

DRUMS

JAZZ GTR

STEEL GTR

T	5	5	5	1	5	5	1	5	5	1	6	6	6	6	6	6	6	6	3	6	6	3
A	6	6	6	3	6	6	3	6	6	3	0	5	5	5	5	1	5	1	4	5	4	4
B	3	3	3	3	3	3	3	3	3	6	6	6	6	6	6	6	6	6	6	6	6	6

CLEAN GTR

ACOU BASS

MELODY



50

DRUMS

JAZZ GTR

STEEL GTR

T	5	5	5	1	5	5	1	5	5	1	6	6	6	6	6	6	6	6	3	6	6	3
A	6	6	6	3	6	6	3	6	6	3	0	5	5	5	5	1	5	1	4	5	4	4
B	3	3	3	3	3	3	3	3	3	6	6	6	6	6	6	6	6	6	6	6	6	6

CLEAN GTR

ACOU BASS

MELODY

52

DRUMS

JAZZ GTR

STEEL GTR

CLEAN GTR

ACOU BASS

MELODY

Steel guitar TAB for measures 52-53:

T	5	5	5 1	5	5 1	5	5 1	5	5	5 1	5	5 1	5	5 1
A	3	3	1 3	1	3	1	3	0 3	0 3	0 3	0 3	0 3	0 3	0 3
B	6	1	1 1	1 1	1 1	1	3	3	3 3	3 3	3 3	3 3	3	3



54

DRUMS

JAZZ GTR

STEEL GTR

CLEAN GTR

ACOU BASS

MELODY

Steel guitar TAB for measures 54-55:

T	6	6	6 6	6	6	6	5	5	5 1	5	5 1	5	5 1
A	5	5	5 5	1 5	1	3	0 3	0 3	0 3	0 3	0 3	0 3	0 3
B	6	6	6 6	6 6	6 6	6	3	3	3 3	3 3	3 3	3 3	3

56

DRUMS

GLOCKENSPL

JAZZ GTR

STEEL GTR

CLEAN GTR

ACOU BASS

MELODY

TAB for STEEL GTR (Measures 56-57):

6	6	6	6	6	6	5	5	5	5	5	5	5	5
5	5	5	5	3	6	3	6	3	6	1	6	1	6
6	6	6	6	6	6	1	3	1	3	1	3	1	3
6	6	6	6	6	6	6	1	1	1	1	1	1	1



58

DRUMS

GLOCKENSPL

JAZZ GTR

STEEL GTR

CLEAN GTR

ACOU BASS

MELODY

TAB for STEEL GTR (Measures 58-59):

5	5	5	5	5	5	7	7	7	7	7	7	7	7
6	6	3	6	3	6	6	6	3	6	3	6	3	6
8	8	0	8	0	8	5	5	3	5	3	5	3	5
3	3	3	3	3	3	8	3	3	3	3	3	3	3

60

DRUMS

GLOCKENSPL

JAZZ GTR

STEEL GTR

CLEAN GTR

ACOU BASS

MELODY



61

DRUMS

GLOCKENSPL

JAZZ GTR

STEEL GTR

ACOU BASS

CHOIR AAHS

MELODY

62

DRUMS

GLOCKENSPL

JAZZ GTR

STEEL GTR

ACOUBASS

CHOIR AAHS

MELODY



63

DRUMS

GLOCKENSPL

JAZZ GTR

STEEL GTR

ACOUBASS

CHOIR AAHS

MELODY

64

DRUMS

JAZZ GTR

STEEL GTR

ACOUBASS

MELODY



65

DRUMS

GLOCKENSPL

JAZZ GTR

STEEL GTR

ACOUBASS

CHOIR AAHS

MELODY

66

DRUMS

GLOCKENSPL

JAZZ GTR

STEEL GTR

ACOU BASS

CHOIR AAHS

MELODY



67

DRUMS

GLOCKENSPL

JAZZ GTR

STEEL GTR

ACOU BASS

CHOIR AAHS

MELODY

69

FLUTE

DRUMS

JAZZ GTR

STEEL GTR

ACOUBASS

CHOIR AAHS

MELODY

71

FLUTE

DRUMS

GLOCKENSPL

JAZZ GTR

STEEL GTR

ACOUBASS

CHOIR AAHS

MELODY

73

FLUTE

DRUMS

GLOCKENSPL

JAZZ GTR

STEEL GTR

ACOUBASS

MELODY



74

DRUMS

GLOCKENSPL

JAZZ GTR

STEEL GTR

CLEAN GTR

ACOUBASS

76

DRUMS

GLOCKENSPL

JAZZ GTR

STEEL GTR

CLEAN GTR

ACOU BASS



78

DRUMS

JAZZ GTR

STEEL GTR

CLEAN GTR

ACOU BASS

MELODY

79

DRUMS

JAZZ GTR

STEEL GTR

CLEAN GTR

ACOU BASS

MELODY

TAB: T 5 5 5 1 5 5 1 5 5 1 6 6 6 6 6 6 3; A 6 6 6 3 6 3 6 3 6 3 6 6 6 6 6 6 1; B 1 1 1 1 1 1 1 1 1 0 0 0 0 0 0 0 0



81

DRUMS

JAZZ GTR

STEEL GTR

CLEAN GTR

ACOU BASS

CHOIR AAHS

MELODY

TAB: T 5 5 5 1 5 5 1 5 5 1 5 5 1 5 5 1 5 5 1; A 6 6 6 3 6 3 6 3 6 3 6 6 6 6 6 6 6 6 1; B 3 3 3 3 3 3 3 1 1 1 1 1 1 1 1 1 1 1 1

83

DRUMS

JAZZ GTR

STEEL GTR

CLEAN GTR

ACOU BASS

CHOIR AAHS

MELODY

Steel guitar TAB for measures 83-84:

5	5	5	1	5	5	1	5	5	1	6	6	6	6	6	3	6	6	3
6	6	6	3	6	6	3	6	6	3	5	5	5	5	4	5	6	6	4
3	3	3	3	3	3	3	3	3	3	6	6	6	6	6	6	6	6	6



85

DRUMS

JAZZ GTR

STEEL GTR

CLEAN GTR

ACOU BASS

CHOIR AAHS

MELODY

Steel guitar TAB for measures 85-86:

5	5	5	1	5	5	1	5	5	1	6	6	6	6	6	6	3	6	6	3
6	6	6	3	6	6	3	6	6	3	5	5	5	5	1	5	6	6	1	1
3	3	3	3	3	3	3	3	3	3	6	6	6	6	6	6	6	6	6	6

87

DRUMS

JAZZ GTR

STEEL GTR

T	5	5	5 1	5	5 1	5	5 1	5	5	5 1	5	5 1	5	5 1
A	3	3	1 3	1 3	1 3	1 3	1 3	3	3	3 3	3 3	3 3	3 3	3
B	6	6	1 1	1 1	1 1	1 1	1	3	3	3 3	3 3	3 3	3 3	3

CLEAN GTR

ACOU BASS

CHOIR AAHS

MELODY



89

DRUMS

JAZZ GTR

STEEL GTR

T	6	6	6 6	6	6	6	5	5	5 1	5	5 1	5	5 1	5 1
A	5	5	5 5	1 5	3	3	3	3	3 3	3 3	3 3	3 3	3 3	3
B	6	6	6 6	6 6	6 6	6 6	6	3	3	3 3	3 3	3 3	3 3	3

CLEAN GTR

ACOU BASS

CHOIR AAHS

MELODY

91

DRUMS

GLOCKENSPL

JAZZ GTR

STEEL GTR

CLEAN GTR

ACOU BASS

CHOIR AAHS

MELODY

String	6	6	6	6	6	6	5	5	5	5	5	5	5
T	6	6	6	6	6	6	5	5	5	5	5	5	5
A	5	5	5	5	1	3	3	3	3	3	3	3	3
B	6	6	6	6	6	6	6	6	6	6	6	6	6

93

DRUMS

GLOCKENSPL

JAZZ GTR

STEEL GTR

CLEAN GTR

ACOU BASS

CHOIR AAHS

MELODY



95

DRUMS

GLOCKENSPL

JAZZ GTR

STEEL GTR

CLEAN GTR

ACOU BASS

MELODY

96

DRUMS

GLOCKENSPL

JAZZ GTR

STEEL GTR

ACOUBASS

CHOIR AAHS

MELODY



97

DRUMS

GLOCKENSPL

JAZZ GTR

STEEL GTR

ACOUBASS

CHOIR AAHS

MELODY

98

DRUMS

GLOCKENSPL

JAZZ GTR

STEEL GTR

ACOUBASS

CHOIR AAHS

MELODY



99

DRUMS

JAZZ GTR

STEEL GTR

ACOUBASS

MELODY

100

DRUMS

GLOCKENSPL

JAZZ GTR

STEEL GTR

ACOUBASS

CHOIR AAHS

MELODY

5 5 5 5 5 5 5 5 5 5
6 6 6 6 6 6 6 6 6 6
3 3 3 3 3 3 3 3 3 3
1 1 1 1 1 1 1 1 1 1



101

DRUMS

GLOCKENSPL

JAZZ GTR

STEEL GTR

ACOUBASS

CHOIR AAHS

MELODY

5 5 5 5 5 5 5 5 5 5
6 6 6 6 6 6 6 6 6 6
3 3 3 3 3 3 3 3 3 3
1 1 1 1 1 1 1 1 1 1

102

DRUMS

GLOCKENSPL

JAZZ GTR

STEEL GTR

ACO U BASS

CHOIR AAHS

MELODY

TAB

T	5	5	5 1	5	5 1	5	5 1	5	5	5 1	5	5 1	5	5 1	5
A	3	3	3 1	3	3 1	3	3 1	3	3	3 1	3	3 1	3	3 1	3
B	6	6	6 1	6	6 1	6	6 1	6	6	6 1	6	6 1	6	6 1	6
	1	1	1 1	1	1 1	1	1 1	1	3	3	3 3	3	3 3	3	3



104

FLUTE

DRUMS

JAZZ GTR

STEEL GTR

ACO U BASS

CHOIR AAHS

MELODY

TAB

T	5	5	5 1	5	5 1	5	5 1	5	5	5 1	5	5 1	5	5 1	5
A	3	3	3 1	3	3 1	3	3 1	3	3	3 1	3	3 1	3	3 1	3
B	1	1	1 1	1	1 1	1	1 1	1	3	3	3 3	3	3 3	3	3

106

FLUTE

DRUMS

GLOCKENSPL

JAZZ GTR

STEEL GTR

ACOUBASS

CHOIR AAHS

MELODY

T 7 7 7 1 7 7 1 7 7 1 6 6 6 1 6 6 1 6 6 1

A 5 5 5 3 5 5 3 5 5 5 5 5 3 5 5 3

B 8 3 3 3 3 3 3 6 6 6 6 6 6 6 6 6



108

FLUTE

DRUMS

GLOCKENSPL

JAZZ GTR

STEEL GTR

ACOUBASS

MELODY

T 6 6 6 1 6 6 6 3 6 6 6 3 5 6

A 5 5 5 1 5 5 5 3 5 5 5 3 5 1

B 6 6 6 6 6 6 6 6 6 6 6 6 6 6

109

FLUTE

DRUMS

GLOCKENSPL

JAZZ GTR

STEEL GTR

CLEAN GTR

ACOU BASS

CHOIR AAHS

MELODY

DRUMS

Juliane Werding - Am Tag Als Conny Kramer Starb

♩ = 128,000000

2

5

7

9

11

13

15

17

19

21

V.S.

DRUMS

23

25

26

28

30

32

34

36

38

40

3

6

6

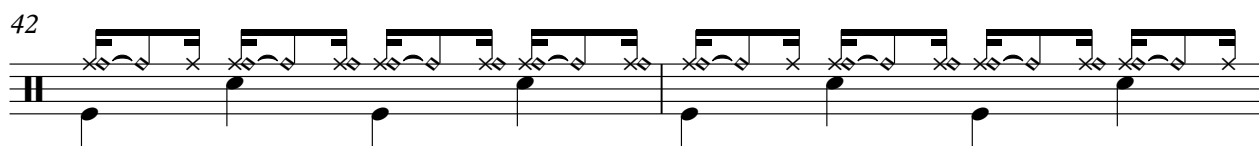
6

3

Detailed description: This image shows a drum score for measures 23 through 40. The score is written on two staves per measure: a top staff for the snare drum and a bottom staff for the bass drum. Measure 23 features a steady eighth-note pattern on the snare and a simple bass drum accompaniment. Measure 25 introduces a triplet of eighth notes on the snare, followed by sixteenth-note runs on both drums. Measure 26 continues with a complex snare pattern of eighth and sixteenth notes. Measure 28 shows a snare pattern with a triplet of eighth notes. Measure 30 features a snare pattern with a triplet of eighth notes. Measure 32 has a snare pattern with a triplet of eighth notes. Measure 34 continues with a snare pattern. Measure 36 has a snare pattern. Measure 38 features a snare pattern with a triplet of eighth notes. Measure 40 returns to a steady eighth-note pattern on the snare and a simple bass drum accompaniment.

DRUMS

42



44



46



48




50



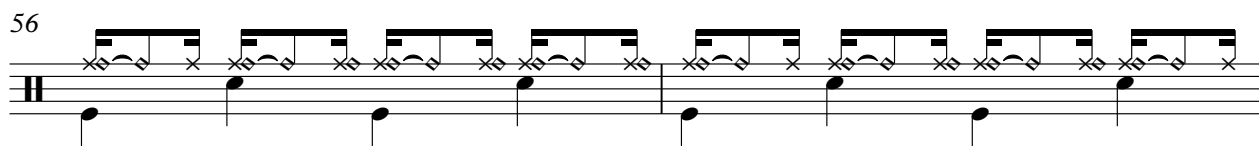
52



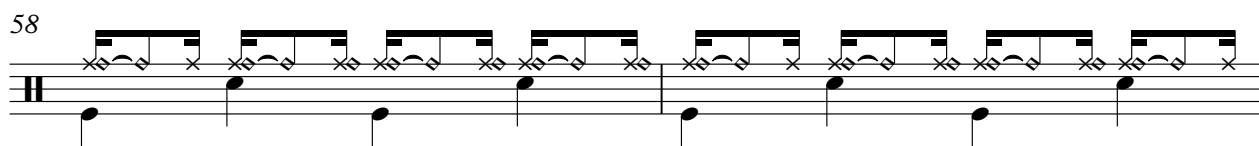
54



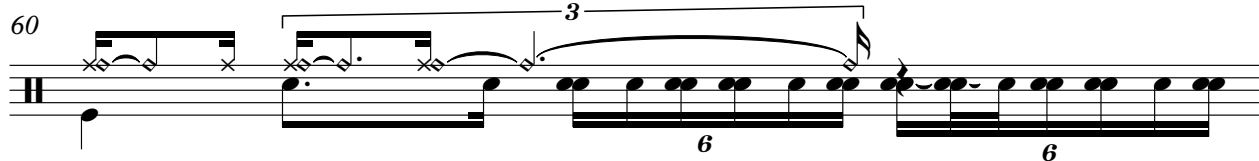
56



58



60



V.S.

DRUMS

61

63

65

67

69

71

73

75

77

79

6

3

The image displays a drum score for measures 61 through 79. Each measure is represented by a pair of staves: the top staff uses a standard drum notation with 'x' marks for cymbals and various note values for other drums, while the bottom staff uses a simplified notation with dots and lines. The score includes several musical notations such as slurs, accents, and specific rhythmic markings. In measure 65, there are markings for a sixteenth-note triplet (6) and a triplet of eighth notes (3). The notation is consistent throughout the page, showing a complex rhythmic pattern.

DRUMS

81

Musical notation for measure 81, featuring a drum staff with a repeating eighth-note pattern and a bass staff with a simple bass line.

83

Musical notation for measure 83, featuring a drum staff with a repeating eighth-note pattern and a bass staff with a simple bass line.

85

Musical notation for measure 85, featuring a drum staff with a repeating eighth-note pattern and a bass staff with a simple bass line.

87

Musical notation for measure 87, featuring a drum staff with a repeating eighth-note pattern and a bass staff with a simple bass line.

89

Musical notation for measure 89, featuring a drum staff with a repeating eighth-note pattern and a bass staff with a simple bass line.

91

Musical notation for measure 91, featuring a drum staff with a repeating eighth-note pattern and a bass staff with a simple bass line.

93

Musical notation for measure 93, featuring a drum staff with a repeating eighth-note pattern and a bass staff with a simple bass line.

95

Musical notation for measure 95, featuring a drum staff with a triplet and a bass staff with a sixteenth-note pattern.

96

Musical notation for measure 96, featuring a drum staff with a repeating eighth-note pattern and a bass staff with a simple bass line.

98

Musical notation for measure 98, featuring a drum staff with a repeating eighth-note pattern and a bass staff with a simple bass line.

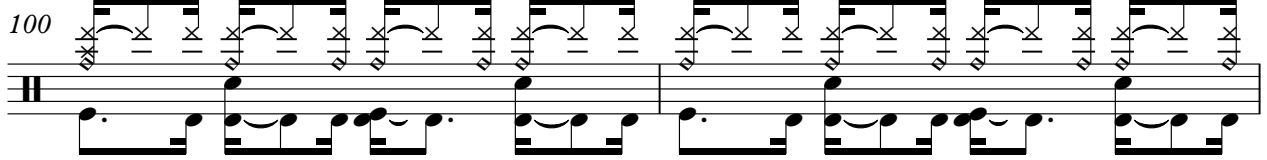
V.S.

6 3

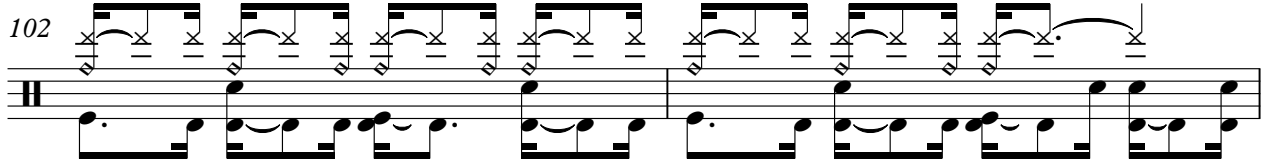
6

DRUMS

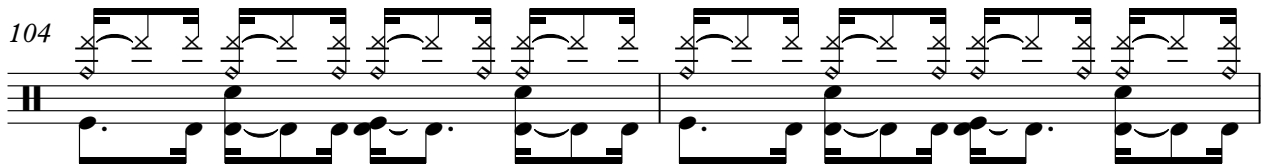
100



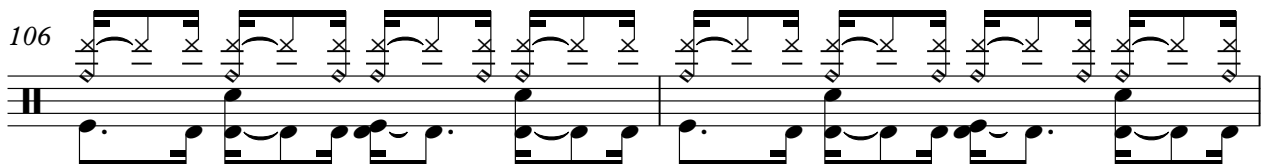
102



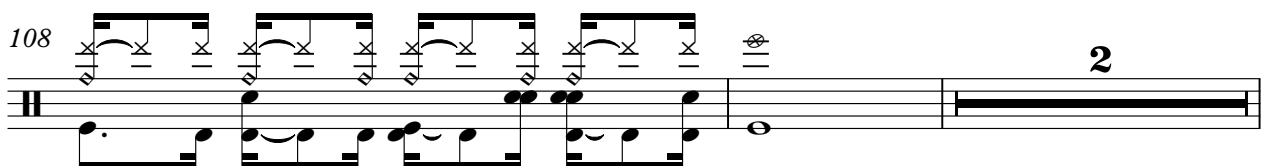
104



106

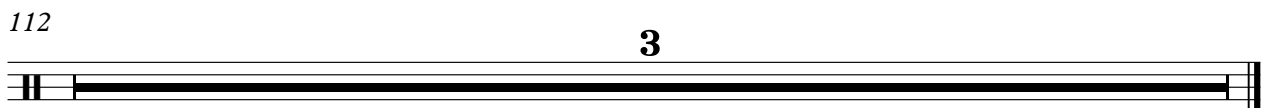


108



112

3



GLOCKENSPL

Juliane Werding - Am Tag Als Conny Kramer Starb

♩ = 128,000000

20

23

27

32

39

43

59

63

68

75

14

4

14

GLOCKENSPL

92



95



100



107



112



♩ = 128,000000

7 15

25 3

28

31

34

37 3

40 3

44 3

48

Detailed description: The image shows a guitar score for the piece 'Am Tag Als Conny Kramer Starb' by Juliane Werding. The score is written in 4/4 time with a tempo of 128,000000. It consists of ten staves of music. The first staff starts with a treble clef and a 4/4 time signature. The second staff begins with a key signature change to two flats (B-flat and E-flat) and contains a 15-measure rest. The third staff features a triplet of eighth notes. The fourth staff continues with eighth-note patterns. The fifth staff has a key signature change to one flat (B-flat). The sixth staff continues with eighth-note patterns. The seventh staff features a triplet of eighth notes. The eighth staff has a key signature change to one sharp (F#) and contains a triplet of eighth notes. The ninth staff has a key signature change to two flats (B-flat and E-flat) and contains a triplet of eighth notes. The tenth staff continues with eighth-note patterns.

53

58

62

65

68

71

74

78

82

87

92

97

100

103

106

109

Juliane Werding - Am Tag Als Conny Kramer Starb

STEEL GTR

♩ = 128,000000

2

System 2: Tablature for measures 2-3. Includes a thick black bar on the D string in measure 2. Fingering: 5 5 5 1 5 5 1 5 5 1 | 5 5 5 1 5 5 1 5 5 1.

6

System 6: Tablature for measures 6-7. Fingering: 5 5 5 1 5 5 5 5 5 1 5 5 1 5 5 1 | 5 5 5 1 5 5 1 5 5 1 5 5 1 5 5 1.

9

System 9: Tablature for measures 9-10. Fingering: 5 5 5 1 5 5 1 5 5 1 | 6 6 6 6 6 6 6 6 6 6 | 5 5 5 1 5 5 1 5 5 1.

12

System 12: Tablature for measures 12-13. Fingering: 5 5 5 1 5 5 1 5 5 1 | 5 5 5 1 5 5 1 5 5 1 | 6 6 6 6 6 6 6 6 6 6 | 5 5 5 1 5 5 1 5 5 1.

15

System 15: Tablature for measures 15-16. Fingering: 5 5 5 1 5 5 1 5 5 1 | 6 6 6 6 6 6 6 6 6 6 | 5 5 5 1 5 5 1 5 5 1.

18

System 18: Tablature for measures 18-19. Fingering: 5 5 5 1 5 5 1 5 5 1 | 6 6 6 6 6 6 6 6 6 6 | 5 5 5 1 5 5 1 5 5 1.

21

System 21: Tablature for measures 21-22. Fingering: 6 6 6 6 6 6 3 | 5 1 5 5 1 5 5 1 | 5 5 5 1 5 5 1 5 5 1.

24

System 24: Tablature for measures 24-25. Fingering: 7 7 7 1 7 7 1 7 7 1 | 7 7 7 1 7 7 1 7 7 1 | 5 5 5 1 5 5 1 5 5 1.

27

System 27: Tablature for measures 27-28. Fingering: 5 5 5 1 6 6 6 3 | 5 5 5 1 5 5 1 5 5 1 | 5 5 5 1 5 5 1 5 5 1.

30

System 30: Tablature for measures 30-31. Fingering: 5 5 5 1 5 5 1 5 5 1 | 5 5 5 1 6 6 6 6 | 5 5 5 1 5 5 1 5 5 1.

V.S.

62

T	5	5	5	1	6	6	6	6	5	5	5	1	5	5	1	5	5	1	5	5	1	5	5	1	5	5	1
A	6	6	3	0	5	5	5	3	6	6	1	6	1	6	1	6	6	3	6	3	6	3	6	3	6	3	6
B	3	3	3	6	6	6	6	6	6	1	1	1	1	1	1	1	3	3	3	3	3	3	3	3	3	3	3

65

T	5	5	5	1	5	5	1	5	5	1	5	5	1	6	6	6	6	5	5	5	1	5	5	1	5	5	1
A	6	6	1	6	1	6	1	6	6	6	3	6	6	3	6	6	3	6	6	1	6	1	6	1	6	1	6
B	1	1	1	1	1	1	1	1	3	3	3	6	6	6	6	6	6	1	1	1	1	1	1	1	1	1	1

68

T	5	5	5	1	5	5	1	5	5	1	5	5	1	5	5	1	5	5	1	5	5	1	5	5	1	5	5	1
A	6	6	0	6	0	6	0	6	3	6	6	1	6	1	6	1	6	6	0	6	0	6	0	6	0	6	0	6
B	3	3	3	3	3	3	3	3	1	1	1	1	1	1	1	1	3	3	3	3	3	3	3	3	3	3	3	3

71

T	7	7	7	1	7	7	1	7	7	1	6	6	6	1	6	6	1	6	6	1	6	6	1	6	6	1	6	6	1
A	6	6	3	6	3	6	3	6	3	6	6	6	3	6	6	3	6	6	3	6	6	3	6	6	3	6	6	3	
B	8	3	3	3	3	3	3	3	6	6	6	6	6	6	6	6	6	6	6	6	6	6	6	6	6	6	6	6	

74

T	5	5	5	5	1	5	5	1	5	5	1	5	5	1	5	5	1	5	5	1	5	5	1	5	5	1	5	5	1
A	6	6	6	6	1	6	1	6	1	6	1	6	1	6	1	6	1	6	1	6	1	6	1	6	1	6	1	6	1
B	1	1	1	1	1	1	1	1	1	1	1	1	1	1	1	1	1	1	1	1	1	1	1	1	1	1	1	1	1

76

T	5	5	5	5	1	5	5	1	5	5	1	5	5	1	5	5	1	5	5	1	5	5	1	5	5	1	5	5	1
A	6	6	6	6	1	6	1	6	1	6	1	6	1	6	1	6	1	6	1	6	1	6	1	6	1	6	1	6	1
B	1	1	1	1	1	1	1	1	1	1	1	1	1	1	1	1	1	1	1	1	1	1	1	1	1	1	1	1	1

79

T	5	5	5	1	5	5	1	5	5	1	6	6	6	6	6	6	6	5	5	5	1	5	5	1	5	5	1	5	5	1
A	6	6	1	6	1	6	1	6	1	6	3	6	3	6	3	6	3	6	6	3	6	3	6	3	6	3	6	3	6	3
B	1	1	1	1	1	1	1	1	1	1	5	5	5	5	1	5	1	6	6	0	6	0	6	0	6	0	6	0	6	0

82

T	5	5	5	1	5	5	1	5	5	1	5	5	1	5	5	1	5	5	1	6	6	6	6	6	6	6	6	6	6
A	6	6	1	6	1	6	1	6	1	6	3	6	3	6	3	6	3	6	3	6	6	6	6	6	6	6	6	6	6
B	1	1	1	1	1	1	1	1	1	1	6	6	6	6	6	6	6	6	6	3	3	3	3	3	3	3	3	3	3

85

T	5	5	5	1	5	5	1	5	5	1	6	6	6	6	6	6	6	5	5	5	1	5	5	1	5	5	1	5	5	1
A	6	6	3	6	3	6	3	6	3	6	3	6	3	6	3	6	3	6	6	1	6	1	6	1	6	1	6	1	6	1
B	3	3	3	3	3	3	3	3	3	3	6	6	6	6	6	6	6	6	3	3	3	3	3	3	3	3	3	3	3	3

88

T	5	5	5	1	5	5	1	5	5	1	6	6	6	6	6	6	6	5	5	5	1	5	5	1	5	5	1	5	5	1
A	6	6	3	6	3	6	3	6	3	6	3	6	3	6	3	6	3	6	6	3	6	3	6	3	6	3	6	3	6	3
B	3	3	3	3	3	3	3	3	3	3	6	6	6	6	6	6	6	6	3	3	3	3	3	3	3	3	3	3	3	3

V.S.

♩ = 128,000000

2

7

11

15

19

23

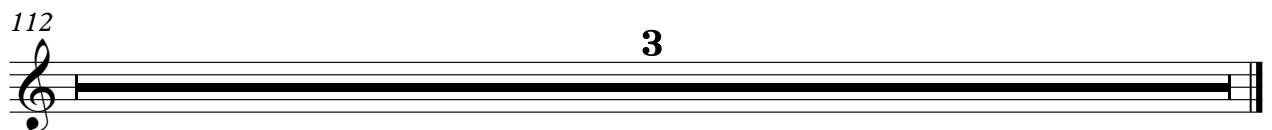
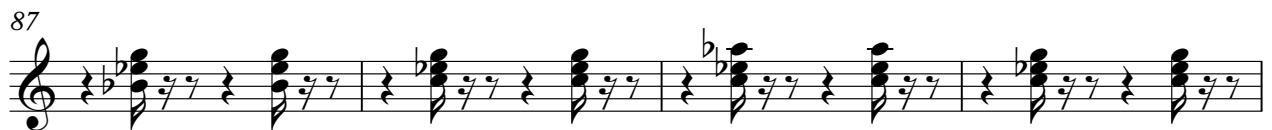
13

39

43

47

51



ACOU BASS

Juliane Werding - Am Tag Als Conny Kramer Starb

♩ = 128,000000

2



8



15



22



28



32



38



44



51



58



V.S.

63

67

73

79

86

93

98

102

106

112

3

♩ = 128,000000

24

31

38

23

67

9

82

2

92

2

101

106

4

3

MELODY

Juliane Werding - Am Tag Als Conny Kramer Starb

♩ = 128,000000

6

11

16

20

25

30

35

4



MELODY

90



95



100



105



112

