

Koos Alberts - Ik Zal Er Altijd Voor Je Zijn

♩ = 98,000786

HIHAT

SNARE

BASE

CRASH

TIK

TIMBAL

BELLS

BAS

STRINGS 1

STRINGS 2

SOLO GITA

FLUTE

DUB KOOR

5

HIHAT

SNARE

BASE

TIMBAL

BELLS

BAS

STRINGS 1

STRINGS 2

SOLO GITA

FLUTE

DUB KOOR

8

HIHAT

SNARE

BASE

CRASH

TIK

BELLS

BAS

STRINGS 1

STRINGS 2

SOLO GITA

FLUTE

DUB KOOR

12

HIHAT

BASE

TIK

BELLS

BAS

STRINGS 1

STRINGS 2

DUB KOOR



16

HIHAT

SNARE

BASE

CRASH

TIK

TIMBAL

BELLS

BAS

STRINGS 1

STRINGS 2

FLUTE

DUB KOOR

20

HIHAT

SNARE

BASE

TIMBAL

BELLS

BAS

STRINGS 1

STRINGS 2

FLUTE

DUB KOOR



24

HIHAT

SNARE

BASE

CRASH

TIMBAL

BELLS

BAS

STRINGS 1

STRINGS 2

FLUTE

DUB KOOR

28

HIHAT

SNARE

BASE

TIMBAL

BELLS

BAS

STRINGS 1

STRINGS 2

FLUTE

DUB KOOR



32

HIHAT

SNARE

BASE

CRASH

TIK

BELLS

BAS

STRINGS 1

STRINGS 2

FLUTE

DUB KOOR

36

HIHAT

BASE

TIK

BELLS

BAS

STRINGS 1

STRINGS 2

DUB KOOR



40

HIHAT

SNARE

BASE

CRASH

TIK

TIMBAL

BELLS

BAS

STRINGS 1

STRINGS 2

FLUTE

DUB KOOR

44

HIHAT

SNARE

BASE

TIMBAL

BELLS

BAS

STRINGS 1

STRINGS 2

FLUTE

DUB KOOR



48

HIHAT

SNARE

BASE

CRASH

TIMBAL

BELLS

BAS

STRINGS 1

STRINGS 2

FLUTE

DUB KOOR

52

HIHAT

SNARE

BASE

TIMBAL

BELLS

BAS

STRINGS 1

STRINGS 2

FLUTE

DUB KOOR



56

HIHAT

SNARE

BASE

CRASH

TIMBAL

BELLS

BAS

STRINGS 1

STRINGS 2

SOLO GITA

FLUTE

DUB KOOR

59

HIHAT

SNARE

BASE

CRASH

BELLS

BAS

STRINGS 1

STRINGS 2

SOLO GITA

FLUTE

DUB KOOR



62

HIHAT

SNARE

BASE

TIMBAL

BELLS

BAS

STRINGS 1

STRINGS 2

SOLO GITA

FLUTE

DUB KOOR

65

HIHAT
SNARE
BASE
CRASH
TIMBAL
BELLS
BAS
STRINGS 1
STRINGS 2
SOLO GITA
FLUTE
DUB KOOR

Detailed description: This block contains the musical score for measures 65, 66, and 67. The instruments listed are HIHAT, SNARE, BASE, CRASH, TIMBAL, BELLS, BAS (bass guitar), STRINGS 1, STRINGS 2, SOLO GITA, FLUTE, and DUB KOOR. The HIHAT part features a continuous rhythmic pattern of eighth notes. The SNARE part has a pattern of quarter notes with rests. The BASE part consists of eighth notes. The CRASH part is mostly silent with a single crash symbol in measure 67. The TIMBAL part has a pattern of eighth notes starting in measure 66. The BELLS part has a pattern of quarter notes with rests. The BAS part is shown as a guitar tab with fret numbers: 0 0 2 0 5 5 0 0 in measure 65; 0 0 2 2 0 0 2 0 in measure 66; and 2 2 4 4 2 2 4 2 in measure 67. The STRINGS 1 and 2 parts have complex chordal and melodic lines. The SOLO GITA part has a melodic line with a slur. The FLUTE part has a melodic line with slurs and accents. The DUB KOOR part has a simple harmonic line.



68

HIHAT
SNARE
BASE
TIMBAL
BELLS
BAS
STRINGS 1
STRINGS 2
FLUTE
DUB KOOR

Detailed description: This block contains the musical score for measures 68, 69, and 70. The instruments listed are HIHAT, SNARE, BASE, TIMBAL, BELLS, BAS, STRINGS 1, STRINGS 2, FLUTE, and DUB KOOR. The HIHAT part continues with the same rhythmic pattern. The SNARE part has a pattern of quarter notes with rests. The BASE part consists of eighth notes. The TIMBAL part has a pattern of eighth notes starting in measure 69. The BELLS part has a pattern of quarter notes with rests. The BAS part is shown as a guitar tab with fret numbers: 2 2 ? ? 2 2 4 6 in measure 68; 0 0 2 2 0 0 2 0 in measure 69; and 4 4 ? ? 4 4 ? 4 in measure 70. The STRINGS 1 and 2 parts have complex chordal and melodic lines. The FLUTE part has a melodic line with slurs and accents. The DUB KOOR part has a simple harmonic line.

71

HIHAT

SNARE

BASE

CRASH

BELLS

BAS

STRINGS 1

STRINGS 2

FLUTE

DUB KOOR



73

HIHAT

SNARE

BASE

CRASH

TIMBAL

BELLS

BAS

STRINGS 1

STRINGS 2

FLUTE

DUB KOOR

HIHAT

Koos Alberts - Ik Zal Er Altijd Voor Je Zijn

♩ = 98,000786
HIHAT

5

8

11

13

15

18

21

24

27

V.S.

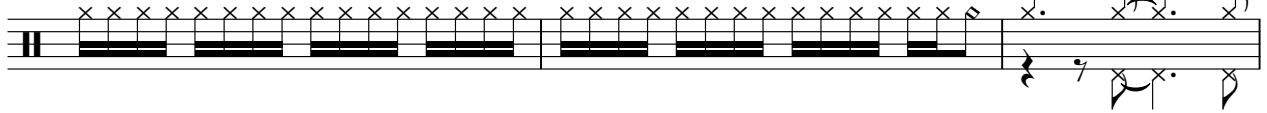
2

HIHAT

29



32



35



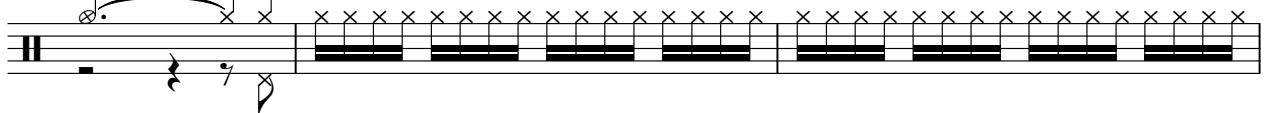
37



39



42



45



48



51



53



56

Guitar tab for measure 56. The staff shows a series of chords with 'x' marks above them, indicating muted notes. The measure concludes with a melodic phrase consisting of a quarter note, a dotted quarter note, and an eighth note, all with 'x' marks above them.

59

Guitar tab for measure 59. The staff shows a series of chords with 'x' marks above them, indicating muted notes. The measure concludes with a melodic phrase consisting of a quarter note, a dotted quarter note, and an eighth note, all with 'x' marks above them.

61

Guitar tab for measure 61. The staff shows a series of chords with 'x' marks above them, indicating muted notes.

63

Guitar tab for measure 63. The staff shows a series of chords with 'x' marks above them, indicating muted notes.

65

Guitar tab for measure 65. The staff shows a series of chords with 'x' marks above them, indicating muted notes.

68

Guitar tab for measure 68. The staff shows a series of chords with 'x' marks above them, indicating muted notes.

71

Guitar tab for measure 71. The staff shows a series of chords with 'x' marks above them, indicating muted notes.

73

Guitar tab for measure 73. The staff shows a series of chords with 'x' marks above them, indicating muted notes. The measure concludes with a melodic phrase consisting of a quarter note, a dotted quarter note, and an eighth note, all with 'x' marks above them.

Koos Alberts - Ik Zal Er Altijd Voor Je Zijn

SNARE

♩ = 98,000786
SNARE



6



11

7



22



26



30



33

7



2

SNARE

42



47



51



56



61



65



70



73



Koos Alberts - Ik Zal Er Altijd Voor Je Zijn

BASE

♩ = 98,000786

BASE 2



7



12



17



22



27



32



37



42



47



V.S.

2

BASE

52



57



62



67



71



CRASH

Koos Alberts - Ik Zal Er Altijd Voor Je Zijn

♩ = 98,000786

CRASH

2 6 7

4/4

20

7 6 7

4/4

43

7 6

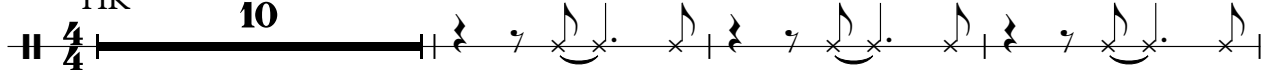
4/4

60

7 3 2

4/4

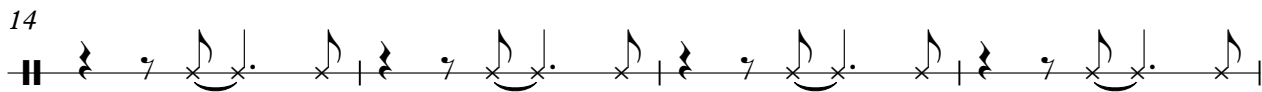
♩ = 98,000786
TIK



10

Musical staff with a 4/4 time signature. It begins with a double bar line and a measure rest of 10 measures. The notation then continues with a sequence of eighth notes and quarter notes, including beams and slurs.

14



Musical staff with a sequence of eighth notes and quarter notes, including beams and slurs.

18



17

Musical staff with a measure rest of 17 measures, followed by a sequence of eighth notes and quarter notes, including beams and slurs.

38



Musical staff with a sequence of eighth notes and quarter notes, including beams and slurs.

41



34

Musical staff with a sequence of eighth notes and quarter notes, followed by a measure rest of 34 measures.

TIMBAL

Koos Alberts - Ik Zal Er Altijd Voor Je Zijn

♩ = 98,000786
TIMBAL

1

18

26

42

50

58

66

71

BELLS

Koos Alberts - Ik Zal Er Altijd Voor Je Zijn

♩ = 98,000786
BELLS 2

7

12

17

22

27

32

37

43



48



53



58



63



68



71



Koos Alberts - Ik Zal Er Altijd Voor Je Zijn

BAS

♩ = 98,000786

BAS **2**

6

10

15

19

23

27

31

35

39

V.S.

2 43

BAS

T				
A				
B	0 0 2 2 0 0 2 0	0 0 0 0 0 0 0	4 5 5 0 0 5 5 0 5	2 2 2 2 2 2 2

47

T				
A				
B	0 0 2 2 0 0 2 0	0 0 0 0 0 0 0	4 5 5 0 5 3 3 3 3	5 5 0 0 5 5 0 5

51

T				
A				
B	0 0 2 2 0 0 2 0	0 0 0 0 0 0 0	4 5 5 0 0 5 5 0 5	2 2 2 2 2 2 2

55

T				
A				
B	0 0 2 2 0 0 2 0	0 0 0 0 0 0 0	4 5 5 0 5 3 3 4 4	5 0

59

T				
A				
B	2 2 4 4 2 2 4 0	2 2 ? ? 2 2 ? 2	0 0 2 2 0 0 2 0	4 4 ? ? 4 4 ? 4

63

T				
A				
B	2 2 4 4 2 2 4 0	2 2 ? ? 2 2 ? 2	0 0 2 0 5 5 0 0	0 0 2 2 0 0 2 0

67

T				
A				
B	2 2 4 4 2 2 4 2	2 2 ? ? 2 2 4 6	0 0 2 2 0 0 2 0	4 4 ? ? 4 4 ? 4

71

T				
A				
B	2 2 4 4 2 2 4 0	2 2 ? ? 2 2 4 6	0 0 2 0 5 5 6 6	0 ?

Koos Alberts - Ik Zal Er Altijd Voor Je Zijn

STRINGS 1

♩ = 98,000786
STRINGS 1

2

10

19

28

36

44

53

61

69

Koos Alberts - Ik Zal Er Altijd Voor Je Zijn

STRINGS 2

♩ = 98,000786
STRINGS 2

2

9

19

25

32

41

46

52

58

63

V.S.

2

STRINGS 2

67

Musical notation for strings 2, measures 67-70. The notation is on a single staff with a treble clef and a key signature of one sharp (F#). Measure 67 starts with a half note F#4, followed by a quarter note G#4, a quarter note A4, and a quarter note B4, all beamed together. Measure 68 continues with a quarter note B4, a quarter note C#5, a quarter note D5, and a quarter note E5, all beamed together. Measure 69 has a half note F#4, followed by a quarter rest, and then a quarter note G#4. Measure 70 has a quarter note A4, a quarter note B4, a quarter note C#5, and a quarter note D5, all beamed together.

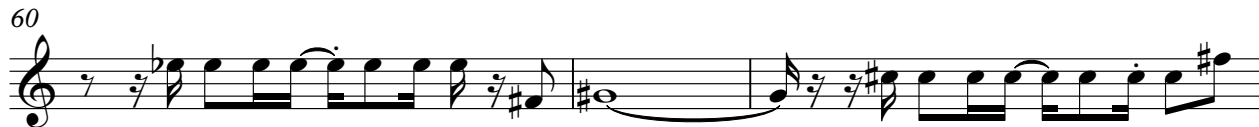
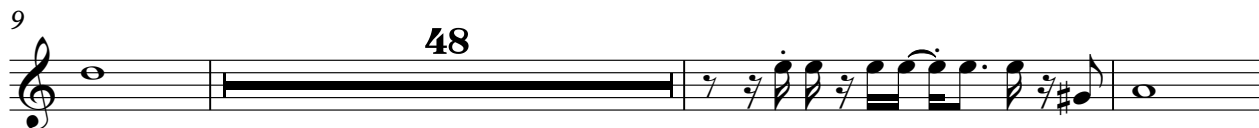
71

Musical notation for strings 2, measures 71-74. The notation is on a single staff with a treble clef and a key signature of one sharp (F#). Measure 71 starts with a quarter rest, followed by a quarter note F#4, a quarter note G#4, and a quarter note A4, all beamed together. Measure 72 has a half note B4, followed by a quarter note C#5, a quarter note D5, and a quarter note E5, all beamed together. Measure 73 has a quarter note F#4, a quarter note G#4, a quarter note A4, and a quarter note B4, all beamed together. Measure 74 has a quarter note C#5, a quarter note D5, a quarter note E5, and a quarter note F#5, all beamed together.

SOLO GITA

Koos Alberts - Ik Zal Er Altijd Voor Je Zijn

♩ = 98,000786
SOLO GITA



FLUTE

Koos Alberts - Ik Zal Er Altijd Voor Je Zijn

♩ = 98,000786
FLUTE 2

7

11 8

22 8

26

30

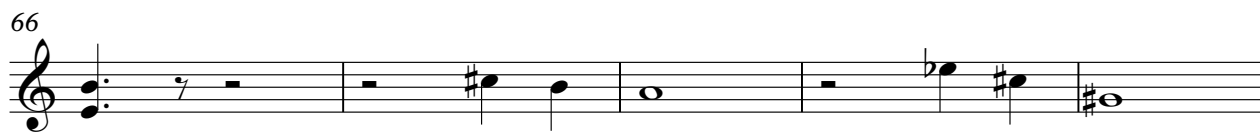
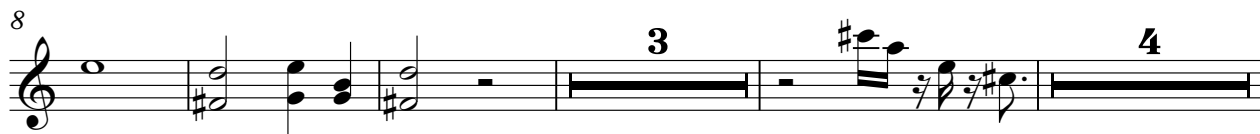
33 8

Musical score for Flute, measures 43-72. The score is written in treble clef and consists of ten staves of music. The key signature is one sharp (F#). The music features a complex melodic line with many slurs and ties. Measure 43 starts with a rest, followed by a series of eighth notes. Measure 46 begins with a sixteenth-note triplet. Measure 49 contains a sixteenth-note triplet. Measure 53 features a sixteenth-note triplet. Measure 56 has a sixteenth-note triplet. Measure 59 contains two sixteenth-note triplets. Measure 62 has a sixteenth-note triplet. Measure 66 has a sixteenth-note triplet. Measure 69 has a sixteenth-note triplet. Measure 72 has a sixteenth-note triplet. The score ends with a double bar line at the end of measure 72.

Koos Alberts - Ik Zal Er Altijd Voor Je Zijn

DUB KOOR

♩ = 98,000786
DUB KOOR



71

