

Kris Kristofferson - On The Road Again

♩ = 120,000000

Guitar

Guitar

Guitar

4

Drums

Guitar

Guitar

Banjo

Bass

2

5

Drums

Guitar

Guitar

Banjo

Bass

Detailed description: This system contains measures 5 and 6. The Drums part features a steady rhythm with eighth notes and quarter notes. The two upper Guitar staves play complex, fast-moving melodic lines with many triplets and slurs. The Banjo part is a driving, rhythmic accompaniment with frequent triplet patterns and slurs. The Bass part provides a simple, steady accompaniment with quarter notes.

6

Drums

Guitar

Guitar

Guitar

Guitar

Banjo

Bass

Detailed description: This system contains measures 7 and 8. The Drums part continues with a consistent rhythmic pattern. The two upper Guitar staves continue with intricate melodic lines, including triplets and slurs. The third Guitar staff plays a more sustained, harmonic accompaniment. The fourth Guitar staff has a long, sustained note with a slur. The Banjo part features a complex rhythmic pattern with many triplets and slurs. The Bass part continues with a steady accompaniment.

7

Drums

Guitar

Guitar

Guitar

Guitar

Banjo

Bass

Detailed description: This block contains the musical notation for measures 7 and 8. It features six staves: Drums, four Guitars, Banjo, and Bass. Measure 7 is marked with a '7' at the beginning. The Drums staff shows a sequence of eighth and sixteenth notes. The four Guitars staves contain various melodic and harmonic lines, including triplets and slurs. The Banjo staff has a complex rhythmic pattern with many accidentals and slurs. The Bass staff provides a simple harmonic accompaniment.

8

Drums

Guitar

Guitar

Guitar

Guitar

Banjo

Bass

Detailed description: This block contains the musical notation for measures 9 through 12. It features the same six staves as the previous block. Measure 9 is marked with an '8' at the beginning. The notation continues with similar patterns for all instruments, including complex rhythmic figures in the Banjo and melodic lines in the Guitars.

9

Drums

Guitar

Guitar

Guitar

Guitar

Banjo

Bass

Detailed description: This block contains the musical notation for measures 9 and 10. It features six staves: Drums, four Guitars, Banjo, and Bass. Measure 9 starts with a double bar line. The Drums staff shows a sequence of notes. The four Guitars staves have complex chordal and melodic lines with various accidentals and ties. The Banjo staff includes fret numbers (0, 4, 1, 6, 2, 6, 2) and a slash with a question mark. The Bass staff has a simple line of notes.

10

Drums

Guitar

Guitar

Guitar

Guitar

Banjo

Bass

Detailed description: This block contains the musical notation for measures 11 and 12. It features six staves: Drums, four Guitars, Banjo, and Bass. Measure 11 starts with a double bar line. The Drums staff continues with a sequence of notes. The four Guitars staves have complex chordal and melodic lines with various accidentals and ties. The Banjo staff includes fret numbers (6, 2, 4, 4, 2, 4, 4, 2, 4, 2, 6, 6) and a slash with a question mark. The Bass staff has a simple line of notes.

11

Drums

Guitar

Guitar

Guitar

Banjo

Bass

Detailed description: This musical score block covers measures 11 and 12. It features five staves: Drums, three Guitars, Banjo, and Bass. The Drums staff shows a simple rhythmic pattern with quarter and eighth notes. The three Guitars staves are filled with complex chordal textures, including many beamed eighth notes and sixteenth notes, with some notes tied across measures. The Banjo staff includes a guitar-style tab with fret numbers (0, 2, 4, 5, 6) and slash marks. The Bass staff provides a simple bass line with quarter notes.

12

Drums

Guitar

Guitar

Guitar

Banjo

Bass

Detailed description: This musical score block covers measures 12 and 13. It features five staves: Drums, three Guitars, Banjo, and Bass. The Drums staff continues the rhythmic pattern from the previous block. The three Guitars staves continue with complex chordal textures, including many beamed eighth notes and sixteenth notes, with some notes tied across measures. The Banjo staff includes a guitar-style tab with fret numbers (2, 6, 4, 2, 6, 6, 2, 4, 4, 2, 6, 6, 4, 2) and slash marks. The Bass staff provides a simple bass line with quarter notes.

13

Drums

Guitar

Guitar

Guitar

Guitar

Banjo

Bass

Detailed description: This block contains the musical notation for measures 13 and 14. It features six staves: Drums, two Guitars (top and middle), a third Guitar (bottom), Banjo, and Bass. The Drums staff shows a rhythmic pattern with eighth and quarter notes. The top Guitar staff has a treble clef and a key signature of one sharp (F#), with a complex melodic line. The middle Guitar staff has a treble clef and a key signature of one flat (Bb), with a bass line featuring triplets. The bottom Guitar staff has a treble clef and a key signature of one sharp (F#), with a sustained chord. The Banjo staff has a treble clef and a key signature of one sharp (F#), with a complex rhythmic pattern including triplets and sixteenth notes. The Bass staff has a bass clef and a key signature of one sharp (F#), with a simple bass line.

14

Drums

Guitar

Guitar

Guitar

Guitar

Banjo

Bass

Detailed description: This block contains the musical notation for measures 14 and 15. It features six staves: Drums, two Guitars (top and middle), a third Guitar (bottom), Banjo, and Bass. The Drums staff shows a rhythmic pattern with eighth and quarter notes. The top Guitar staff has a treble clef and a key signature of one sharp (F#), with a complex melodic line. The middle Guitar staff has a treble clef and a key signature of one flat (Bb), with a bass line featuring triplets. The bottom Guitar staff has a treble clef and a key signature of one sharp (F#), with a sustained chord. The Banjo staff has a treble clef and a key signature of one sharp (F#), with a complex rhythmic pattern including triplets and sixteenth notes. The Bass staff has a bass clef and a key signature of one sharp (F#), with a simple bass line.

15

Drums

Guitar

Guitar

Guitar

Guitar

Banjo

Bass

Detailed description: This system contains measures 15 and 16. The drums play a consistent pattern of quarter notes. The guitar parts feature complex chordal textures with many accidentals. The banjo part is highly technical, featuring a sequence of fret numbers (0, 4, 7, 2, 2, 2, 2, 2, 2, 4, 4, 4, 0, 4, 7, 7, 4, 4, 4, 0, 4) with slurs and dots. The bass line provides a steady accompaniment with some triplet figures.

16

Drums

Guitar

Guitar

Guitar

Guitar

Banjo

Bass

Detailed description: This system contains measures 17 and 18. The drums continue their pattern. The guitar parts show more variation in chord voicings and some rests. The banjo part continues with fret numbers (4, 0, 0, 4, 4, 0, 4, 0, 2, 1, 0, 0, 0, 1, 2, 0, 1) and includes slurs and dots. The bass line maintains its accompaniment with a triplet figure.

17

Drums

Guitar

Guitar

Guitar

Guitar

Banjo

Bass

Detailed description: This block contains the musical notation for measures 17 and 18. It features six staves: Drums, four Guitars, Banjo, and Bass. Measure 17 starts with a double bar line. The Drums staff shows a sequence of eighth and sixteenth notes. The top two Guitar staves have complex melodic lines with triplets and slurs. The third Guitar staff has a long, sustained note. The fourth Guitar staff is mostly empty. The Banjo staff shows a rhythmic pattern with fret numbers 2, 1, 2, 4, 0, 2, 6, 2, 6, 0, 7, 4. The Bass staff has a simple bass line with a triplet of eighth notes.

18

Drums

Guitar

Guitar

Guitar

Banjo

Bass

Detailed description: This block contains the musical notation for measures 19 and 20. It features six staves: Drums, four Guitars, Banjo, and Bass. Measure 19 starts with a double bar line. The Drums staff shows a sequence of eighth and sixteenth notes. The top two Guitar staves have complex melodic lines with triplets and slurs. The third Guitar staff has a long, sustained note. The fourth Guitar staff is mostly empty. The Banjo staff shows a rhythmic pattern with fret numbers 5, 2, 4, 5, 2, 4, 0, 7, 4, 7, 0, 7, 4, 7. The Bass staff has a simple bass line with a triplet of eighth notes.

19

Drums

Guitar

Guitar

Guitar

Banjo

Bass

Detailed description: This block contains the musical notation for measures 19 and 20. It features six staves: Drums, three Guitars, Banjo, and Bass. The Drums staff shows a consistent rhythmic pattern of eighth notes. The top Guitar staff has a complex melodic line with triplets and slurs. The middle Guitar staff provides harmonic support with chords and triplets. The bottom Guitar staff plays sustained chords. The Banjo staff uses a 7/4 time signature with specific fretting numbers (5, 2, 4, 7, 0) and rhythmic markings. The Bass staff provides a simple bass line with quarter notes.

20

Drums

Guitar

Guitar

Guitar

Banjo

Bass

Detailed description: This block contains the musical notation for measures 20 and 21. It features six staves: Drums, three Guitars, Banjo, and Bass. The Drums staff continues the rhythmic pattern. The top Guitar staff has a melodic line with a triplet and a slur. The middle Guitar staff has a melodic line with a slur. The bottom Guitar staff has a long, sustained chord in the first half of the measure. The Banjo staff uses a 7/4 time signature with fretting numbers (4, 2, 2, 7, 6, 7, 4, 2, 2, 4, 2, 2) and rhythmic markings. The Bass staff provides a simple bass line with quarter notes.

21

Drums

Guitar

Guitar

Guitar

Banjo

Bass

Detailed description: This system contains measures 21 through 24. The drums play a consistent pattern of quarter notes on the snare and bass drum. The top guitar staff features a melodic line with eighth notes and a triplet of eighth notes in measure 23. The middle guitar staff provides harmonic support with chords and a triplet in measure 23. The bottom guitar staff plays sustained chords. The banjo part uses a 5/2/4 fingering pattern. The bass line consists of quarter notes.

22

Drums

Guitar

Guitar

Guitar

Banjo

Bass

Detailed description: This system contains measures 25 through 28. The drums continue with the same pattern. The top guitar staff has a melodic line with eighth notes. The middle guitar staff features a triplet of eighth notes in measure 25 and continues with chords. The bottom guitar staff plays sustained chords. The banjo part uses a 5/2/4 fingering pattern. The bass line consists of quarter notes.

23

Drums

Guitar

Guitar

Guitar

Guitar

Banjo

Bass

Detailed description: This system contains measures 23 and 24. The Drums part features a consistent rhythmic pattern of quarter notes. The first Guitar staff has a complex melodic line with a triplet in measure 24. The second Guitar staff provides harmonic support with chords. The third Guitar staff has a long sustained chord in measure 23. The Banjo part uses a 4/2 time signature with a specific rhythmic pattern. The Bass part provides a simple harmonic foundation with quarter notes.

24

Drums

Guitar

Guitar

Guitar

Guitar

Banjo

Bass

Detailed description: This system contains measures 24 and 25. The Drums part continues with the same rhythmic pattern. The first Guitar staff continues the melodic line from measure 23, including a triplet. The second Guitar staff continues with harmonic support. The third Guitar staff has a long sustained chord in measure 24. The Banjo part uses a 5/4 time signature with a specific rhythmic pattern. The Bass part provides a simple harmonic foundation with quarter notes.

25

Drums

Guitar

Guitar

Guitar

Guitar

Banjo

Bass

Detailed description: This system contains measures 25 through 28. The drums play a consistent pattern of quarter notes. The guitar parts are complex, with multiple staves showing various chord voicings and melodic lines. The banjo part features a mix of eighth and sixteenth notes with fret numbers 4, 7, and 2 indicated. The bass line consists of simple quarter notes.

26

Drums

Guitar

Guitar

Guitar

Guitar

Banjo

Bass

Detailed description: This system contains measures 29 through 32. The drums continue with a similar pattern. The guitar parts are highly intricate, with many beamed notes and complex chord structures. The banjo part shows a progression of chords with fret numbers 4, 8, and 6. The bass line continues with quarter notes, including some chromatic movement.

28

Drums

Guitar

Guitar

Guitar

Guitar

Banjo

Bass

29

Drums

Guitar

Guitar

Guitar

Guitar

Banjo

Bass

31

Drums

Guitar

Guitar

Guitar

Guitar

Banjo

Bass

Detailed description: This block contains the musical notation for measures 31 and 32. It features six staves: Drums, four Guitars, Banjo, and Bass. Measure 31 is marked with a double bar line. The Drums staff shows a sequence of eighth and sixteenth notes. The four Guitars staves contain complex melodic and harmonic lines with various articulations like slurs and accents. The Banjo staff uses a rhythmic notation with numbers 4, 2, 2, 7, and 2, indicating fret positions and rhythmic patterns. The Bass staff provides a simple harmonic accompaniment with quarter and eighth notes.

32

Drums

Guitar

Guitar

Guitar

Banjo

Bass

Detailed description: This block contains the musical notation for measures 33 through 36. It features the same six staves as the previous block. Measure 32 is marked with a double bar line. The Drums staff continues with a similar rhythmic pattern. The Guitars staves show more intricate melodic lines with many slurs and ties. The Banjo staff has a more complex rhythmic notation with numbers 0, 6, 4, 2, 6, 6, 6, 6, 2, 2, 2, 2, 2, 2, 2, 2, 0, 6, 6, and 2, indicating fret positions and rhythmic patterns. The Bass staff includes a triplet of eighth notes in the first measure of this section.

33

Drums

Guitar

Guitar

Guitar

Banjo

Bass

Detailed description: This system contains measures 33 through 36. The Drums part features a consistent rhythmic pattern of quarter notes. The three Guitar staves are highly active, with the top staff playing a complex melodic line with many beamed notes and slurs. The middle and bottom guitar staves provide harmonic support with chords and single notes. The Banjo part is written in a standard notation with fret numbers (0, 2, 4, 5, 6) and includes some question marks, possibly indicating uncertain or improvised notes. The Bass part provides a steady accompaniment with a mix of quarter and eighth notes.

34

Drums

Guitar

Guitar

Guitar

Banjo

Bass

Detailed description: This system contains measures 37 through 40. The Drums part continues with the same rhythmic pattern. The Guitar parts show more complex melodic and harmonic textures, with the top staff featuring a prominent melodic line. The Banjo part includes specific fret numbers such as 2, 4, 6, 8, 10, 11, and 4, indicating a more intricate fretboard technique. The Bass part continues with a steady accompaniment.

35

Drums

Guitar

Guitar

Guitar

Guitar

Banjo

Bass

Detailed description: This system of musical notation covers measures 35 and 36. It includes staves for Drums, four Guitars, Banjo, and Bass. The Drums staff shows a rhythmic pattern with eighth and sixteenth notes. The four Guitars staves feature various melodic and harmonic lines, including triplets and slurs. The Banjo staff contains a complex rhythmic pattern with fret numbers (2, 3, 4, 6) and slurs. The Bass staff provides a low-frequency accompaniment with notes and rests.

36

Drums

Guitar

Guitar

Guitar

Guitar

Banjo

Bass

Detailed description: This system of musical notation covers measures 36 and 37. It includes staves for Drums, four Guitars, Banjo, and Bass. The Drums staff continues the rhythmic pattern. The four Guitars staves show further melodic and harmonic development. The Banjo staff features a complex rhythmic pattern with fret numbers (0, 4, 7) and slurs, including some notes with question marks. The Bass staff continues the low-frequency accompaniment.

37

This musical score block covers measures 37 through 40. It includes staves for Drums, four Guitars, Banjo, and Bass. The Drums part shows a consistent rhythmic pattern. The four Guitars parts feature various melodic and harmonic lines, with some using complex chordal structures. The Banjo part includes fret numbers (0, 2, 4, 1, 2, 2, 2, 2) and a 9th fret position. The Bass part provides a steady low-end accompaniment.

38

This musical score block covers measures 38 through 41. It includes staves for Drums, four Guitars, Banjo, and Bass. The Drums part continues with the same rhythmic pattern. The four Guitars parts show more complex melodic lines, including a triplet in the top guitar staff. The Banjo part features fret numbers (2, 2, 2, 2, 0, 0, 0, 0, 5, 4, 2, 2, 2, 6, 2, 2) and a 9th fret position. The Bass part continues with its accompaniment.

39

Drums

Guitar

Guitar

Guitar

Guitar

Banjo

Bass

40

Drums

Guitar

Guitar

Guitar

Banjo

Bass

41

Drums

Guitar

Guitar

Guitar

Guitar

Banjo

Bass

Detailed description: This system contains measures 41 and 42. The Drums part shows a consistent rhythmic pattern. The four Guitar parts feature various chordal textures and melodic lines, with some using slash notation for complex or rapid passages. The Banjo part includes a detailed fretboard diagram with fingerings (1, 3, 4, 6, 5) and a question mark indicating an uncertain note. The Bass part provides a steady harmonic foundation.

42

Drums

Guitar

Guitar

Guitar

Guitar

Banjo

Bass

Detailed description: This system contains measures 43 and 44. The Drums part continues the rhythmic pattern. The four Guitar parts show more complex melodic and harmonic development. The Banjo part features a sequence of notes with fingerings (6, 1, 4, 6, 1, 4, 6, 6, 4, 4, 2, 6) and a question mark. The Bass part continues its harmonic support.

43

Drums

Guitar

Guitar

Guitar

Guitar

Banjo

Bass

Detailed description: This system contains measures 43 through 47. The drums play a steady pattern of quarter notes. The guitar parts feature a mix of chords and melodic lines, with some notes tied across measures. The banjo part is highly rhythmic, using a mix of open strings and fretted notes with various fingerings (0, 4, 7) and some question marks. The bass line provides a simple harmonic foundation with quarter notes.

44

Drums

Guitar

Guitar

Guitar

Guitar

Banjo

Bass

Detailed description: This system contains measures 48 through 52. The drums continue with a similar pattern. The guitar parts are more complex, with many chords and some melodic runs. The banjo part is very intricate, featuring many fretted notes with specific fingerings (e.g., 2-2, 4-4, 0-1, 1-1, 7-7, 2-1, 2-2, 2-2, 2-6, 4) and some question marks. The bass line remains simple with quarter notes.

46

Drums

Guitar

Guitar

Guitar

Guitar

Banjo

Bass

Detailed description: This system contains measures 46 and 47. The Drums part features a consistent pattern of eighth notes. The first two Guitar staves play complex, multi-voice chords with many notes, some held across measures. The third Guitar staff plays a simpler chordal accompaniment. The fourth Guitar staff is mostly silent with occasional notes. The Banjo part uses a 2/4 time signature and includes fret numbers (0, 5, 2, 4, 7) and slash marks indicating rhythmic patterns. The Bass part provides a steady accompaniment with quarter notes.

47

Drums

Guitar

Guitar

Guitar

Guitar

Banjo

Bass

Detailed description: This system contains measures 48 and 49. The Drums part continues with eighth notes. The first two Guitar staves play complex chords, with the second staff showing some melodic movement. The third Guitar staff continues with chordal accompaniment. The fourth Guitar staff remains mostly silent. The Banjo part uses a 2/4 time signature and includes fret numbers (5, 2, 4, 5, 2, 4, 5, 2, 4, 4, 7) and slash marks. The Bass part continues with quarter notes.

48

Drums

Guitar

Guitar

Guitar

Guitar

Banjo

Bass

Detailed description: This system contains measures 48 through 51. The Drums part features a consistent rhythmic pattern of eighth notes. The two upper Guitar staves play a complex, melodic line with many beamed notes and ties. The lower two Guitar staves play sustained chords, with the bottom-most staff using a capo (indicated by a sharp sign) and holding notes for long durations. The Banjo part consists of a steady eighth-note accompaniment with fret numbers 4, 2, 7, 6, 4, 2, 4, 2 written above the notes. The Bass part provides a simple harmonic foundation with quarter notes.

49

Drums

Guitar

Guitar

Guitar

Guitar

Banjo

Bass

Detailed description: This system contains measures 52 through 55. The Drums part continues with the same eighth-note pattern. The two upper Guitar staves continue their melodic line. The lower two Guitar staves play sustained chords, with the bottom-most staff using a capo (indicated by a sharp sign) and holding notes for long durations. The Banjo part continues with the eighth-note accompaniment, with fret numbers 5, 2, 5, 0, 7, 4, 0, 7 written above the notes. The Bass part continues with a simple harmonic foundation, including a sharp sign on the final note.

50

Drums

Guitar

Guitar

Guitar

Guitar

Banjo

Bass

Detailed description: This system covers measures 50 to 54. The drums play a consistent pattern of quarter notes. The four guitar staves feature various textures: the top staff has a melodic line with slurs and ties; the second staff has a similar melodic line; the third staff plays chords with slurs; the fourth staff has a long, sustained chord. The Banjo part uses a 4/4 time signature with a 5-2-4 fretting pattern and a 7/4 strumming pattern. The Bass line consists of quarter notes.

51

Drums

Guitar

Guitar

Guitar

Banjo

Bass

Detailed description: This system covers measures 55 to 59. The drums continue with the same pattern. The top guitar staff has a melodic line with a triplet of eighth notes. The second guitar staff has a similar melodic line. The third guitar staff has a long, sustained chord. The Banjo part uses a 4/4 time signature with a 7-6-7 fretting pattern and a 7/7 strumming pattern. The Bass line consists of quarter notes.

52

Drums

Guitar

Guitar

Guitar

Banjo

Bass

Detailed description: This system of musical notation covers measures 52 and 53. It features six staves: Drums, three Guitars, Banjo, and Bass. The Drums staff shows a consistent rhythmic pattern of eighth notes. The three Guitars staves contain complex melodic and harmonic lines, including triplets and long sustained notes. The Banjo staff uses a 7/6/7 fretting pattern with a slash indicating a strum. The Bass staff provides a simple harmonic accompaniment with quarter notes.

53

Drums

Guitar

Guitar

Guitar

Banjo

Bass

Detailed description: This system of musical notation covers measures 53 and 54. It features six staves: Drums, three Guitars, Banjo, and Bass. The Drums staff continues the rhythmic pattern. The three Guitars staves show more intricate melodic development, with triplets and complex chordal structures. The Banjo staff uses a 7/6/7 fretting pattern. The Bass staff continues with a simple harmonic accompaniment.

54

Drums

Guitar

Guitar

Guitar

Guitar

Banjo

Bass

Detailed description: This system contains measures 54 and 55. The drums play a steady eighth-note pattern. The guitar parts are complex, featuring many beamed eighth notes and chords. The third guitar part has a triplet of eighth notes in measure 54. The banjo part uses a 7-4-7-4-7-4-8-8-8-8 fretting pattern with a consistent rhythmic pattern. The bass line consists of a simple eighth-note sequence.

56

Drums

Guitar

Guitar

Guitar

Guitar

Banjo

Bass

Detailed description: This system contains measures 56 and 57. The drums continue with the eighth-note pattern. The guitar parts show more sustained notes and chords. The banjo part uses a 8-6-9-6-8-6-9-6 fretting pattern. The bass line continues with the eighth-note sequence.

57

Drums

Guitar

Guitar

Guitar

Banjo

Bass

5 4 0 5 4 0 5 4 0 5 4 0

58

Drums

Guitar

Guitar

Guitar

Guitar

Banjo

Bass

5 2 4 5 2 4 5 4 6 5 4 6

59

Drums

Guitar

Guitar

Guitar

Banjo

Bass

Detailed description: This system contains measures 59 and 60. The Drums part features a consistent rhythmic pattern of eighth notes. The first Guitar part has a complex, fast-moving melodic line with many beamed notes and a triplet of eighth notes in measure 59. The second Guitar part plays a slower, more melodic line with a long slur over measures 59 and 60. The third Guitar part is mostly silent, with a few notes in measure 60. The Banjo part has a rhythmic pattern of eighth notes with various fret numbers (7, 6, 5, 4, 2) written above the staff. The Bass part provides a steady accompaniment with quarter notes.

61

Drums

Guitar

Guitar

Guitar

Banjo

Bass

Detailed description: This system contains measures 61 and 62. The Drums part continues with the same eighth-note pattern. The first Guitar part has a melodic line with some rests and a triplet of eighth notes in measure 61. The second Guitar part has a melodic line with a long slur over measures 61 and 62. The third Guitar part is mostly silent, with a few notes in measure 62. The Banjo part has a rhythmic pattern of eighth notes with various fret numbers (4, 7, 4, 4, 5, 5, 7, 7) written above the staff. The Bass part provides a steady accompaniment with quarter notes.

63

Drums

Guitar

Guitar

Guitar

Banjo

Bass

Detailed description: This system contains measures 63 and 64. The drums part features a steady rhythm with eighth and sixteenth notes. The guitar parts include complex chordal textures and melodic lines, with some parts featuring triplets and slurs. The banjo part is characterized by a driving eighth-note pattern with specific fretting (4, 2, 2, 7, 6, 7, 5, 2, 4) and a triplet in measure 64. The bass part provides a simple harmonic foundation with quarter notes.

64

Drums

Guitar

Guitar

Guitar

Banjo

Bass

Detailed description: This system contains measures 65 and 66. The drums part continues with a consistent rhythmic pattern. The guitar parts are more intricate, featuring a triplet in the second guitar part in measure 65. The banjo part has a complex fretting pattern (12, 9, 11, 12, 9, 11, 12, 9, 11, 7) and includes a triplet in measure 65. The bass part continues with a simple harmonic line.

Drums

Kris Kristofferson - On The Road Again

♩ = 120,000000

3

1

7

11

15

18

21

25

28

31

35

V.S.

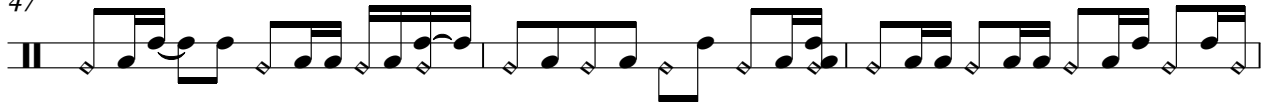
39



43



47



50



53



56



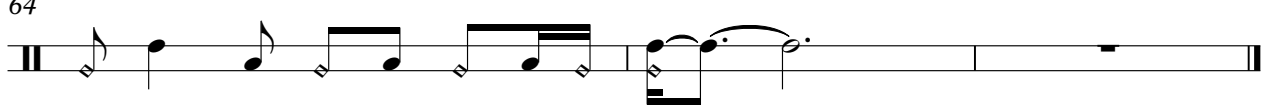
59



62



64



Kris Kristofferson - On The Road Again

Guitar

$\text{♩} = 120,000000$

3

5

6

7

8

10

12

13

14

15

V.S.

This image displays a guitar sheet music score for measures 17 through 29. The music is written in a single system on a treble clef staff. The key signature is one sharp (F#), and the time signature is 4/4. The score includes various musical notations such as chords, eighth notes, and triplets. Measure numbers 17, 19, 20, 21, 22, 23, 24, 25, 27, and 29 are explicitly labeled at the beginning of their respective lines. The notation features a mix of rhythmic patterns, including eighth-note runs and chordal textures. Some measures contain triplets, indicated by a '3' over a bracket. The piece concludes with a final chord in measure 29.

Musical score for guitar, measures 31-44. The score is written in treble clef with a key signature of one sharp (F#). It features a complex rhythmic pattern with many sixteenth and thirty-second notes. Measure 33 contains a large chordal structure with a long horizontal line above it. Measures 35, 36, 38, and 39 include triplets. Measure 40 has a triplet of eighth notes. Measure 42 has a triplet of eighth notes. Measure 44 ends with a double bar line and the text 'V.S.' to its right.

V.S.

This image displays a page of guitar sheet music, numbered 4, with the instrument specified as 'Guitar'. The music is written in a single system with ten staves, each corresponding to a measure number: 46, 47, 48, 50, 52, 53, 55, 57, 59, and 61. The notation is complex, featuring a variety of rhythmic patterns, including eighth and sixteenth notes, and rests. Chords are indicated by vertical lines with dots representing fingerings. Several measures contain triplets, marked with a '3' and a bracket. The key signature is one sharp (F#), and the time signature is 4/4. The music is presented in a standard staff format with a treble clef and a key signature of one sharp.

63

Musical notation for guitar measure 63, featuring a treble clef and a key signature of one sharp (F#). The melody consists of a series of eighth notes: F#4, G4, A4, B4, C5, D5, E5, F#5. The bass line consists of a series of eighth notes: D3, C3, B2, A2, G2, F#2, E2, D2. There are some ties and slurs in the notation. A triplet of eighth notes (F#4, G4, A4) is marked with a '3' at the end of the measure.

64

Musical notation for guitar measure 64, featuring a treble clef and a key signature of one sharp (F#). The melody consists of a series of eighth notes: F#4, G4, A4, B4, C5, D5, E5, F#5. The bass line consists of a series of eighth notes: D3, C3, B2, A2, G2, F#2, E2, D2. There are some ties and slurs in the notation.

Kris Kristofferson - On The Road Again

Guitar

♩ = 120,000000

5

9

12

15

18

21

26

29

33

36

V.S.

2

Guitar

39

41

44

48

52

55

58

62

64

Kris Kristofferson - On The Road Again

Guitar

♩ = 120,000000

2

7

11

15

19

23

27

31

35

39

V.S.



Kris Kristofferson - On The Road Again

Guitar

♩ = 120,000000

5

13

24

32

38

44

50

60

64

Kris Kristofferson - On The Road Again

Banjo

♩ = 120,000000

3

6

8

10

12

14

16

19

22

25

V.S.

28

31

33

35

37

39

41

43

45

48

51

Musical notation for exercise 51, consisting of two staves. The top staff has a treble clef and contains a sequence of notes with fret numbers 7, 6, 7, 6, 7, 6, 7, 6, 5, 4, 5, 4, 5, 4, 5, 4, 7, 6, 7, 6, 7, 6, 7, 6. The bottom staff has a bass clef and contains a sequence of notes with fret numbers 2, 2.

54

Musical notation for exercise 54, consisting of two staves. The top staff has a treble clef and contains a sequence of notes with fret numbers 4, 7, 4, 2, 4, 2, 8, 6, 8, 6, 8, 6, 8, 6, 8, 6, 8, 6, 8, 6, 8, 6, 8, 6. The bottom staff has a bass clef and contains a sequence of notes with fret numbers 2, 2, 2, 2, 2, 2, 6, 6, 6, 6, 6, 6, 6, 6, 6, 6, 6, 6, 6, 6, 6, 6, 6, 6.

57

Musical notation for exercise 57, consisting of two staves. The top staff has a treble clef and contains a sequence of notes with fret numbers 5, 4, 5, 4, 5, 4, 5, 4, 5, 4, 5, 4, 5, 4, 7, 6, 7, 6, 7, 6, 7, 6, 7, 6. The bottom staff has a bass clef and contains a sequence of notes with fret numbers 0, 0, 0, 0, 0, 0, 2, 2, 2, 2, 2, 2, 2, 2, 2, 2, 2, 2, 2, 2, 2, 2, 2, 2.

60

Musical notation for exercise 60, consisting of two staves. The top staff has a treble clef and contains a sequence of notes with fret numbers 5, 2, 5, 2, 5, 4, 5, 4, 4, 4, 5, 2, 5, 2, 5, 2, 7, 4, 5, 2, 4, 4, 7, 4, 7-5. The bottom staff has a bass clef and contains a sequence of notes with fret numbers 4, 4, 2.

63

Musical notation for exercise 63, consisting of two staves. The top staff has a treble clef and contains a sequence of notes with fret numbers 4, 7, 7, 5, 12, 12, 12, 12, 7. The bottom staff has a bass clef and contains a sequence of notes with fret numbers 2, 2.

Kris Kristofferson - On The Road Again

Bass

♩ = 120,000000

3



8



13



19



24



29



34



39



45



50



V.S.

2

Bass

55



60



63

