

Kristina Bach - Und Die Erde Steht Still

♩ = 118,001060

MELODY

OBOE

DRUMS

MARIMBA

STEEL GTR

FRETLESS

CHOIR AAHS

BRASS 1

SLOWSTRING

♩ = 118,001060

4

OBOE

DRUMS

MARIMBA

STEEL GTR

FRETLESS

SLOWSTRING



6

OBOE

DRUMS

MARIMBA

STEEL GTR

FRETLESS

SLOWSTRING

8

OBOE

DRUMS

MARIMBA

STEEL GTR

FRETLESS

SLOWSTRING



10

MELODY

OBOE

DRUMS

MARIMBA

STEEL GTR

FRETLESS

SLOWSTRING

12

MELODY

DRUMS

MARIMBA

STEEL GTR

FRETLESS

SLOWSTRING



14

MELODY

DRUMS

MARIMBA

STEEL GTR

FRETLESS

SLOWSTRING

16

MELODY

DRUMS

MARIMBA

STEEL GTR

FRETLESS

SLOWSTRING



18

MELODY

DRUMS

MARIMBA

STEEL GTR

FRETLESS

SLOWSTRING

24

MELODY

DRUMS

MARIMBA

STEEL GTR

FRETLESS

SLOWSTRING



26

MELODY

DRUMS

MARIMBA

STEEL GTR

FRETLESS

SLOWSTRING

27

MELODY

DRUMS

MARIMBA

STEEL GTR

FRETLESS

CHOIR AAHS

SLOWSTRING

28

MELODY

DRUMS

MARIMBA

STEEL GTR

FRETLESS

CHOIR AAHS

BRASS 1

SLOWSTRING

29

MELODY

DRUMS

MARIMBA

STEEL GTR

FRETLESS

CHOIR AAHS

BRASS 1

SLOWSTRING

The image shows a musical score for page 29, featuring seven staves. The MELODY staff is in treble clef with a 7/8 time signature, showing a melodic line with a sharp sign. The DRUMS staff uses a drum set notation with various symbols for snare, cymbal, and bass drum. The MARIMBA staff is in grand staff (treble and bass clefs), with a rhythmic pattern of eighth notes. The STEEL GTR staff is in treble clef with a key signature of one sharp (F#), showing a melodic line with chords. The FRETLESS staff is in bass clef, showing a melodic line with a sharp sign. The CHOIR AAHS staff is in treble clef, showing a vocal line with a sharp sign. The BRASS 1 staff is in treble clef with a key signature of one sharp (F#), showing a melodic line with a sharp sign. The SLOWSTRING staff is in bass clef with a key signature of one sharp (F#), showing a sustained chord with a sharp sign.

31

MELODY

DRUMS

MARIMBA

STEEL GTR

FRETLESS

CHOIR AAHS

BRASS 1

SLOWSTRING

33

MELODY

DRUMS

MARIMBA

STEEL GTR

FRETLESS

CHOIR AAHS

BRASS 1

SLOWSTRING

35

MELODY

DRUMS

MARIMBA

STEEL GTR

FRETLESS

CHOIR AAHS

BRASS 1

SLOWSTRING

36

MELODY

DRUMS

MARIMBA

STEEL GTR

FRETLESS

CHOIR AAHS

BRASS 1

SLOWSTRING

38

MELODY

DRUMS

MARIMBA

STEEL GTR

FRETLESS

CHOIR AAHS

BRASS 1

SLOWSTRING

Detailed description of the musical score: The score is for measures 38-41. MELODY: Measure 38 has a quarter rest, followed by a whole rest in measures 39-41. DRUMS: Features a complex rhythmic pattern with various drum sounds (represented by 'x' marks) and accents. MARIMBA: Plays a steady eighth-note accompaniment with a consistent interval. STEEL GTR: Plays a melodic line with slurs, primarily in the upper register. FRETLESS: Plays a simple bass line with a few notes and a slur. CHOIR AAHS: Similar to the melody, it has a quarter rest in measure 38 and whole rests in measures 39-41. BRASS 1: Provides harmonic support with a series of chords and notes. SLOWSTRING: A single staff with a sustained chord across all measures.

39

MELODY

DRUMS

MARIMBA

STEEL GTR

FRETLESS

CHOIR AAHS

BRASS 1

SLOWSTRING

41

MELODY

DRUMS

MARIMBA

STEEL GTR

FRETLESS

CHOIR AAHS

SLOWSTRING



43

DRUMS

MARIMBA

STEEL GTR

FRETLESS

BRASS 1

SLOWSTRING

45

MELODY

DRUMS

MARIMBA

STEEL GTR

FRETLESS

BRASS 1

SLOWSTRING



47

MELODY

DRUMS

MARIMBA

STEEL GTR

FRETLESS

SLOWSTRING

49

MELODY

DRUMS

MARIMBA

STEEL GTR

FRETLESS

SLOWSTRING



51

MELODY

DRUMS

MARIMBA

STEEL GTR

FRETLESS

SLOWSTRING

53

MELODY

DRUMS

MARIMBA

STEEL GTR

FRETLESS

SLOWSTRING



55

MELODY

DRUMS

MARIMBA

STEEL GTR

FRETLESS

SLOWSTRING

57

MELODY

DRUMS

MARIMBA

STEEL GTR

FRETLESS

SLOWSTRING



59

MELODY

DRUMS

MARIMBA

STEEL GTR

FRETLESS

SLOWSTRING

61

MELODY

DRUMS

MARIMBA

STEEL GTR

FRETLESS

CHOIR AAHS

SLOWSTRING

62

MELODY

DRUMS

MARIMBA

STEEL GTR

FRETLESS

CHOIR AAHS

BRASS 1

SLOWSTRING

63

MELODY

DRUMS

MARIMBA

STEEL GTR

FRETLESS

CHOIR AAHS

BRASS 1

SLOWSTRING

Detailed description of the musical score: The score is for page 22, measures 63 and 64. The MELODY part begins with a 7-measure rest, then plays a melodic line: quarter note G4, quarter note A4, quarter note B4, quarter note C5, quarter note D5, quarter note E5, quarter note F#5, quarter note G5, quarter note F#5, quarter note E5, quarter note D5, quarter note C5, quarter note B4, quarter note A4, quarter note G4. The DRUMS part features a complex rhythmic pattern with many 'x' marks, indicating a dense drum part. The MARIMBA part has a bass line with chords and a treble line with eighth notes. The STEEL GTR part plays a melodic line with chords. The FRETLESS part plays a melodic line. The CHOIR AAHS part has a vocal line. The BRASS 1 part has a few notes. The SLOWSTRING part has a sustained chord.

65

MELODY

DRUMS

MARIMBA

STEEL GTR

FRETLESS

CHOIR AAHS

BRASS 1

SLOWSTRING

67

MELODY

DRUMS

MARIMBA

STEEL GTR

FRETLESS

CHOIR AAHS

BRASS 1

SLOWSTRING

69

MELODY

DRUMS

MARIMBA

STEEL GTR

FRETLESS

CHOIR AAHS

BRASS 1

SLOWSTRING

Detailed description of the musical score: The score is for measures 69-72. MELODY (treble clef) starts with a quarter rest, followed by quarter notes G4, A4, B4, and C5, with a slur over the last three notes. DRUMS (drum notation) features a complex rhythmic pattern with snare, tom, and cymbal hits. MARIMBA (bass clef) plays a series of chords with a rhythmic pattern of quarter notes and rests. STEEL GTR (treble clef) has a melodic line with a sharp sign on the second note, a slur over the first four notes, and a triplet of eighth notes at the end. FRETLESS (bass clef) plays a simple melodic line with a slur over the last two notes. CHOIR AAHS (treble clef) has a melodic line similar to MELODY. BRASS 1 (treble clef) has a whole rest. SLOWSTRING (bass clef) has a long note with a sharp sign.

70

MELODY

DRUMS

MARIMBA

STEEL GTR

FRETLESS

CHOIR AAHS

BRASS 1

SLOWSTRING

72

MELODY

DRUMS

MARIMBA

STEEL GTR

FRETLESS

CHOIR AAHS

BRASS 1

SLOWSTRING

Detailed description of the musical score: The score is for page 27, starting at measure 72. It features eight staves. The MELODY staff (treble clef) contains a whole rest. The DRUMS staff (percussion clef) shows a complex rhythmic pattern with accents and slurs. The MARIMBA staff (treble clef) plays a sequence of eighth notes with rests. The STEEL GTR staff (treble clef) has a melodic line with slurs. The FRETLESS staff (bass clef) has a bass line with a slur. The CHOIR AAHS staff (treble clef) contains a whole rest. The BRASS 1 staff (treble clef) plays a sequence of chords. The SLOWSTRING staff (treble clef) has a long, sustained note.

73

MELODY

DRUMS

MARIMBA

STEEL GTR

FRETLESS

CHOIR AAHS

BRASS 1

SLOWSTRING



75

MELODY

DRUMS

MARIMBA

STEEL GTR

FRETLESS

CHOIR AAHS

SLOWSTRING

76

MELODY

DRUMS

MARIMBA

STEEL GTR

FRETLESS

CHOIR AAHS

BRASS 1

SLOWSTRING



77

DRUMS

MARIMBA

STEEL GTR

FRETLESS

BRASS 1

SLOWSTRING

78

MELODY

DRUMS

MARIMBA

STEEL GTR

FRETLESS

SLOWSTRING



79

MELODY

DRUMS

MARIMBA

STEEL GTR

FRETLESS

SLOWSTRING

81

MELODY

DRUMS

MARIMBA

STEEL GTR

FRETLESS

BRASS 1

SLOWSTRING



82

MELODY

DRUMS

MARIMBA

STEEL GTR

FRETLESS

CHOIR AAHS

SLOWSTRING

83

MELODY

DRUMS

MARIMBA

STEEL GTR

FRETLESS

CHOIR AAHS

SLOWSTRING



85

MELODY

DRUMS

MARIMBA

STEEL GTR

FRETLESS

CHOIR AAHS

SLOWSTRING

86

MELODY

DRUMS

MARIMBA

STEEL GTR

FRETLESS

CHOIR AAHS

BRASS 1

SLOWSTRING

88

MELODY

DRUMS

MARIMBA

STEEL GTR

FRETLESS

CHOIR AAHS

BRASS 1

SLOWSTRING



90

MELODY

DRUMS

MARIMBA

STEEL GTR

FRETLESS

CHOIR AAHS

SLOWSTRING

92

MELODY

Musical staff for MELODY, featuring a treble clef and a key signature of one sharp (F#). The staff contains a whole rest followed by a half rest, indicating a silent melody for this section.

DRUMS

Musical staff for DRUMS, featuring a double bar line clef. The staff shows a complex rhythmic pattern with various note values, rests, and accents, including a prominent snare drum pattern.

MARIMBA

Musical staff for MARIMBA, featuring a bass clef and a key signature of one sharp (F#). The staff contains a series of eighth notes with stems pointing up, indicating a rhythmic accompaniment.

STEEL GTR

Musical staff for STEEL GTR, featuring a treble clef and a key signature of one sharp (F#). The staff contains a melodic line with a mix of eighth and quarter notes, some with ties.

FRETLESS

Musical staff for FRETLESS, featuring a bass clef and a key signature of one sharp (F#). The staff contains a few notes, including a half note and a quarter note, with a slur over them.

CHOIR AAHS

Musical staff for CHOIR AAHS, featuring a treble clef and a key signature of one sharp (F#). The staff contains a whole rest followed by a half rest, indicating a silent choir part.

BRASS 1

Musical staff for BRASS 1, featuring a treble clef and a key signature of one sharp (F#). The staff contains a series of chords and notes, including a half note and a quarter note.

SLOWSTRING

Musical staff for SLOWSTRING, featuring a treble clef and a key signature of one sharp (F#). The staff contains a long, horizontal line with a slur, indicating a sustained or slow-moving string part.

93

MELODY

DRUMS

MARIMBA

STEEL GTR

FRETLESS

CHOIR AAHS

BRASS 1

SLOWSTRING

94

MELODY

DRUMS

MARIMBA

STEEL GTR

FRETLESS

CHOIR AAHS

BRASS 1

SLOWSTRING

96

MELODY

DRUMS

MARIMBA

STEEL GTR

FRETLESS

CHOIR AAHS

BRASS 1

SLOWSTRING

Detailed description of the musical score for page 38, measures 96-99:

- MELODY:** Treble clef, key signature of one sharp (F#). Measure 96 starts with a quarter rest, followed by a quarter rest in measure 97, and a whole rest in measure 98. Measure 99 contains a whole rest.
- DRUMS:** Drum notation with a snare drum (S) and a bass drum (D). The pattern consists of a steady eighth-note accompaniment with snare hits on the 2nd and 4th beats of each measure.
- MARIMBA:** Treble clef, key signature of one sharp. It features a steady eighth-note accompaniment with chords, primarily consisting of the notes F# and C.
- STEEL GTR:** Treble clef, key signature of one sharp. It plays a melodic line with slurs, primarily using the notes F# and C, with some chromatic movement.
- FRETLESS:** Bass clef, key signature of one sharp. It plays a simple bass line with notes F# and C, including a half-note chord in measure 98.
- CHOIR AAHS:** Treble clef, key signature of one sharp. It consists of a quarter rest in measure 96, followed by a quarter rest in measure 97, and a whole rest in measure 98. Measure 99 contains a whole rest.
- BRASS 1:** Treble clef, key signature of one sharp. It provides harmonic accompaniment with chords, primarily consisting of the notes F# and C.
- SLOWSTRING:** Treble clef, key signature of one sharp. It features a sustained chord consisting of the notes F# and C, held throughout the entire measure.

97

MELODY

DRUMS

MARIMBA

STEEL GTR

FRETLESS

CHOIR AAHS

BRASS 1

SLOWSTRING



99

MELODY

DRUMS

MARIMBA

STEEL GTR

FRETLESS

CHOIR AAHS

SLOWSTRING

100

MELODY

DRUMS

MARIMBA

STEEL GTR

FRETLESS

CHOIR AAHS

BRASS 1

SLOWSTRING

Detailed description: This page of a musical score contains eight staves. The MELODY staff (treble clef) starts with a tempo marking of 100 and features a melodic line with a long slur over the first two measures. The DRUMS staff (drum clef) shows a complex rhythmic pattern with various note values and rests. The MARIMBA staff (bass clef) plays a steady, rhythmic accompaniment. The STEEL GTR staff (treble clef, key signature of one sharp) features a melodic line with many slurs and ties. The FRETLESS staff (bass clef) has a simple melodic line. The CHOIR AAHS staff (treble clef) mirrors the melodic line of the MELODY staff. The BRASS 1 staff (treble clef) provides harmonic support with block chords. The SLOWSTRING staff (treble clef) shows a sustained, low-frequency accompaniment.

101

MELODY

DRUMS

MARIMBA

STEEL GTR

FRETLESS

CHOIR AAHS

BRASS 1

SLOWSTRING

Detailed description of the musical score: The score is for page 41, measures 101 and 102. It features eight staves. The MELODY staff (treble clef, one sharp) begins with a quarter rest, followed by quarter notes G4, A4, B4, and C5. The DRUMS staff shows a complex rhythmic pattern with various note heads and rests. The MARIMBA staff (treble and bass clefs) has a treble staff with quarter notes and a bass staff with chords. The STEEL GTR staff (treble clef, one sharp) features a melodic line with a triplet of eighth notes. The FRETLESS staff (bass clef) has a simple melodic line. The CHOIR AAHS staff (treble clef) has a simple melodic line. The BRASS 1 staff (treble clef, one sharp) has a whole note chord. The SLOWSTRING staff (treble clef, one sharp) has a whole note chord.

MELODY

OBOE

DRUMS

MARIMBA

STEEL GTR

FRETLESS

CHOIR AAHS

SLOWSTRING

103

$\text{♩} = 116,000313$

Detailed description of the musical score: The score is for page 42, starting at measure 103. It features eight staves: MELODY, OBOE, DRUMS, MARIMBA, STEEL GTR, FRETLESS, CHOIR AAHS, and SLOWSTRING. The tempo is indicated as $\text{♩} = 116,000313$. In measure 103, the MELODY and CHOIR AAHS parts play a sequence of notes: a quarter rest, a quarter note with a sharp sign, a quarter note, a quarter note, and a quarter note. The OBOE part has a whole rest. The DRUMS part has a complex rhythmic pattern with various note values and rests. The MARIMBA part has a quarter note followed by a quarter rest. The STEEL GTR part has a complex rhythmic pattern with a triplet in measure 104. The FRETLESS part has a whole rest. The SLOWSTRING part has a chord change in measure 104, indicated by a double bar line and a new chord symbol.

105

OBOE

STEEL GTR

FRETLESS

BRASS 1

SLOWSTRING

$\text{♩} = 113,000713,000916 \quad \text{♩} = 108,001080,000000$



107

MELODY

OBOE

DRUMS

MARIMBA

STEEL GTR

FRETLESS

CHOIR AAHS

BRASS 1

SLOWSTRING

$\text{♩} = 110,000916$

$\text{♩} = 110,000916$

MELODY

Kristina Bach - Und Die Erde Steht Still

♩ = 118,001060

9

14

19

24

29

34

39

2

Musical score for MELODY, page 2, measures 45-90. The score is written in treble clef with a key signature of one sharp (F#) and a 7/8 time signature. The melody consists of ten staves of music, each containing five measures. The notes are primarily eighth and quarter notes, often beamed together in groups. The key signature is F# (one sharp), and the time signature is 7/8. The melody is written in treble clef.

Measures 45-50: The melody begins with a quarter rest, followed by eighth notes G4, A4, B4, C5, D5, E5, F#5, G5. Measure 46 contains a quarter rest, followed by eighth notes G5, F#5, E5, D5, C5, B4, A4, G4. Measure 47 contains a quarter rest, followed by eighth notes G4, A4, B4, C5, D5, E5, F#5, G5. Measure 48 contains a quarter rest, followed by eighth notes G5, F#5, E5, D5, C5, B4, A4, G4. Measure 49 contains a quarter rest, followed by eighth notes G4, A4, B4, C5, D5, E5, F#5, G5. Measure 50 contains a quarter rest, followed by eighth notes G5, F#5, E5, D5, C5, B4, A4, G4.

Measures 51-56: The melody continues with eighth notes G4, A4, B4, C5, D5, E5, F#5, G5. Measure 52 contains a quarter rest, followed by eighth notes G5, F#5, E5, D5, C5, B4, A4, G4. Measure 53 contains a quarter rest, followed by eighth notes G4, A4, B4, C5, D5, E5, F#5, G5. Measure 54 contains a quarter rest, followed by eighth notes G5, F#5, E5, D5, C5, B4, A4, G4. Measure 55 contains a quarter rest, followed by eighth notes G4, A4, B4, C5, D5, E5, F#5, G5. Measure 56 contains a quarter rest, followed by eighth notes G5, F#5, E5, D5, C5, B4, A4, G4.

Measures 57-62: The melody continues with eighth notes G4, A4, B4, C5, D5, E5, F#5, G5. Measure 58 contains a quarter rest, followed by eighth notes G5, F#5, E5, D5, C5, B4, A4, G4. Measure 59 contains a quarter rest, followed by eighth notes G4, A4, B4, C5, D5, E5, F#5, G5. Measure 60 contains a quarter rest, followed by eighth notes G5, F#5, E5, D5, C5, B4, A4, G4. Measure 61 contains a quarter rest, followed by eighth notes G4, A4, B4, C5, D5, E5, F#5, G5. Measure 62 contains a quarter rest, followed by eighth notes G5, F#5, E5, D5, C5, B4, A4, G4.

Measures 63-68: The melody continues with eighth notes G4, A4, B4, C5, D5, E5, F#5, G5. Measure 64 contains a quarter rest, followed by eighth notes G5, F#5, E5, D5, C5, B4, A4, G4. Measure 65 contains a quarter rest, followed by eighth notes G4, A4, B4, C5, D5, E5, F#5, G5. Measure 66 contains a quarter rest, followed by eighth notes G5, F#5, E5, D5, C5, B4, A4, G4. Measure 67 contains a quarter rest, followed by eighth notes G4, A4, B4, C5, D5, E5, F#5, G5. Measure 68 contains a quarter rest, followed by eighth notes G5, F#5, E5, D5, C5, B4, A4, G4.

Measures 69-74: The melody continues with eighth notes G4, A4, B4, C5, D5, E5, F#5, G5. Measure 70 contains a quarter rest, followed by eighth notes G5, F#5, E5, D5, C5, B4, A4, G4. Measure 71 contains a quarter rest, followed by eighth notes G4, A4, B4, C5, D5, E5, F#5, G5. Measure 72 contains a quarter rest, followed by eighth notes G5, F#5, E5, D5, C5, B4, A4, G4. Measure 73 contains a quarter rest, followed by eighth notes G4, A4, B4, C5, D5, E5, F#5, G5. Measure 74 contains a quarter rest, followed by eighth notes G5, F#5, E5, D5, C5, B4, A4, G4.

Measures 75-80: The melody continues with eighth notes G4, A4, B4, C5, D5, E5, F#5, G5. Measure 76 contains a quarter rest, followed by eighth notes G5, F#5, E5, D5, C5, B4, A4, G4. Measure 77 contains a quarter rest, followed by eighth notes G4, A4, B4, C5, D5, E5, F#5, G5. Measure 78 contains a quarter rest, followed by eighth notes G5, F#5, E5, D5, C5, B4, A4, G4. Measure 79 contains a quarter rest, followed by eighth notes G4, A4, B4, C5, D5, E5, F#5, G5. Measure 80 contains a quarter rest, followed by eighth notes G5, F#5, E5, D5, C5, B4, A4, G4.

Measures 81-86: The melody continues with eighth notes G4, A4, B4, C5, D5, E5, F#5, G5. Measure 82 contains a quarter rest, followed by eighth notes G5, F#5, E5, D5, C5, B4, A4, G4. Measure 83 contains a quarter rest, followed by eighth notes G4, A4, B4, C5, D5, E5, F#5, G5. Measure 84 contains a quarter rest, followed by eighth notes G5, F#5, E5, D5, C5, B4, A4, G4. Measure 85 contains a quarter rest, followed by eighth notes G4, A4, B4, C5, D5, E5, F#5, G5. Measure 86 contains a quarter rest, followed by eighth notes G5, F#5, E5, D5, C5, B4, A4, G4.

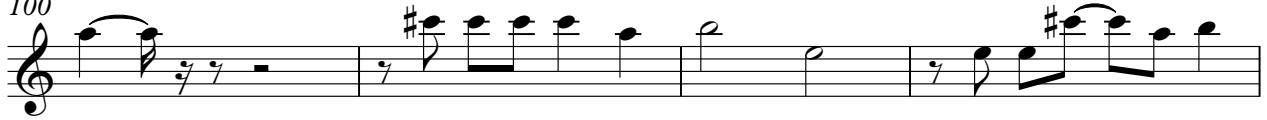
Measures 87-90: The melody continues with eighth notes G4, A4, B4, C5, D5, E5, F#5, G5. Measure 88 contains a quarter rest, followed by eighth notes G5, F#5, E5, D5, C5, B4, A4, G4. Measure 89 contains a quarter rest, followed by eighth notes G4, A4, B4, C5, D5, E5, F#5, G5. Measure 90 contains a quarter rest, followed by eighth notes G5, F#5, E5, D5, C5, B4, A4, G4.

MELODY

95



100



104



OBOE

Kristina Bach - Und Die Erde Steht Still

♩ = 118,001060

7

104

♩ = 116,000313

♩ = 116,000313

Kristina Bach - Und Die Erde Steht Still

DRUMS

♩ = 118,001060

2

6

9

12

14

16

18

20

22

24

V.S.

DRUMS

26

28

30

32

34

36

38

40

42

44

DRUMS

46

48

50

52

54

56

58

60

62

64

V.S.

66

68

70

72

74

76

78

80

82

84

DRUMS

86

88

90

92

94

96

98

100

102

104

♩ = 116,000313 ♩ = 1 1 3 1 0 0 0 0 0 0 0 0 0 0 0 0 9 1 6

MARIMBA

Kristina Bach - Und Die Erde Steht Still

♩ = 118,001060

2

6

9

12

15

17

V.S.

19

Measures 19-21: Treble clef, quarter notes with accents. Bass clef, quarter notes with accents.

22

Measure 22: Treble clef, quarter notes with accents.

24

Measure 24: Treble clef, quarter notes with accents.

26

Measures 26-28: Treble clef, quarter notes with accents. Bass clef, quarter notes with accents.

29

Measures 29-31: Treble clef, quarter notes with accents. Bass clef, quarter notes with accents.

32

Measures 32-34: Treble clef, quarter notes with accents. Bass clef, quarter notes with accents.

35

Measure 35: Bass clef, quarter notes with accents.

38

Measure 38: Treble clef, quarter notes with accents.

40

43

46

49

51

53

56

58

V.S.

60

63

66

69

72

74

77

80

83

85

88

90

93

96

98

101

Musical score for Marimba, measures 101-102. Measure 101 shows a bass line with eighth notes and a treble line with a whole rest. Measure 102 shows a treble line with eighth notes and a bass line with a whole rest.

103

$\text{♩} = 116,000313 \quad \text{♩} = 116,000313$

Musical score for Marimba, measure 103. The score includes a treble clef, a quarter note, and three measures of rests. Above the rests are the numbers 2, 2, and 3. Above the first two rests are the mathematical expressions $\frac{1}{2}$ and $\frac{1}{3}$. Above the third rest is the mathematical expression $\frac{1}{3}$.

STEEL GTR

Kristina Bach - Und Die Erde Steht Still

♩ = 118,001060

5

7

10

12

15

17

20

22

25

V.S.

Detailed description: The score is written for a steel guitar in 4/4 time with a tempo of 118. It begins with a melodic line in the first staff, marked with a triplet of eighth notes. The second staff introduces a complex harmonic accompaniment with multiple chords and moving lines. The piece continues with various rhythmic patterns, including eighth and sixteenth notes, and features several triplet markings throughout. The key signature has one sharp (F#). The score concludes with a final triplet and the instruction 'V.S.' (Vivace).

28



Musical notation for measure 28, featuring a complex rhythmic pattern with multiple beamed notes and rests.

30



Musical notation for measure 30, showing a sequence of notes with various rhythmic values and rests.

33



Musical notation for measure 33, including a triplet of notes indicated by a '3' above the staff.

36



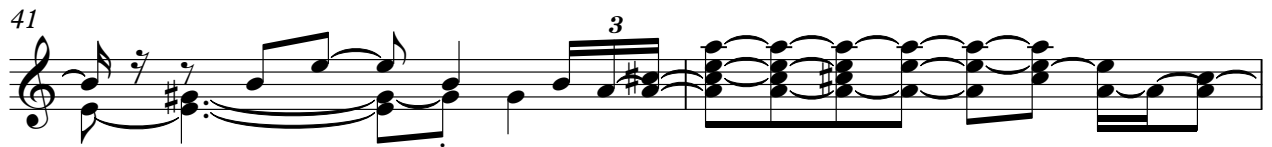
Musical notation for measure 36, featuring a complex rhythmic pattern with multiple beamed notes and rests.

38



Musical notation for measure 38, showing a sequence of notes with various rhythmic values and rests.

41



Musical notation for measure 41, including a triplet of notes indicated by a '3' above the staff.

43



Musical notation for measure 43, showing a sequence of notes with various rhythmic values and rests.

46



Musical notation for measure 46, featuring a complex rhythmic pattern with multiple beamed notes and rests.

49



Musical notation for measure 49, showing a sequence of notes with various rhythmic values and rests.

51



Musical notation for measure 51, including a triplet of notes indicated by a '3' above the staff.

54

56

59

62

64

67

70

72

75

77

V.S.

79

82

85

87

90

93

95

98

100

103

♩ = 116,000313

STEEL GTR

105

♩ = 113,000000 ♩ = 96,000000 ♩ = 110,000916

Musical notation for a steel guitar piece, including a treble clef, a key signature of one sharp (F#), and a 3/4 time signature. The notation consists of a single staff with various notes, rests, and a triplet of eighth notes. A large number '3' is placed above the triplet. The piece ends with a double bar line.

FRETLESS

Kristina Bach - Und Die Erde Steht Still

♩ = 118,001060

2

7

12

17

22

27

32

37

42

47

V.S.

♩ = 118,001060

25

30

35

40

18

62

67

72

75

5

CHOIR AAHS

82



88



93



98



103

♩ = 116,000313 ♩ = 116,000313



BRASS 1

Kristina Bach - Und Die Erde Steht Still

♩ = 118,001060

26

31

2

38

3

45

16

64

2

70

2

76

3

4

86

2

92



Kristina Bach - Und Die Erde Steht Still

SLOWSTRING

♩ = 118,001060

9

18

27

35

43

52

61

69

77

V.S.

2

SLOWSTRING

86

94

102

♩ = 116,000313 ♩ = 116,000313 ♩ = 116,000313 ♩ = 116,000313 ♩ = 116,000313