

Laura Branigan - Selfcontrol

♩ = 114,001251

FLUTE

DRUMS

KALIMBA

VIBRAPHONE

CLEAN GTR

DISTORTION

SYN BASS 2

FANTASIA

POLYSYNTH

ICE RAIN

SWEEP PAD

♩ = 114,001251

BRIGHTNESS

The image displays a multi-track musical score for the song 'Selfcontrol' by Laura Branigan. The score is arranged in a vertical stack of staves, each representing a different instrument or effect. The tempo is marked as 114,001251. The time signature is 4/4. The instruments and effects included are: FLUTE, DRUMS, KALIMBA, VIBRAPHONE, CLEAN GTR, DISTORTION (with a guitar diagram showing fret positions: E, B, G, D, A, B, A, A), SYN BASS 2, FANTASIA, POLYSYNTH, ICE RAIN, SWEEP PAD, and BRIGHTNESS. The BRIGHTNESS track contains a melodic line starting in the fourth measure. The DRUMS track shows a rhythmic pattern starting in the fourth measure. The POLYSYNTH track has a sustained chord starting in the fourth measure.

5

DRUMS

POLYSYNTH

BRIGHTNESS



8

DRUMS

KALIMBA

SYN BASS 2

POLYSYNTH

BRIGHTNESS



11

DRUMS

KALIMBA

DISTORTION

SYN BASS 2

POLYSYNTH

BRIGHTNESS

Distortion System 1:
 T: 3 3 6 3 3 3 6
 B: 1 1 6 1 1 6 1 4

Distortion System 2:
 T: 3 3 1 3 3 1 3 1
 B: 3 3 1 3 3 1 3 6

14 3

DRUMS

VIBRAPHONE

DISTORTION

SYN BASS 2

FANTASIA

SWEEP PAD

Tablature for Distortion:

A	3	3	3	3	3	6	3	3	1	3	3	1	3	6		
B	1	1	6	1	1	6	1	4	3	3	1	3	3	1	3	6



17

DRUMS

VIBRAPHONE

SYN BASS 2

FANTASIA

SWEEP PAD

21

DRUMS

VIBRAPHONE

SYN BASS 2

FANTASIA

ICE RAIN

SWEEP PAD



25

DRUMS

VIBRAPHONE

SYN BASS 2

FANTASIA

ICE RAIN

SWEEP PAD

29

DRUMS

VIBRAPHONE

SYN BASS 2

FANTASIA

ICE RAIN



32

DRUMS

KALIMBA

VIBRAPHONE

SYN BASS 2

ICE RAIN

35

DRUMS

KALIMBA

VIBRAPHONE

SYN BASS 2

ICE RAIN

Detailed description: This block contains the musical notation for measures 35, 36, and 37. The DRUMS part features a consistent rhythmic pattern of eighth notes. The KALIMBA part has a melodic line in the treble clef and a bass line in the bass clef. The VIBRAPHONE part consists of eighth-note chords. The SYN BASS 2 part is a bass line in the bass clef. The ICE RAIN part is a melodic line in the treble clef.



38

DRUMS

KALIMBA

VIBRAPHONE

CLEAN GTR

DISTORTION

SYN BASS 2

ICE RAIN

Detailed description: This block contains the musical notation for measures 38, 39, and 40. The DRUMS part continues with the same rhythmic pattern. The KALIMBA part continues its melodic and bass lines. The VIBRAPHONE part continues with eighth-note chords. The CLEAN GTR part has a melodic line in the treble clef starting in measure 39. The DISTORTION part shows guitar tablature with fret numbers (3, 1, 3, 3, 3, 0, 3) and a bar line. The SYN BASS 2 part continues its bass line. The ICE RAIN part continues its melodic line.

41

DRUMS

KALIMBA

VIBRAPHONE

CLEAN GTR

DISTORTION

SYN BASS 2



43

DRUMS

KALIMBA

VIBRAPHONE

CLEAN GTR

DISTORTION

SYN BASS 2

45

DRUMS

KALIMBA

VIBRAPHONE

CLEAN GTR

DISTORTION

SYN BASS 2



47

DRUMS

KALIMBA

VIBRAPHONE

CLEAN GTR

DISTORTION

SYN BASS 2

POLYSYNTH

ICE RAIN

49

DRUMS

KALIMBA

VIBRAPHONE

CLEAN GTR

DISTORTION

SYN BASS 2

POLYSYNTH

ICE RAIN



51

DRUMS

KALIMBA

VIBRAPHONE

CLEAN GTR

SYN BASS 2

POLYSYNTH

ICE RAIN

53

DRUMS

KALIMBA

VIBRAPHONE

CLEAN GTR

SYN BASS 2

POLYSYNTH



55

DRUMS

KALIMBA

VIBRAPHONE

CLEAN GTR

DISTORTION

SYN BASS 2

POLYSYNTH

ICE RAIN

57

DRUMS

KALIMBA

VIBRAPHONE

CLEAN GTR

DISTORTION

SYN BASS 2

POLYSYNTH

ICE RAIN

58



59

DRUMS

KALIMBA

VIBRAPHONE

CLEAN GTR

SYN BASS 2

POLYSYNTH

ICE RAIN

60

61

DRUMS

KALIMBA

VIBRAPHONE

CLEAN GTR

SYN BASS 2

POLYSYNTH

Detailed description: This block contains the musical notation for measures 61 and 62. The score is arranged in a vertical stack of staves. The DRUMS staff shows a consistent rhythmic pattern of eighth notes. The KALIMBA staff features a melodic line with eighth notes and rests. The VIBRAPHONE staff has a melodic line with eighth notes and rests. The CLEAN GTR staff consists of a series of chords, primarily triads and dyads, with some slurs. The SYN BASS 2 staff has a bass line with eighth notes and rests. The POLYSYNTH staff contains a sustained chord with a tremolo effect, indicated by a wavy line under the notes.



63

DRUMS

KALIMBA

VIBRAPHONE

CLEAN GTR

DISTORTION

SYN BASS 2

POLYSYNTH

BRIGHTNESS

Detailed description: This block contains the musical notation for measures 63, 64, and 65. The DRUMS staff shows a rhythmic pattern with a double bar line at the end of measure 63. The KALIMBA staff has a melodic line in measure 63, followed by rests in 64 and 65, and a melodic line in measure 65. The VIBRAPHONE staff has a melodic line in measure 63, followed by rests in 64 and 65. The CLEAN GTR staff has a melodic line in measure 63, followed by rests in 64 and 65, and a melodic line in measure 65. The DISTORTION staff shows guitar tablature for measures 63, 64, and 65. The SYN BASS 2 staff has a bass line with eighth notes and rests. The POLYSYNTH staff contains a sustained chord with a tremolo effect. The BRIGHTNESS staff has a melodic line with eighth notes and rests.

66

DRUMS

Drums staff showing a rhythmic pattern of eighth notes and sixteenth notes.

KALIMBA

Kalimba staff with a melodic line in the treble clef and a bass line in the bass clef.

CLEAN GTR

Clean guitar staff with a melodic line in the treble clef.

DISTORTION

T																			
A	3	3	6	3	3	6	3	6		3	3	1	3	3	1	3	1		
B	1	1	6	1	1	6	1	4		3	3	1	3	3	1	3	6		

SYN BASS 2

Syn Bass 2 staff with a melodic line in the bass clef.

BRIGHTNESS

Brightness staff with a melodic line in the treble clef.

68

DRUMS

KALIMBA

VIBRAPHONE

CLEAN GTR

DISTORTION

A	3	3	6	3	3	6	3	6	3	3	1	3	3	1	3	6
B	1	1	6	1	1	6	1	4	3	3	1	3	3	1	3	6

SYN BASS 2

FANTASIA

SWEEP PAD

BRIGHTNESS



71

DRUMS

VIBRAPHONE

SYN BASS 2

FANTASIA

75

FLUTE

DRUMS

KALIMBA

VIBRAPHONE

SYN BASS 2

FANTASIA

ICE RAIN

SWEEP PAD



79

FLUTE

DRUMS

KALIMBA

VIBRAPHONE

SYN BASS 2

ICE RAIN

82

FLUTE

DRUMS

KALIMBA

VIBRAPHONE

SYN BASS 2

ICE RAIN



84

FLUTE

DRUMS

KALIMBA

VIBRAPHONE

DISTORTION

SYN BASS 2

ICE RAIN

86

FLUTE

DRUMS

KALIMBA

VIBRAPHONE

CLEAN GTR

DISTORTION

SYN BASS 2

POLYSYNTH



88

FLUTE

DRUMS

KALIMBA

VIBRAPHONE

CLEAN GTR

DISTORTION

SYN BASS 2

POLYSYNTH

90

FLUTE

DRUMS

KALIMBA

VIBRAPHONE

CLEAN GTR

DISTORTION

SYN BASS 2

POLYSYNTH

92

FLUTE

DRUMS

KALIMBA

VIBRAPHONE

CLEAN GTR

DISTORTION

SYN BASS 2

POLYSYNTH

BRIGHTNESS



94

DRUMS

KALIMBA

CLEAN GTR

DISTORTION

SYN BASS 2

POLYSYNTH

BRIGHTNESS

96

DRUMS

KALIMBA

CLEAN GTR

DISTORTION

SYN BASS 2

POLYSYNTH

BRIGHTNESS



98

DRUMS

KALIMBA

CLEAN GTR

DISTORTION

SYN BASS 2

POLYSYNTH

BRIGHTNESS

100

DRUMS

KALIMBA

CLEAN GTR

DISTORTION

SYN BASS 2

POLYSYNTH

BRIGHTNESS

A 3 3 6 3 3 6 3 6
B 1 1 6 1 1 6 1 4

3 3 1 3 3 1 3 6
3 3 1 3 3 1 3 6



102

DRUMS

KALIMBA

VIBRAPHONE

CLEAN GTR

DISTORTION

SYN BASS 2

POLYSYNTH

BRIGHTNESS

A 3 3 6 3 3 6 3 6
B 1 1 6 1 1 6 1 4

3 3 1 3 3 1 3 1
3 3 1 3 3 1 3 6

104

DRUMS

KALIMBA

VIBRAPHONE

CLEAN GTR

DISTORTION

SYN BASS 2

POLYSYNTH

BRIGHTNESS



106

DRUMS

KALIMBA

VIBRAPHONE

CLEAN GTR

DISTORTION

SYN BASS 2

POLYSYNTH

BRIGHTNESS

108

DRUMS

KALIMBA

VIBRAPHONE

CLEAN GTR

DISTORTION

SYN BASS 2

POLYSYNTH

BRIGHTNESS

109

DRUMS

KALIMBA

VIBRAPHONE

CLEAN GTR

DISTORTION

SYN BASS 2

POLYSYNTH

BRIGHTNESS

FLUTE

Laura Branigan - Selfcontrol

♩ = 114,001251

75

79

83

87

90

93

18

DRUMS

Laura Branigan - Selfcontrol

♩ = 114,001251

2

6

9

12

16

20

24

28

32

35

Detailed description: This image shows a drum score for the song 'Selfcontrol' by Laura Branigan. The score is written on ten staves, each representing a four-measure phrase. The first staff includes a tempo marking of 114,001251 and a '2' above the first measure. The notation uses 'x' marks for cymbals and 'o' marks for snare drums, with stems indicating the drum being played. The bass drum part is shown as a series of quarter notes on a single line. The score is organized into measures, with measure numbers 2, 6, 9, 12, 16, 20, 24, 28, 32, and 35 indicated at the start of their respective staves.

V.S.

DRUMS

38

Musical notation for drum set at measure 38. The top staff shows a complex snare drum pattern with many 'x' marks. The bottom staff shows a bass drum pattern with quarter notes.

41

Musical notation for drum set at measure 41. The top staff shows a complex snare drum pattern with many 'x' marks. The bottom staff shows a bass drum pattern with quarter notes.

44

Musical notation for drum set at measure 44. The top staff shows a complex snare drum pattern with many 'x' marks. The bottom staff shows a bass drum pattern with quarter notes.

47

Musical notation for drum set at measure 47. The top staff shows a complex snare drum pattern with many 'x' marks and a triplet bracket over three notes. The bottom staff shows a bass drum pattern with quarter notes.

49

Musical notation for drum set at measure 49. The top staff shows a complex snare drum pattern with many 'x' marks. The bottom staff shows a bass drum pattern with quarter notes and some dotted notes.

52

Musical notation for drum set at measure 52. The top staff shows a complex snare drum pattern with many 'x' marks. The bottom staff shows a bass drum pattern with quarter notes and some dotted notes.

55

Musical notation for drum set at measure 55. The top staff shows a complex snare drum pattern with many 'x' marks and a triplet bracket over three notes. The bottom staff shows a bass drum pattern with quarter notes and some dotted notes.

57

Musical notation for drum set at measure 57. The top staff shows a complex snare drum pattern with many 'x' marks. The bottom staff shows a bass drum pattern with quarter notes and some dotted notes.

60

Musical notation for drum set at measure 60. The top staff shows a complex snare drum pattern with many 'x' marks. The bottom staff shows a bass drum pattern with quarter notes and some dotted notes.

63

Musical notation for drum set at measure 63. The top staff shows a complex snare drum pattern with many 'x' marks. The bottom staff shows a bass drum pattern with quarter notes and some dotted notes.

DRUMS

66

Musical notation for drum set at measure 66. The top staff shows a complex snare drum pattern with sixteenth and thirty-second notes. The bottom staff shows a bass drum pattern with quarter notes.

69

Musical notation for drum set at measure 69. The top staff shows a complex snare drum pattern with sixteenth and thirty-second notes. The bottom staff shows a bass drum pattern with quarter notes.

72

Musical notation for drum set at measure 72. The top staff shows a complex snare drum pattern with sixteenth and thirty-second notes. The bottom staff shows a bass drum pattern with quarter notes.

76

Musical notation for drum set at measure 76. The top staff shows a complex snare drum pattern with sixteenth and thirty-second notes. The bottom staff shows a bass drum pattern with quarter notes.

79

Musical notation for drum set at measure 79. The top staff shows a complex snare drum pattern with sixteenth and thirty-second notes. The bottom staff shows a bass drum pattern with quarter notes.

82

Musical notation for drum set at measure 82. The top staff shows a complex snare drum pattern with sixteenth and thirty-second notes. The bottom staff shows a bass drum pattern with quarter notes.

85

Musical notation for drum set at measure 85. The top staff shows a complex snare drum pattern with sixteenth and thirty-second notes. The bottom staff shows a bass drum pattern with quarter notes.

88

Musical notation for drum set at measure 88. The top staff shows a complex snare drum pattern with sixteenth and thirty-second notes. The bottom staff shows a bass drum pattern with quarter notes.

91

Musical notation for drum set at measure 91. The top staff shows a complex snare drum pattern with sixteenth and thirty-second notes. The bottom staff shows a bass drum pattern with quarter notes.

94

Musical notation for drum set at measure 94. The top staff shows a complex snare drum pattern with sixteenth and thirty-second notes. The bottom staff shows a bass drum pattern with quarter notes.

V.S.

4

DRUMS

97

Musical notation for drums, measures 97-100. The notation consists of two staves. The top staff uses 'x' marks to represent drum hits, with beams indicating groups of hits. The bottom staff shows a bass line with quarter and eighth notes, including a double bar line at the end of the first measure.

100

Musical notation for drums, measures 100-103. The notation consists of two staves. The top staff uses 'x' marks to represent drum hits, with beams indicating groups of hits. The bottom staff shows a bass line with quarter and eighth notes, including a double bar line at the end of the first measure.

103

Musical notation for drums, measures 103-106. The notation consists of two staves. The top staff uses 'x' marks to represent drum hits, with beams indicating groups of hits. The bottom staff shows a bass line with quarter and eighth notes, including a double bar line at the end of the first measure.

106

Musical notation for drums, measures 106-108. The notation consists of two staves. The top staff uses 'x' marks to represent drum hits, with beams indicating groups of hits. The bottom staff shows a bass line with quarter and eighth notes, including a double bar line at the end of the first measure.

108

Musical notation for drums, measures 108-110. The notation consists of two staves. The top staff uses 'x' marks to represent drum hits, with beams indicating groups of hits. The bottom staff shows a bass line with quarter and eighth notes, including a double bar line at the end of the first measure and a '2' indicating a two-measure rest.

KALIMBA

Laura Branigan - Selfcontrol

♩ = 114,001251

6

6

10

20

20

32

35

38

41

V.S.

44



46



48



50



53



56



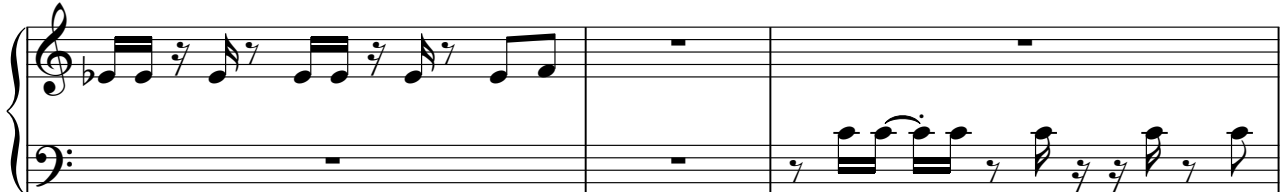
58



61



63



66

69

79

82

84

86

88

91

93



Musical notation for measure 93, featuring a treble clef, a key signature of one flat (B-flat), and a 4/4 time signature. The notation includes eighth and sixteenth notes with stems, and a final chord with a sharp sign.

96



Musical notation for measure 96, featuring a treble clef, a key signature of one flat (B-flat), and a 4/4 time signature. The notation includes eighth and sixteenth notes with stems, and a final chord with a sharp sign.

98



Musical notation for measure 98, featuring a treble clef, a key signature of one flat (B-flat), and a 4/4 time signature. The notation includes eighth and sixteenth notes with stems, and a final chord with a sharp sign.

100



Musical notation for measure 100, featuring a treble clef, a key signature of one flat (B-flat), and a 4/4 time signature. The notation includes eighth and sixteenth notes with stems, and a final chord with a sharp sign.

102



Musical notation for measure 102, featuring a treble clef, a key signature of one flat (B-flat), and a 4/4 time signature. The notation includes eighth and sixteenth notes with stems, and a final chord with a sharp sign.

104



Musical notation for measure 104, featuring a treble clef, a key signature of one flat (B-flat), and a 4/4 time signature. The notation includes eighth and sixteenth notes with stems, and a final chord with a sharp sign.

106



Musical notation for measure 106, featuring a treble clef, a key signature of one flat (B-flat), and a 4/4 time signature. The notation includes eighth and sixteenth notes with stems, and a final chord with a sharp sign.

108



Musical notation for measure 108, featuring a treble clef, a key signature of one flat (B-flat), and a 4/4 time signature. The notation includes eighth and sixteenth notes with stems, and a final chord with a sharp sign and a double bar line with a '2' below it.

VIBRAPHONE

Laura Branigan - Selfcontrol

♩ = 114,001251

13

18

22

26

30

34

38

42

46

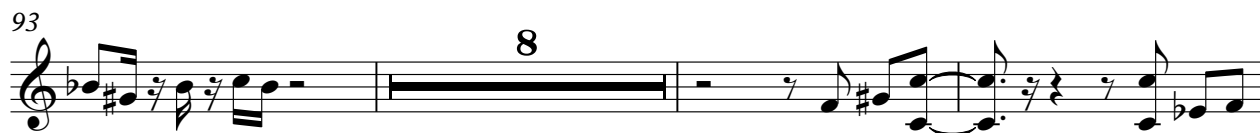
50

V.S.



VIBRAPHONE


93



8

Detailed description: This block contains musical notation for measures 93 through 103. It begins with a treble clef and a key signature of one flat (B-flat). The notation includes various rhythmic values such as eighth and sixteenth notes, rests, and slurs. A large number '8' is positioned above the staff, indicating a measure rest for eight measures. The notation concludes with a double bar line.

104



Detailed description: This block contains musical notation for measures 104 through 106. It continues with the same treble clef and one-flat key signature. The notation features eighth and sixteenth notes with slurs, and rests. It ends with a double bar line.

107



2

Detailed description: This block contains musical notation for measures 107 and 108. It maintains the treble clef and one-flat key signature. The notation includes eighth and sixteenth notes with slurs. A large number '2' is placed above the staff, indicating a measure rest for two measures. The notation concludes with a double bar line.

♩ = 114,001251

38

41

43

45

47

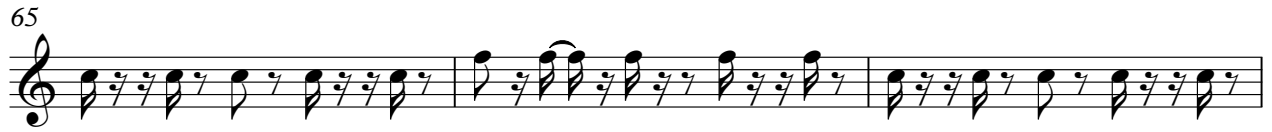
49

51

54

57

59



CLEAN GTR

3

105

107

109

Laura Branigan - Selfcontrol

DISTORTION

♩ = 114,001251

9

E									
T									
A									
B									
A									
A									

3 3 6 3 3 6 3 6
1 1 6 1 1 6 1 4
6 6

13

T									
A									
B									

3 3 1 3 3 1 3 1 3 3 6 3 3 6 3 6 3 3 1 3 3 1 3 6
1 1 6 1 1 6 1 4 3 3 1 3 3 1 3 6
3 3 1 3 3 1 3 6 6 6 6 3 3 1 3 3 1 3 6

16

23

T									
A									
B									

3 1 3 3 3 0 3 1 3
3 3 3 3 3 3 3 1 3

42

T									
A									
B									

3 3 0 0 1 3 3 3 1 0 3 3 3 3 0 1 1 1 0 3 3
3 3 3 3 3 3 3 3 3 3 3 3 3 3 3 3 3 3 3 3

47

T									
A									
B									

3 3 3 1 3 3 3 3 3 1 1 3 1 3 3 3 3 3 3 1 1 3 1 3
3 3

51

4

T									
A									
B									

3 1 1 3 1 3 3 3 1 1 3 1 3 3 3 1 1 3 1 3 3
3 3 3 3 3 3 3 3 3 3 3 3 3 3 3 3 3 3 3 3

58

5

T									
A									
B									

3 3 1 1 3 1 3 3 3 3 6 3 6 3 3 1 3 3 1 3 6
1 1 6 1 1 6 1 4 3 3 6 1 4 3 3 1 3 3 1 3 6
6 6 6 6 6 6 6 6 6 6 6 6 6 6 6 6 6 6 6 6

66

T									
A									
B									

3 3 6 3 3 6 3 6 3 3 1 3 3 1 3 1
1 1 6 1 1 6 1 4 3 3 1 3 3 1 3 6
6 6 6 6 6 6 6 6 6 6 6 6 6 6 6 6

68

15

T									
A									
B									

3 3 6 3 3 6 3 6 3 3 1 3 3 1 3 6
1 1 6 1 1 6 1 4 3 3 1 3 3 1 3 6
6 6 6 6 6 6 6 6 6 6 6 6 6 6 6 6

DISTORTION

T				
A				
B	3 1 3	3 3 0	3 3 1 3	3 3 0

89

T							
A		0 1 3	3 3 1 0	3 3 0 1	1 0		
B	3		3	3	3 3	3	3 3 1 3 6

1 3 6

94

T					
A	3 3	6 3 3	6 3 6	3 3 1 3 3 1 3 1	3 3 6 3 3 6 3 6
B	1 1 6	1 1 6 1 4	3 3 1 3 3 1 3 6	1 1 6 1 1 6 1 4	6 1 1 6

97

T					
A				3 3 6 3 3 3 6	1
B	3 3 1 3 3 1 3 6	1 1 6 1 1 6 1 4	3 3 1 3 3 1 3 6	3 3 1 3 3 1 3 6	3 3 1 3 3 1 3 6

100

T					
A	3 3	6 3 3	6 3 6	3 3 1 3 3 1 3 6	3 3 6 3 3 6 3 6
B	1 1 6	1 1 6 1 4	3 3 1 3 3 1 3 6	1 1 6 1 1 6 1 4	6 1 1 6

103

T					
A				3 3 6 3 3 3 6	
B	3 3 1 3 3 1 3 6	1 1 6 1 1 6 1 4	3 3 1 3 3 1 3 6	3 3 1 3 3 1 3 6	3 3 1 3 3 1 3 6

106

T					
A	3 3	6 3 3	6 3 6		3 3 1 3 3 1 3 1
B	1 1 6	1 1 6 1 4	3 3 1 3 3 1 3 6	3 3 1 3 3 1 3 6	

108

T					
A	3 3	6 3 3	6 3 6	3 3 1 3	3 1 3
B	1 1 6	1 1 6 1 4	3 3 1		

2

♩ = 114,001251

6

11

14

17

21

25

29

33

37

41

V.S.

83

87

91

95

98

101

104

107

109

2

FANTASIA

Laura Branigan - Selfcontrol

♩ = 114,001251

14

19

24

29

38

71

75

34

POLYSYNTH

Laura Branigan - Selfcontrol

♩ = 114,001251

2

9

36

50

58

22

86

94

101

106

2

ICE RAIN

Laura Branigan - Selfcontrol

♩ = 114,001251

22

27

32

37

8

48

52

4

59

18

81

84

26

SWEEP PAD

Laura Branigan - Selfcontrol

♩ = 114,001251

13

4/4

18

5

43

4/4

69

6

4/4

77

33

4/4

BRIGHTNESS

Laura Branigan - Selfcontrol

♩ = 114,001251

6

10 **50**

63

67

71 **22**

96

100

104

108

Detailed description: This is a guitar score for the song 'Selfcontrol' by Laura Branigan. The piece is in 4/4 time with a tempo of 114,001251. The score consists of ten staves of music. The first staff begins with a treble clef and a key signature of one flat (B-flat). The music features a complex rhythmic pattern, primarily using eighth and sixteenth notes, with frequent triplet markings. The notation includes many beamed notes and rests. There are several dynamic markings: a '50' above the staff between measures 10 and 63, and a '22' above the staff between measures 71 and 96. The score ends with a double bar line at the end of the tenth staff.