

Leinemann - Mein Tuut Tuut 2

♩ = 124,000252

HARMONICA

DRUMS

STEEL GTR

JAZZ GTR

FINGERDBA

MELODY

A.PIANO 1

The image displays a musical score for the piece 'Leinemann - Mein Tuut Tuut 2'. The score is arranged in a vertical staff format with seven parts: HARMONICA, DRUMS, STEEL GTR, JAZZ GTR, FINGERDBA, MELODY, and A.PIANO 1. The tempo is marked as ♩ = 124,000252. The time signature is 4/4. The HARMONICA, STEEL GTR, JAZZ GTR, and FINGERDBA parts are mostly silent, indicated by dashes. The DRUMS part shows a simple rhythmic pattern. The MELODY and A.PIANO 1 parts feature a melodic line with a sharp sign and a slash, suggesting a specific note or chord.

4

HARMONICA

DRUMS

STEEL GTR

FINGERDBA

MELODY

6

HARMONICA

DRUMS

STEEL GTR

FINGERDBA

7

HARMONICA

DRUMS

STEEL GTR

FINGERDBA

8

HARMONICA

DRUMS

STEEL GTR

FINGERDBA

This system contains measures 8 through 11. The Harmonica part starts with a long note in measure 8, followed by a melodic line in measures 9 and 10, and a final chord in measure 11. The Drums part features a consistent rhythmic pattern of eighth notes with occasional accents. The Steel Guitar part consists of a steady eighth-note accompaniment with chords. The Fingerboard part provides a simple bass line with quarter notes.

9

HARMONICA

DRUMS

STEEL GTR

FINGERDBA

This system contains measures 12 through 15. The Harmonica part begins with a rest in measure 12, followed by a melodic line in measures 13 and 14, and a final chord in measure 15. The Drums part continues with the same rhythmic pattern. The Steel Guitar part maintains the eighth-note accompaniment. The Fingerboard part continues with the same bass line.

10

HARMONICA

DRUMS

STEEL GTR

FINGERDBA

This system contains measures 16 through 19. The Harmonica part starts with a rest in measure 16, followed by a melodic line in measures 17 and 18, and a final chord in measure 19. The Drums part continues with the same rhythmic pattern. The Steel Guitar part maintains the eighth-note accompaniment. The Fingerboard part continues with the same bass line.

11

HARMONICA

DRUMS

STEEL GTR

FINGERDBA

12

HARMONICA

DRUMS

STEEL GTR

FINGERDBA

MELODY

13

HARMONICA

DRUMS

STEEL GTR

JAZZ GTR

FINGERDBA

MELODY

14

HARMONICA

DRUMS

STEEL GTR

JAZZ GTR

FINGERDBA

MELODY

15

HARMONICA

DRUMS

STEEL GTR

JAZZ GTR

FINGERDBA

MELODY

16

HARMONICA

DRUMS

STEEL GTR

JAZZ GTR

FINGERDBA

MELODY

17

HARMONICA

DRUMS

STEEL GTR

JAZZ GTR

FINGERDBA

MELODY

18

HARMONICA

DRUMS

STEEL GTR

JAZZ GTR

FINGERDBA

MELODY

19

HARMONICA

DRUMS

STEEL GTR

JAZZ GTR

FINGERDBA

MELODY

20

HARMONICA

DRUMS

STEEL GTR

JAZZ GTR

FINGERDBA

MELODY

21

HARMONICA

DRUMS

STEEL GTR

JAZZ GTR

FINGERDBA

MELODY

22

HARMONICA

DRUMS

STEEL GTR

JAZZ GTR

FINGERDBA

MELODY

23

HARMONICA

DRUMS

STEEL GTR

JAZZ GTR

FINGERDBA

MELODY

24

HARMONICA

DRUMS

STEEL GTR

JAZZ GTR

FINGERDBA

MELODY

25

HARMONICA

DRUMS

STEEL GTR

JAZZ GTR

FINGERDBA

MELODY

26

HARMONICA

DRUMS

STEEL GTR

JAZZ GTR

FINGERDBA

MELODY

27

HARMONICA

DRUMS

STEEL GTR

JAZZ GTR

FINGERDBA

MELODY

28

HARMONICA

DRUMS

STEEL GTR

JAZZ GTR

FINGERDBA

MELODY

29

HARMONICA

DRUMS

STEEL GTR

JAZZ GTR

FINGERDBA

MELODY

30

HARMONICA

DRUMS

STEEL GTR

JAZZ GTR

FINGERDBA

MELODY

31

HARMONICA

DRUMS

STEEL GTR

JAZZ GTR

FINGERDBA

MELODY

This musical score block covers measures 31 and 32. It features six staves: HARMONICA (top), DRUMS, STEEL GTR, JAZZ GTR, FINGERDBA, and MELODY (bottom). The HARMONICA part consists of a series of chords and melodic lines. The DRUMS part shows a steady rhythm with 'x' marks indicating specific drum hits. The STEEL GTR part features a complex pattern of chords and single notes. The JAZZ GTR part has sparse, rhythmic chords. The FINGERDBA part provides a bass line with various notes and rests. The MELODY part shows a simple melodic line with some rests.

32

HARMONICA

DRUMS

STEEL GTR

JAZZ GTR

FINGERDBA

MELODY

This musical score block covers measures 32 and 33. It features six staves: HARMONICA (top), DRUMS, STEEL GTR, JAZZ GTR, FINGERDBA, and MELODY (bottom). The HARMONICA part continues with chords and melodic lines. The DRUMS part maintains the rhythm with 'x' marks. The STEEL GTR part continues with its complex chordal pattern. The JAZZ GTR part has sparse, rhythmic chords. The FINGERDBA part provides a bass line with various notes and rests. The MELODY part shows a simple melodic line with some rests.

33

HARMONICA

DRUMS

STEEL GTR

JAZZ GTR

FINGERDBA

34

HARMONICA

DRUMS

STEEL GTR

JAZZ GTR

FINGERDBA

35

HARMONICA

DRUMS

STEEL GTR

JAZZ GTR

FINGERDBA

36

HARMONICA

DRUMS

STEEL GTR

JAZZ GTR

FINGERDBA

MELODY

37

HARMONICA

DRUMS

STEEL GTR

JAZZ GTR

FINGERDBA

38

HARMONICA

DRUMS

STEEL GTR

JAZZ GTR

FINGERDBA

39

HARMONICA

DRUMS

STEEL GTR

JAZZ GTR

FINGERDBA

40

HARMONICA

DRUMS

STEEL GTR

JAZZ GTR

FINGERDBA

MELODY

41

HARMONICA

DRUMS

STEEL GTR

JAZZ GTR

FINGERDBA

MELODY

42

HARMONICA

DRUMS

STEEL GTR

JAZZ GTR

FINGERDBA

MELODY

43

HARMONICA

DRUMS

STEEL GTR

JAZZ GTR

FINGERDBA

MELODY

44

HARMONICA

DRUMS

STEEL GTR

JAZZ GTR

FINGERDBA

MELODY

45

HARMONICA

DRUMS

FINGERDBA

MELODY

46

HARMONICA

DRUMS

FINGERDBA

MELODY

48

HARMONICA

DRUMS

STEEL GTR

FINGERDBA

MELODY

Detailed description: This system covers measures 48 to 51. The HARMONICA part starts with a triplet of eighth notes in measure 48, followed by a quarter note and another triplet. The DRUMS part features a consistent pattern of eighth notes with 'x' marks above them, and includes triplet markings in measures 49 and 50. The STEEL GTR part is mostly silent, with some chords appearing in measures 50 and 51. The FINGERDBA part plays a steady eighth-note bass line. The MELODY part follows a similar eighth-note pattern with occasional rests.

49

HARMONICA

DRUMS

STEEL GTR

JAZZ GTR

FINGERDBA

MELODY

Detailed description: This system covers measures 49 to 52. The HARMONICA part is more complex, featuring sixteenth-note patterns and sustained notes. The DRUMS part continues with eighth-note patterns and includes some rests. The STEEL GTR part plays a rhythmic accompaniment with chords. The JAZZ GTR part is mostly silent. The FINGERDBA part continues with a steady eighth-note bass line. The MELODY part follows a similar eighth-note pattern with occasional rests.

50

HARMONICA

DRUMS

STEEL GTR

JAZZ GTR

FINGERDBA

MELODY

51

HARMONICA

DRUMS

STEEL GTR

JAZZ GTR

FINGERDBA

MELODY

52

HARMONICA

DRUMS

STEEL GTR

JAZZ GTR

FINGERDBA

MELODY

Detailed description of the musical score for measures 52 and 53. The score is written for six instruments: Harmonica, Drums, Steel Guitar, Jazz Guitar, Fingerboard, and Melody. The key signature is one sharp (F#) and the time signature is 4/4. Measure 52: Harmonica plays a series of chords (F#m, F#m, F#m, F#m) with a melodic line. Drums play a steady rhythm with snare and bass drum. Steel Guitar plays a series of chords (F#m, F#m, F#m, F#m) with a melodic line. Jazz Guitar plays a series of chords (F#m, F#m, F#m, F#m) with a melodic line. Fingerboard plays a series of notes (F#, G, A, B, C, D, E, F#). Melody plays a series of notes (F#, G, A, B, C, D, E, F#). Measure 53: Harmonica plays a series of chords (F#m, F#m, F#m, F#m) with a melodic line. Drums play a steady rhythm with snare and bass drum. Steel Guitar plays a series of chords (F#m, F#m, F#m, F#m) with a melodic line. Jazz Guitar plays a series of chords (F#m, F#m, F#m, F#m) with a melodic line. Fingerboard plays a series of notes (F#, G, A, B, C, D, E, F#). Melody plays a series of notes (F#, G, A, B, C, D, E, F#) with a triplet in the final measure.

53

HARMONICA

DRUMS

STEEL GTR

JAZZ GTR

FINGERDBA

MELODY

Detailed description of the musical score for measures 53 and 54. The score is written for six instruments: Harmonica, Drums, Steel Guitar, Jazz Guitar, Fingerboard, and Melody. The key signature is one sharp (F#) and the time signature is 4/4. Measure 53: Harmonica plays a series of chords (F#m, F#m, F#m, F#m) with a melodic line. Drums play a steady rhythm with snare and bass drum. Steel Guitar plays a series of chords (F#m, F#m, F#m, F#m) with a melodic line. Jazz Guitar plays a series of chords (F#m, F#m, F#m, F#m) with a melodic line. Fingerboard plays a series of notes (F#, G, A, B, C, D, E, F#). Melody plays a series of notes (F#, G, A, B, C, D, E, F#) with a triplet in the final measure. Measure 54: Harmonica plays a series of chords (F#m, F#m, F#m, F#m) with a melodic line. Drums play a steady rhythm with snare and bass drum. Steel Guitar plays a series of chords (F#m, F#m, F#m, F#m) with a melodic line. Jazz Guitar plays a series of chords (F#m, F#m, F#m, F#m) with a melodic line. Fingerboard plays a series of notes (F#, G, A, B, C, D, E, F#). Melody plays a series of notes (F#, G, A, B, C, D, E, F#) with a triplet in the final measure.

54

HARMONICA

DRUMS

STEEL GTR

JAZZ GTR

FINGERDBA

MELODY

55

HARMONICA

DRUMS

STEEL GTR

JAZZ GTR

FINGERDBA

MELODY

56

HARMONICA

DRUMS

STEEL GTR

JAZZ GTR

FINGERDBA

MELODY

57

HARMONICA

DRUMS

STEEL GTR

JAZZ GTR

FINGERDBA

MELODY

58

HARMONICA

DRUMS

STEEL GTR

JAZZ GTR

FINGERDBA

MELODY

59

HARMONICA

DRUMS

STEEL GTR

JAZZ GTR

FINGERDBA

MELODY

60

HARMONICA

DRUMS

STEEL GTR

JAZZ GTR

FINGERDBA

MELODY

61

HARMONICA

DRUMS

STEEL GTR

JAZZ GTR

FINGERDBA

MELODY

62

HARMONICA

DRUMS

STEEL GTR

JAZZ GTR

FINGERDBA

MELODY

63

HARMONICA

DRUMS

STEEL GTR

JAZZ GTR

FINGERDBA

MELODY

64

HARMONICA

DRUMS

STEEL GTR

JAZZ GTR

FINGERDBA

MELODY

65

HARMONICA

DRUMS

STEEL GTR

JAZZ GTR

FINGERDBA

66

HARMONICA

DRUMS

STEEL GTR

JAZZ GTR

FINGERDBA

This musical score for measures 66-69 is arranged in five staves. The top staff is for Harmonica, using a treble clef and a key signature of one sharp (F#). It features a melodic line with eighth and sixteenth notes, including rests and slurs. The second staff is for Drums, using a drum clef, with a consistent rhythmic pattern of eighth notes and rests. The third staff is for Steel Guitar, using a treble clef, with a steady accompaniment of eighth-note chords. The fourth staff is for Jazz Guitar, using a treble clef, with a melodic line that includes slurs and rests. The bottom staff is for Fingerboard, using a bass clef, with a bass line consisting of eighth and quarter notes.

67

HARMONICA

DRUMS

STEEL GTR

JAZZ GTR

FINGERDBA

This musical score for measures 67-70 continues the arrangement in five staves. The top staff is for Harmonica, using a treble clef and a key signature of one sharp (F#). The melodic line continues with eighth and sixteenth notes, including slurs and rests. The second staff is for Drums, using a drum clef, with a consistent rhythmic pattern. The third staff is for Steel Guitar, using a treble clef, with a steady accompaniment of eighth-note chords. The fourth staff is for Jazz Guitar, using a treble clef, with a melodic line that includes slurs and rests. The bottom staff is for Fingerboard, using a bass clef, with a bass line consisting of eighth and quarter notes.

68

HARMONICA

DRUMS

STEEL GTR

JAZZ GTR

FINGERDBA

MELODY

69

HARMONICA

DRUMS

STEEL GTR

JAZZ GTR

FINGERDBA

70

HARMONICA

DRUMS

STEEL GTR

JAZZ GTR

FINGERDBA

71

HARMONICA

DRUMS

STEEL GTR

JAZZ GTR

FINGERDBA

MELODY

72

HARMONICA

Musical staff for HARMONICA. It begins with a treble clef and a key signature of one sharp (F#). The first measure contains a quarter rest, followed by a quarter note chord of F#4 and C5, a quarter rest, and another quarter note chord of F#4 and C5. The next two measures contain whole rests.

DRUMS

Musical staff for DRUMS. It begins with a double bar line. The first measure contains a quarter rest. The second measure contains a triplet of eighth notes marked with 'x' (snare) and a quarter note marked with 'o' (bass drum). The next two measures contain whole rests.

STEEL GTR

Musical staff for STEEL GTR. It begins with a treble clef and a key signature of one sharp (F#). The first measure contains a quarter rest, followed by a quarter note chord of F#4 and C5, a quarter rest, and another quarter note chord of F#4 and C5. The next two measures contain whole rests.

JAZZ GTR

Musical staff for JAZZ GTR. It begins with a treble clef and a key signature of one sharp (F#). The first measure contains a quarter rest. The second measure contains a quarter note chord of F#4 and C5. The next two measures contain whole rests.

FINGERDBA

Musical staff for FINGERDBA. It begins with a bass clef and a key signature of one sharp (F#). The first measure contains a quarter rest. The second measure contains a quarter note chord of F#4 and C5. The next two measures contain whole rests.

MELODY

Musical staff for MELODY. It begins with a treble clef and a key signature of one sharp (F#). The first measure contains a quarter rest. The second measure contains a quarter note chord of F#4 and C5. The next two measures contain whole rests.

A.PIANO 1

Musical staff for A.PIANO 1. It begins with a treble clef and a key signature of one sharp (F#). The first measure contains a quarter note chord of F#4 and C5. The next two measures contain whole rests.

HARMONICA

Leinemann - Mein Tuut Tuut 2

♩ = 124,000252

2

6

9

12

15

18

21

23

3

25

27

V.S.

29

31

33

36

39

42

45

49

51

54

HARMONICA

57

59

61

63

65

68

70

73

2

DRUMS

Leinemann - Mein Tuut Tuut 2

♩ = 124,000252

The image displays a drum score for the piece 'Mein Tuut Tuut 2' by Leinemann. The score is written in 4/4 time and begins with a tempo marking of 124,000252. The notation is organized into ten systems, each starting with a measure number (6, 9, 11, 13, 15, 17, 19, 21, 23). The notation uses a standard drum set layout: a double bar line with a vertical line to the left for the snare drum and a vertical line to the right for the bass drum. The snare drum part features a consistent pattern of eighth notes, often with 'x' marks above the notes to indicate cymbal accents. The bass drum part consists of a steady eighth-note pulse. The notation is presented on a single staff with a key signature of one sharp (F#).

V.S.

DRUMS

25

Musical notation for drum set at measure 25. The top staff shows a hi-hat pattern of eighth notes with 'x' marks. The bottom staff shows a bass drum pattern of quarter notes with 'x' marks.

27

Musical notation for drum set at measure 27. The top staff shows a hi-hat pattern of eighth notes with 'x' marks. The bottom staff shows a bass drum pattern of quarter notes with 'x' marks.

29

Musical notation for drum set at measure 29. The top staff shows a hi-hat pattern of eighth notes with 'x' marks. The bottom staff shows a bass drum pattern of quarter notes with 'x' marks.

31

Musical notation for drum set at measure 31. The top staff shows a hi-hat pattern of eighth notes with 'x' marks. The bottom staff shows a bass drum pattern of quarter notes with 'x' marks.

33

Musical notation for drum set at measure 33. The top staff shows a hi-hat pattern of eighth notes with 'x' marks. The bottom staff shows a bass drum pattern of quarter notes with 'x' marks.

35

Musical notation for drum set at measure 35. The top staff shows a hi-hat pattern of eighth notes with 'x' marks. The bottom staff shows a bass drum pattern of quarter notes with 'x' marks.

37

Musical notation for drum set at measure 37. The top staff shows a hi-hat pattern of eighth notes with 'x' marks. The bottom staff shows a bass drum pattern of quarter notes with 'x' marks.

39

Musical notation for drum set at measure 39. The top staff shows a hi-hat pattern of eighth notes with 'x' marks. The bottom staff shows a bass drum pattern of quarter notes with 'x' marks.

41

Musical notation for drum set at measure 41. The top staff shows a hi-hat pattern of eighth notes with 'x' marks. The bottom staff shows a bass drum pattern of quarter notes with 'x' marks.

43

Musical notation for drum set at measure 43. The top staff shows a hi-hat pattern of eighth notes with 'x' marks. The bottom staff shows a bass drum pattern of quarter notes with 'x' marks.

DRUMS

45

47

49

51

53

55

57

59

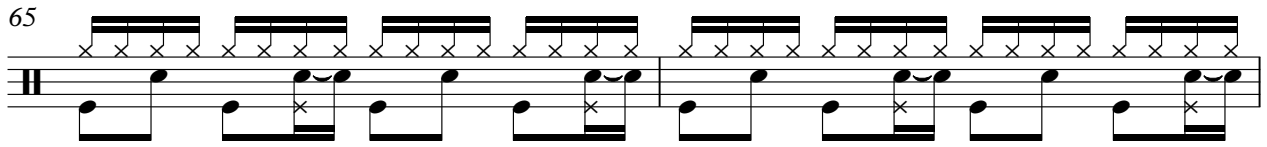
61

63

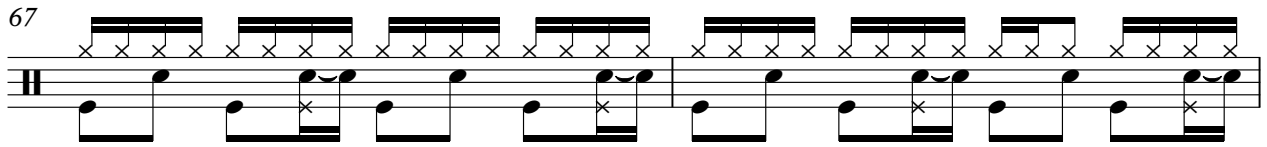
V.S.

DRUMS

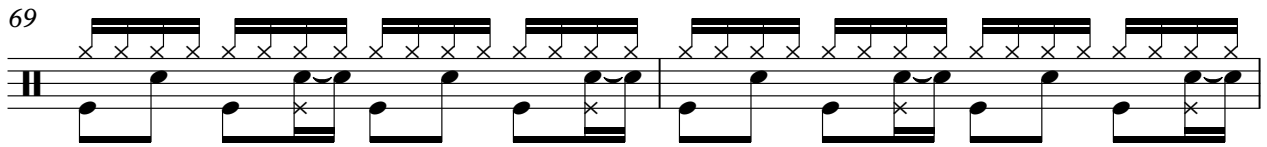
65



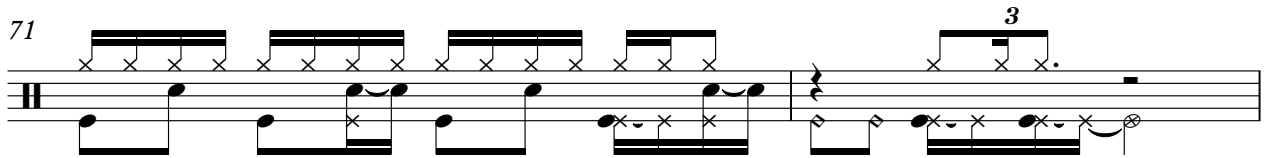
67



69

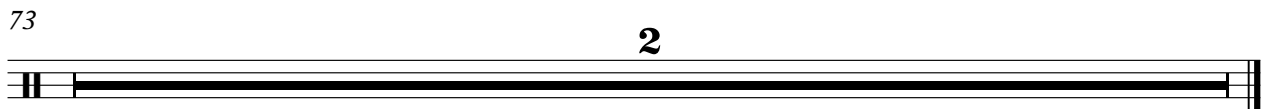


71



73

2



♩ = 124,000252

2

6

8

10

12

14

16

18

20

22



44

3

49

51

53

55

57

59

61

63

65

V.S.

4

STEEL GTR

67



69



71



73

2



♩ = 124,000252

11

16

20

24

28

32

35

38

42

4

Detailed description: This is a guitar score for the piece 'Mein Tuut Tuut 2' by Leinemann. It is written in 4/4 time with a tempo of 124,000252. The score consists of nine staves of music. The first staff starts with a whole rest, followed by a bar with a whole rest, and then four bars of chords. The second staff continues with four bars of chords. The third staff has four bars of chords. The fourth staff has four bars of chords, with the first two bars containing triplets. The fifth staff has four bars of chords, with the first two bars containing triplets. The sixth staff has four bars of chords, with the first two bars containing triplets. The seventh staff has four bars of chords, with the first two bars containing triplets. The eighth staff has four bars of chords, with the first two bars containing triplets. The ninth staff has four bars of chords, with the first two bars containing triplets and the last bar containing a whole rest.

2

JAZZ GTR

49

53

57

59

61

64

67

70

73

2

38



41



45



48



51



54



57



60



63



66



69



Leinemann - Mein Tuut Tuut 2

MELODY

♩ = 124,000252

7

12

15

18

21

24

27

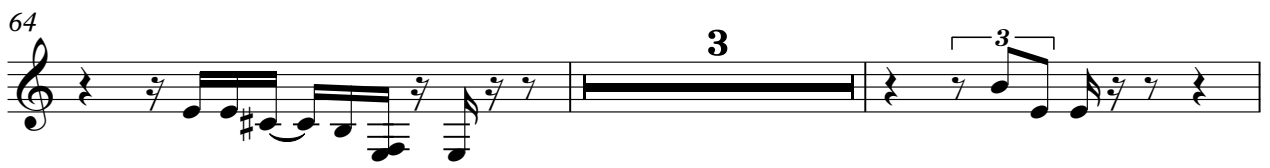
30

32

3

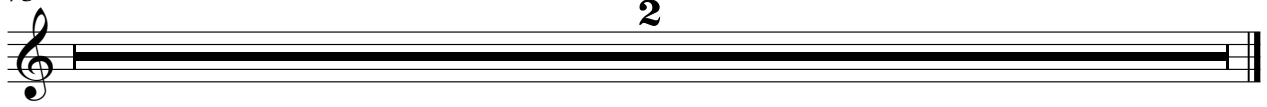
3

3



MELODY

73



A.PIANO 1

Leinemann - Mein Tuut Tuut 2

♩ = 124,000252

68

73

2