

Madonna - Papa Don't Preach

♩ = 127,000252

SYN STR 2

STRINGS

This system contains the first three measures of the score. The tempo is marked as ♩ = 127,000252. The top staff, labeled 'SYN STR 2', is in treble clef and the bottom staff, labeled 'STRINGS', is in bass clef. Both are in 4/4 time. The key signature has two flats (B-flat and E-flat). The music features complex chordal textures with many accidentals and slurs.



4

SYN STR 2

STRINGS

This system contains measure 4. The top staff is labeled 'SYN STR 2' and the bottom staff is labeled 'STRINGS'. The notation continues with complex chordal textures and slurs.



5

SYN STR 2

STRINGS

This system contains measures 5 and 6. The top staff is labeled 'SYN STR 2' and the bottom staff is labeled 'STRINGS'. The notation continues with complex chordal textures and slurs.



7

SYN STR 2

STRINGS

This system contains measure 7. The top staff is labeled 'SYN STR 2' and the bottom staff is labeled 'STRINGS'. The notation continues with complex chordal textures and slurs.



8

SYN STR 2

STRINGS

This system contains measure 8. The top staff is labeled 'SYN STR 2' and the bottom staff is labeled 'STRINGS'. The notation continues with complex chordal textures and slurs.

10

BASS DRUM

SNARE DRUM

SYNBASS 2

SYN STR 2

SWEEP PAD

STRINGS



12

BASS DRUM

SNARE DRUM

SYNBASS 2

SWEEP PAD

14

BASS DRUM

SNARE DRUM

SYNBASS 2

SWEEP PAD

Two musical systems for measures 14 and 15. The first system includes Bass Drum, Snare Drum, Synbass 2, and Sweep Pad. The second system includes Snare Drum, Synbass 2, and Sweep Pad. The notation shows various rhythmic values and accidentals.

16

BASS DRUM

SNARE DRUM

SYNBASS 2

SWEEP PAD

Two musical systems for measures 16 and 17. The first system includes Bass Drum, Snare Drum, Synbass 2, and Sweep Pad. The second system includes Snare Drum, Synbass 2, and Sweep Pad. The notation shows various rhythmic values and accidentals.

18

MELODY

BASS DRUM

SNARE DRUM

SYNBASS 2

SWEEP PAD

Two musical systems for measures 18 and 19. The first system includes Melody, Bass Drum, Snare Drum, Synbass 2, and Sweep Pad. The second system includes Snare Drum, Synbass 2, and Sweep Pad. The notation shows various rhythmic values and accidentals.

20

MELODY

BASS DRUM

SNARE DRUM

SYNBASS 2

SWEEP PAD



22

MELODY

BASS DRUM

SNARE DRUM

SYNBASS 2

SWEEP PAD

24

MELODY

BASS DRUM

SNARE DRUM

SYNBASS 2

SWEEP PAD



26

MELODY

BASS DRUM

SNARE DRUM

SYNBASS 2

SWEEP PAD

28

MELODY

BASS DRUM

SNARE DRUM

SYNBASS 2

SWEEP PAD



30

MELODY

BASS DRUM

SNARE DRUM

SYNBASS 2

SWEEP PAD

32

MELODY

BASS DRUM

SNARE DRUM

SYNBASS 2

SWEEP PAD



34

MELODY

BASS DRUM

SNARE DRUM

OPEN HIHAT

SYNBASS 2

SWEEP PAD

36

MELODY

BASS DRUM

SNARE DRUM

OPEN HIHAT

SYNBASS 2

SWEEP PAD



39

MELODY

BASS DRUM

SNARE DRUM

OPEN HIHAT

SYNBASS 2

SWEEP PAD

41

MELODY

BASS DRUM

SNARE DRUM

OPEN HIHAT

ACCORDION

SYNBASS 2

SWEEP PAD



43

MELODY

BASS DRUM

SNARE DRUM

OPEN HIHAT

ACCORDION

SYNBASS 2

SWEEP PAD

46

MELODY

BASS DRUM

SNARE DRUM

ACCORDION

SYNBASS 2

SWEEP PAD



49

MELODY

BASS DRUM

SNARE DRUM

OPEN HIHAT

ACCORDION

SYNBASS 2

SWEEP PAD

51

MELODY

BASS DRUM

SNARE DRUM

ACCORDION

SYNBASS 2

SWEEP PAD



53

MELODY

BASS DRUM

SNARE DRUM

SYNBASS 2

SWEEP PAD

55

MELODY

BASS DRUM

SNARE DRUM

SYNBASS 2

SWEEP PAD



57

MELODY

BASS DRUM

SNARE DRUM

SYNBASS 2

SWEEP PAD

59

MELODY

BASS DRUM

SNARE DRUM

SYNBASS 2

SWEEP PAD



61

MELODY

BASS DRUM

SNARE DRUM

OPEN HIHAT

SYNBASS 2

SWEEP PAD

64

MELODY

BASS DRUM

SNARE DRUM

OPEN HIHAT

SYNBASS 2

SWEEP PAD



66

MELODY

BASS DRUM

SNARE DRUM

OPEN HIHAT

SYNBASS 2

SWEEP PAD

68

MELODY

BASS DRUM

SNARE DRUM

ACCORDION

SYNBASS 2

SWEEP PAD



70

MELODY

BASS DRUM

SNARE DRUM

OPEN HIHAT

ACCORDION

SYNBASS 2

SWEEP PAD

73

MELODY

BASS DRUM

SNARE DRUM

ACCORDION

SYNBASS 2

SWEEP PAD



76

MELODY

BASS DRUM

SNARE DRUM

OPEN HIHAT

ACCORDION

SYNBASS 2

SWEEP PAD

78

MELODY

BASS DRUM

SNARE DRUM

SYNBASS 2

SWEEP PAD



80

MELODY

BASS DRUM

SNARE DRUM

SYNBASS 2

SWEEP PAD

82

MELODY

BASS DRUM

SNARE DRUM

SYNBASS 2

SWEEP PAD



84

MELODY

BASS DRUM

SNARE DRUM

SYNBASS 2

SWEEP PAD

86

MELODY

BASS DRUM

SNARE DRUM

OPEN HIHAT

SYN BASS 2

SWEEP PAD



88

MELODY

BASS DRUM

SNARE DRUM

OPEN HIHAT

SYN BASS 2

SWEEP PAD

90

MELODY

BASS DRUM

SNARE DRUM

OPEN HIHAT

SYNBASS 2

SWEEP PAD



92

MELODY

BASS DRUM

SNARE DRUM

OPEN HIHAT

SYNBASS 2

SWEEP PAD

94

MELODY

BASS DRUM

SNARE DRUM

OPEN HIHAT

ACCORDION

SYNBASS 2

SWEEP PAD



97

MELODY

BASS DRUM

SNARE DRUM

OPEN HIHAT

ACCORDION

SYNBASS 2

SWEEP PAD

99

MELODY

BASS DRUM

SNARE DRUM

ACCORDION

SYNBASS 2

SWEEP PAD



102

MELODY

BASS DRUM

SNARE DRUM

ACCORDION

SYNBASS 2

SWEEP PAD

104

MELODY

BASS DRUM

SNARE DRUM

OPEN HIHAT

ACCORDION

SYNBASS 2

SWEEP PAD



107

MELODY

BASS DRUM

SNARE DRUM

OPEN HIHAT

ACCORDION

SYNBASS 2

SWEEP PAD

109

MELODY

BASS DRUM

SNARE DRUM

ACCORDION

SYNBASS 2

SWEEP PAD



111

MELODY

BASS DRUM

SNARE DRUM

OPEN HIHAT

ACCORDION

SYNBASS 2

SWEEP PAD

113

MELODY

BASS DRUM

SNARE DRUM

ACCORDION

SYNBASS 2

SWEEP PAD



115

MELODY

BASS DRUM

SNARE DRUM

OPEN HIHAT

ACCORDION

SYNBASS 2

SWEEP PAD

117

MELODY

BASS DRUM

SNARE DRUM

ACCORDION

SYNBASS 2

SWEEP PAD



119

MELODY

BASS DRUM

SNARE DRUM

OPEN HIHAT

ACCORDION

SYNBASS 2

SWEEP PAD

121

MELODY

BASS DRUM

SNARE DRUM

ACCORDION

SYNBASS 2

SYN STR 2

SWEEP PAD

STRINGS



123

SYN STR 2

STRINGS



125

SYN STR 2

STRINGS

127

SYN STR 2

STRINGS



129

SYN STR 2

STRINGS

Madonna - Papa Don`t Preach

MELODY

♩ = 127,000252



V.S.



MELODY

102

106

110

114

118

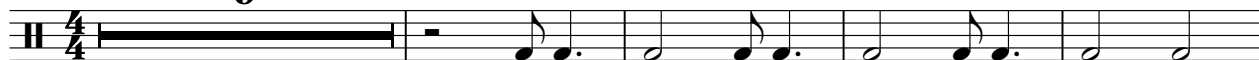
121

BASS DRUM

Madonna - Papa Don`t Preach

♩ = 127,000252

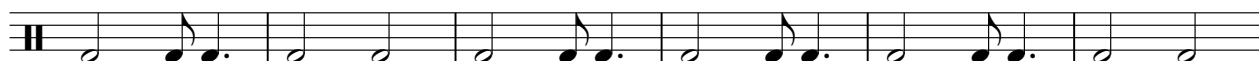
9



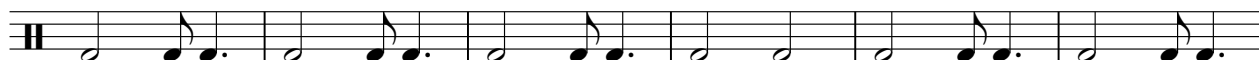
14



20



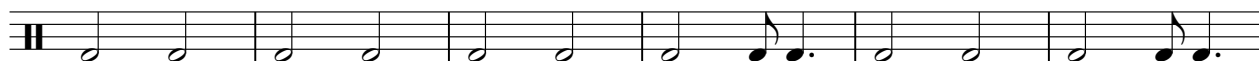
26



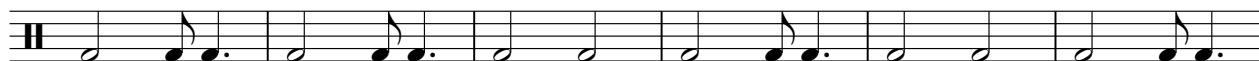
32



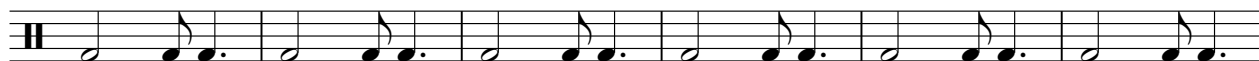
39



45



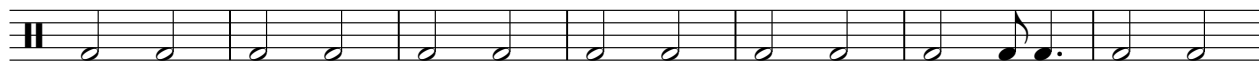
51



57



63



V.S.

SNARE DRUM

Madonna - Papa Don't Preach

♩ = 127,000252

9



14



20



26



32



38



44



50



56



62



V.S.

68



74



80



86



92



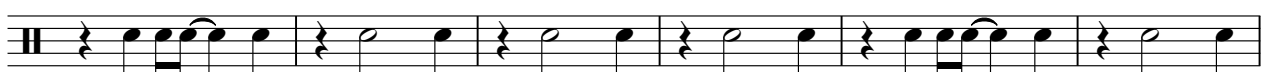
98



104



110



116



120



OPEN HIHAT

Madonna - Papa Don't Preach

♩ = 127,000252

34

39

50

64

71

89

95

108

116

ACCORDION

Madonna - Papa Don't Preach

♩ = 127,000252

41

45 2

51 16

71 2

77 18

99 2

105

110

115

119 9

♩ = 127,000252

9

12

14

16

18

20

22

24

26

28

SYNBASS 2

30 Musical notation for measure 30, bass clef, featuring a sequence of eighth notes with various accidentals (flats and sharps).

32 Musical notation for measure 32, bass clef, featuring a sequence of eighth notes with various accidentals (flats and sharps).

34 Musical notation for measure 34, bass clef, featuring a sequence of eighth notes with various accidentals (flats and sharps).

37 Musical notation for measure 37, bass clef, featuring a sequence of eighth notes with various accidentals (flats and sharps).

40 Musical notation for measure 40, bass clef, featuring a sequence of eighth notes with various accidentals (flats and sharps).

43 Musical notation for measure 43, bass clef, featuring a sequence of eighth notes with various accidentals (flats and sharps).

46 Musical notation for measure 46, bass clef, featuring a sequence of eighth notes with various accidentals (flats and sharps).

49 Musical notation for measure 49, bass clef, featuring a sequence of eighth notes with various accidentals (flats and sharps).

52 Musical notation for measure 52, bass clef, featuring a sequence of eighth notes with various accidentals (flats and sharps).

54 Musical notation for measure 54, bass clef, featuring a sequence of eighth notes with various accidentals (flats and sharps).

SYNBASS 2

3

56

58

60

63

66

69

72

75

78

80

V.S.

SYNBASS 2

82

84

86

89

92

95

98

102

105

108



♩ = 127,000252

5

8

10 **111**

123

126

128

Madonna - Papa Don't Preach

SWEEP PAD

♩ = 127,000252
9

14
21
28
35
42
48
53
60
66

V.S.

SWEEP PAD

72

78

84

90

97

104

110

116

120

STRINGS

Madonna - Papa Don't Preach

♩ = 127,000252

4

6

8

11

110

123

125

127

129