

Mega Man 3 - Magnet Man

♩ = 135,000137

Percussion

Harmony

Bass

Melody

3

Percussion

Harmony

Bass

Melody

2

5

Percussion

Harmony

Bass

Melody

7

Percussion

Harmony

Bass

Melody

9

Percussion

Harmony

Bass

Melody

11

Percussion

Harmony

Bass

Melody

13

Percussion

Harmony

Bass

Melody

15

Percussion

Harmony

Bass

Melody

17

Percussion

Harmony

Bass

Melody

18

Percussion

Harmony

Bass

Melody

20

Percussion

Harmony

Bass

Melody

22

Percussion

Harmony

Bass

Melody

24

Percussion

Harmony

Bass

Melody

26

Percussion

Harmony

Bass

Melody

28

Percussion

Harmony

Bass

Melody

30

Percussion

Harmony

Bass

Melody

32

Percussion

Harmony

Bass

Melody

34

Percussion

Harmony

Bass

Melody

36

Percussion

Harmony

Bass

Melody

37

Percussion

Harmony

Bass

Melody

39

Percussion

Harmony

Bass

Melody

41

Percussion

Harmony

Bass

Melody

43

Percussion

Harmony

Bass

Melody

45

Percussion

Harmony

Bass

Melody

47

Percussion

Harmony

Bass

Melody

49

Percussion

Harmony

Bass

Melody

Percussion

A single staff of music with a percussion clef. It contains four quarter notes, each with a vertical line through its stem, indicating a percussive sound. The notes are positioned on the first line of the staff.

Harmony

A staff of music with a treble clef. It begins with a quarter rest, followed by a sequence of eighth notes and chords. The notes are: F#4, G4, A4, B4, C5, B4, A4, G4, F#4. There are slurs over the first two notes and the last two notes.

Bass

A staff of music with a bass clef. It begins with a quarter rest, followed by a sequence of eighth notes and chords. The notes are: F#3, G3, A3, B3, C4, B3, A3, G3, F#3. There are slurs over the first two notes and the last two notes.

Melody

A staff of music with a bass clef. It begins with a quarter rest, followed by a sequence of eighth notes and chords. The notes are: F#3, G3, A3, B3, C4, B3, A3, G3, F#3. There are slurs over the first two notes and the last two notes.

Percussion

Mega Man 3 - Magnet Man

♩ = 135,000137



V.S.

Mega Man 3 - Magnet Man

Harmony

♩ = 135,000137

4

7

11

14

16

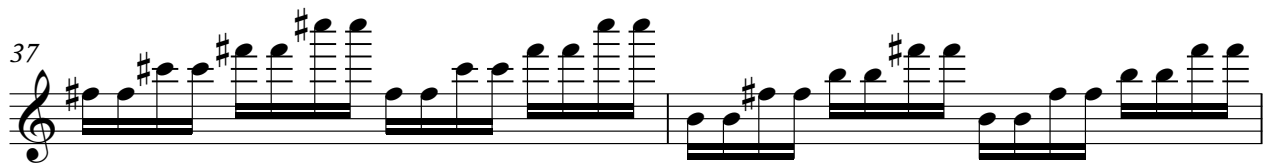
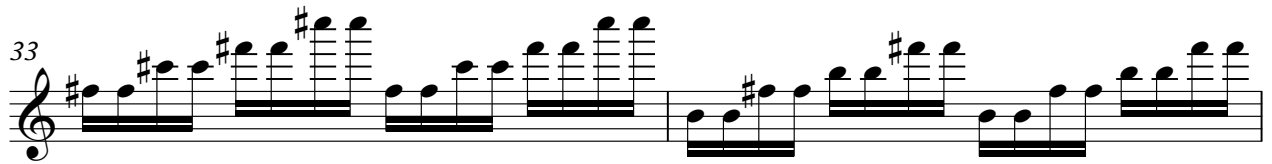
18

20

22

24

V.S.



Mega Man 3 - Magnet Man

Bass

$\text{♩} = 135,000137$

4

7

9

11

13

16

19

22

24

V.S.

Bass

26

Two musical staves in bass clef. The first staff contains measures 26 and 27. Measure 26 has a key signature of one sharp (F#) and a common time signature. It features a rhythmic pattern of eighth notes with stems pointing up, followed by a quarter rest. Measure 27 continues this pattern with a key signature change to two sharps (F# and C#).

28

Two musical staves in bass clef. The first staff contains measures 28 and 29. Measure 28 has a key signature of two sharps (F# and C#) and a common time signature. It features a rhythmic pattern of eighth notes with stems pointing up, followed by a quarter rest. Measure 29 continues this pattern with a key signature change to one sharp (F#).

30

Two musical staves in bass clef. The first staff contains measures 30 and 31. Measure 30 has a key signature of one sharp (F#) and a common time signature. It features a rhythmic pattern of eighth notes with stems pointing up, followed by a quarter rest. Measure 31 continues this pattern with a key signature change to two sharps (F# and C#).

32

Two musical staves in bass clef. The first staff contains measures 32 and 33. Measure 32 has a key signature of two sharps (F# and C#) and a common time signature. It features a rhythmic pattern of eighth notes with stems pointing up, followed by a quarter rest. Measure 33 continues this pattern with a key signature change to one sharp (F#). The second staff contains measure 34, which features a more complex rhythmic pattern with eighth notes and quarter notes, including a key signature change to one sharp (F#).

35

Two musical staves in bass clef. The first staff contains measures 35 and 36. Measure 35 has a key signature of one sharp (F#) and a common time signature. It features a rhythmic pattern of eighth notes with stems pointing up, followed by a quarter rest. Measure 36 continues this pattern with a key signature change to two sharps (F# and C#). The second staff contains measure 37, which features a more complex rhythmic pattern with eighth notes and quarter notes, including a key signature change to one sharp (F#).

38

Two musical staves in bass clef. The first staff contains measures 38 and 39. Measure 38 has a key signature of one sharp (F#) and a common time signature. It features a rhythmic pattern of eighth notes with stems pointing up, followed by a quarter rest. Measure 39 continues this pattern with a key signature change to two sharps (F# and C#). The second staff contains measure 40, which features a more complex rhythmic pattern with eighth notes and quarter notes, including a key signature change to one sharp (F#).

41

Two musical staves in bass clef. The first staff contains measures 41 and 42. Measure 41 has a key signature of one sharp (F#) and a common time signature. It features a rhythmic pattern of eighth notes with stems pointing up, followed by a quarter rest. Measure 42 continues this pattern with a key signature change to two sharps (F# and C#).

43

Two musical staves in bass clef. The first staff contains measures 43 and 44. Measure 43 has a key signature of two sharps (F# and C#) and a common time signature. It features a rhythmic pattern of eighth notes with stems pointing up, followed by a quarter rest. Measure 44 continues this pattern with a key signature change to one sharp (F#).

45

Two musical staves in bass clef. The first staff contains measures 45 and 46. Measure 45 has a key signature of one sharp (F#) and a common time signature. It features a rhythmic pattern of eighth notes with stems pointing up, followed by a quarter rest. Measure 46 continues this pattern with a key signature change to two sharps (F# and C#).

47

Two musical staves in bass clef. The first staff contains measures 47 and 48. Measure 47 has a key signature of two sharps (F# and C#) and a common time signature. It features a rhythmic pattern of eighth notes with stems pointing up, followed by a quarter rest. Measure 48 continues this pattern with a key signature change to one sharp (F#).

49 Bass 3

49 Bass 3

51

51

Mega Man 3 - Magnet Man

Melody

♩ = 135,000137

4

8

12

15

18

21

24

27

31

V.S.

2

Melody

34

37

40

43

46

49