

# Metallica - Disposable Heroes

♩ = 172,003555

DRUMS

E.GUITAR 2

A.BASS 2

This system shows the first two measures of the piece. The drum part starts with a 4/4 time signature and a rest, then changes to 6/4 for the second measure. The guitar and bass parts also follow this time signature change. The guitar part features a series of power chords in the second measure, and the bass part has a complex rhythmic pattern with many sixteenth notes.

3

DRUMS

E.GUITAR 2

A.BASS 2

This system covers measures 3 and 4. The drum part continues with a similar pattern, including three asterisks above the staff in each measure. The guitar part has a rest in measure 3 and then plays power chords in measure 4. The bass part maintains its rhythmic complexity.

5

DRUMS

E.GUITAR 2

A.BASS 2

This system covers measures 5 and 6. In measure 5, the drum part has a triplet of eighth notes followed by a quarter note. The guitar part has a rest in measure 5 and then plays power chords in measure 6. The bass part continues with its rhythmic pattern.

7

DRUMS

E.GUITAR 2

A.BASS 2

This system covers measures 7 and 8. The drum part continues with its pattern, including three asterisks above the staff in each measure. The guitar part has a rest in measure 7 and then plays power chords in measure 8. The bass part continues with its rhythmic pattern.

9

DRUMS

E.GUITAR 2

A.BASS 2

11

DRUMS

E.GUITAR 2

A.BASS 2

13

DRUMS

E.GUITAR 2

A.BASS 2

14

DRUMS

E.GUITAR 2

A.BASS 2

16

DRUMS

E.GUITAR 2

A.BASS 2

18

DRUMS

E.GUITAR 2

A.BASS 2

23

DRUMS

A.BASS 2

27

DRUMS

A.BASS 2

29

DRUMS

A.BASS 2

The image displays a musical score for two instruments: DRUMS and A. BASS 2, spanning measures 31 to 41. The score is organized into six systems, each containing a drum staff and a bass staff. The drum staff uses a standard notation with 'x' marks for cymbals and stems for other drums. The bass staff uses a bass clef and contains a complex rhythmic pattern of eighth and sixteenth notes. The key signature is one flat (Bb), and the time signature is 4/4. Measure 31 starts with a drum hit marked with an asterisk. Measures 33, 35, 37, and 39 feature various drum patterns, including cymbal hits and snare/drum hits. Measure 37 includes a triplet of eighth notes in the bass line. Measure 41 features a triplet of eighth notes in the bass line and a cymbal hit in the drum line.

31

DRUMS

A. BASS 2

33

DRUMS

A. BASS 2

35

DRUMS

A. BASS 2

37

DRUMS

A. BASS 2

39

DRUMS

A. BASS 2

41

DRUMS

A. BASS 2

43

DRUMS

A.BASS 2

Drum notation for measures 43-44. Measure 43: snare on 1, 3, 5; bass drum on 2, 4. Measure 44: snare on 1, 3, 5; bass drum on 2, 4. Bass notation for measures 43-44: eighth-note patterns with accents.

45

DRUMS

A.BASS 2

Drum notation for measures 45-46. Measure 45: snare on 1, 3, 5; bass drum on 2, 4. Measure 46: snare on 1, 3, 5; bass drum on 2, 4. Bass notation for measures 45-46: eighth-note patterns with accents.

47

DRUMS

A.BASS 2

Drum notation for measures 47-48. Measure 47: snare on 1, 3, 5; bass drum on 2, 4. Measure 48: snare on 1, 3, 5; bass drum on 2, 4. Bass notation for measures 47-48: eighth-note patterns with accents.

49

DRUMS

A.BASS 2

Drum notation for measures 49-50. Measure 49: snare on 1, 3, 5; bass drum on 2, 4. Measure 50: snare on 1, 3, 5; bass drum on 2, 4. Bass notation for measures 49-50: eighth-note patterns with accents.

51

DRUMS

E.GUITAR 2

A.BASS 2

Drum notation for measures 51-52. Measure 51: snare on 1, 3, 5; bass drum on 2, 4. Measure 52: snare on 1, 3, 5; bass drum on 2, 4. Guitar notation for measures 51-52: sustained chords. Bass notation for measures 51-52: eighth-note patterns with accents.

53

DRUMS

E.GUITAR 2

A.BASS 2

Measures 53-54. Drums: Snare and bass drum pattern. E.Guitar 2: Sustained chords. A.Bass 2: Eighth-note bass line.

55

DRUMS

E.GUITAR 2

A.BASS 2

Measures 55-56. Drums: Snare and bass drum pattern. E.Guitar 2: Sustained chords. A.Bass 2: Eighth-note bass line.

57

DRUMS

E.GUITAR 2

A.BASS 2

Measures 57-59. Drums: Snare and bass drum pattern. E.Guitar 2: Chordal progression with a 6th fret barre. A.Bass 2: Eighth-note bass line.

60

DRUMS

A.BASS 2

Measures 60-61. Drums: Snare and bass drum pattern. A.Bass 2: Eighth-note bass line.

62

DRUMS

A.BASS 2

Measures 62-63. Drums: Snare and bass drum pattern. A.Bass 2: Eighth-note bass line.

64

DRUMS

A.BASS 2

66

DRUMS

MELODY 1

A.BASS 2

68

DRUMS

MELODY 1

A.BASS 2

70

DRUMS

MELODY 1

A.BASS 2

Detailed description of the musical score: The score is divided into four systems, each covering two measures.   
 - System 1 (Measures 64-65): Drums play a consistent pattern of eighth notes with 'x' marks above them. A. Bass 2 plays a steady eighth-note bass line.   
 - System 2 (Measures 66-67): Drums continue the pattern. Melody 1 enters in measure 67 with a triplet of eighth notes. A. Bass 2 continues its bass line.   
 - System 3 (Measures 68-69): Drums continue the pattern. Melody 1 continues with eighth notes and a triplet. A. Bass 2 continues its bass line.   
 - System 4 (Measures 70-71): Drums continue the pattern. Melody 1 has a triplet in measure 70 and then continues. A. Bass 2 continues its bass line.

72

DRUMS

MELODY 1

A.BASS 2

74

DRUMS

MELODY 1

A.BASS 2

76

DRUMS

MELODY 1

A.BASS 2

78

DRUMS

MELODY 1

A.BASS 2



80

DRUMS

MELODY 1

A.BASS 2

82

DRUMS

MELODY 1

E.GUITAR 2

A.BASS 2

84

DRUMS

MELODY 1

E.GUITAR 2

A.BASS 2

86

DRUMS

MELODY 1

E.GUITAR 2

A.BASS 2

88

DRUMS

MELODY 1

E.GUITAR 2

A.BASS 2

90

DRUMS

MELODY 1

E.GUITAR 2

A.BASS 2

92

DRUMS

MELODY 1

E.GUITAR 2

A.BASS 2

94

DRUMS

MELODY 1

E.GUITAR 2

A.BASS 2

96

DRUMS

MELODY 1

E.GUITAR 2

A.BASS 2

98

DRUMS

MELODY 1

E.GUITAR 2

A.BASS 2

100

DRUMS

E.GUITAR 2

A.BASS 2

102

DRUMS

E.GUITAR 2

A.BASS 2

104

DRUMS

E.GUITAR 2

A.BASS 2

106

DRUMS

E.GUITAR 2

A.BASS 2

108

DRUMS

E.GUITAR 2

A.BASS 2

110

DRUMS

E.GUITAR 2

A.BASS 2

112

DRUMS

MELODY 1

E.GUITAR 2

A.BASS 2

114

DRUMS

MELODY 1

E.GUITAR 2

A.BASS 2

116

DRUMS

MELODY 1

E.GUITAR 2

A.BASS 2

118

DRUMS

MELODY 1

E.GUITAR 2

A.BASS 2

120

DRUMS

MELODY 1

E.GUITAR 2

A.BASS 2

122

DRUMS

MELODY 1

E.GUITAR 2

A.BASS 2

124

DRUMS

MELODY 1

A.BASS 2

127

DRUMS

MELODY 1

A.BASS 2

129

DRUMS

MELODY 1

A.BASS 2

131

DRUMS

MELODY 1

A.BASS 2

133

DRUMS

MELODY 1

A.BASS 2

135

DRUMS

MELODY 1

A.BASS 2



137

DRUMS

MELODY 1

A.BASS 2

139

DRUMS

MELODY 1

A.BASS 2

141

DRUMS

MELODY 1

E.GUITAR 2

A.BASS 2

143

DRUMS

MELODY 1

E.GUITAR 2

A.BASS 2

145

DRUMS

MELODY 1

E.GUITAR 2

A.BASS 2

147

DRUMS

MELODY 1

E.GUITAR 2

A.BASS 2

149

DRUMS

MELODY 1

E.GUITAR 2

A.BASS 2

151

DRUMS

MELODY 1

E.GUITAR 2

A.BASS 2

153

DRUMS

MELODY 1

E.GUITAR 2

A.BASS 2

155

DRUMS

MELODY 1

E.GUITAR 2

A.BASS 2

157

DRUMS

MELODY 1

E.GUITAR 2

A.BASS 2

159

DRUMS

E.GUITAR 2

A.BASS 2

161

DRUMS

E.GUITAR 2

A.BASS 2

163

DRUMS

E.GUITAR 2

A.BASS 2

165

DRUMS

E.GUITAR 2

A.BASS 2

167

DRUMS

E.GUITAR 2

A.BASS 2

169

DRUMS

E.GUITAR 2

A.BASS 2

171

DRUMS

MELODY 1

E.GUITAR 2

A.BASS 2

173

DRUMS

MELODY 1

E.GUITAR 2

A.BASS 2

175

DRUMS

MELODY 1

E.GUITAR 2

A.BASS 2

177

DRUMS

MELODY 1

E.GUITAR 2

A.BASS 2

179

DRUMS

MELODY 1

E.GUITAR 2

A.BASS 2

181

DRUMS

MELODY 1

E.GUITAR 2

A.BASS 2

183

DRUMS

A.BASS 2

186

DRUMS

E.GUITAR 2

A.BASS 2

188

DRUMS

E.GUITAR 2

A.BASS 2

190

DRUMS

E.GUITAR 2

A.BASS 2

192

DRUMS

E.GUITAR 2

A.BASS 2

194

DRUMS

MELODY 1

E.GUITAR 2

A.BASS 2



196

DRUMS

MELODY 1

E.GUITAR 2

A.BASS 2

198

DRUMS

MELODY 1

E.GUITAR 2

A.BASS 2

200

DRUMS

MELODY 1

E.GUITAR 2

A.BASS 2

202

DRUMS

MELODY 1

E.GUITAR 2

A.BASS 2

204

DRUMS

E.GUITAR 2

A.BASS 2

206

DRUMS

E.GUITAR 2

A.BASS 2

208

DRUMS

E.GUITAR 2

A.BASS 2

210

DRUMS

E.GUITAR 2

A.BASS 2

212

DRUMS

E.GUITAR 2

A.BASS 2

214

DRUMS

E.GUITAR 2

A.BASS 2

216

DRUMS

E.GUITAR 2

A.BASS 2

218

DRUMS

E.GUITAR 2

A.BASS 2

221

DRUMS

E.GUITAR 2

A.BASS 2

224

DRUMS

E.GUITAR 2

A.BASS 2

226

DRUMS

E.GUITAR 2

A.BASS 2

229

DRUMS

E.GUITAR 2

A.BASS 2

231

DRUMS

E.GUITAR 2

A.BASS 2

233

DRUMS

E.GUITAR 2

A.BASS 2

235

DRUMS

E.GUITAR 2

A.BASS 2

236

DRUMS

E.GUITAR 2

A.BASS 2

237

DRUMS

E.GUITAR 2

A.BASS 2

239

DRUMS

E.GUITAR 2

A.BASS 2

241

DRUMS

E.GUITAR 2

A.BASS 2

243

DRUMS

E.GUITAR 2

A.BASS 2

245

DRUMS

E.GUITAR 2

A.BASS 2

247

DRUMS

E.GUITAR 2

A.BASS 2

249

DRUMS

E.GUITAR 2

A.BASS 2

251

DRUMS

E.GUITAR 2

A.BASS 2

253

DRUMS

E.GUITAR 2

A.BASS 2

255

DRUMS

E.GUITAR 2

A.BASS 2

257

DRUMS

MELODY 1

E.GUITAR 2

A.BASS 2



259

DRUMS

MELODY 1

E.GUITAR 2

A.BASS 2

Detailed description: This system covers measures 259 and 260. The drums part features a consistent pattern of eighth notes with 'x' marks above them, indicating muffled hits. The melody part starts with eighth notes, followed by a quarter note, and ends with a triplet of eighth notes. The electric guitar part consists of two long, horizontal oval shapes, representing sustained chords. The bass part features a steady eighth-note rhythm.

261

DRUMS

MELODY 1

E.GUITAR 2

A.BASS 2

Detailed description: This system covers measures 261 and 262. The drums part continues with eighth notes and 'x' marks. The melody part has a quarter note, eighth notes, and a triplet of eighth notes. The electric guitar part has two long, horizontal oval shapes. The bass part maintains its eighth-note rhythm.

263

DRUMS

MELODY 1

E.GUITAR 2

A.BASS 2

Detailed description: This system covers measures 263 and 264. The drums part has eighth notes with 'x' marks. The melody part includes eighth notes, a quarter note, and a triplet of eighth notes. The electric guitar part has two long, horizontal oval shapes. The bass part continues with eighth notes.

265

DRUMS

MELODY 1

E.GUITAR 2

A.BASS 2

266

267

DRUMS

MELODY 1

A.BASS 2

268

269

270

DRUMS

MELODY 1

E.GUITAR 2

A.BASS 2

271

272

DRUMS

E.GUITAR 2

A.BASS 2

273

274

DRUMS

E.GUITAR 2

A.BASS 2

276

DRUMS

E.GUITAR 2

A.BASS 2

279

DRUMS

MELODY 1

A.BASS 2

281

DRUMS

MELODY 1

A.BASS 2

283

DRUMS

MELODY 1

A.BASS 2

285

DRUMS

MELODY 1

A.BASS 2

287

DRUMS

MELODY 1

A.BASS 2

289

DRUMS

MELODY 1

A.BASS 2

291

DRUMS

MELODY 1

A.BASS 2

293

DRUMS

MELODY 1

A.BASS 2

295

DRUMS

MELODY 1

E.GUITAR 2

A.BASS 2

297

DRUMS

MELODY 1

E.GUITAR 2

A.BASS 2

299

DRUMS

MELODY 1

E.GUITAR 2

A.BASS 2

301

DRUMS

MELODY 1

E.GUITAR 2

A.BASS 2

303

DRUMS

MELODY 1

E.GUITAR 2

A.BASS 2

305

DRUMS

MELODY 1

E.GUITAR 2

A.BASS 2

307

DRUMS

MELODY 1

E.GUITAR 2

A.BASS 2

309

DRUMS

MELODY 1

E.GUITAR 2

A.BASS 2

311

DRUMS

MELODY 1

E.GUITAR 2

A.BASS 2

Measures 311-312. Drums: 4/4 time, steady 8th-note pattern. Melody 1: 4/4 time, mostly rests. E.Guitar 2: 4/4 time, sustained chord with a '3' marking. A.Bass 2: 4/4 time, steady 8th-note pattern.

313

DRUMS

E.GUITAR 2

A.BASS 2

Measures 313-314. Drums: 3/4 time, steady 8th-note pattern. E.Guitar 2: 3/4 time, sustained chord with a '3' marking. A.Bass 2: 3/4 time, steady 8th-note pattern.

315

DRUMS

E.GUITAR 2

A.BASS 2

Measures 315-316. Drums: 4/4 time, steady 8th-note pattern. E.Guitar 2: 4/4 time, sustained chord with a '3' marking. A.Bass 2: 4/4 time, steady 8th-note pattern.

317

DRUMS

E.GUITAR 2

A.BASS 2

Measures 317-318. Drums: 3/4 time, steady 8th-note pattern. E.Guitar 2: 3/4 time, sustained chord with a '3' marking. A.Bass 2: 3/4 time, steady 8th-note pattern.



320

DRUMS

E.GUITAR 2

A.BASS 2

322

DRUMS

E.GUITAR 2

A.BASS 2

325

DRUMS

MELODY 1

E.GUITAR 2

A.BASS 2

327

DRUMS

MELODY 1

E.GUITAR 2

A.BASS 2

329

DRUMS

MELODY 1

E.GUITAR 2

A.BASS 2

331

DRUMS

MELODY 1

E.GUITAR 2

A.BASS 2

333

DRUMS

MELODY 1

E.GUITAR 2

A.BASS 2

335

DRUMS

MELODY 1

E.GUITAR 2

A.BASS 2

337

DRUMS

MELODY 1

E.GUITAR 2

A.BASS 2

339

DRUMS

E.GUITAR 2

A.BASS 2

341

DRUMS

MELODY 1

E.GUITAR 2

A.BASS 2

343

DRUMS

E.GUITAR 2

A.BASS 2

345

DRUMS

MELODY 1

E.GUITAR 2

A.BASS 2

347

DRUMS

E.GUITAR 2

A.BASS 2

349

DRUMS

MELODY 1

E.GUITAR 2

A.BASS 2

351

DRUMS

E.GUITAR 2

A.BASS 2

353

DRUMS

MELODY 1

E.GUITAR 2

A.BASS 2

355

DRUMS

E.GUITAR 2

A.BASS 2

357

DRUMS

E.GUITAR 2

A.BASS 2

359

DRUMS

E.GUITAR 2

A.BASS 2

361

DRUMS

E.GUITAR 2

A.BASS 2

363

DRUMS

E.GUITAR 2

A.BASS 2

365

DRUMS

E.GUITAR 2

A.BASS 2

367

DRUMS

E.GUITAR 2

A.BASS 2

369

DRUMS

E.GUITAR 2

A.BASS 2

374

DRUMS

E.GUITAR 2

A.BASS 2

376

DRUMS

E.GUITAR 2

A.BASS 2

378

DRUMS

E.GUITAR 2

A.BASS 2



DRUMS

Metallica - Disposable Heroes

♩ = 172,003555

The drum notation is presented across ten staves, each starting with a measure number (4, 7, 10, 13, 16, 20, 26, 31, 36). The notation includes various rhythmic patterns such as eighth notes, sixteenth notes, and triplets, along with dynamic markings like asterisks and vertical lines. The time signature changes from 4/4 to 6/4 and back to 4/4. The notation is written on a grand staff with a double bar line on the left side of each staff.

V.S.

DRUMS

40

Musical notation for drum part 40-43. The top staff shows a series of 'x' marks representing drum hits. The bottom staff shows the corresponding bass and snare drum notes. A triplet of eighth notes is marked with a '3' below it.

44

Musical notation for drum part 44-47. Similar to the previous system, showing drum hits and notes. A triplet of eighth notes is marked with a '3' below it.

48

Musical notation for drum part 48-51. Similar to the previous system. A tempo marking  $\text{♩} = 188,005264$  is placed above the staff.

52

Musical notation for drum part 52-54. Similar to the previous system.

55

Musical notation for drum part 55-58. Similar to the previous system.

60

Musical notation for drum part 60-63. Similar to the previous system. A triplet of eighth notes is marked with a '3' below it.

64

Musical notation for drum part 64-67. Similar to the previous system. Two triplet markings are present, one above and one below the staff.

68

Musical notation for drum part 68-71. Similar to the previous system.

72

Musical notation for drum part 72-75. Similar to the previous system.

76

Musical notation for drum part 76-79. Similar to the previous system.

DRUMS

Drum notation for measures 80 through 116. The notation is presented on a grand staff with a double bar line on the left. The top staff contains the drum part, with 'x' marks indicating hits. The bottom staff contains the bass line. Measure numbers 80, 84, 88, 92, 96, 100, 104, 108, 112, and 116 are placed at the beginning of their respective systems. Time signatures 3/4 and 4/4 are indicated. Triplet markings (3) are used in measures 104, 108, 112, and 116. The notation includes various rhythmic patterns such as eighth notes, quarter notes, and eighth rests.

V.S.

DRUMS

120

Musical notation for drum set from measure 120 to 123. It features a bass drum line with eighth notes and triplets, and a snare drum line with eighth notes and rests. Measure 120 starts with a 7/8 time signature and changes to 6/8 by measure 123.

124

Musical notation for drum set from measure 124 to 127. It features a bass drum line with eighth notes and triplets, and a snare drum line with eighth notes and rests. Measure 124 starts with a 7/8 time signature and changes to 2/4 by measure 125, then to 4/4 by measure 127.

128

Musical notation for drum set from measure 128 to 131. It features a bass drum line with eighth notes and rests, and a snare drum line with eighth notes and rests. Measure 128 starts with a 6/8 time signature and changes to 4/4 by measure 131.

132

Musical notation for drum set from measure 132 to 135. It features a bass drum line with eighth notes and rests, and a snare drum line with eighth notes and rests. Measure 132 starts with a 4/4 time signature and changes to 3/4 by measure 135.

136

Musical notation for drum set from measure 136 to 139. It features a bass drum line with eighth notes and rests, and a snare drum line with eighth notes and rests. Measure 136 starts with a 4/4 time signature and changes to 3/4 by measure 139.

140

Musical notation for drum set from measure 140 to 143. It features a bass drum line with eighth notes and rests, and a snare drum line with eighth notes and rests. Measure 140 starts with a 4/4 time signature and changes to 3/4 by measure 143.

144

Musical notation for drum set from measure 144 to 147. It features a bass drum line with eighth notes and rests, and a snare drum line with eighth notes and rests. Measure 144 starts with a 3/4 time signature and changes to 4/4 by measure 147.

148

Musical notation for drum set from measure 148 to 151. It features a bass drum line with eighth notes and rests, and a snare drum line with eighth notes and rests. Measure 148 starts with a 3/4 time signature and changes to 4/4 by measure 151.

152

Musical notation for drum set from measure 152 to 155. It features a bass drum line with eighth notes and rests, and a snare drum line with eighth notes and rests. Measure 152 starts with a 3/4 time signature and changes to 4/4 by measure 155.

156

Musical notation for drum set from measure 156 to 159. It features a bass drum line with eighth notes and rests, and a snare drum line with eighth notes and rests. Measure 156 starts with a 3/4 time signature and changes to 4/4 by measure 159.

DRUMS

160

164

168

172

176

180

183

186

Musical notation for drum part 186, measures 186-189. The staff is in 4/4 time. It features a mix of eighth and sixteenth notes, with two triplet markings (3) over eighth notes in measures 187 and 188. Above the staff, asterisks indicate specific drum hits.

190

Musical notation for drum part 190, measures 190-194. The staff is in 4/4 time. It features a mix of eighth and sixteenth notes, with a triplet marking (3) over eighth notes in measure 191. Above the staff, asterisks indicate specific drum hits.

195

Musical notation for drum part 195, measures 195-199. The staff is in 4/4 time. It features a mix of eighth and sixteenth notes, with two triplet markings (3) over eighth notes in measures 196 and 199. Above the staff, asterisks indicate specific drum hits.

200

Musical notation for drum part 200, measures 200-203. The staff is in 4/4 time. It features a mix of eighth and sixteenth notes, with a triplet marking (3) over eighth notes in measure 201. Above the staff, asterisks indicate specific drum hits.

204

Musical notation for drum part 204, measures 204-208. The staff is in 4/4 time. It features a mix of eighth and sixteenth notes, with a triplet marking (3) over eighth notes in measure 205. Above the staff, asterisks indicate specific drum hits.

209

Musical notation for drum part 209, measures 209-212. The staff is in 4/4 time. It features a mix of eighth and sixteenth notes, with a triplet marking (3) over eighth notes in measure 209. Above the staff, asterisks indicate specific drum hits.

213

Musical notation for drum part 213, measures 213-217. The staff is in 4/4 time. It features a mix of eighth and sixteenth notes, with a triplet marking (3) over eighth notes in measure 214. Above the staff, asterisks indicate specific drum hits.

218

Musical notation for drum part 218, measures 218-222. The staff is in 4/4 time. It features a mix of eighth and sixteenth notes, with a triplet marking (3) over eighth notes in measure 219. Above the staff, asterisks indicate specific drum hits.

223

Musical notation for drum part 223, measures 223-226. The staff is in 4/4 time. It features a mix of eighth and sixteenth notes, with two triplet markings (3) over eighth notes in measures 224 and 225. Above the staff, asterisks indicate specific drum hits.

227

Musical notation for drum part 227, measures 227-230. The staff is in 4/4 time. It features a mix of eighth and sixteenth notes, with a triplet marking (3) over eighth notes in measure 227. Above the staff, asterisks indicate specific drum hits.

DRUMS

232

Musical notation for drum set 232. The staff shows a sequence of notes with 'x' marks above them, indicating specific drum hits. The notation includes eighth and sixteenth notes, with a triplet of eighth notes at the end of the line.

237

Musical notation for drum set 237. The staff shows a sequence of notes with 'x' marks above them. It includes a triplet of eighth notes at the beginning of the line.

242

Musical notation for drum set 242. The staff shows a sequence of notes with 'x' marks above them, including a triplet of eighth notes.

247

Musical notation for drum set 247. The staff shows a sequence of notes with 'x' marks above them, including a triplet of eighth notes.

251

Musical notation for drum set 251. The staff shows a sequence of notes with 'x' marks above them, featuring three triplet markings over eighth notes.

255

Musical notation for drum set 255. The staff shows a sequence of notes with 'x' marks above them, including a triplet of eighth notes.

260

Musical notation for drum set 260. The staff shows a sequence of notes with 'x' marks above them, including a triplet of eighth notes.

264

Musical notation for drum set 264. The staff shows a sequence of notes with 'x' marks above them, including a triplet of eighth notes and a change in time signature from 7/8 to 4/4.

269

273

276

281

285

289

293

297

301

305



DRUMS

309

312

315

318

322

326

330

334

338

342

V.S.

346

Musical notation for drum set, measures 346-349. Features a mix of eighth and sixteenth notes with 'x' marks above notes indicating cymbal hits. Includes triplet markings over groups of three notes.

350

Musical notation for drum set, measures 350-353. Similar to the previous system, with eighth and sixteenth notes and cymbal hits. Includes triplet markings.

354

Musical notation for drum set, measures 354-356. Features a steady eighth-note pattern with cymbal hits marked with 'x'.

357

Musical notation for drum set, measures 357-359. Includes a dotted quarter note followed by eighth notes and cymbal hits.

360

Musical notation for drum set, measures 360-362. Features eighth-note patterns with cymbal hits.

363

Musical notation for drum set, measures 363-365. Includes eighth-note patterns and a dotted quarter note.

366

Musical notation for drum set, measures 366-369. Features eighth-note patterns with cymbal hits and a final double bar line.

370

Musical notation for drum set, measures 370-375. Includes a half-note pattern with cymbal hits and a final eighth-note pattern.

376

Musical notation for drum set, measures 376-377. Features eighth-note patterns with cymbal hits.

378

Musical notation for drum set, measures 378-381. Includes eighth-note patterns with triplet markings and a final double bar line.

# Metallica - Disposable Heroes

## MELODY 1

♩ = 172,003555 ♩ = 188,005264

**17** **32** **16**

67

70

73

76

79

82

86

91

96

MELODY 1

101

2 2 2 5

113

117

121

126

129

132

135

138

141

145

150

155

160

172

176

180

185

196

200

258

262

266

271

281

284

287

290

293

297

301

305

310

319

328

332

336

342

350

E.GUITAR 2

Metallica - Disposable Heroes

♩ = 172,003555

6

10

14

19

32

♩ = 188,005264

57

24

86

94

102

109

V.S.



113

117

121

126

**16**

148

156

163

168

172

176

180

185

193

201

208

215

222

229

237

245

V.S.

253

260

271

278

299

307

315

321

325

329

333

337

341

345

349

353

362

370

376

A.BASS 2

Metallica - Disposable Heroes

♩ = 172,003555

2

A.BASS 2

22

27

30

32

34

36

38

40

42

44

46



48



50

♩ = 188,005264



52



54



56



59



62



64



66



V.S.

68



71



74



77



80



82



84



87



89



92





95



97



100



103



106



110



115



120



124



127



V.S.

130



133



136



139



141



143



146



148



151



154



156

159

162

165

169

174

179

183

186

189

V.S.

192



195



198



201



204



207



210



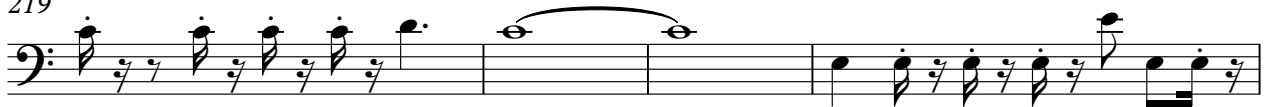
213



216



219



223



Musical notation for measure 223, featuring a bass clef and a series of eighth notes with stems pointing down, followed by a quarter note.

226



Musical notation for measure 226, featuring a bass clef, eighth notes with stems pointing down, a half note with a slur, and a quarter note.

231



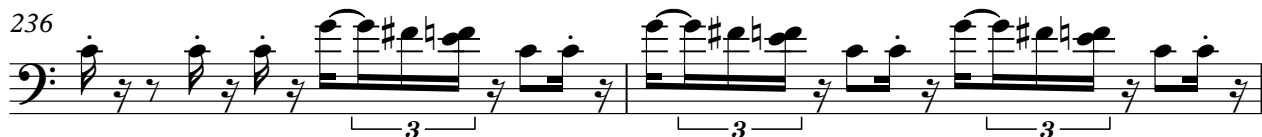
Musical notation for measure 231, featuring a bass clef and a series of eighth notes with stems pointing down, followed by a quarter note.

234



Musical notation for measure 234, featuring a bass clef, eighth notes with stems pointing down, and three groups of beamed eighth notes with a '3' below them, indicating triplets.

236



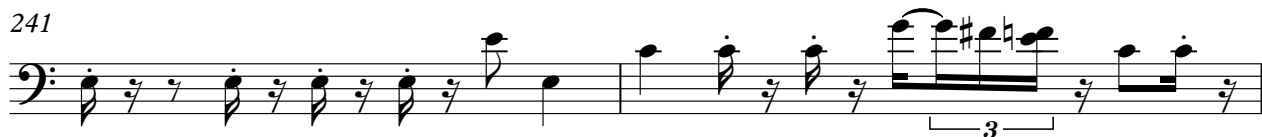
Musical notation for measure 236, featuring a bass clef, eighth notes with stems pointing down, and three groups of beamed eighth notes with a '3' below them, indicating triplets.

238



Musical notation for measure 238, featuring a bass clef and a series of eighth notes with stems pointing down, followed by a quarter note.

241



Musical notation for measure 241, featuring a bass clef, eighth notes with stems pointing down, and a group of beamed eighth notes with a '3' below them, indicating a triplet.

243



Musical notation for measure 243, featuring a bass clef, eighth notes with stems pointing down, and three groups of beamed eighth notes with a '3' below them, indicating triplets.

245



Musical notation for measure 245, featuring a bass clef, eighth notes with stems pointing down, and two groups of beamed eighth notes with a '3' below them, indicating triplets.

247



Musical notation for measure 247, featuring a bass clef and a series of eighth notes with stems pointing down, followed by a quarter note.

V.S.

250



253



256



259



262



265



271



273



275



278



281



284



287



290



293



295



297



300



303



305



V.S.

308

311

314

317

321

325

329

333

337

341



345



349



353



355



357



359



361



363



365



367



V.S.

14

A.BASS 2

370

Musical notation for measure 370 in bass clef. The measure begins with a quarter rest. It then contains five notes: G#2 (quarter), A2 (quarter), B2 (quarter), C#3 (quarter), and a slur over D#3 (quarter) and E3 (quarter).

375

Musical notation for measure 375 in bass clef. The measure consists of a continuous eighth-note pattern: G#2, A2, B2, C#3, D#3, E3, D#3, C#3, B2, A2, G#2.

377

Musical notation for measure 377 in bass clef. The measure consists of a continuous eighth-note pattern: G#2, A2, B2, C#3, D#3, E3, D#3, C#3, B2, A2, G#2. The measure ends with a quarter rest.

379

Musical notation for measure 379 in bass clef. The measure begins with a quarter rest. It then contains four notes: G#2 (quarter), A2 (quarter), B2 (quarter), and C#3 (quarter). The measure ends with a quarter rest.