

Bee Gees - Words

0.0"
 1.1,00
 Copyright © Tune 1000 Corp. All Rights Reserved. Music by Bee Gees (BMI). Int'l Rights Sec

♩ = 82,000038

Clarinet in B♭

Horn in F

Percussion

Jazz Guitar

Fretless Electric Bass

Viola

Solo

3

Cl.

J. Gtr.

E. Bass

Solo

6

Cl.

J. Gtr.

E. Bass

Solo

9

Cl.

J. Gtr.

E. Bass

Solo

12

Cl.

J. Gtr.

E. Bass

Solo

15

Cl.

J. Gtr.

E. Bass

Solo

18

Cl.

J. Gtr.

E. Bass

Solo

21

Cl.

Perc.

E. Bass

Vla.

Solo

24

Cl.
Perc.
E. Bass
Vla.
Solo

This musical system covers measures 24 and 25. It features five staves: Clarinet (Cl.), Percussion (Perc.), Electric Bass (E. Bass), Viola (Vla.), and Solo guitar. The key signature is one sharp (F#). The Clarinet part begins with a whole rest in measure 24, followed by a melodic line in measure 25. The Percussion part has a consistent rhythmic pattern of eighth notes with 'x' marks above them. The Electric Bass part plays a steady eighth-note line. The Viola part has a few notes in measure 24 and a long sustain in measure 25. The Solo guitar part consists of chords in measure 24 and a complex, multi-measure solo in measure 25.

26

Cl.
Perc.
E. Bass
Vla.
Solo

This musical system covers measures 26 and 27. It features the same five staves as the previous system. The Clarinet part has a melodic line in measure 26 and a whole rest in measure 27. The Percussion part continues its rhythmic pattern. The Electric Bass part plays a steady eighth-note line. The Viola part has a few notes in measure 26 and a whole rest in measure 27. The Solo guitar part consists of chords in measure 26 and a complex, multi-measure solo in measure 27.

28

Cl. Perc. E. Bass Vla. Solo

Detailed description: This system contains measures 28 and 29. The Clarinet (Cl.) part starts with a whole rest in measure 28, followed by a melodic line in measure 29. The Percussion (Perc.) part features a consistent rhythmic pattern of eighth notes with 'x' marks above them, indicating cymbal hits. The Electric Bass (E. Bass) part plays a steady eighth-note line. The Viola (Vla.) part has a few notes in measure 28 and a long, sustained note in measure 29. The Solo part consists of a dense, multi-voice texture with many notes in both measures.

30

Cl. Perc. E. Bass Vla. Solo

Detailed description: This system contains measures 30 and 31. The Clarinet (Cl.) part has a melodic line in measure 30 and a whole rest in measure 31. The Percussion (Perc.) part continues with its rhythmic pattern, ending with a cymbal crash in measure 31. The Electric Bass (E. Bass) part has a melodic line in measure 30 and a whole rest in measure 31. The Viola (Vla.) part has a few notes in measure 30 and a whole rest in measure 31. The Solo part continues with its dense texture, ending with a whole rest in measure 31.

33

Cl.
Hn.
Perc.
E. Bass
Vla.
Solo

Detailed description: This system of music covers measures 33, 34, and 35. The Clarinet (Cl.) part features a melodic line with eighth and sixteenth notes. The Horn (Hn.) part has a sparse accompaniment with quarter and half notes. The Percussion (Perc.) part consists of a steady eighth-note pattern with 'x' marks above the notes. The Electric Bass (E. Bass) part has a walking bass line with eighth notes. The Viola (Vla.) part is mostly silent, with a few notes in measure 35. The Solo part features a series of chords, some with triplets, in the right hand.

36

Cl.
Perc.
E. Bass
Vla.
Solo

Detailed description: This system of music covers measures 36, 37, and 38. The Clarinet (Cl.) part has a melodic line with a triplet in measure 37. The Percussion (Perc.) part continues with a steady eighth-note pattern. The Electric Bass (E. Bass) part has a walking bass line with a sextuplet in measure 37. The Viola (Vla.) part has a melodic line with a long slur across measures 37 and 38. The Solo part features a series of chords, some with triplets, in the right hand.

38

Cl.
Perc.
E. Bass
Vla.
Solo

40

Cl.
Perc.
E. Bass
Vla.
Solo

42

Cl.
Perc.
E. Bass
Vla.
Solo

Detailed description: This system of musical notation covers measures 42 and 43. The Clarinet (Cl.) part is in treble clef with a key signature of one sharp (F#) and a 7/8 time signature. The Percussion (Perc.) part is in a drum set notation. The Electric Bass (E. Bass) part is in bass clef with a key signature of one sharp. The Viola (Vla.) part is in bass clef with a key signature of one sharp. The Solo part is in treble clef with a key signature of one sharp and includes guitar tablature below the staff. The music features a mix of eighth and sixteenth notes, with some syncopation in the 7/8 time signature.

44

Cl.
Hn.
Perc.
E. Bass
Vla.
Solo

Detailed description: This system of musical notation covers measures 44 and 45. The Clarinet (Cl.) part is in treble clef with a key signature of one sharp. The Horn (Hn.) part is in treble clef with a key signature of one sharp. The Percussion (Perc.) part is in a drum set notation. The Electric Bass (E. Bass) part is in bass clef with a key signature of one sharp and includes a triplet of eighth notes in measure 44. The Viola (Vla.) part is in bass clef with a key signature of one sharp. The Solo part is in treble clef with a key signature of one sharp and includes guitar tablature below the staff. The music continues with various rhythmic patterns and melodic lines.

46

Cl.
Hn.
Perc.
E. Bass
Vla.
Solo

Detailed description: This system of music covers measures 46 and 47. The Clarinet (Cl.) part starts with a quarter note G4, followed by eighth notes A4, B4, and C5, then a half note B4. The Horn (Hn.) part has a half note G4. The Percussion (Perc.) part features a complex rhythmic pattern with eighth notes and rests, marked with 'x' for specific sounds. The Electric Bass (E. Bass) part has a steady eighth-note line. The Viola (Vla.) part has a whole note chord in measure 46 and a long, sustained whole note chord in measure 47. The Solo part consists of a dense, multi-voice texture of eighth notes and chords.

48

Cl.
Hn.
Perc.
E. Bass
Vla.
Solo

Detailed description: This system of music covers measures 48, 49, and 50. The Clarinet (Cl.) part has a melodic line starting with a quarter rest, followed by quarter notes G4, A4, B4, and eighth notes C5, B4, A4, G4. The Horn (Hn.) part has a whole note G4. The Percussion (Perc.) part continues with its rhythmic pattern. The Electric Bass (E. Bass) part has a steady eighth-note line. The Viola (Vla.) part has a whole note chord in measure 48 and quarter notes G4, A4, B4 in measures 49 and 50. The Solo part features a series of chords and single notes, with some notes marked with 'x' for specific sounds.

51

Cl.
Hn.
Perc.
E. Bass
Vla.
Solo

Detailed description: This system of music covers measures 51, 52, and 53. The Clarinet (Cl.) part begins with a half note G4, followed by a quarter rest, then a quarter note A4, and a quarter note B4. The Horn (Hn.) part has a whole rest in measure 51 and 52, then a quarter note G4, a quarter note A4, and a quarter note B4 in measure 53. The Percussion (Perc.) part features a rhythmic pattern of eighth notes with 'x' marks above them, indicating a specific sound effect. The Electric Bass (E. Bass) part plays a sequence of notes: G2, A2, B2, C3, D3, E3, F3, G3, A3, B3, C4, D4, E4, F4, G4, A4, B4. The Viola (Vla.) part has a whole rest in measure 51 and 52, then a quarter note G2, a quarter note A2, and a quarter note B2 in measure 53. The Solo part features a complex melodic line with many beamed notes and rests.

54

♩ = 78,999969 ♩ = 75,99

Cl.
Hn.
Perc.
E. Bass
Vla.
Solo

Detailed description: This system of music covers measures 54, 55, and 56. The Clarinet (Cl.) part starts with a quarter note G4, a quarter note A4, a quarter note B4, and a quarter note C5. The Horn (Hn.) part has a whole rest in measure 54 and 55, then a quarter note G4, a quarter note A4, and a quarter note B4 in measure 56. The Percussion (Perc.) part continues with the eighth-note pattern. The Electric Bass (E. Bass) part plays a sequence of notes: G2, A2, B2, C3, D3, E3, F3, G3, A3, B3, C4, D4, E4, F4, G4, A4, B4. The Viola (Vla.) part has a whole rest in measure 54 and 55, then a quarter note G2, a quarter note A2, and a quarter note B2 in measure 56. The Solo part features a complex melodic line with many beamed notes and rests.

57 $\text{♩} = 72,999985$ $\text{♩} = 69,000015$ $\text{♩} = 63,000020$ $\text{♩} = 75,999969$

Cl.

J. Gtr.

E. Bass

Vla.

Solo

60 $\text{♩} = 69,000015$ $\text{♩} = 69,999973$

J. Gtr.

E. Bass

Vla.

Solo

$\text{♩} = 60,999973$

$\text{♩} = 69,000015$

J. Gtr. TAB

5	5	5	12	12	12	12
5	5	5	14	14	14	14
0	4	0			0	0

E. Bass

Vla.

Solo

Bee Gees - Words

Clarinet in B \flat

$\text{♩} = 82,000038$

4

9

14

19

25

30

35

Clarinet in B \flat

41



46



51



56

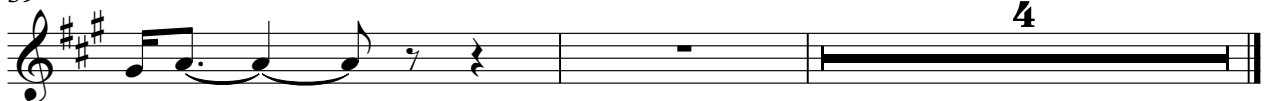
$\text{♩} = 78,999969$ $\text{♩} = 75,999969$ $\text{♩} = 72,999985$ $\text{♩} = 69,999992$ $\text{♩} = 65,999992$



59

$\text{♩} = 75,999969$

$\text{♩} = 69,000015 = 60,999$



Horn in F

Bee Gees - Words

♩ = 82,000038

32 8

44

4

54

♩ = 78,000069 ♩ = 69,000073

2 4

Bee Gees - Words

Percussion

♩ = 82,000038

20

23

26

29

33

36

39

42

45

49

V.S.

2

Percussion

53

56

♩ = 78, 0 9975, 0 9990 6972, 0 990856, 0 99592900, 0 000969

♩ = 69, 0 060, 0 99973

Bee Gees - Words

Jazz Guitar

♩ = 82,000038

5

5 5 5 5 5 5 5 5 | 5 5 5 5 5 5 5 5 | 5 5 5 5 5 5 5 5 | 5 5 5 5 5 5 5 5

5 5 5 5 5 5 5 5 | 5 5 5 5 5 5 5 5 | 5 5 5 5 5 5 5 5 | 5 5 5 5 5 5 5 5

4 4 4 4 4 4 4 4 | 4 4 4 4 4 4 4 4 | 4 4 4 4 4 4 4 4 | 4 4 4 4 4 4 4 4

9

5 5 5 5 5 5 5 5 | 5 5 5 5 5 5 5 5 | 7 7 7 7 7 7 7 7 | 7 7 7 7 7 7 7 7

5 5 5 5 5 5 5 5 | 5 5 5 5 5 5 5 5 | 7 7 7 7 7 7 7 7 | 7 7 7 7 7 7 7 7

4 4 4 4 4 4 4 4 | 4 4 4 4 4 4 4 4 | 6 6 6 6 6 6 6 6 | 6 6 6 6 6 6 6 6

13

0 0 0 0 0 0 0 0 | 0 0 0 0 0 0 0 0 | 2 2 5 5 5 5 5 5 | 6 0 5 5 5 6 0 0 5 5

0 0 0 0 0 0 0 0 | 0 3 0 0 0 0 0 0 | 3 3 7 5 5 5 5 5 | 5 5 5 5 2 2 2 2 5 5

5 5 5 5 5 5 5 5 | 5 5 5 5 5 5 5 5 | 5 4 4 4 4 4 4 4 | 4 4 4 4 4 4 4 4

17

8 3 8 3 8 0 0 8 8 | 8 8 8 8 0 0 8 8 8 3 8 | 3 3 3 3 0 0 | 0 3 0 0 0 0 0 0 3

5 5 5 5 5 8 7 7 | 7 7 7 7 7 7 5 5 8 | 2 2 2 2 5 | 5 2 5 2 2 2 2

20

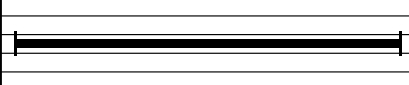
5 0 5 5 5 5 5 0 0 | 0 0 5 0 0 5 5 5 0 0 | 2 2 7 2 2 2 7 2 2

5 5 5 5 5 8 2 | 2 2 5 2 2 5 5 5 2 2 | 4 4 7 4 4 4 4 4 4

4 4 4 4 4 4 4 4 | 4 4 4 4 4 4 4 4 | 6

25

♩ = 78,999969 ♩ = 72,999985

0 0 0 0 0 0 0 0 |  | 5 5 5 5 5 5 5 5

0 0 0 0 0 0 0 0 | _____ | 0 5 5 5 5 5 5 5

5 5 5 5 5 5 5 5 | _____ | 0 4 4 4 4 4 4 4

58

♩ = 69,999950 ♩ = 65,999920 ♩ = 75,999969

0 0 5 5 5 5 5 5 | 5 5 5 5 5 5 5 5 | 5 5 5 5 5 5 5 5

0 0 5 5 5 5 2 2 | 2 2 2 2 5 2 2 2 | 0 0 0 0 0 0 0 0

4 4 0 0 4 0 4 0 | 0 4 0 0 4 0 0 0 | 0 0 0 0 0 0 0 0

0 0

61

♩ = 69,000019 ♩ = 73

5 3 5 5 5 5 5 | 5 5 5 12 12 | 12 | 12

3 3 3 3 5 2 2 5 5 | 5 5 5 14 14 | 14 | 14

4 0 0 4 0 0 4 0 | 0 4 0 0 | 0 | 0

5

♩ = 82,000038

2



9



16



21



26



30



35



40



45



50



V.S.

2

Fretless Electric Bass

55

♩ = 78, 9975699969 74, 998892992, 6000069

Musical notation for fretless electric bass, measures 55-59. The notation is on a single bass staff with a key signature of one sharp (F#). Measure 55 contains a quarter note G#2, a quarter note A2, a quarter note B2, and a quarter note C3. Measure 56 contains a quarter note D3, a quarter note E3, a quarter note F#3, and a quarter note G3. Measure 57 contains a quarter note A3, a quarter note B3, a quarter note C4, and a quarter note D4. Measure 58 contains a quarter note E4, a quarter note F#4, a quarter note G4, and a quarter note A4. Measure 59 contains a quarter note B4, a quarter note C5, a quarter note D5, and a quarter note E5. The piece ends with a double bar line.

60

♩ = 69, 60, 999973

Musical notation for fretless electric bass, measures 60-64. The notation is on a single bass staff with a key signature of one sharp (F#). Measure 60 contains a quarter note G#2, a quarter note A2, a quarter note B2, and a quarter note C3. Measure 61 contains a quarter note D3, a quarter note E3, a quarter note F#3, and a quarter note G3. Measure 62 contains a quarter note A3, a quarter note B3, a quarter note C4, and a quarter note D4. Measure 63 contains a quarter note E4, a quarter note F#4, a quarter note G4, and a quarter note A4. Measure 64 contains a quarter note B4, a quarter note C5, a quarter note D5, and a quarter note E5. The piece ends with a double bar line.

Bee Gees - Words

Viola

♩ = 82,000038

20

26

35

40

45

53

♩ = 78,9999699969 ♩ = 78,9999699969

60

♩ = 60,999973

♩ = 69,000015

Bee Gees - Words

Solo

♩ = 82,000038

4

8

13

17

21

25

28

31

35

V.S.

Solo

39

42

45

48

53

♩ = 78,99996972,999999920

59

62

♩ = 75,999969

♩ = 69,0000199973