

# Mr Big - To Be With You

♩ = 83,000183

DRUMS

STEEL GTR

STEEL GTR

STEEL GTR

FRETLESS

MELODY

E.PIANO 1

SYNVOX

5

DRUMS

STEEL GTR

STEEL GTR

FRETLESS

MELODY

DRUMS

STEEL GTR

STEEL GTR

T	2	2	2	2	2	2	2	2	2	2	2	2	2	2	2	2	2	2	2
A	0	0	0	1	2	2	1	1	0	2	2	2	1	1	1	2	1	1	2
B	0	0	0	2	2	2	2	2	0	2	2	2	2	2	2	2	2	2	2

FRETLESS

MELODY



DRUMS

STEEL GTR

STEEL GTR

T	2	0	2	2	2	2	2	2	4	4	0	4	4	4	4	4	4	4
A	0	7	2	2	2	1	2	2	6	0	5	0	5	0	0	0	2	2
B	7	0	0	0	2	2	2	2	0	0	0	0	0	0	0	0	0	0

FRETLESS

MELODY

11

DRUMS

STEEL GTR

STEEL GTR

FRETLESS

MELODY

E.PIANO 1

TAB notation for Steel Guitar:

T	4	4	1 4	4	4	4	2	2	2	2	2	4	2
A	2	6 2	6 6	6 6	6 6	2	2	2	0	2	2	4	2
B	4	4	4 4	4 4	4 4	1	1	1	1	2	2	2	2
	2	4	2 2	2 2	2	2	2	2	0	0	0	2	
	?					2	2	2	2	2	2		



13

DRUMS

STEEL GTR

STEEL GTR

FRETLESS

MELODY

E.PIANO 1

TAB notation for Steel Guitar:

T	1	5	1	2	2	2	2	2	2	2	2	2	2
A	2	6	2	1	2	2	2	2	2	2	4	0	4
B	2	4	4	0	2	2	2	2	2	2	2	2	2
	2	2	2	2	2	2	2	2	2	2	2	2	2
				2	2	2	2	2	2	2	2	2	2



19

DRUMS

STEEL GTR

STEEL GTR

FRETLESS

MELODY

E.PIANO 1

SYNVOX

1 4 2 2 6 8 2 2 2  
 2 6 2 2 7 7 2 2 2  
 4 4 1 1 6 6 1 1 2 2 2  
 2 2 2 2 4 4 2 2 2 2 2  
 . . . . . ? . . . . .



21

DRUMS

STEEL GTR

STEEL GTR

FRETLESS

MELODY

2 2 2 2 2 2 2 2 2 6 6 2 2 2  
 0 0 0 0 4 1 1 1 4 7 7 2 2 2  
 2 2 2 2 2 2 2 2 6 6 6 1 1 1 2 2 2  
 0 0 2 2 2 2 2 2 4 4 4 2 2 2 2 2 2  
 .

DRUMS

STEEL GTR

STEEL GTR

FRETLESS

MELODY

The score for page 23, measures 1-4, features a drum part with a steady 2/4 beat. The steel guitar part consists of two systems: the top system shows chordal accompaniment with some melodic lines, and the bottom system provides a detailed tablature for the strings. The fretless part has a melodic line with a triplet in the second measure. The melody part is a simple line in the key of D major.



DRUMS

STEEL GTR

STEEL GTR

FRETLESS

MELODY

The score for page 25, measures 1-4, continues the musical piece. The drum part maintains the 2/4 rhythm. The steel guitar part shows more complex chordal textures and a new section of tablature. The fretless part continues its melodic line. The melody part features a more active line with eighth notes and some grace notes.

27

DRUMS

STEEL GTR

STEEL GTR

FRETLESS

MELODY

E.PIANO 1

SYNVOX

4 4 1 4 4 4 2 2 2 2 2 2 2 2 4 2  
 2 6 2 6 6 6 2 2 0 2 2 0 4 2  
 4 4 4 4 4 4 1 1 1 1 2 2 2 2  
 2 2 4 4 4 4 2 2 2 2 0 0 0 2  
 ?



29

DRUMS

STEEL GTR

STEEL GTR

FRETLESS

MELODY

E.PIANO 1

SYNVOX

1 5 1 2 2 2 2 2 2 2 2 2 2 2 2 2  
 2 6 2 2 2 2 2 2 2 2 2 2 2 2 2 2  
 4 4 4 0 1 1 1 1 1 1 2 2 2 2 2 2  
 2 2 2 2 2 2 2 2 2 2 2 2 2 2 2 2

31

DRUMS

STEEL GTR

STEEL GTR

T	1	4	4	2	2	2	2	2	2	2	2	2	2	2	2	2	2
A	2	4	4	2	2	2	2	2	2	2	2	2	2	2	2	2	2
B	2	2	2	2	2	2	2	2	2	2	2	2	2	2	2	2	2

FRETLESS

MELODY

E.PIANO 1

SYNVOX



33

DRUMS

STEEL GTR

STEEL GTR

T	4	4	2	2	2	2	2	2	2	2	2	2	2	2	2	2	2
A	4	8	4	1	1	2	1	1	2	2	2	2	2	2	2	2	2
B	2	2	9	2	2	2	2	2	2	2	2	2	2	2	2	2	2

FRETLESS

MELODY

E.PIANO 1

SYNVOX



35

DRUMS

STEEL GTR

STEEL GTR

T	1	4	2	2	2	2	2	0	2	2	2	2
A	4	4	1	1	2	2	2	2	2	2	2	0
B	2	2	2	2	2	2	0	0	2	2	0	0

FRETLESS

MELODY

E.PIANO 1

SYNVOX



37

DRUMS

STEEL GTR

STEEL GTR

T	0	6	6	6	5	5	5	5	5
A	11	7	4	7	7	2	0	0	0
B	9	6	6	6	0	0	0	0	0
B	4	6	4	6	9	2	2	2	2
B	6	4	4	4	9	5	5	5	5

FRETLESS

MELODY

DRUMS

STEEL GTR

STEEL GTR

STEEL GTR

TAB

FRETLESS

MELODY



DRUMS

STEEL GTR

STEEL GTR

STEEL GTR

TAB

FRETLESS

43

DRUMS

STEEL GTR

STEEL GTR

STEEL GTR

T  
A  
B

FRETLESS

T	2	4	4	2	2	2	2	2	2	2	2	2	2	2	2
A	4	4	4	2	2	1	1	1	1	2	2	2	0	0	4
B	2	2	4	2	2	2	2	2	2	2	2	2	2	2	0



45

DRUMS

STEEL GTR

STEEL GTR

STEEL GTR

T  
A  
B

FRETLESS

T	2	4	2	4	2	6	6	2	2	2	2	2	2	2	2
A	4	4	4	0	6	6	7	1	1	2	2	2	0	0	4
B	2	2	2	0	4	4	4	2	2	2	2	2	0	0	0



51

DRUMS

STEEL GTR

STEEL GTR

T  
A  
B

FRETLESS

MELODY

Detailed description of page 51: This page contains a musical score for measures 51-55. It features five staves: DRUMS (top), STEEL GTR (treble clef), STEEL GTR (TAB), FRETLESS (bass clef), and MELODY (treble clef). The key signature has two sharps (F# and C#). The drum part shows a consistent pattern of eighth notes. The steel guitar part includes chords and single notes. The fretless guitar part has a simple bass line. The melody part is a single-line treble clef line with various note values and accidentals.



52

DRUMS

STEEL GTR

STEEL GTR

T  
A  
B

FRETLESS

MELODY

E.PIANO 1

Detailed description of page 52: This page contains a musical score for measures 56-60. It features six staves: DRUMS (top), STEEL GTR (treble clef), STEEL GTR (TAB), FRETLESS (bass clef), MELODY (treble clef), and E.PIANO 1 (bass clef). The key signature has two sharps. The drum part features a more complex pattern with accents. The steel guitar part includes chords and single notes. The fretless guitar part has a simple bass line. The melody part is a single-line treble clef line. The electric piano part has a simple bass line.

53

DRUMS

STEEL GTR

STEEL GTR

FRETLESS

MELODY

E.PIANO 1

SYNVOX

TAB for STEEL GTR (Measures 53-54):

5	0	5	0	0	0	0	0	5	2	2	5	5	5	5	2	2	2	2	2
0	0	0	0	0	0	0	0	0	0	0	0	0	0	0	0	0	0	0	0
0	0	0	0	0	0	0	0	0	0	0	0	0	0	0	0	0	0	0	0
0	0	0	0	0	0	0	0	0	0	0	0	0	0	0	0	0	0	0	0
0	0	0	0	0	0	0	0	0	0	0	0	0	0	0	0	0	0	0	0
0	0	0	0	0	0	0	0	0	0	0	0	0	0	0	0	0	0	0	0
0	0	0	0	0	0	0	0	0	0	0	0	0	0	0	0	0	0	0	0
0	0	0	0	0	0	0	0	0	0	0	0	0	0	0	0	0	0	0	0
0	0	0	0	0	0	0	0	0	0	0	0	0	0	0	0	0	0	0	0
0	0	0	0	0	0	0	0	0	0	0	0	0	0	0	0	0	0	0	0



55

DRUMS

STEEL GTR

STEEL GTR

FRETLESS

MELODY

E.PIANO 1

SYNVOX

TAB for STEEL GTR (Measures 55-56):

0	0	0	0	0	5	5	5	2	5	2	2	2	2	2	2	2	2	2	2
0	0	0	0	0	0	0	0	0	0	0	0	0	0	0	0	0	0	0	0
0	0	0	0	0	0	0	0	0	0	0	0	0	0	0	0	0	0	0	0
0	0	0	0	0	0	0	0	0	0	0	0	0	0	0	0	0	0	0	0
0	0	0	0	0	0	0	0	0	0	0	0	0	0	0	0	0	0	0	0
0	0	0	0	0	0	0	0	0	0	0	0	0	0	0	0	0	0	0	0
0	0	0	0	0	0	0	0	0	0	0	0	0	0	0	0	0	0	0	0
0	0	0	0	0	0	0	0	0	0	0	0	0	0	0	0	0	0	0	0
0	0	0	0	0	0	0	0	0	0	0	0	0	0	0	0	0	0	0	0
0	0	0	0	0	0	0	0	0	0	0	0	0	0	0	0	0	0	0	0

57

DRUMS

STEEL GTR

STEEL GTR

FRETLESS

MELODY

E.PIANO 1

SYNVOX

TAB for STEEL GTR (Measures 57-58):

0	0	4	4	0	2	2	2	2	5	5	2	2	2	2	2	2
0	0	0	0	0	0	0	0	2	0	0	0	0	0	0	0	0
7	0	7	0	0	0	2	2	2	0	0	2	2	2	2	2	0
0	0	0	0	0	0	2	2	2	2	2	0	7	3	3	3	3
0	0	0	0	0	0	2	2	2	2	2	0	10	3	3	3	3
.	.	.	.	?	?	?	?	?	?	?	?	?	?	?	?	?



59

DRUMS

STEEL GTR

STEEL GTR

FRETLESS

MELODY

E.PIANO 1

SYNVOX

TAB for STEEL GTR (Measures 59-60):

0	0	0	5	5	5	2	2	2	2	2	2	2	2	2	2	2
0	0	0	7	4	4	0	0	0	0	0	0	0	0	0	0	0
7	0	0	4	4	0	0	0	0	0	0	0	0	0	0	0	0
0	0	0	5	0	0	0	0	0	0	0	0	0	0	0	0	0
0	0	0	2	2	2	2	2	2	2	2	2	2	2	2	2	2
.	.	.	2	5	5	5	5	2	2	2	2	2	2	2	2	2





65

DRUMS

STEEL GTR

STEEL GTR

T	2	4	2	2	4	2	6	6	2	2	2	2	0	2
A	4	4	4	0	6	6	6	6	1	2	1	2	2	2
B	2	2	2	0	4	4	4	4	2	2	2	2	0	0

FRETLESS

MELODY

E.PIANO 1

SYNVOX



67

DRUMS

STEEL GTR

STEEL GTR

T	1	10	2	2	2	2	2	2	2	2	2	2	2	3
A	2	9	2	2	2	2	2	2	2	2	2	2	0	4
B	4	4	8	0	2	2	2	2	1	1	1	1	0	2
B	2	4	2	2	0	2	2	2	2	2	2	2	10	0
B	2	4	2	2	0	2	2	2	2	2	2	2	2	0

FRETLESS

MELODY

E.PIANO 1

SYNVOX

DRUMS

STEEL GTR

STEEL GTR

T	10	4	4	2	2	2
A	6	9	6	2	2	2
B	9	8	4	2	2	2
	2	2	9	2	2	2
	3			2	2	2

FRETLESS

MELODY

DRUMS

Mr Big - To Be With You

♩ = 83,000183

2

8

14

19

25

29

31

33

35

37

V.S.

DRUMS

39

41

43

45

47

49

52

54

56

58

DRUMS

60

Musical notation for a drum set at measure 60. The notation is on a single staff with a double bar line at the beginning. It starts with a snare drum (S) and a hi-hat (H) symbol. The first four measures show a steady eighth-note pattern on the snare and hi-hat. The last four measures show a pattern of eighth notes on the snare and hi-hat, with a cymbal (C) symbol above the notes.

62

Musical notation for a drum set at measure 62. The notation is on a single staff with a double bar line at the beginning. It starts with a snare drum (S) and a hi-hat (H) symbol. The first four measures show a steady eighth-note pattern on the snare and hi-hat. The last four measures show a pattern of eighth notes on the snare and hi-hat, with a cymbal (C) symbol above the notes.

64

Musical notation for a drum set at measure 64. The notation is on a single staff with a double bar line at the beginning. It starts with a snare drum (S) and a hi-hat (H) symbol. The first four measures show a steady eighth-note pattern on the snare and hi-hat. The last four measures show a pattern of eighth notes on the snare and hi-hat, with a cymbal (C) symbol above the notes.

66

Musical notation for a drum set at measure 66. The notation is on a single staff with a double bar line at the beginning. It starts with a snare drum (S) and a hi-hat (H) symbol. The first four measures show a steady eighth-note pattern on the snare and hi-hat. The last four measures show a pattern of eighth notes on the snare and hi-hat, with a cymbal (C) symbol above the notes.

68

Musical notation for a drum set at measure 68. The notation is on a single staff with a double bar line at the beginning. It starts with a snare drum (S) and a hi-hat (H) symbol. The first four measures show a steady eighth-note pattern on the snare and hi-hat. The last four measures show a pattern of eighth notes on the snare and hi-hat, with a cymbal (C) symbol above the notes. The final measure of the system is a whole note rest, with a large number '2' above it, indicating a two-measure rest.

# Mr Big - To Be With You

STEEL GTR

$\text{♩} = 83,000183$

2

6

9

11

13

15

17

19

22

25

Detailed description: This is a guitar score for the song 'To Be With You' by Mr. Big. It is written for steel guitar in 4/4 time. The tempo is marked as quarter note = 83,000183. The score consists of ten staves of music, each starting with a measure number (2, 6, 9, 11, 13, 15, 17, 19, 22, 25). The music is characterized by a complex, syncopated rhythmic pattern, primarily using sixteenth and thirty-second notes. The key signature has two sharps (F# and C#). The notation includes various guitar-specific techniques such as slurs, ties, and rests.

V.S.

27

29

31

33

35

37

39

41

43

45

STEEL GTR

47

49

52

54

57

60

63

65

67

69

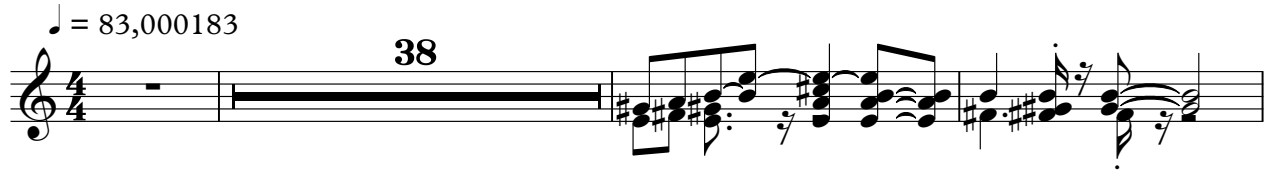


STEEL GTR

Mr Big - To Be With You

♩ = 83,000183

38



42

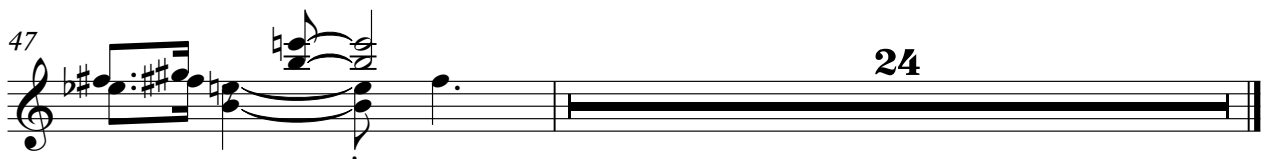


45



47

24





STEEL GTR

33

T	4	4	2	2	2	2	2	2	2	2	2	2	2	2	1	4	2	2
A	9	6	2	2	2	2	2	2	2	2	2	2	2	2	2	6	2	2
B	4	8	4	1	1	1	1	1	1	1	1	1	1	1	4	4	1	1
	4	9	4	2	2	2	2	2	2	2	2	2	2	2	4	4	2	2
	2	2	9	2	2	2	2	2	2	2	2	2	2	2	2	2	2	2
		9		2	2	2	2	2	2	2	2	2	2	2	2	2	2	2

36

T	2	2	2	2	2	2	0	6	6	6	5	5	5	5	5	5	5	5
A	2	0	0	0	2	2	11	7	4	6	2	0	0	0	0	0	0	4
B	2	2	2	2	2	2	11	6	6	6	0	0	0	0	0	0	0	0
	0	0	0	0	0	0	4	6	6	6	9	2	2	2	2	2	2	2
		2	2	3			6	4	6	5	9	5	5	5	5	5	5	5
			?					?	?	?					?			

40

T	2	2	2	2	2	2	2	4	4	4	2	2	2	2	2	2	2	2
A	2	1	1	0	2	2	2	6	6	6	2	2	2	2	2	2	2	4
B	2	2	2	0	2	2	2	4	4	4	0	1	1	1	1	1	1	2
	2	2	2	2	2	2	2	2	2	2	2	2	2	2	2	2	2	2
	2	2	2	2	2	2	2	2	2	2	2	2	2	2	2	2	2	2
								2	2	2	9	1	2	2	2	2	2	2
											?							

43

T	2	4	4	9	2	2	2	2	2	2	2	2	2	2	4	2	4	2
A	2	6	8	2	2	2	2	1	1	1	1	0	0	4	2	0	6	4
B	4	4	4	2	2	2	2	2	2	2	2	2	2	2	4	4	6	6
	2	2	2	2	2	2	2	2	2	2	2	2	2	2	2	2	2	2
	2	2	2	2	2	2	2	2	2	2	2	2	2	2	2	2	2	2
								2	2	2	2	2	2	2	2	3	0	4
								2	2	2	2	2	2	2	2	5	6	6

46

T	2	2	2	2	2	2	1	10	2	2	2	2	2	2	2	2	2	2
A	1	1	1	0	2	2	4	9	2	2	2	2	2	2	2	2	2	2
B	2	2	2	2	2	2	4	4	0	2	2	2	2	2	2	2	2	2
	2	2	2	2	2	2	2	4	2	2	2	2	2	2	2	2	2	2
							2	4	2	2	2	2	2	2	2	2	2	2

49

T	0	2	2	2	2	2	4	4	0	4	4	4	4	4	4	4	4	4
A	0	2	2	2	2	2	0	5	0	5	0	0	5	5	2	2	1	4
B	7	2	2	2	2	2	0	0	0	0	0	0	0	0	4	4	4	4
	7	0	0	0	2	2	0	0	0	0	0	0	0	0	2	2	2	2
	7														8			
															?			

52

T	0	0	0	0	2	3	3	3	3	2	4	0	4	5	5	5	5	5
A	0	0	0	0	2	2	2	2	2	2	5	0	5	0	0	0	0	0
B	2	2	2	2	3	3	3	3	3	3	0	0	2	0	0	2	2	2
	5	5	5	5	4	4	4	4	4	4	2	3	3	3	3	5	5	5

54

T	5	5	5	2	2	0	0	0	0	0	5	5	5	5	2	2	2	2
A	4	0	0	0	0	0	0	0	0	0	4	4	0	0	0	0	0	0
B	0	0	0	2	2	2	2	2	2	2	0	0	0	0	2	2	2	2
	2	2	2	0	3	3	3	3	3	3	2	2	2	2	2	2	2	2
											5	5	5	5	5	5	5	5

57

T	0	0	4	4	0	2	2	2	2	5	5	2	2	2	0	0	0	5
A	0	0	0	0	0	0	0	0	0	0	0	0	0	0	0	0	0	7
B	0	0	0	0	0	2	2	2	2	0	0	0	0	0	0	0	0	4
	0	0	0	0	0	2	2	2	2	2	2	2	2	2	2	2	2	5
						3	3	3	3	5	5	10	3	3	3	3	3	5
						?	?	?	?									5
																		5
																		5

60

T	2	2	2	2	2	2	2	4	4	4	2	2	2	2	2	2	2	2
A	2	1	1	0	2	2	2	6	6	6	2	2	2	2	2	2	2	4
B	2	2	2	0	2	2	2	4	4	4	0	1	1	1	1	1	1	2
	2	2	2	2	2	2	2	2	2	2	2	2	2	2	2	2	2	2
	2	2	2	2	2	2	2	2	2	2	2	2	2	2	2	2	2	2
								2	2	2	0	9	1	2	2	2	2	2
											?							

STEEL GTR

63

		4	4	9	2	2	2	2	2	2	2	2	2	2	4	2	4	2	6	6
T	2	6	8	2	2	2	2	2	2	2	0	0	4	2	2	2	2	4	7	7
A	4	4	4	2	2	1	1	1	1	1	0	2	2	0	4	4	0	6	6	6
B	2	2		2	2	2	2	2	2	2	0	0	0	2	2	2	0	4	4	4
				2	2	2	2	2	2	2	2	2	2	2	2	2	2	3	5	6

66

			2	2	2	2	2	2	2	1	10	2	2	2	2	2	2	2	2	2
T			2	2	2	2	2	2	2	2	9	2	2	2	2	2	2	2	2	2
A	1	1	2	2	2	2	2	2	2	4	4	0	2	2	2	2	2	2	1	1
B	2	2	2	2	2	2	2	2	2	2	4	2	0	2	2	2	2	2	2	2
	2	2	?	2	2	2	2	2	2	2	4	2	2	2	2	2	2	2	2	2

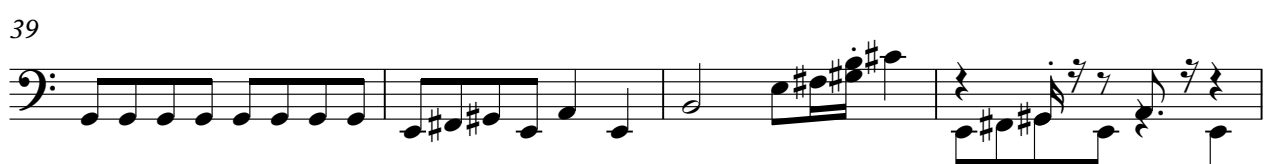
68

		2	2	2	2	2	3	10	4	4	2	2	2							
T	2	2	2	2	2	2	7	6	9	6	2	2	2							
A	1	1	0	2	2	2	2	2	8	4	2	2	2							
B	2	2	2	6	2	2	2	2	2	4	2	2	2							
	2	2	2	10	0	0	0	0	2	2	2	2	2							
	2	2	2	2	2	2	2	2	3	2	2	2	2							

# Mr Big - To Be With You

FRETLESS

♩ = 83,000183



V.S.

2

FRETLESS

43



48



52



57



62



67



# Mr Big - To Be With You

## MELODY

♩ = 83,000183

2

6

9

12

16

20

23

26

29

V.S.

33



37



40



49



52



56



60



64



68





E.PIANO 1

Mr Big - To Be With You

♩ = 83,000183

10

10

15

20

8

32

16

52

57

62

66

4

♩ = 83,000183

13

18

30

35

55

59

63

66

4