

♩ = 90,000092

Alto Saxophone



Alto Saxophone staff with rests.

Percussion

ALLES LIE



Percussion staff with rhythmic notation.

Jazz Guitar



Jazz Guitar staff with chordal notation.

Fretless Electric Bass



Fretless Electric Bass staff with melodic notation.

Alto



Alto staff with melodic notation.

Bandoneon



Bandoneon staff with melodic notation.

Tape Sampler Keyboard [Brass]



Tape Sampler Keyboard [Brass] staff with chordal notation.

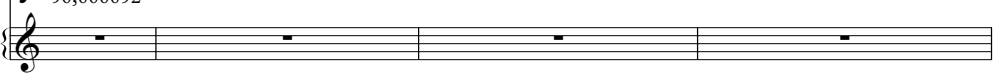
Tape Sampler Keyboard [Strings]



Tape Sampler Keyboard [Strings] staff with melodic notation.


♩ = 90,000092

Pad 5 (Bowed)




Pad 5 (Bowed) staff with rests.

5


Alto Sax. 

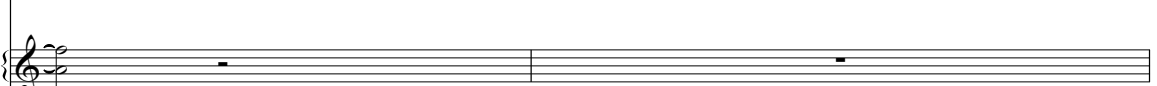
Perc. 

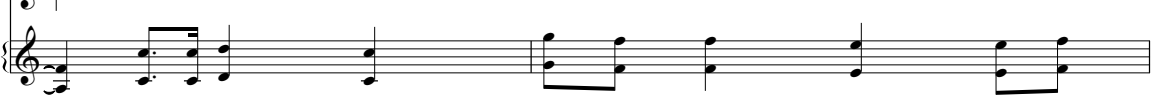
J. Gtr. 

E. Bass 

A. 

Band. 

Tape Smp. Brs 

Tape Smp. Str 



7

Alto Sax. 

Perc. 

J. Gtr. 


E. Bass 


Band. 

Tape Smp. Str 



9

Alto Sax. 

Perc. 

J. Gtr. 

E. Bass 

Band. 

Tape Smp. Str 

11

Alto Sax. Perc. J. Gtr. E. Bass A. Band. Tape Smp. Str.

This musical system covers measures 11 and 12. The Alto Saxophone part features a melodic line with eighth notes and sixteenth notes, including a triplet in measure 11. The Percussion part has a consistent rhythmic pattern of eighth notes. The J. Gtr. part plays a complex, fast-moving chordal accompaniment with sixteenth notes and triplets. The E. Bass part provides a steady bass line with quarter notes. The A. part has a simple melodic line. The Band part features a sustained chordal texture with a long note in measure 12. The Tape Smp. Str. part has a rhythmic accompaniment of eighth notes.



13

Alto Sax. Perc. J. Gtr. E. Bass A. Band. Tape Smp. Str.

This musical system covers measures 13 and 14. The Alto Saxophone part continues its melodic line with eighth notes and a triplet in measure 13. The Percussion part maintains its eighth-note pattern. The J. Gtr. part continues with its intricate chordal accompaniment. The E. Bass part has a steady bass line. The A. part has a simple melodic line. The Band part features a sustained chordal texture with a long note in measure 14. The Tape Smp. Str. part has a rhythmic accompaniment of eighth notes.

15

Alto Sax.
Perc.
J. Gtr.
E. Bass
A.
Band.
Tape Smp. Str

This musical score block covers measures 15 and 16. It features seven staves: Alto Saxophone, Percussion, Jazz Guitar, Electric Bass, Alto, Band, and Tape Sampled Strings. The Alto Saxophone part has a melodic line with slurs and accents. The Percussion part consists of a steady eighth-note pattern. The Jazz Guitar part features a complex sixteenth-note rhythm with a '6' marking. The Electric Bass part has a simple eighth-note line. The Alto part has a melodic line with slurs. The Band part has a complex rhythmic pattern with slurs. The Tape Sampled Strings part has a melodic line with slurs.



17

Alto Sax.
Perc.
J. Gtr.
E. Bass
A.
Band.
Tape Smp. Str

This musical score block covers measures 17 and 18. It features seven staves: Alto Saxophone, Percussion, Jazz Guitar, Electric Bass, Alto, Band, and Tape Sampled Strings. The Alto Saxophone part has a melodic line with slurs and accents. The Percussion part consists of a steady eighth-note pattern. The Jazz Guitar part features a complex sixteenth-note rhythm with a '6' marking. The Electric Bass part has a simple eighth-note line. The Alto part has a melodic line with slurs. The Band part has a complex rhythmic pattern with slurs. The Tape Sampled Strings part has a melodic line with slurs.

19

Alto Sax.

Perc.

J. Gtr.

E. Bass

A.

Band.

Tape Smp. Str

Pad 5



21

Alto Sax.

Perc.

J. Gtr.

E. Bass

Band.

Tape Smp. Str

Pad 5

23

Alto Sax.

Perc.

J. Gtr.

E. Bass

Band.

Tape Smp. Str



25

Alto Sax.

Perc.

J. Gtr.

E. Bass

Band.

Tape Smp. Str



27

Alto Sax.

Perc.

J. Gtr.

E. Bass

A.

Band.

Tape Smp. Brs

Tape Smp. Str

29

Alto Sax. 

Perc. 

J. Gtr. 

E. Bass 

A. 

Band. 

Tape Smp. Brs 

Tape Smp. Str 



31

Alto Sax. 

Perc. 

J. Gtr. 

E. Bass 

A. 

Band. 

Tape Smp. Brs 

Tape Smp. Str 

33

Alto Sax.
Perc.
J. Gtr.
E. Bass
A.
Band.
Tape Smp. Brs
Tape Smp. Str

Detailed description: This block contains the musical notation for measures 33 and 34. The score is arranged in a grand staff format with eight staves. The top staff is for Alto Saxophone, followed by Percussion, Jazz Guitar, Electric Bass, Trumpet (A), Band (piano), and two staves for Tape Samples (Bridges and Strings). Measure 33 features a melodic line in the Alto Sax and a complex rhythmic pattern in the Percussion and Jazz Guitar. Measure 34 continues the melodic development in the Alto Sax and features a prominent sixteenth-note pattern in the Percussion and Jazz Guitar. The Electric Bass and Band parts provide harmonic support throughout.



35

Alto Sax.
Perc.
J. Gtr.
E. Bass
A.
Band.
Tape Smp. Brs
Tape Smp. Str

Detailed description: This block contains the musical notation for measures 35 and 36. The score continues with the same eight-staff arrangement. Measure 35 shows a continuation of the melodic and rhythmic themes from the previous measures. Measure 36 introduces a triplet in the Trumpet (A) part and features a more active rhythmic pattern in the Percussion and Jazz Guitar. The overall texture remains dense with multiple layers of sound.

37

Alto Sax.

Perc.

J. Gtr.

E. Bass

A.

Band.

Tape Smp. Brs

Tape Smp. Str

Pad 5



40

Alto Sax.

Perc.

J. Gtr.

E. Bass

A.

Band.

Tape Smp. Str

42

Alto Sax.
Perc.
J. Gtr.
E. Bass
A.
Band.
Tape Smp. Str

Detailed description: This musical system covers measures 42 and 43. The Alto Saxophone part features a melodic line with eighth-note patterns and slurs. The Percussion part has a consistent rhythmic pattern of eighth notes. The J. Gtr. part consists of a dense, rhythmic chordal texture with sixteenth-note runs. The E. Bass part provides a steady bass line with quarter notes. The A. part has a simple melodic line. The Band part is mostly silent, with a single note in measure 43. The Tape Smp. Str part has a sparse, rhythmic accompaniment.



44

Alto Sax.
Perc.
J. Gtr.
E. Bass
A.
Band.
Tape Smp. Brs
Tape Smp. Str

Detailed description: This musical system covers measures 44 and 45. The Alto Saxophone part continues with its melodic line. The Percussion part has a similar rhythmic pattern. The J. Gtr. part maintains its complex chordal texture. The E. Bass part has a steady bass line. The A. part has a simple melodic line. The Band part has a long, sustained note in measure 44. The Tape Smp. Brs part is mostly silent, with a few notes in measure 45. The Tape Smp. Str part has a sparse, rhythmic accompaniment.

46

Alto Sax.

Perc.

J. Gtr.

E. Bass

A.

Band.

Tape Smp. Brs

Tape Smp. Str



48

Alto Sax.

Perc.

J. Gtr.

E. Bass

A.

Band.

Tape Smp. Brs

Tape Smp. Str

50

Alto Sax.
Perc.
J. Gtr.
E. Bass
A.
Band.
Tape Smp. Brs
Tape Smp. Str

Detailed description: This musical score block covers measures 50 and 51. It features eight staves: Alto Saxophone, Percussion, Jazz Guitar, Electric Bass, Trumpet, Band (piano), Tape Samples Brass, and Tape Samples Strings. The Alto Saxophone part has a melodic line with slurs and accents. The Percussion part consists of a steady eighth-note pattern. The Jazz Guitar part features a complex chordal texture with sixteenth-note runs and sixteenth-note chords. The Electric Bass part provides a simple harmonic accompaniment. The Trumpet part has a melodic line with slurs. The Band part is a piano accompaniment with chords and some melodic fragments. The Tape Samples Brass and Strings parts provide additional texture and support.



52

Alto Sax.
Perc.
J. Gtr.
E. Bass
A.
Band.
Tape Smp. Brs
Tape Smp. Str

Detailed description: This musical score block covers measures 52 and 53. It features the same eight staves as the previous block. The Alto Saxophone part continues its melodic line. The Percussion part maintains its eighth-note pattern. The Jazz Guitar part continues with its complex chordal texture. The Electric Bass part continues with its simple harmonic accompaniment. The Trumpet part continues its melodic line. The Band part continues with its piano accompaniment. The Tape Samples Brass and Strings parts continue to provide texture and support.

54

♩ = 81,000084 ♩ = 76,000069 ♩ = 64,000000 ♩ = 57,000031

Alto Sax.

Perc.

J. Gtr.

E. Bass

A.

Band.

Tape Smp. Brs

Tape Smp. Str

Pad 5

♩ = 81,000084 ♩ = 76,000069 ♩ = 64,000000 ♩ = 57,000031



56

Alto Sax.

Perc.

J. Gtr.

E. Bass

A.

Band.

Tape Smp. Brs

Tape Smp. Str

Pad 5

Alto Saxophone

$\text{♩} = 90,000092$

4

9

14

18

23

28

33

36

The image displays a musical score for an Alto Saxophone. It consists of eight staves of music, each beginning with a measure number. The key signature is two sharps (F# and C#), and the time signature is 4/4. The tempo is indicated as quarter note = 90,000092. The music features a variety of rhythmic patterns, including eighth and sixteenth notes, often beamed together, and some measures with rests. The notation includes slurs, ties, and dynamic markings.

39



44



49



53

 $\text{♩} = 81,0008000604,0000031$ 

Percussion

♩ = 90,000092
ALLES LIE

5

7

9

11

13

15

17

19

21

V.S.

Percussion

Musical score for Percussion, measures 23-42. The score is written on a grand staff with two staves per system. The top staff contains rhythmic notation with 'x' marks indicating specific notes or rests. The bottom staff contains a melodic line with notes and rests. The score is divided into systems, with measure numbers 23, 25, 27, 29, 31, 33, 35, 37, 40, and 42 marked at the beginning of each system. The notation includes various rhythmic values, including sixteenth notes, eighth notes, and quarter notes, often grouped with brackets and a '6' above them, indicating a sixteenth-note triplet. Measure 37 features a triplet of eighth notes marked with a '3' above them. The score concludes with a double bar line at the end of measure 42.

Percussion

44

Measure 44: Percussion staff with sixteenth-note patterns. The top staff shows sixteenth notes with 'x' marks. The bottom staff shows a bass line with eighth notes and rests. Brackets labeled '6' group the sixteenth notes in pairs.

46

Measure 46: Percussion staff with sixteenth-note patterns. The top staff shows sixteenth notes with 'x' marks. The bottom staff shows a bass line with eighth notes and rests. Brackets labeled '6' group the sixteenth notes in pairs.

48

Measure 48: Percussion staff with sixteenth-note patterns. The top staff shows sixteenth notes with 'x' marks. The bottom staff shows a bass line with eighth notes and rests. Brackets labeled '6' group the sixteenth notes in pairs.

50

Measure 50: Percussion staff with sixteenth-note patterns. The top staff shows sixteenth notes with 'x' marks. The bottom staff shows a bass line with eighth notes and rests. Brackets labeled '6' group the sixteenth notes in pairs.

52

Measure 52: Percussion staff with sixteenth-note patterns. The top staff shows sixteenth notes with 'x' marks. The bottom staff shows a bass line with eighth notes and rests. Brackets labeled '6' group the sixteenth notes in pairs.

54

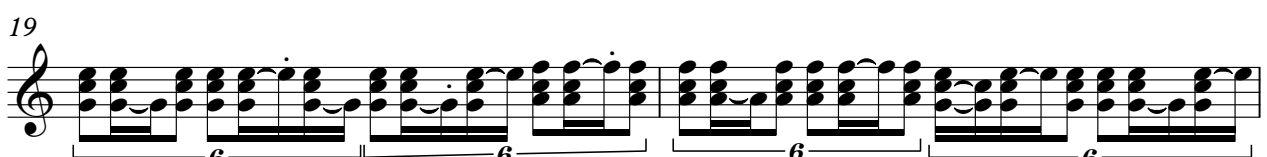
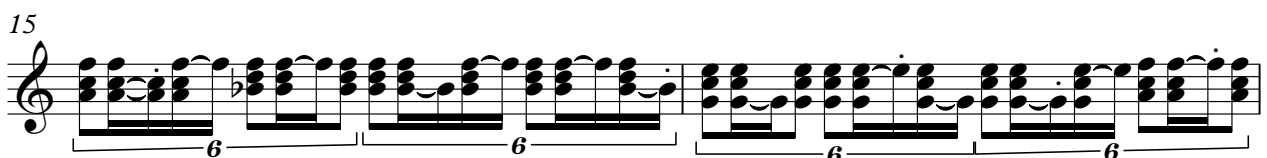
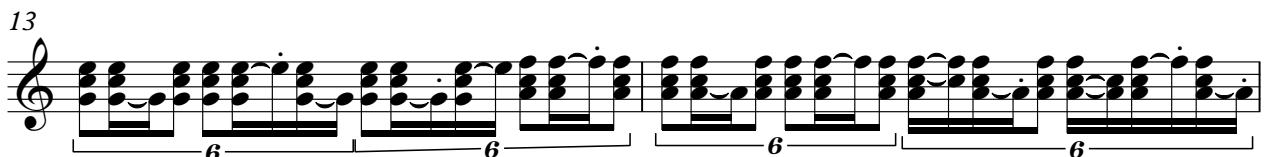
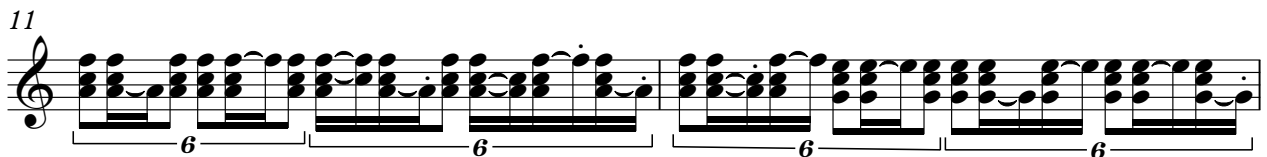
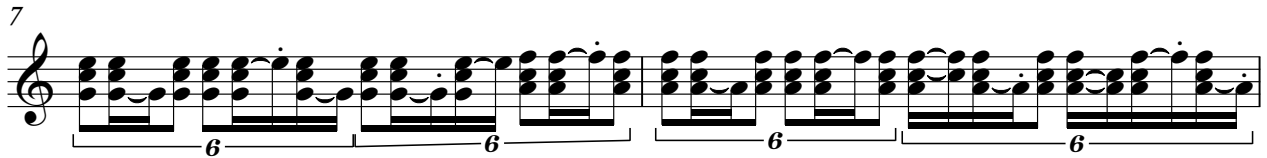
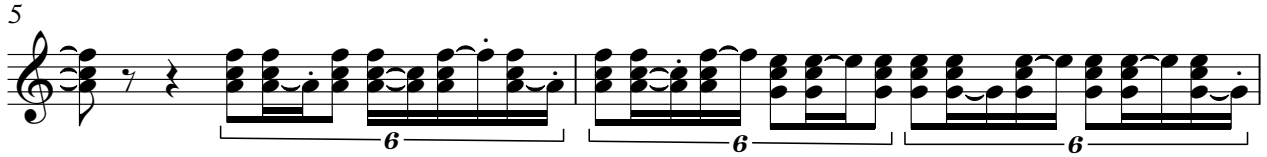
Measure 54: Percussion staff with sixteenth-note patterns. The top staff shows sixteenth notes with 'x' marks. The bottom staff shows a bass line with eighth notes and rests. Brackets labeled '6' group the sixteenth notes in pairs. Above the staff, a tempo marking is present: $\text{♩} = 81,000084 = 76,000064 = 64,000000 = 57,000031$.

56

Measure 56: Percussion staff with sixteenth-note patterns. The top staff shows sixteenth notes with 'x' marks. The bottom staff shows a bass line with eighth notes and rests. Brackets labeled '6' group the sixteenth notes in pairs.

Jazz Guitar

♩ = 90,000092



V.S.

23

25

27

29

31

33

35

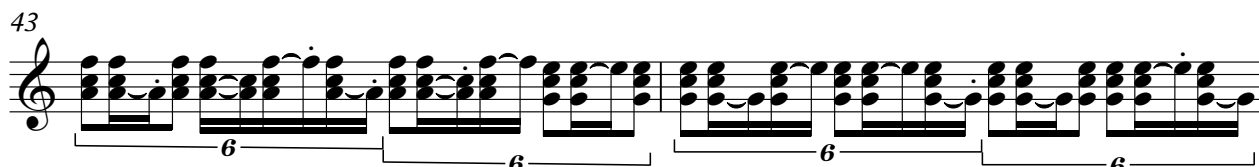
37

39

41

The image displays a page of jazz guitar sheet music, numbered 2. The title is "Jazz Guitar". The music is written in treble clef and consists of ten staves of music, numbered 23 through 41. The notation is highly complex, featuring dense sixteenth-note patterns. The bass line is primarily composed of sixteenth notes, often beamed in groups of six, with a "6" written below the staff to indicate a sixteenth-note pattern. The chords are also complex, often consisting of sixteenth-note chords. The key signature changes from one flat (B-flat) to two flats (B-flat and E-flat) at measure 33. The music is a technical exercise or a specific jazz piece, focusing on intricate rhythmic and harmonic patterns.

43



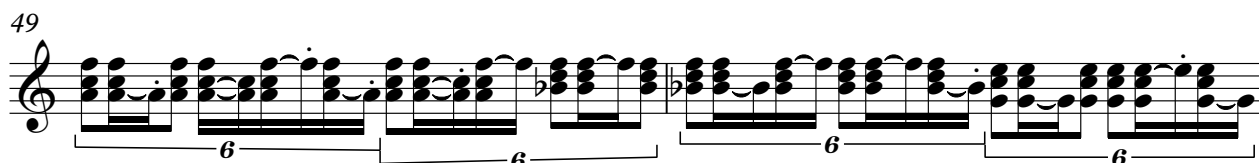
45



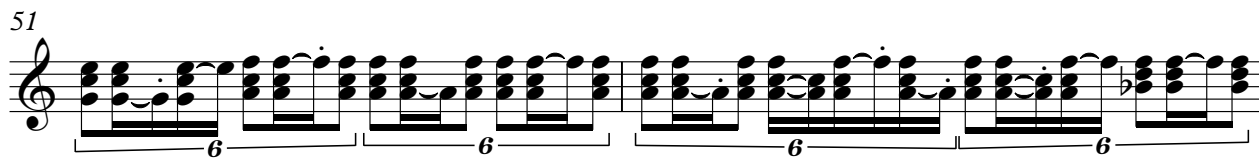
47



49



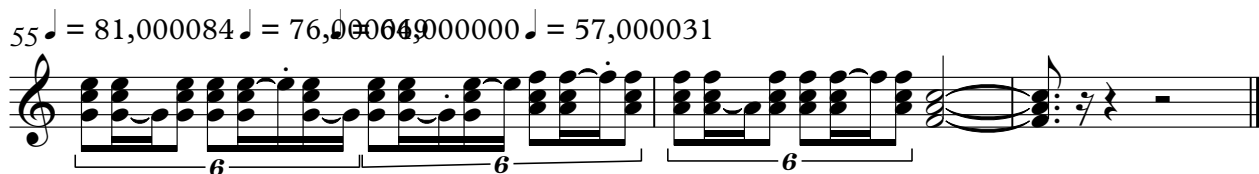
51



53



55 ♩ = 81,000084 ♪ = 76,000049 000000 ♩ = 57,000031



Fretless Electric Bass

♩ = 90,000092



V.S.

2

Fretless Electric Bass

53

♩ = 81=076,0820694,0067000031



Alto

♩ = 90,000092



40



45



49



53

♩ = 81,00078,000064,000050,000031



Bandoneon

♩ = 90,000092

Measures 1-6 of the score. The bass clef contains a melodic line starting with a quarter rest, followed by eighth and quarter notes. The treble clef is mostly empty.

Measures 7-12. Measure 7 is marked with a '7'. The bass clef features a series of chords and a melodic line. The treble clef has a melodic line starting in measure 12.

Measures 13-16. Measure 13 is marked with a '13'. The bass clef has a complex chordal accompaniment. The treble clef has a melodic line.

Measures 17-20. Measure 17 is marked with a '17'. The bass clef has a complex chordal accompaniment. The treble clef has a melodic line.

Measures 21-27. Measure 21 is marked with a '21'. The bass clef has a complex chordal accompaniment. The treble clef has a melodic line.

Measures 28-31. Measure 28 is marked with a '28'. The bass clef has a complex chordal accompaniment. The treble clef has a melodic line.

V.S.

33

36

40

47

51

54

♩ = 81, 007680000694, 0057, 000031

Tape Sampler Keyboard [Brass]

♩ = 90,000092

6 **22**

32

36 **7**

47

52

55 ♩ = 81,000084 ♩ = 76,000080 ♩ = 57,000031

Tape Sampler Keyboard [Strings]

♩ = 90,000092

Musical notation for the first system, featuring a grand staff with treble and bass clefs. The music begins with a whole rest in the treble clef and a whole note chord in the bass clef. The treble clef then plays a series of chords and eighth notes, while the bass clef provides a simple accompaniment with a flat sign (b) below the staff.

Musical notation for the second system, starting at measure 6. It features a treble clef with a series of eighth notes and chords, including a slur over a group of notes.

Musical notation for the third system, starting at measure 11. It features a treble clef with a series of eighth notes and chords, including a flat sign (b) below the staff.


Musical notation for the fourth system, starting at measure 16. It features a treble clef with a series of eighth notes and chords, including a flat sign (b) below the staff.

Musical notation for the fifth system, starting at measure 19. It features a treble clef with a series of eighth notes and chords, including a flat sign (b) below the staff, and ends with a whole rest.


22



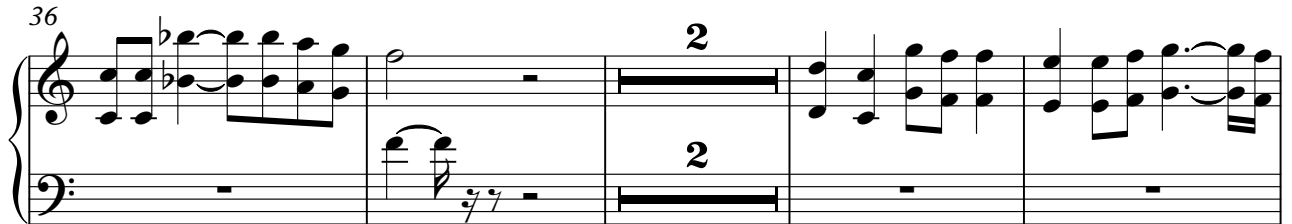
27



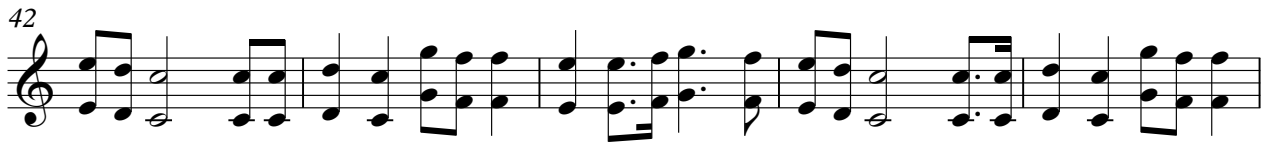
32



36



42



47



52



55

$\text{♩} = 81,000084 = \text{♩} = 76,000000 = 57,000031$



Pad 5 (Bowed)

♩ = 90,000092

19

14

37

40

15

♩ = 81,000078,000069,000050,000031