

Nederlandse Kinderliedjes - In Een Groen Groen Knc

♩ = 120,000000

Chords

Snare Dru

Bass Drum

Melody

♩ = 120,000000

Bass

2

Chords

Snare Dru

Bass Drum

Melody

Bass

4

Chords

Snare Dru

Bass Drum

Melody

Bass



6

Chords

Snare Dru

Bass Drum

Melody

Bass

8

Chords

Snare Dru

Bass Drum

Melody

Bass



10

Chords

Snare Dru

Bass Drum

Melody

Bass

12

Chords

Snare Dru

Bass Drum

Melody

Bass



14

Chords

Snare Dru

Bass Drum

Melody

Bass

16

Chords

Snare Dru

Bass Drum

Melody

Bass



18

Chords

Snare Dru

Snare Dru

Bass Drum

Melody

Bass

19

Track 7

Chords

Snare Dru

Snare Dru

Bass Drum

Melody

Bass

The image shows a musical score for six tracks. Track 7 and Melody are in treble clef, while Chords and Bass are in bass clef. The Snare Dru and Bass Drum tracks use a drum clef. Measure 19 is indicated at the top. Track 7 and Melody have a rest followed by a quarter note, an eighth note, and a quarter note. Chords has a rest followed by a quarter rest, a quarter rest, and a quarter note with a chord. Snare Dru has a rest followed by a quarter note, an eighth note, and a quarter note. Snare Dru has a rest followed by a quarter note, an eighth note, and a quarter note, followed by four triplets of eighth notes. Bass Drum has a rest followed by a quarter note, an eighth note, and a quarter note. Melody has a rest followed by a quarter note, an eighth note, and a quarter note. Bass has a rest followed by a quarter rest and a quarter note.

20

Track 7

Chords

Snare Dru

Bass Drum

Melody

Bass

22

Track 7

Chords

Snare Dru

Bass Drum

Melody

Bass

23

Track 7

Chords

Snare Dru

Bass Drum

Melody

Bass



25

Track 7

Chords

Snare Dru

Bass Drum

Melody

Bass

27

Track 7

Chords

Snare Dru

Bass Drum

Melody

Bass

28

Track 7

Chords

Snare Dru

Bass Drum

Melody

Bass

30

Track 7

Chords

Snare Dru

Bass Drum

Melody

Bass



32

Track 7

Chords

Snare Dru

Bass Drum

Melody

Bass

34

Track 7

Chords

Snare Dru

Bass Drum

Melody

Bass

This musical score page, numbered 11, begins at measure 34. It features six staves: Track 7 (treble clef), Chords (bass clef), Snare Drum (percussion clef), Bass Drum (percussion clef), Melody (treble clef), and Bass (bass clef). The Track 7 and Melody staves contain a melodic line of eighth notes with slurs. The Chords staff shows a sequence of chords, including triads and dyads. The Snare Drum and Bass Drum staves provide a rhythmic accompaniment with eighth-note patterns. The Bass staff features a bass line with eighth notes and slurs.

Nederlandse Kinderliedjes - In Een Groen Groen Knoller

Track 7

♩ = 120,000000

18



Musical notation for measure 18, starting with a whole rest. The key signature is one sharp (F#) and the time signature is 4/4. The notation shows a whole rest followed by a series of eighth notes.

21



Musical notation for measure 21, featuring eighth notes and a triplet.

24



Musical notation for measure 24, including a triplet of eighth notes.

28



Musical notation for measure 28, featuring eighth notes and a triplet.

32



Musical notation for measure 32, featuring eighth notes and a triplet.

Nederlandse Kinderliedjes - In Een Groen Groen Knoller

Chords

♩ = 120,000000

2

5

8

11

14

17

20

23

26

29

V.S.

♩ = 120,000000

6 6

3

7

10 6 6

13

17 3 3 3 3 3

19

22

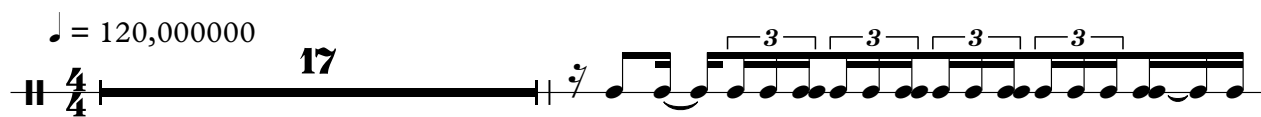
25

27 3 3 3 3

Detailed description: The image shows a musical score for a snare drum in 4/4 time. The tempo is marked as ♩ = 120,000000. The score consists of ten staves of music. The first staff begins with a 4/4 time signature and contains a series of eighth notes, with two groups of six notes marked with a '6'. The second staff starts with a measure rest (7) followed by eighth notes, with a '3' above the first measure. The third staff also starts with a measure rest (7) followed by eighth notes. The fourth staff begins with a measure rest (7), followed by eighth notes, with two groups of six notes marked with a '6'. The fifth staff starts with a measure rest (7) followed by eighth notes. The sixth staff begins with a measure rest (7), followed by eighth notes, with five groups of three notes marked with a '3'. The seventh staff starts with a measure rest (7) followed by eighth notes. The eighth staff begins with a measure rest (7) followed by eighth notes. The ninth staff starts with a measure rest (7) followed by eighth notes. The tenth staff begins with a measure rest (7), followed by eighth notes, with four groups of three notes marked with a '3'.

♩ = 120,000000

17



19



16

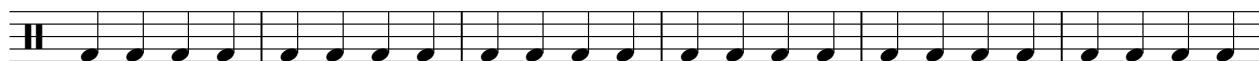
Bass Drum

Nederlandse Kinderliedjes - In Een Groen Groen Knoller

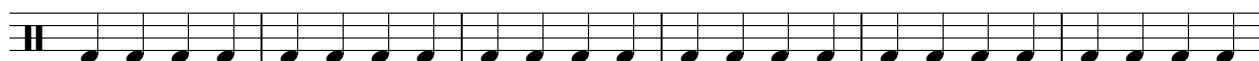
♩ = 120,000000



6



12



18



22



25



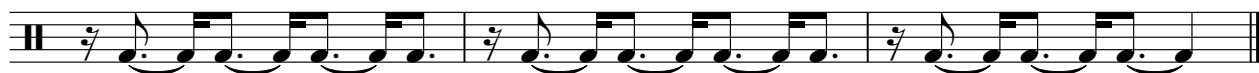
28



31



33



2

Melody

32



Nederlandse Kinderliedjes - In Een Groen Groen Knoller

Bass

♩ = 120,000000

2



8



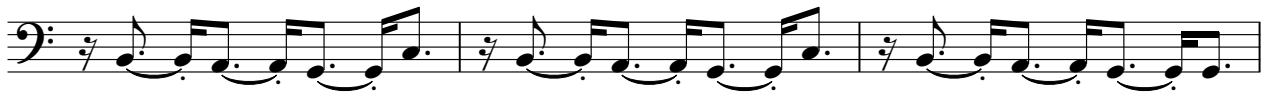
14



19



23



26



29



33

