

Neil Diamond - I Am I Said 2

♩ = 93,000038

BassDrum
ACOU GTR
PIANO(4N)



6

BassDrum
ClosedHa
ACOU GTR
BASS(1N)
VIOLIN(1)
PIANO(4N)



9

I am a said-Neil Diamond

BassDrum
ClosedHa
Cabasa(A)
ACOU GTR
BASS(1N)
VIOLIN(1)

I am a said-Neil Diamond

12

BassDrum

ClosedHa

Cabasa(A)

ACOUGTR

BASS(1N)

VIOLIN(1)



I am a said-Neil Diamond

14

BassDrum

ClosedHa

Cabasa(A)

ACOUGTR

BASS(1N)

VIOLIN(1)

16

I am a said-Neil Diamond

BassDrum

ClosedHa

Cabasa(A)

ACOU GTR

BASS(1N)

VIOLIN(1)

STRINGS

PIANO(4N)



18

I am a said-Neil Diamond

BassDrum

ClosedHa

Cabasa(A)

ACOU GTR

BASS(1N)

STRINGS

PIANO(4N)

20

I am a said-Neil Diamond

BassDrum

ClosedHa

Cabasa(A)

ACOU GTR

BASS(1N)

STRINGS

PIANO(4N)



22

I am a said-Neil Diamond

BassDrum

ClosedHa

Cabasa(A)

ACOU GTR

BASS(1N)

STRINGS

PIANO(4N)

I am a said-Neil Diamond

24

HORNS(4N)

Snare(D1)

BassDrum

ClosedHa

OpenHat(

Crash(C#

HiTom(D2

MidTom(B

Cabasa(A

ACOU GTR

BASS(1N)

STRINGS

PIANO(4N)

Detailed description: This is a multi-stem musical score for the song 'I am a said-Neil Diamond'. The score is arranged vertically with 14 staves. The top staff is the vocal line, starting at measure 24. Below it are the Horns (4N), Snare (D1), Bass Drum, Closed Hat, Open Hat, Crash (C#), Hi Tom (D2), Mid Tom (B), and Cabasa (A). The bottom section includes Acoustic Guitar (ACOU GTR), Bass (BASS 1N), Strings, and Piano (PIANO 4N). The Acoustic Guitar part features complex chordal textures with triplets and 7/7 rhythms. The Bass line provides a steady accompaniment. The Strings and Piano parts provide harmonic support with sustained chords and rhythmic patterns.

I am a said-Neil Diamond

HORNS(4N)

Snare(D1)

BassDrum

ClosedHa

ACOU GTR

BASS(1N)

STRINGS

PIANO(4N)



I am a said-Neil Diamond

HORNS(4N)

Snare(D1)

BassDrum

ClosedHa

Crash(C#)

LowTom(G)

MidTom(B)

ACOU GTR

BASS(1N)

STRINGS

PIANO(4N)

I am a said-Neil Diamond

35

HORNS(4N)

Snare(D1)

BassDrum

ClosedHa

ACOUGTR

BASS(1N)

VIOLIN(1)

STRINGS

PIANO(4N)



I am a said-Neil Diamond

39

BassDrum

ClosedHa

Cabasa(A)

ACOUGTR

BASS(1N)

VIOLIN(1)

PIANO(4N)

I am a said-Neil Diamond

43

BassDrum

ClosedHa

Cabasa(A)

ACOU GTR

BASS(1N)

VIOLIN(1)

STRINGS

PIANO(4N)



I am a said-Neil Diamond

46

BassDrum

ClosedHa

Cabasa(A)

ACOU GTR

BASS(1N)

STRINGS

PIANO(4N)

48
I am a said-Neil Diamond

BassDrum

ClosedHa

Cabasa(A)

ACOU GTR

BASS(1N)

STRINGS

PIANO(4N)



50
I am a said-Neil Diamond

BassDrum

ClosedHa

Cabasa(A)

ACOU GTR

BASS(1N)

STRINGS

PIANO(4N)

I am a said-Neil Diamond

52

OBOE(1N)

BassDrum

ClosedHa

Cabasa(A)

ACOU GTR

BASS(1N)

VIOLIN(1)

STRINGS

PIANO(4N)

Detailed description: This system contains measures 52 and 53. The vocal line (I am a said-Neil Diamond) has a treble clef and a key signature of one flat. The melody starts with a quarter note G4, followed by quarter notes A4, Bb4, and C5, then a quarter rest, followed by quarter notes D5, C5, Bb4, and A4. The accompaniment includes Oboe (1N) with a whole note G3, Bass Drum with a quarter note G2, Closed Ha with a quarter rest and a half note G3, Cabasa (A) with a steady eighth-note pattern, Acoustic Guitar (ACOU GTR) with a complex chordal accompaniment, Bass (1N) with a whole note G2, Violin (1) with a whole note G3, Strings with a sustained chord, and Piano (4N) with a sustained chord.



I am a said-Neil Diamond

54

OBOE(1N)

BassDrum

ClosedHa

Cabasa(A)

ACOU GTR

BASS(1N)

VIOLIN(1)

STRINGS

PIANO(4N)

Detailed description: This system contains measures 54 and 55. The vocal line (I am a said-Neil Diamond) has a treble clef and a key signature of one flat. The melody starts with a whole rest, followed by a quarter rest, then a quarter note G4, and a quarter rest. The accompaniment includes Oboe (1N) with a whole note G3, Bass Drum with a quarter note G2, Closed Ha with a quarter rest and a half note G3, Cabasa (A) with a steady eighth-note pattern, Acoustic Guitar (ACOU GTR) with a complex chordal accompaniment, Bass (1N) with a whole note G2, Violin (1) with a whole note G3, Strings with a sustained chord, and Piano (4N) with a sustained chord.

I am a said-Neil Diamond

56

OBOE(1N)

BassDrum

ClosedHa

Cabasa(A)

ACOU GTR

BASS(1N)

STRINGS

PIANO(4N)

Detailed description: This is a page of a musical score for the song 'I am a said' by Neil Diamond. The page is numbered 11 in the top right corner and 56 in the top left corner. The score is arranged in a vertical stack of staves. The top staff is the vocal line, labeled 'I am a said-Neil Diamond', with a treble clef and a key signature of one flat. The second staff is for the OBOE(1N), with a treble clef and a key signature of one flat, featuring a long note with a slur. The third staff is for the BassDrum, with a drum clef and a key signature of one flat, showing a rhythmic pattern of quarter notes. The fourth staff is for the ClosedHa, with a drum clef and a key signature of one flat, showing a pattern of quarter notes with 'x' marks. The fifth staff is for the Cabasa(A), with a drum clef and a key signature of one flat, showing a rhythmic pattern of eighth notes. The sixth staff is for the ACOU GTR, with a treble clef and a key signature of one flat, showing a complex rhythmic pattern with triplets. The seventh staff is for the BASS(1N), with a bass clef and a key signature of one flat, showing a simple bass line. The eighth staff is for the STRINGS, with a treble clef and a key signature of one flat, showing a sustained chord with a slur. The ninth staff is for the PIANO(4N), with a treble clef and a key signature of one flat, showing a sustained chord with a slur.

I am a said-Neil Diamond

58

OBOE(1N)

HORNS(4N)

Snare(D1)

BassDrum

ClosedHa

OpenHat(

Crash(C#

HiTom(D2

MidTom(B

Cabasa(A

ACOU GTR

BASS(1N)

STRINGS

PIANO(4N)

Detailed description: This is a page of a musical score for the song 'I Am a Said' by Neil Diamond. The page is numbered 12 and starts at measure 58. The score is arranged for a large ensemble. At the top, the vocal line for the Oboe (1N) is shown, with a treble clef and a key signature of one flat. Below it are the parts for the Horns (4N), Snare (D1), Bass Drum, Closed Hat, Open Hat, Crash (C#), Hi Tom (D2), Mid Tom (B), and Cabasa (A). The Cabasa part features a rhythmic pattern of eighth notes. The Acoustic Guitar (ACOU GTR) part is in the treble clef and features a complex, melodic line with many accidentals. The Bass (BASS 1N) part is in the bass clef and features a melodic line with a triplet of eighth notes. The Strings and Piano (4N) parts are at the bottom, with the strings playing sustained chords and the piano playing a rhythmic accompaniment of chords.

61

I am a said-Neil Diamond

HORNS(4N)

Snare(D1)

BassDrum

ClosedHa

ACOU GTR

BASS(1N)

STRINGS

PIANO(4N)



65

I am a said-Neil Diamond

HORNS(4N)

Snare(D1)

BassDrum

ClosedHa

Crash(C#)

LowTom(G)

MidTom(B)

ACOU GTR

BASS(1N)

STRINGS

PIANO(4N)

I am a said-Neil Diamond

69

HORNS(4N)

Snare(D1)

BassDrum

ClosedHa

ACOU GTR

BASS(1N)

STRINGS

PIANO(4N)



I am a said-Neil Diamond

73

HORNS(4N)

Snare(D1)

BassDrum

ClosedHa

Crash(C#)

LowTom(G)

MidTom(B)

ACOU GTR

BASS(1N)

STRINGS

PIANO(4N)

I am a said-Neil Diamond

HORNS(4N)

Snare(D1)

BassDrum

ClosedHa

ACOU GTR

BASS(1N)

STRINGS

PIANO(4N)



I am a said-Neil Diamond

HORNS(4N)

Snare(D1)

BassDrum

ClosedHa

Crash(C#)

LowTom(G)

MidTom(B)

ACOU GTR

BASS(1N)

STRINGS

PIANO(4N)

I am a said-Neil Diamond

85

HORNS(4N)

Snare(D1)

BassDrum

ClosedHa

ACOU GTR

BASS(1N)

VIOLIN(1)

STRINGS

PIANO(4N)



I am a said-Neil Diamond

89

♩ = 88,000023 ♩ = 82,0000300076

BassDrum

ClosedHa

ACOU GTR

BASS(1N)

VIOLIN(1)

STRINGS

♩ = 88,000023 ♩ = 82,0000300076

92 ♩ = 93,000038

BassDrum

ClosedHa

Ride(D#2)

ACOU GTR

BASS(1N)

STRINGS

♩ = 93,000038

PIANO(4N)

I am a said-Neil Diamond

Neil Diamond - I Am I Said 2

♩ = 93,000038

8



13



17



21



26



31



36



39

2



44



48



52



56



61



66



71



76



81



86



I am a said-Neil Diamond

89

♩ = 88, 89, 90, 91, 92, 93, 94, 95, 96, 97, 98, 99, 100, 101, 102, 103, 104, 105, 106, 107, 108, 109, 110, 111, 112, 113, 114, 115, 116, 117, 118, 119, 120, 121, 122, 123, 124, 125, 126, 127, 128, 129, 130, 131, 132, 133, 134, 135, 136, 137, 138

3

OBOE(1N)

Neil Diamond - I Am I Said 2

♩ = 93,000038

51

57

♩ = 88,91789000638

31 **3**

HORNS(4N)

Neil Diamond - I Am I Said 2

♩ = 93,000038

24

29

35

21

60

66

72

78

84

88

2

3

♩ = 88,000038 88,000038 88,000038

Snare(D1)

Neil Diamond - I Am I Said 2

♩ = 93,000038

23

28

34

39

20

63

69

75

81

86

♩ = 89,92760000038

2 3

BassDrum

Neil Diamond - I Am I Said 2

♩ = 93,000038

3



9



15



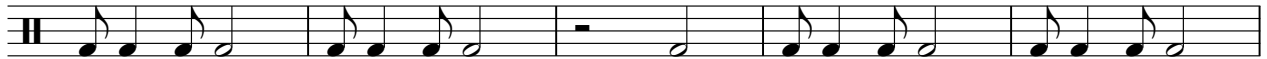
20



25



30

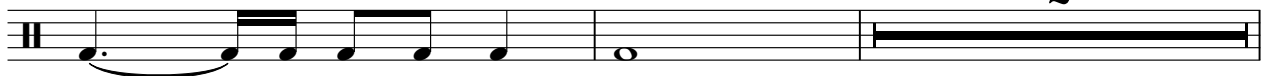


35



38

2



ClosedHa

Neil Diamond - I Am I Said 2

♩ = 93,000038

6

A guitar tab for measure 6. It starts with a double bar line and a thick black bar across the strings. The rest of the measure contains six eighth notes, each with a circled 'x' above it, indicating a muted note.

12

A guitar tab for measure 12. It contains six eighth notes, each with a circled 'x' above it, indicating a muted note.

18

A guitar tab for measure 18. It contains six eighth notes, each with a circled 'x' above it, indicating a muted note.

24

A guitar tab for measure 24. It starts with a double bar line and a circled 'x' above the first note. The rest of the measure contains six eighth notes, each with a circled 'x' above it, indicating a muted note.

28

A guitar tab for measure 28. It contains six eighth notes, each with a circled 'x' above it, indicating a muted note.

32

A guitar tab for measure 32. It starts with a double bar line and a thick black bar across the strings. The rest of the measure contains six eighth notes, each with a circled 'x' above it, indicating a muted note.

36

A guitar tab for measure 36. It contains six eighth notes, each with a circled 'x' above it, indicating a muted note. The measure ends with a double bar line and a thick black bar across the strings.

2

2

ClosedHa

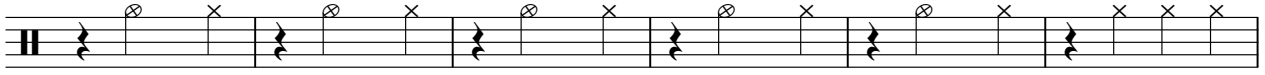
42



48



54



60



64



68



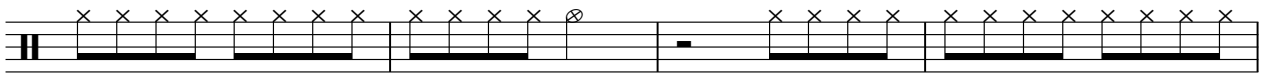
72



76



80



84



ClosedHa

88

♩ = 88, 82, 002003, 703, 000038

A guitar tablature for the piece 'ClosedHa'. The score consists of six measures. The first measure contains a series of seven 'x' marks above the staff, indicating muted notes. The second measure has a circled 'x' above the staff. The third measure has an 'x' above the staff. The fourth measure has a circled 'x' above the staff. The fifth measure has an 'x' above the staff. The sixth measure has a circled 'x' above the staff and a large number '2' above the staff, indicating a second ending. The tablature uses a standard six-line staff with various symbols: 'x' for muted notes, circled 'x' for specific notes, and a '2' for a second ending. The piece is marked with a tempo of 88 beats per minute.

OpenHat(

Neil Diamond - I Am I Said 2

♩ = 93,000038

23 34

This guitar tab shows two measures. Measure 23 consists of a single bar with a solid black line across the staff, indicating a sustained chord. Measure 34 also consists of a single bar with a solid black line across the staff, indicating a sustained chord.

59

31 3

♩ = 88,82000038

This guitar tab shows two measures. Measure 31 consists of a single bar with a solid black line across the staff, indicating a sustained chord. Measure 3 consists of a single bar with a solid black line across the staff, indicating a sustained chord.

Crash(C#

Neil Diamond - I Am I Said 2

♩ = 93,000038

24 6 27

A guitar tab for measures 24 to 27. Measure 24 has a thick black bar across the strings. Measure 25 has a treble clef and a whole note on the 6th fret. Measure 26 has a thick black bar across the strings. Measure 27 has a thick black bar across the strings.

60 6 7

A guitar tab for measures 60 to 63. Measure 60 has a treble clef and a whole note on the 6th fret. Measure 61 has a thick black bar across the strings. Measure 62 has a treble clef and a whole note on the 7th fret. Measure 63 has a treble clef and a whole note on the 7th fret.

76 6 8 3

♩ = 88,82,00,00,00 38

A guitar tab for measures 76 to 80. Measure 76 has a thick black bar across the strings. Measure 77 has a treble clef and a whole note on the 6th fret. Measure 78 has a thick black bar across the strings. Measure 79 has a treble clef and a whole note on the 8th fret. Measure 80 has a thick black bar across the strings.

LowTom(G

Neil Diamond - I Am I Said 2

♩ = 93,000038

30 34



67

6 7



81

♩ = 88,000038

9 3



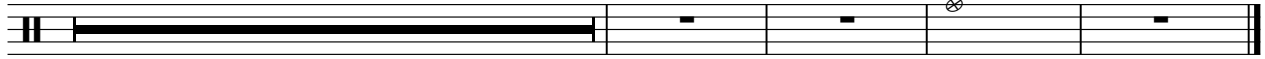
Neil Diamond - I Am I Said 2

Ride(D#2)

♩ = 93,000038

90

♩ = 88,82,000038 93,000038



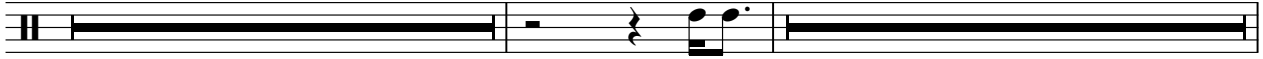
HiTom(D2)

Neil Diamond - I Am I Said 2

♩ = 93,000038

23

34

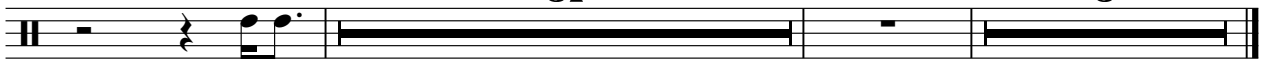


59

31

♩ = 88,82000038

3



Neil Diamond - I Am I Said 2

MidTom(B

♩ = 93,000038

23 6

32 27 6

67 6 7

81 9 3

♩ = 88,000038

Cabasa(A

Neil Diamond - I Am I Said 2

♩ = 93,000038

8

11

14

17

20

23

17

42

45

48

51

V.S.

♩ = 93,000038

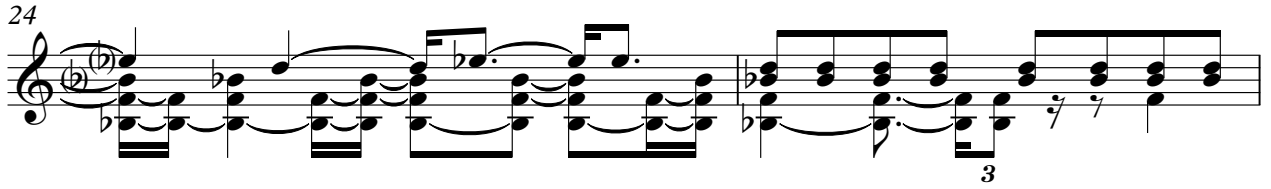
The image displays a guitar score for the song "I Am I Said 2" by Neil Diamond. The score is written in standard musical notation on a single staff, with a key signature of one flat (B-flat) and a tempo of 93,000038. The score is divided into measures, with measure numbers 2, 5, 7, 9, 11, 13, 15, 17, 19, and 20 indicated. The notation includes various rhythmic values, accidentals, and articulation marks. Specific techniques are highlighted with numbers: a '2' above the first measure, a '3' above measure 7, a '3' above measure 11, a '3' above measure 13, and two '3's above measure 17. The score concludes with a double bar line and the initials "V.S." at the bottom right.

V.S.

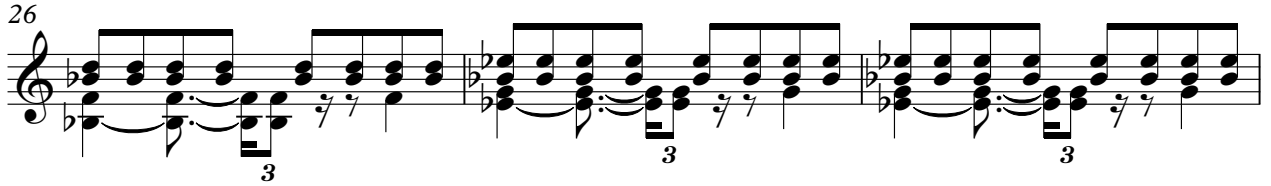
22



24



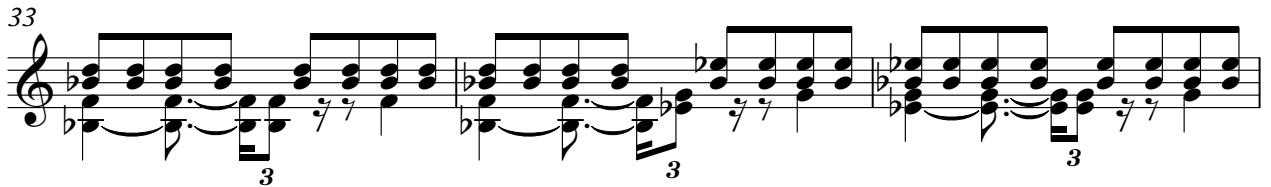
26



29



33



36



39



42



44



46



48

50

52

54

55

57

59

61

64

68

V.S.

71

3 3 3

74

3 3 3

77

3 3 3

80

3 3 3 3

84

3 3 3

87

90

$\text{♩} = 88,000023$ $\text{♩} = 82,000038$ $\text{♩} = 78,000076$

92


$\text{♩} = 93,000038$

VIOLIN(1)

Neil Diamond - I Am I Said 2

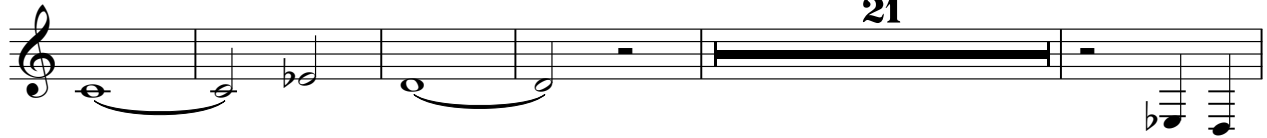
♩ = 93,000038

6



13

21



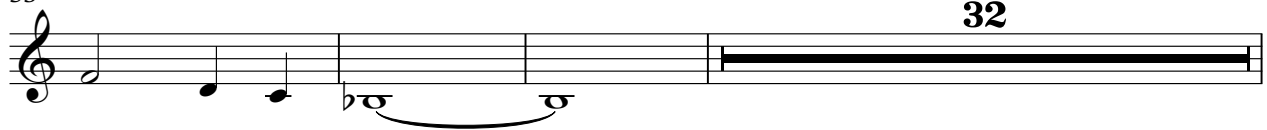
39

2 **8**



53

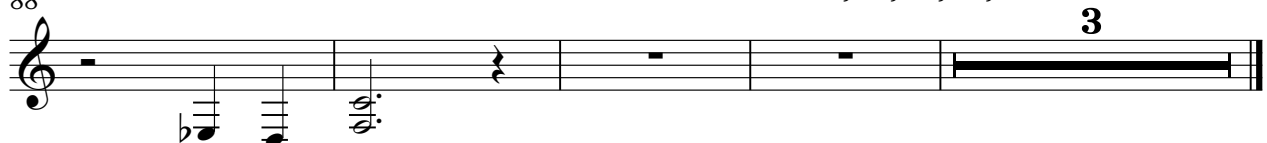
32



88

♩ = 88,000038

3



Neil Diamond - I Am I Said 2

STRINGS

$\text{♩} = 93,000038$

16

23

30

36

5

45

52

59

66

72

78

V.S.

2

84

STRINGS

88

88,00000000703,000038

PIANO(4N)

Neil Diamond - I Am I Said 2

♩ = 93,000038

2

7

9

22

27

31

35

37

3

42

46

52

60

64

68

72

76

80

84

