

Nena - Manchmal Ist Ein Tag Ein Ganzes Leben

♩ = 170,000565

MELODY

DRUMS

MUTED GTR

OVERDRIVE

FINGERDBAS

STRINGS

♩ = 170,000565

Detailed description: This system contains the first three measures of the piece. The tempo is 170,000565. The MELODY is in treble clef, 4/4 time, with notes G4, A4, B4, C5, B4, A4, G4. The DRUMS part features a snare drum on the second and fourth beats of each measure. The MUTED GTR part consists of eighth-note chords: G4-B4, A4-C5, B4-A4, G4-F4. The OVERDRIVE part has chords: G4-B4, A4-C5, B4-A4, G4-F4. The FINGERDBAS part is in bass clef, 4/4 time, with notes G2, A2, B2, C3, B2, A2, G2. The STRINGS part is in bass clef, 3/4 time, with a whole note chord G2-B2-D3 in the first measure and a whole note chord G2-B2-D3 in the second measure.



4

MELODY

DRUMS

MUTED GTR

OVERDRIVE

FINGERDBAS

STRINGS

Detailed description: This system contains measures 4 through 6. The MELODY continues with notes G4, A4, B4, C5, B4, A4, G4. The DRUMS part continues with snare drum on the second and fourth beats. The MUTED GTR part continues with eighth-note chords: G4-B4, A4-C5, B4-A4, G4-F4. The OVERDRIVE part has chords: G4-B4, A4-C5, B4-A4, G4-F4. The FINGERDBAS part continues with notes G2, A2, B2, C3, B2, A2, G2. The STRINGS part is in bass clef, 3/4 time, with a whole note chord G2-B2-D3 in the first measure and a whole note chord G2-B2-D3 in the second measure.

6

MELODY

DRUMS

MUTED GTR

OVERDRIVE

FINGERDBAS

STRINGS



8

MELODY

DRUMS

MUTED GTR

OVERDRIVE

FINGERDBAS

STRINGS

16

MELODY

DRUMS

MUTED GTR

OVERDRIVE

FINGERDBAS



18

MELODY

DRUMS

MUTED GTR

OVERDRIVE

FINGERDBAS



20

MELODY

DRUMS

MUTED GTR

FINGERDBAS

22

MELODY

DRUMS

MUTED GTR

FINGERDBAS



24

MELODY

DRUMS

MUTED GTR

OVERDRIVE

FINGERDBAS

26

MELODY

DRUMS

MUTED GTR

OVERDRIVE

FINGERDBAS

STRINGS



28

MELODY

DRUMS

MUTED GTR

OVERDRIVE

FINGERDBAS

STRINGS

30

MELODY

DRUMS

MUTED GTR

OVERDRIVE

FINGERDBAS

STRINGS

Detailed description: This system contains measures 30 and 31. The MELODY staff (treble clef) features a sequence of eighth and quarter notes, with a key signature change to one sharp (F#) at the start of measure 31. The DRUMS staff (drum clef) shows a consistent pattern of eighth notes with 'x' marks above them, indicating a specific drum sound. The MUTED GTR staff (treble clef) consists of a steady eighth-note chordal pattern. The OVERDRIVE staff (treble clef) has a slower, more melodic line with some ties. The FINGERDBAS staff (bass clef) plays a rhythmic eighth-note pattern. The STRINGS staff (bass clef) has a long, sustained note with a dynamic marking of 'p' (piano).



32

MELODY

DRUMS

MUTED GTR

OVERDRIVE

FINGERDBAS

STRINGS

Detailed description: This system contains measures 32 and 33. The MELODY staff (treble clef) is mostly empty, with a whole rest in measure 32 and a whole note in measure 33. The DRUMS staff (drum clef) continues with the eighth-note pattern. The MUTED GTR staff (treble clef) continues with the eighth-note chordal pattern. The OVERDRIVE staff (treble clef) has a melodic line with a long note in measure 32. The FINGERDBAS staff (bass clef) continues with the eighth-note pattern. The STRINGS staff (bass clef) has a long, sustained note with a dynamic marking of 'p' (piano).

34

MELODY

DRUMS

MUTED GTR

OVERDRIVE

FINGERDBAS

STRINGS



36

MELODY

DRUMS

MUTED GTR

OVERDRIVE

FINGERDBAS

STRINGS

38

MELODY

DRUMS

MUTED GTR

OVERDRIVE

FINGERDBAS

STRINGS



40

MELODY

DRUMS

MUTED GTR

OVERDRIVE

FINGERDBAS

STRINGS

42

MELODY

DRUMS

MUTED GTR

FINGERDBAS



44

MELODY

DRUMS

MUTED GTR

FINGERDBAS



46

MELODY

DRUMS

MUTED GTR

FINGERDBAS

STRINGS

48

MELODY

DRUMS

MUTED GTR

OVERDRIVE

FINGERDBAS

STRINGS



50

MELODY

DRUMS

MUTED GTR

OVERDRIVE

FINGERDBAS

52

MELODY

DRUMS

MUTED GTR

FINGERDBAS



54

MELODY

DRUMS

MUTED GTR

FINGERDBAS

STRINGS

56

MELODY

DRUMS

MUTED GTR

OVERDRIVE

FINGERDBAS

STRINGS



58

MELODY

DRUMS

OVERDRIVE

FINGERDBAS

STRINGS

60

MELODY

DRUMS

OVERDRIVE

FINGERBAS

STRINGS



62

MELODY

DRUMS

OVERDRIVE

FINGERBAS

STRINGS

64

MELODY

DRUMS

OVERDRIVE

FINGERBAS

STRINGS



66

MELODY

DRUMS

OVERDRIVE

FINGERBAS

STRINGS

68

MELODY

DRUMS

OVERDRIVE

FINGERBAS

STRINGS



70

MELODY

DRUMS

OVERDRIVE

FINGERBAS

STRINGS

72

MELODY

DRUMS

MUTED GTR

OVERDRIVE

FINGERDBAS

STRINGS



74

MELODY

DRUMS

MUTED GTR

OVERDRIVE

FINGERDBAS

STRINGS

80

MELODY

DRUMS

MUTED GTR

OVERDRIVE

FINGERDBAS

STRINGS



82

MELODY

DRUMS

MUTED GTR

OVERDRIVE

FINGERDBAS

STRINGS

84

MELODY

DRUMS

MUTED GTR

OVERDRIVE

FINGERDBAS

STRINGS



86

MELODY

DRUMS

MUTED GTR

OVERDRIVE

FINGERDBAS

STRINGS

88

MELODY

DRUMS

MUTED GTR

OVERDRIVE

FINGERDBAS

STRINGS

90

DRUMS

MUTED GTR

OVERDRIVE

FINGERDBAS

92

DRUMS

MUTED GTR

OVERDRIVE

FINGERDBAS

94

DRUMS

MUTED GTR

OVERDRIVE

FINGERDBAS



96

MELODY

DRUMS

MUTED GTR

OVERDRIVE

FINGERDBAS

98

MELODY

DRUMS

STEEL GTR

MUTED GTR

OVERDRIVE

FINGERDBAS

STRINGS



101

MELODY

DRUMS

STEEL GTR

OVERDRIVE

STRINGS

STRINGS

104

MELODY

DRUMS

STEEL GTR

OVERDRIVE

STRINGS

STRINGS



106

MELODY

DRUMS

STEEL GTR

OVERDRIVE

STRINGS

112

MELODY

DRUMS

STEEL GTR

OVERDRIVE

FINGERDBAS

STRINGS

STRINGS



115

MELODY

DRUMS

MUTED GTR

OVERDRIVE

FINGERDBAS

STRINGS

117

MELODY

DRUMS

MUTED GTR

OVERDRIVE

FINGERDBAS

STRINGS



119

MELODY

DRUMS

MUTED GTR

OVERDRIVE

FINGERDBAS

STRINGS

121

MELODY

DRUMS

MUTED GTR

OVERDRIVE

FINGERDBAS

STRINGS

Detailed description: This musical score block covers measures 121 and 122. It features six staves: MELODY (treble clef), DRUMS (drum clef), MUTED GTR (treble clef), OVERDRIVE (treble clef), FINGERDBAS (bass clef), and STRINGS (bass clef). The MELODY staff shows a whole note chord in measure 121 and a whole rest in measure 122. The DRUMS staff has a consistent rhythmic pattern of eighth notes with 'x' marks above them. The MUTED GTR staff consists of a continuous eighth-note chordal pattern. The OVERDRIVE staff has a few notes in measure 122. The FINGERDBAS staff has a rhythmic eighth-note pattern. The STRINGS staff shows a long note in measure 121 and a whole rest in measure 122.



123

MELODY

DRUMS

MUTED GTR

OVERDRIVE

FINGERDBAS

STRINGS

Detailed description: This musical score block covers measures 123 and 124. It features six staves: MELODY (treble clef), DRUMS (drum clef), MUTED GTR (treble clef), OVERDRIVE (treble clef), FINGERDBAS (bass clef), and STRINGS (bass clef). The MELODY staff has a melodic line with eighth and quarter notes. The DRUMS staff continues the rhythmic pattern. The MUTED GTR staff continues the eighth-note chordal pattern. The OVERDRIVE staff has a few notes in measure 124. The FINGERDBAS staff has a rhythmic eighth-note pattern. The STRINGS staff shows a long note in measure 123 and a whole rest in measure 124.

125

MELODY

DRUMS

MUTED GTR

OVERDRIVE

FINGERDBAS

STRINGS



127

MELODY

DRUMS

MUTED GTR

OVERDRIVE

FINGERDBAS

STRINGS

129

MELODY

DRUMS

MUTED GTR

OVERDRIVE

FINGERDBAS

STRINGS



131

MELODY

DRUMS

MUTED GTR

OVERDRIVE

FINGERDBAS

STRINGS

133

MELODY

DRUMS

MUTED GTR

OVERDRIVE

FINGERDBAS

STRINGS



135

MELODY

DRUMS

MUTED GTR

OVERDRIVE

FINGERDBAS

STRINGS

137

MELODY
DRUMS
MUTED GTR
OVERDRIVE
FINGERDBAS
STRINGS

Detailed description: This musical score block covers measures 137 and 138. The MELODY staff (treble clef) shows a whole rest in measure 137 and a whole note in measure 138. The DRUMS staff (percussion clef) features a consistent rhythmic pattern of eighth notes with 'x' marks above them. The MUTED GTR staff (treble clef) consists of a continuous eighth-note chordal pattern. The OVERDRIVE staff (treble clef) has a sparse melodic line with some accidentals. The FINGERDBAS staff (bass clef) plays a steady eighth-note bass line. The STRINGS staff (bass clef) has a long, sustained note in measure 137 and a short melodic phrase in measure 138.



139

MELODY
DRUMS
MUTED GTR
OVERDRIVE
FINGERDBAS
STRINGS

Detailed description: This musical score block covers measures 139 and 140. The MELODY staff (treble clef) has a melodic line with eighth and quarter notes. The DRUMS staff (percussion clef) continues the eighth-note pattern. The MUTED GTR staff (treble clef) maintains the eighth-note chordal texture. The OVERDRIVE staff (treble clef) features a melodic line with some rests. The FINGERDBAS staff (bass clef) plays a steady eighth-note bass line. The STRINGS staff (bass clef) has a long, sustained note in measure 139 and a short melodic phrase in measure 140.

141

MELODY

DRUMS

MUTED GTR

OVERDRIVE

FINGERDBAS

STRINGS



143

MELODY

DRUMS

MUTED GTR

OVERDRIVE

FINGERDBAS

STRINGS

145

MELODY

DRUMS

MUTED GTR

OVERDRIVE

FINGERDBAS

STRINGS



147

MELODY

DRUMS

STEEL GTR

MUTED GTR

OVERDRIVE

FINGERDBAS

STRINGS

STRINGS

Nena - Manchmal Ist Ein Tag Ein Ganzes Leben

MELODY

♩ = 170,000565

6

11

16

21

26

31

37

43

46

50



55



61



67



72



78



84



97



102



108



Nena - Manchmal Ist Ein Tag Ein Ganzes Leben

DRUMS

♩ = 170,000565

5

9

13

17

21

25

29

33

37

V.S.

DRUMS

41

Musical notation for drum set, measures 41-44. The top staff shows a snare drum pattern with eighth notes and a triplet of eighth notes. The bottom staff shows a bass drum pattern with quarter notes.

45

Musical notation for drum set, measures 45-48. The top staff shows a snare drum pattern with eighth notes. The bottom staff shows a bass drum pattern with quarter notes.

49

Musical notation for drum set, measures 49-52. The top staff shows a snare drum pattern with eighth notes and a triplet of eighth notes. The bottom staff shows a bass drum pattern with quarter notes.

53

Musical notation for drum set, measures 53-56. The top staff shows a snare drum pattern with eighth notes. The bottom staff shows a bass drum pattern with quarter notes.

57

Musical notation for drum set, measures 57-60. The top staff shows a snare drum pattern with eighth notes and a triplet of eighth notes. The bottom staff shows a bass drum pattern with quarter notes.

61

Musical notation for drum set, measures 61-64. The top staff shows a snare drum pattern with eighth notes and a triplet of eighth notes. The bottom staff shows a bass drum pattern with quarter notes.

65

Musical notation for drum set, measures 65-68. The top staff shows a snare drum pattern with eighth notes and a triplet of eighth notes. The bottom staff shows a bass drum pattern with quarter notes.

69

Musical notation for drum set, measures 69-72. The top staff shows a snare drum pattern with eighth notes and a triplet of eighth notes. The bottom staff shows a bass drum pattern with quarter notes.

73

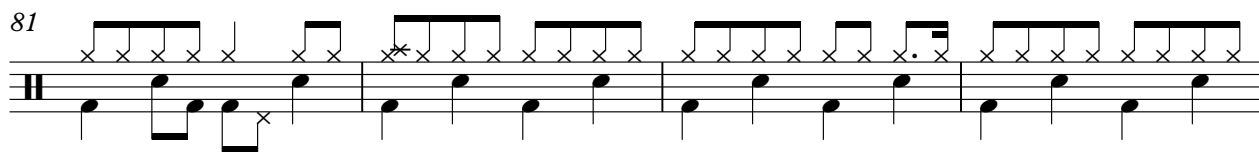
Musical notation for drum set, measures 73-76. The top staff shows a snare drum pattern with eighth notes and a triplet of eighth notes. The bottom staff shows a bass drum pattern with quarter notes.

77

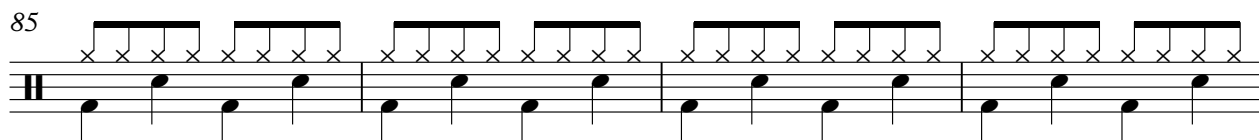
Musical notation for drum set, measures 77-80. The top staff shows a snare drum pattern with eighth notes. The bottom staff shows a bass drum pattern with quarter notes.

DRUMS

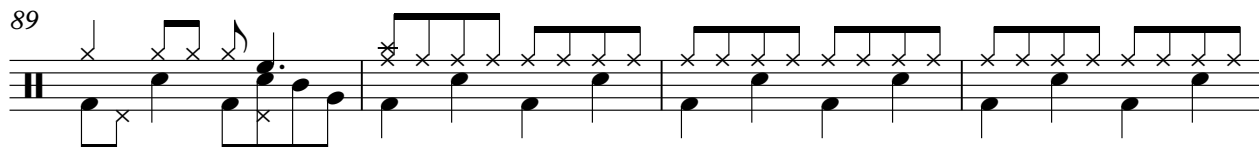
81



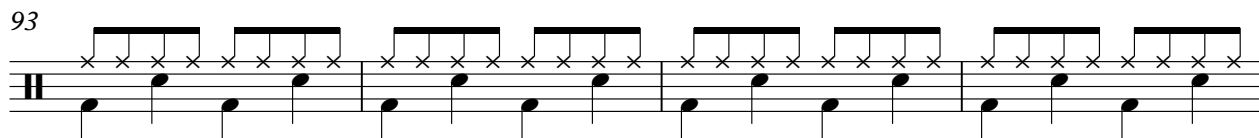
85



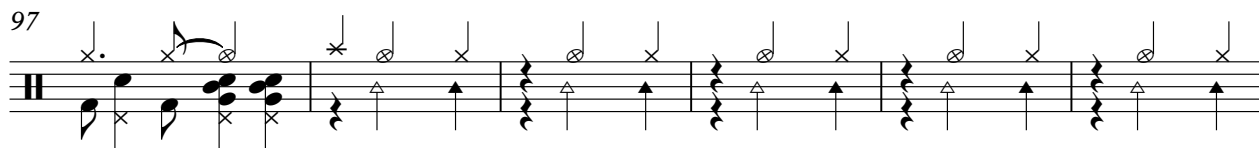
89



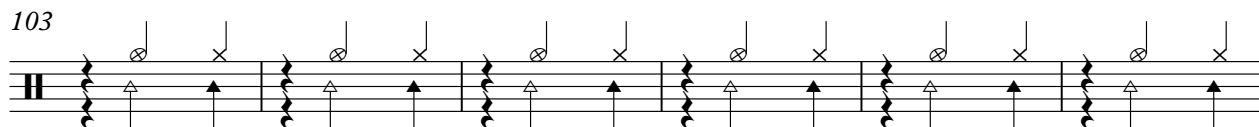
93



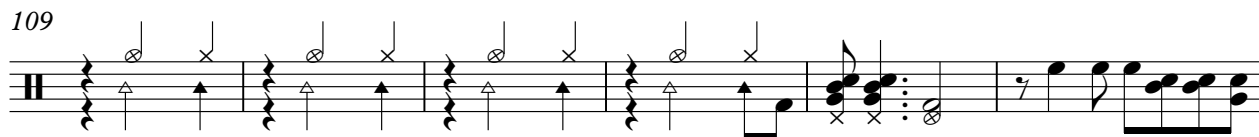
97



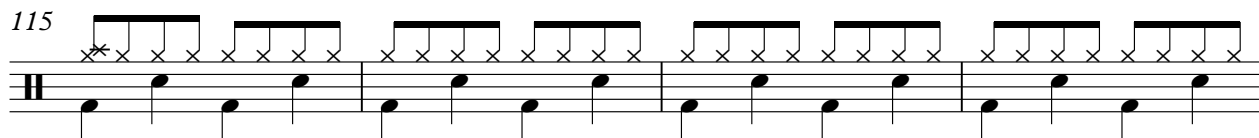
103



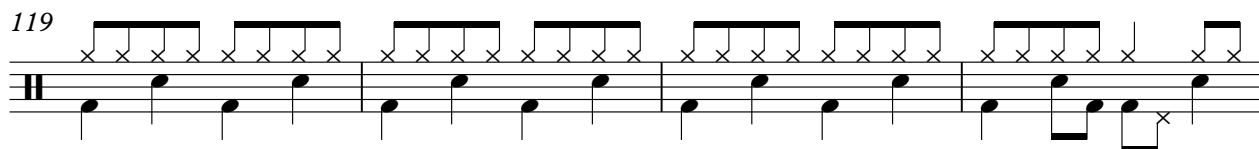
109



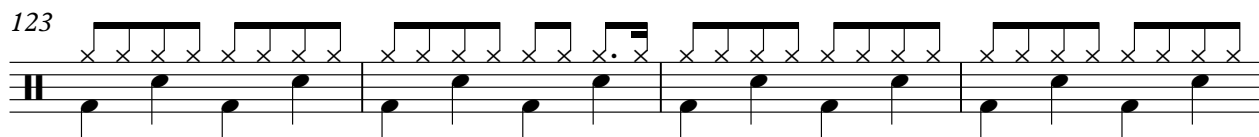
115



119



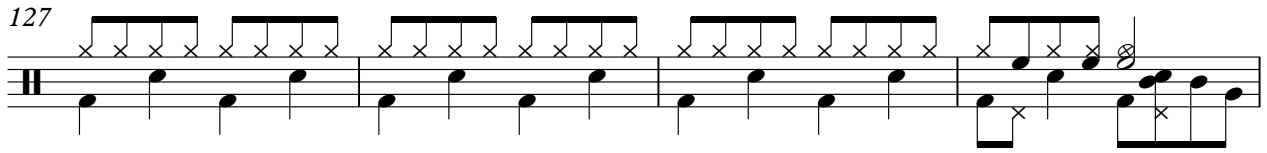
123



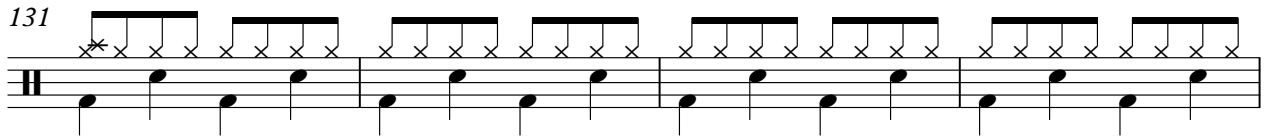
V.S.

DRUMS

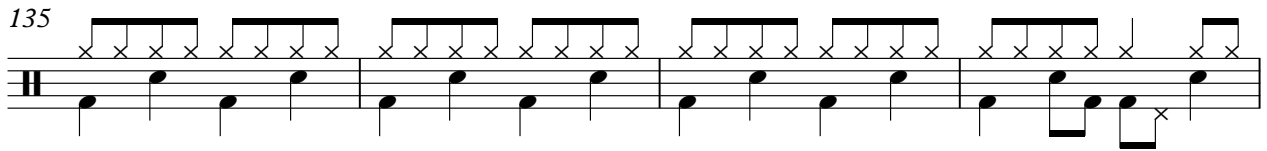
127



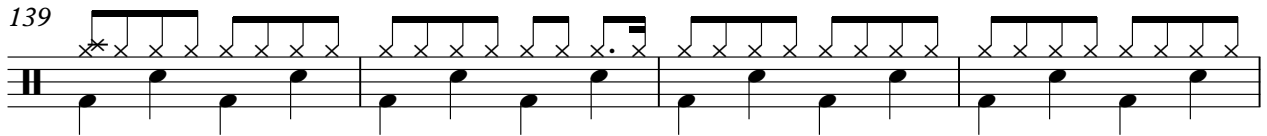
131



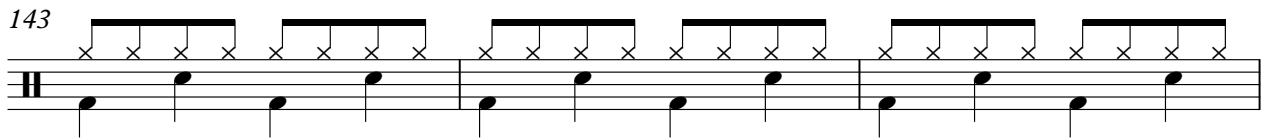
135



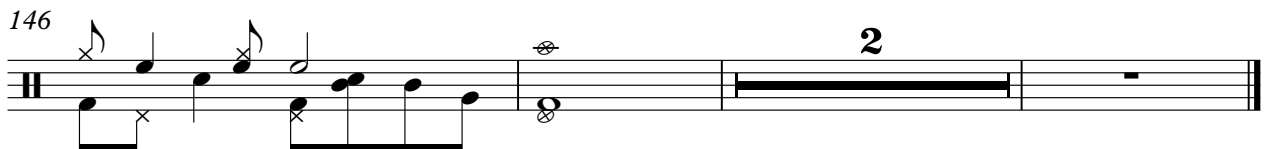
139



143



146



♩ = 170,000565

97

100

103

106

108

111

113

35

♩ = 170,000565

5

8

11

14

17

20

23

26

28

31



34



37



40



43



46



49



52



55



58



14



OVERDRIVE

Nena - Manchmal Ist Ein Tag Ein Ganzes Leben

♩ = 170,000565

6

7

17

7

28

32

36

40

42

7

7



54



56



58



60



62



64



66



68



70



73



V.S.

76



79



82



85



88



92



95



99



116



119



Nena - Manchmal Ist Ein Tag Ein Ganzes Leben

STRINGS

♩ = 170,000565

10 16

31

38 4

47 4

58

66

71

79

86 ∞

98



107



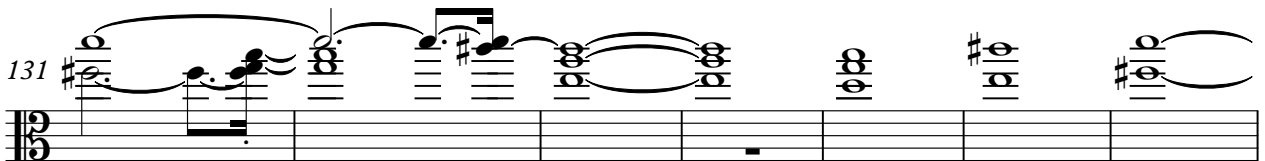
115



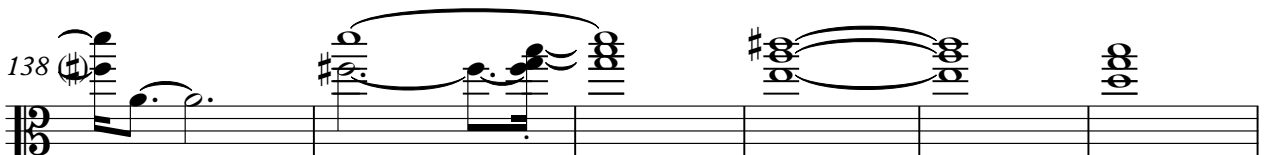
124



131



138



144



STRINGS

Nena - Manchmal Ist Ein Tag Ein Ganzes Leben

♩ = 170,000565

101

5

110

5

114

35